

VEHICLE DESCRIPTION - Audi Q5 S Line 2.0 50 TFSI e PHEV



First registration date
11/2023

VIN:
WAUZZZF8P2183562

Colour:
Black Metallic Normal gloss

Mileage (km):
45.667

Gear:
Automatic (7 Gears)

Fuel type:
Hybrid petrol

Body type:
SUV

Number of doors:
5

Drive type:
4WD

Model year:
2020-2025

Engine power:
220 kW

Number of seats:
5

Engine size (cc)
1984

Interior:
Black Partial leatherette

VEHICLE DETAILS

Number of keys:
2

Number of license plates:
2

Registration certificate:
Part 1 & 2 present

Service documentation:
No

Inspection date:
28-04-2026

Last service (year/month):

Mileage (km) at last service:

SUMMARY OF THE VEHICLE'S CONDITION

Is the car in a driveable condition:
Yes

Legal tire tread (minimum 1.6 mm):
Yes

WHEELS

 TYPE	SEASON	BRAND	POSITION	RIM	SIZE	TREAD
Fitted	Summer tires		Front Left	Alloy rim	19"	5 mm
Fitted	Summer tires		Front Right	Alloy rim	19"	5 mm
Fitted	Summer tires		Rear Left	Alloy rim	19"	5 mm
Fitted	Summer tires		Rear Right	Alloy rim	19"	5 mm
Extra Wheel	Winter tires		Front Left	Alloy rim	19"	6 mm
Extra Wheel	Winter tires		Front Right	Alloy rim	19"	6 mm
Extra Wheel	Winter tires		Rear Left	Alloy rim	19"	6 mm
Extra Wheel	Winter tires		Rear Right	Alloy rim	19"	6 mm

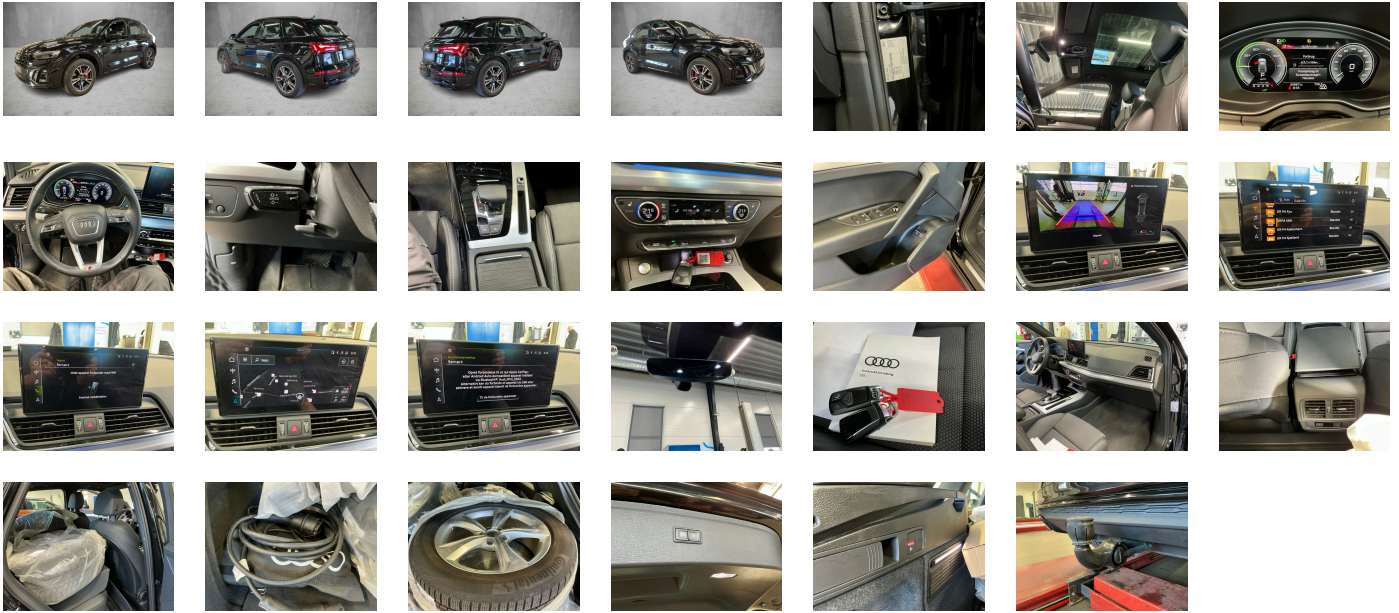
Legal tire tread (minimum 1.6 mm):

Yes

ACCESSORIES



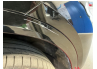



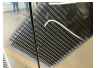

Trailer hitch aftermarket equipment- mechanically swiveling- manual, Standard-production quality, Driving on the right, No self-collection, Audi AG, Category 0, S line, Part set without country-specific prescriptive standard, Type approval country Denmark, Operating permit- alteration, Regional code " ECE " for radio, Charging socket AC type 2, No special edition, Control of series production, Without AdBlue tank, Basic equipment variant, Preparation for functions on demand, Production wheels, Country group A, No special purpose vehicle- standard equipment, Comfort stationary air conditioning, Without antenna amplifier, quattro with ultra technology, Acoustic vehicle alerting system, Vehicles with special upgrade measures, Accent surfaces- Gloss Black, Without Car2X, S tronic (for all-wheel drive), Tires 235/55 R19 101W, Audi connect navigation & infotainment, Smartphone interface, Audi connect emergency call & service with Audi connect remote & control, SI engine, Data module- Europe, Battery 380 A (68 Ah), Reversing camera, Refrigerant R1234yf, Without head-up display, Box, Left-hand drive, 4-cyl. SI engine 2.0 I/195 kW- hybrid- turbo FSI- system output 220 kW base engine is T4H, Without wall mount, Transit coating (type 2), Sequence cloth/leather combination, Assist package Tour, Brake calipers painted Red, Matrix LED headlights and LED rear lights and headlight cleaning system, Without Storage package, Service indicator 30 000 km or 2 years (variable), With multifunction camera, Clear glass, Ambient Lighting package plus, Camera-based traffic sign recognition, Without step, Digital Audio Broadcasting, Electromechanical power steering, Sport seats- front, Control of special edition prices, 4-cylinder SI engine 2.0 I unit 06N.E, Hold assist, Instrument cluster- km/h speedometer, Without garage door opener, Standard pedal cluster, Standard electric, Extended pedestrian protection, Door sill trims with aluminum inlays- front- illuminated- S logo, Without danger alarm system, Tires without specification of tire brand, Equipment package for Denmark, Comfort package II for Denmark, Business package for Denmark, Equipment package for Germany, Interior S line, Internal control code, Internal control code, Internal control code, Standard, Standard manufacturing sequence, tiptronic, Weight category front axle weight range 7, Hybrid propulsion system PHEV, With special labels safety certificates for Denmark, Fuel tank, Without ignition/starter switch locking system- without steering lock, Floor mats- front and rear, Manual in Danish, Weight range 11 installation control only- no requirement forecast, Standard climatic zones, Basic, Fuel system for SI engine with direct injection (FSI), Standard suspension, Special identification label (EU), Tire repair kit, Disk brakes- rear- 17-inch- brake calipers painted Red (ECE), Disk brakes- front- 17-inch- brake calipers painted Red (ECE), Wheel bolts- anti-theft, Standard suspension, Without additional front underbody guard, Vehicle tool kit (without vehicle jack), First-aid kit with warning triangle and high-visibility vests, Installation parts for four-cylinder engine, Leather steering wheel in 3-spoke design with multifunction plus and steering wheel heating, quattro, Increase in initial standard fuel filling, Axial and vertical adjustable steering column, Audi connect key, Insert for the filling up of unleaded fuel, Audi drive select, Labels in English and German, Reinforced bumpers, Loading sill protector- stainless steel, Without additional tires, Omission of model name and output/technology logo, Electric motor (hybrid electric vehicle)- total system output 220 kW- unit 0ED.D, ISOFIX child seat mounting and top tether for the outer rear seats, Partition net, Panoramic glass roof, Loading floor, Without child seat anchora in front (ISOFIX), Front seats- manually adjustable, Passenger car design, Rear seat bench plus, Black roof rails with roof rack detection system, Luggage compartment cover, Without roll-up sunshade, Seat heating- front, Emission standard EU6 AP, Without seat ventilation/massage seat, Luggage compartment lid- electrically opening and closing, Windshield with heat-reflecting glass and acoustic glass, Manual child safety lock, Convenience key- without Safelock, Rear and side windows with heat-insulating glazing, Interior mirror- automatically dimming- frameless, Beverage holders, Airbags- front, front passenger airbag can be deactivated, Side airbags- front and head airbag system, Black Styling package, Wheels- 5-spoke V- Graphite Gray- gloss turned finish- 8.0J x 19- 235/55 R19 tires, Without special body measures, Carrier frequency 433.92 MHz-434.42 Mhz, Roof spoiler, Adhesive film, Left exterior mirror- aspherical, Inlays- Matt Brushed Aluminum, Sun visors- front, Head restraints- front, Without fire extinguisher, Comfort center armrest- front, Exterior mirror housings in body color, Emblems, Audi active lane assist, Audi pre sense city, Headlining in cloth- Black, Luggage compartment mat, Right exterior mirror- aspherical, Rear trim panel (ECE), Without front license plate carrier, Exterior mirrors- electrically adjustable- heated and folding- automatically dimming on both sides, Electronic immobilizer, Without heat accumulator/auxiliary heater, Gearshift/selector lever handle, Without preparation for VTS (vehicle tracking system), Without leather, Vehicle class differentiation -FY0/FYF-, Tire pressure loss indicator, Recuperation, 4-way lumbar support for the front seats, MMI navigation plus with MMI touch, Without extended safety system, Parking system plus, Without lane change assist, e-tron charging system compact (AC) with domestic connector type K (Denmark), Industrial connector CEE 16A- 230V- long and straight- for the e-tron charging system, Charging cable for public charging- mode 3- 11 kW (AC), Without alternator, Matrix LED headlights with dynamic light sequencing and dynamic turn signal, Matrix LED headlights with dynamic light sequencing and dynamic turn signal, Separate daytime running light, Audi adaptive cruise control, LED rear lights with dynamic light sequencing and dynamic turn signal, Headlight cleaning system, Two-tone horn, Not hot country, 3-zone deluxe automatic air conditioning, Without integrated toll system, Non-smoker version, Without auxiliary heater/parking heater, Seat belt reminder, Audi virtual cockpit, Without additional warning lights, Audi sound system, Audi phone box light, Equipment options subset for Denmark

PICTURES



Picture viewer: <https://fm.bilsalg.dk/business/picturebrowser?t=full&guid=7b76af6b-6a61-45fc-be35-896eeb77189c&carid=26891686>

OVERVIEW OF DAMAGES AND SHORTAGES

N°	LOCATION	TYPE	SEVERITY	INSURANCE	NOTES	DAMAGE GROUP
1	Front Windscreen	Stone Chips	C5		Reporting needed	
						
2	R. Front Quarter Panel, List	Scratch	C3			
						
3	R. Rear Quarter Panel	Dent	C3			
						
4	R. Front Door	Dent	C3			
						

Severity explanation:

C0 = No damage / C1 = Simple preparation / C2 = Minor preparation needed / C3 = Can be smart repaired / C4 = Repair/spray paint / C5 = Need replacement

ELECTRICAL AND MECHANICAL CONDITION

N°	LOCATION	TYPE	NOTES
1	Is the car drivable	Yes	