

VEHICLE DESCRIPTION - Škoda Scala Monte Carlo 1.0 TSI



First registration date:
8/2025

VIN:
TMBER9NW6S3150693

Colour:
Gray Metallic Normal gloss

Mileage (km):
17.840

Gear:
Automatic (7 Gears)

Fuel type:
Gasoline

Body type:
Hatchback

Number of doors:
5

Drive type:
FWD

Model year:
2024

Engine power:
85 kW

Number of seats:
5

Engine size (cc):
999

Interior:
Dark grey Fabric

VEHICLE DETAILS

Number of keys:
2

Number of license plates:
2

Registration certificate:
Part 1 & 2 present

Service documentation:
Yes

Inspection date:
07-05-2026

Last service (year/month):
2025/8

Mileage (km) at last service:
9

SUMMARY OF THE VEHICLE'S CONDITION

Is the car in a driveable condition:
Yes

Legal tire tread (minimum 1.6 mm):
Yes

WHEELS

TYPE	SEASON	BRAND	POSITION	RIM	SIZE	TREAD
Fitted	Summer tires		Front Left	Alloy rim	17"	6 mm
Fitted	Summer tires		Rear Right	Alloy rim	17"	6 mm
Fitted	Summer tires		Rear Left	Alloy rim	17"	6 mm
Fitted	Summer tires		Front Right	Alloy rim	17"	6 mm

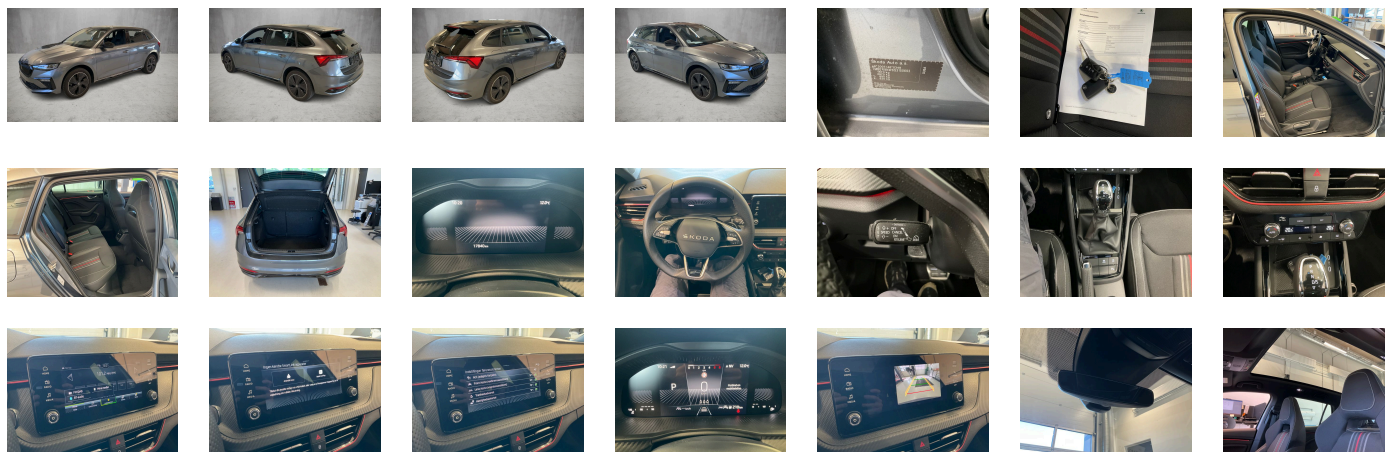
Legal tire tread (minimum 1.6 mm):

Yes

ACCESSORIES

Disc brakes in front (Geomet D), Initial standard fuel filling, Without delivery equipment, Additional exterior noise suppression, Axial and vertical adjustable steering column, Drive Mode Select without Chassis Presets, Body-colored bumpers, Fresh air intake system with combinationfilter, Fuel filler cap, Child seat anchors f. child seat system i-Size- 2x top tether and child seat anchors in front on front passenger side, Without partition, 3-point seat belt for center rear seat, Center console, Panoramic sunroof, Without luggage/load compartment floor, Without backrest release for front seats, Head restraints for front seats, Unsplit rear seat bench- split folding backrest- with center armrest, Manual height adjustment for front seats, Mounting fixture in luggage compartment, 3-point seat belts in front- with tensioner and height adjustment, Three rear head restraints, Long rear window with spoiler, Without roof rails/roof load rack, Net under the luggage compartment cover, Without additional noise suppression measures for passenger compartment, 3-point seat belts- outer rear with ECE label, door panels with leatherette, Seat heater for front seats separately controlled, Without protective side molding, Tailgate without electrical opening, Heat-reflecting windshield, Central locking system Keyless Entry without SAFELock, Sunset, Breakaway interior rearview mirror- auto-dimming, Rear floor panel module- type 3, Power windows with comfort operation andcircuit breaker, Driver knee airbag, Emission standard- WLTP3 M1- N1-I//EU6EB, Side airbag in front and rear with curtain airbag, Without waste bin, Standard decorative trims, Glove compartment door with light, Alloy wheels 6.5J x 17" "KAJAM Aero" black, Carrier frequency 433.92 MHz-434.42 Mhz, Transport protection film with additional transport protection measures, Right exterior mirror- convex, Left exterior mirror- convex, Sun visors with mirror and airbag label on front passenger side, Without fire extinguisher, Additional body cover on sill without wheel arch, Center armrest in front "Jumbo Box", Outside door mirrors in black color, Without decorative films/emblems, Lane assist +, Radiator grille - black, "FRONT ASSIST" incl. adaptive cruise control, Interiorbars and air vents frame Red, Luggage net, Black ceiling, Gearshift knob/handle in leather, Without two-sided floor surface, exterior mirrors- dimmable on driver side- power folding- adjustable- heated, Electronic immobilizer, 12-volt socket in luggage boot, Without heat accumulator/auxiliary heater, Freely programmable instrument cluster Basic, Tire pressure monitoring system, Vehicle class differentiation -655-, Start-stop system with regenerative braking, Scuff plates in door apertures, Without overhead storage compartment, Manually adjustable lumbar support in front seats, Without navigation device, Decorative inserts, Crew Protect Assist, Rear and front parking sensors, Without lane change assist, Without second battery, Alternator 140 A, Matrix beam, Full LED Headlights, Separate daytime running light with automatic headlight control and manual Coming and Leaving Home feature, Rear window wiper and washer system with intermittent control, Windshield wiper intermittent control with light/rain sensor, Key for locking system with remote control, Dynamic headlight range control (self-adjusting while driving), 8 speakers (passive), Adaptive cruise control (for DSG) with Speedlimiter, LED rear combination lamp- dynamic turn signal- special styling, Front fog lamp and cornering lamp, Washer fluid level indicator, Without headlamp washer system, Single-tone horn, Antenna for FM reception only- diversity, Not hot country, Climatronic with impact pressure control- CFC-free, Without additional malfunction display, Non-smoker's package, Without auxiliary heater/parking heater, Visual and acoustic seat belt reminder- electric contact, Without heated washer nozzles, Wired & Wireless Smart Link+, Bluetooth, Equipment options subset for Denmark, Driving on the right, "Standard Plus" version, Monte Carlo, Part set without country-specific prescriptive standard, Type approval country Denmark, Operating permit- alteration, 3-cylinder SI engine 1.0 l/85 kW TSI base engine is Tj4/T0R/T26/T0M/T1D, ECO function, Remote Access / Pro-active service, Advanced driver attention & drowsiness monitor, Regional code " ECE " for radio, Special edition, Standard paint coating, Basic equipment variant, No special purpose vehicle- standard equipment, Shock absorption in front, 7-speed automatic transmission, Without bracket, Curb weight range 1, Rear axle weight- type 1, Entry-level infotainment system radio upgrade (UNECE), Battery 320 A (49 Ah), Tires 205/50 R17 89V, With rear view camera system (type 2), Refrigerant R1234yf, With trim panel, Spaceback, Left-hand drive, Suspension range 06 installation control only- no requirement forecast, Without adapter, With UNECE CS (R155) without SU (R156), With umbrella, Emergency call system eCall+, Seat trim covers in fabric, Without storage compartment package/box, LongLife Service Regime, Without voice control, Service indicator 30 000 km or 2 years (variable), With multifunction camera, Without drawers under front seats, Interior ambient lighting- type 1, With dynamic road sign display, DAB - Digital radio reception, Sport Seats, 3-cylinder SI engine 1.0 l unit 05C.B, Hill hold control, Instrument cluster- km/h speedometer, External- USB type C data socket(s) and charging socket(s) with increased charging capacity, Aluminium pedals, Extended and proactive pedestrian and cyclist protection, Tires without specification of tire brand, Care connect 3 years, Front stabilizer bar, 4 doors, Wheelbase, Installation differentiation for transmission DQ200 -- vehicle components --, Standard manufacturing sequence, Without alternative drive system, Standard rear axle, Nameplate set, Without electronic steering column lock, Floor mats in front and rear, Manual in Danish, Weight range 14 installation control only- no requirement forecast, Standard climatic zones, Rear overhang- medium, Electronic stability control (ESC), Fuel system for fuel-injected SI engine (tropicalized), Antifreeze up to -25 degree Celsius tolerance up to -30 degree C, Without trailer hitch, Special identification label for EC for M1 passenger vehicles, Activated carbon canister (Evaporative Emission Control System (EVAP)), Breakdown kit, Rear shock absorption- basic version 1, Drum brakes in rear, Hub cap, Power steering, Standard wheel bolts, Additional front underbody guard, Tool kit, Without folding table on front seat backrest, Without refrigerator/glove compartment cooling system, Leather multi-function steering wheel with tiptronic- heated, Front-wheel drive

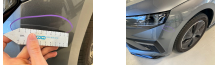
PICTURES



Picture viewer: <https://fm.bilsalg.dk/business/picturebrowser?t=full&guid=502a2140-adb7-45f3-b615-853baa2ca451&carid=25347482>

OVERVIEW OF DAMAGES AND SHORTAGES

N°	LOCATION	TYPE	SEVERITY	INSURANCE	NOTES	DAMAGE GROUP
1	Front Bumper	Scratch	C4		Reporting needed	



Severity explanation:

C0 = No damage / C1 = Simple preparation / C2 = Minor preparation needed / C3 = Can be smart repaired / C4 = Repair/spray paint / C5 = Need replacement

ELECTRICAL AND MECHANICAL CONDITION

N°	LOCATION	TYPE	NOTES
1	Is the car drivable	Yes	