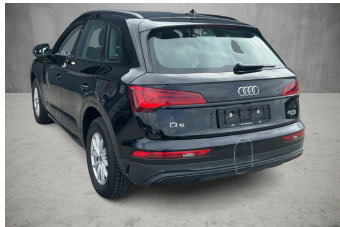


VEHICLE DESCRIPTION - Audi Q5 Prestige Midnight Edition 2.0 40 TDI MHEV



First registration date: 5/2023	VIN: WAUZZZF9P2091358
Colour: Black Metallic Normal gloss	Mileage (km): 42.175
Gear: Automatic (7 Gears)	Fuel type: Hybrid diesel
Body type: SUV	Number of doors: 5
Drive type: 4WD	Model year: 2020-2025
Engine power: 150 kW	Number of seats: 5
Engine size (cc): 1968	Interior: Black Fabric

VEHICLE DETAILS

Number of keys: 2	Number of license plates: 2	Registration certificate: Part 1 present	Service documentation: Yes
Inspection date: 22-05-2026	Last service (year/month): 2025/4	Mileage (km) at last service: 27.326	

SUMMARY OF THE VEHICLE'S CONDITION

Is the car in a driveable condition: Yes	Legal tire tread (minimum 1.6 mm): Yes
--	--

WHEELS

TYPE	SEASON	BRAND	POSITION	RIM	SIZE	TREAD
Fitted	Winter tires		Rear Left	Alloy rim	17"	6 mm
Fitted	Winter tires		Front Right	Alloy rim	17"	5 mm
Fitted	Winter tires		Front Left	Alloy rim	17"	5 mm
Fitted	Winter tires		Rear Right	Alloy rim	17"	6 mm
Extra Wheel	Summer tires		Rear Left	Alloy rim	18"	5 mm
Extra Wheel	Summer tires		Front Right	Alloy rim	18"	5 mm
Extra Wheel	Summer tires		Front Left	Alloy rim	18"	5 mm
Extra Wheel	Summer tires		Rear Right	Alloy rim	18"	5 mm

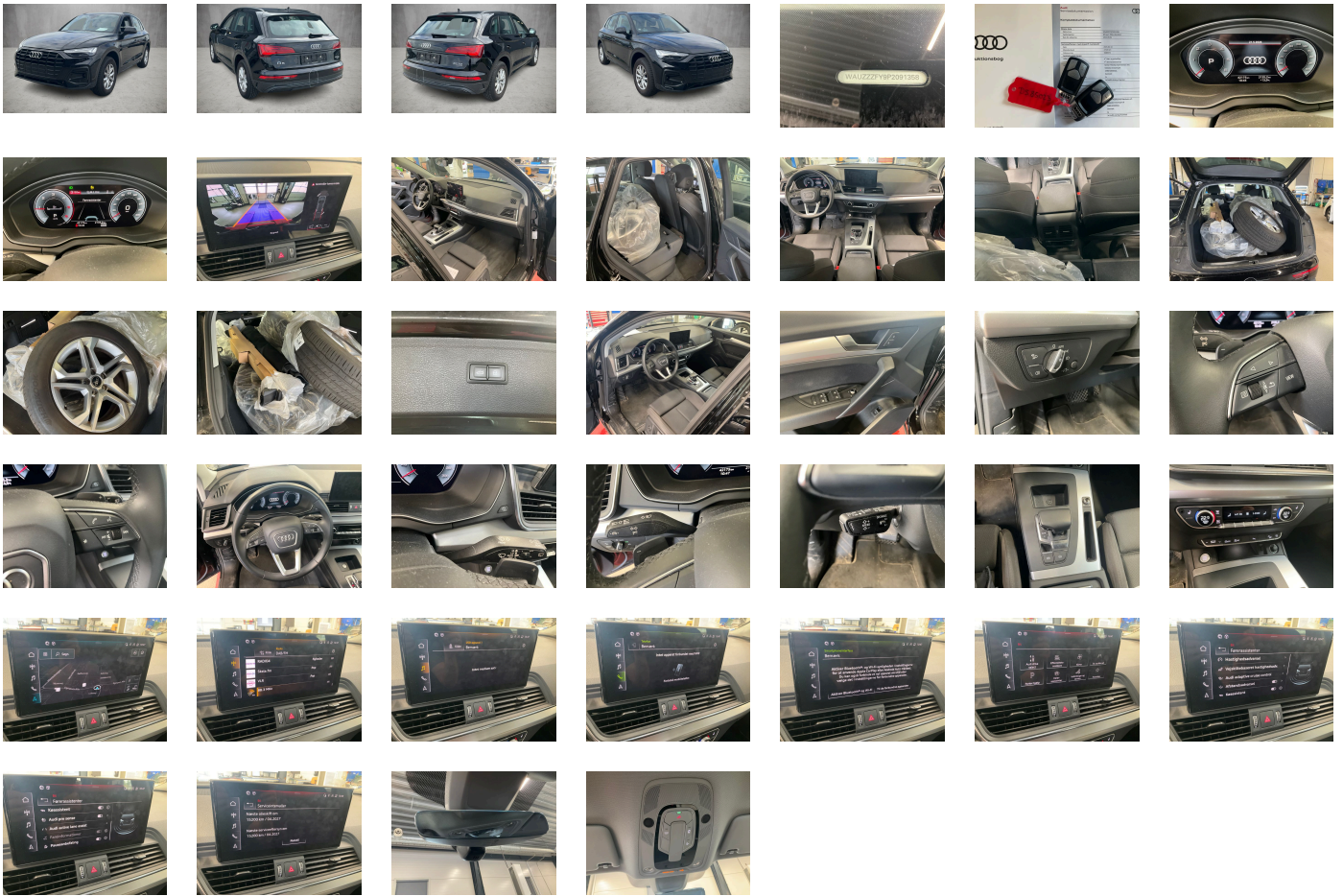
Legal tire tread (minimum 1.6 mm):

Yes

ACCESSORIES




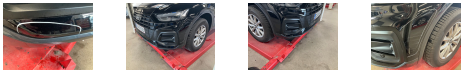


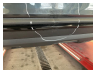

Standard-production quality, Driving on the right, No self-collection, Audi AG, Category 0, advanced, Part set without country-specific prescriptive standard, Type approval country Denmark, Operating permit- alteration, 4-cyl. turbo diesel engine 2.0 l/150 kW (4V) TDI- common rail base engine is T6F/T98/T48/T4T/T1T/T1H, Regional code " ECE " for radio, Without vehicle inlet, Without e-tron charging system compact (AC)- without mains cable for domestic connector, No special edition, Control of series production, AdBlue tank with increased capacity, Basic equipment variant, Preparation for functions on demand, Production wheels, Country group A, No special purpose vehicle- standard equipment, Without preconditioning, Without antenna amplifier, quattro with ultra technology, Without acoustic vehicle alerting system, Vehicles with special upgrade measures, Accent surfaces- Matt Black, Without Car2X, S tronic (for all-wheel drive), Tires 235/60 R18 103W, Audi connect navigation & infotainment, Smartphone interface, Audi connect emergency call & service with Audi connect remote & control, Diesel engine, Data module-Europe, Battery 380 A (68 Ah), Reversing camera, Refrigerant R1234yf, Without head-up display, Box, Left-hand drive, Without wall mount, Transit coating (type 2), Impressum cloth, Assist package Tour, Matrix LED headlights and LED rear lights and headlight cleaning system, Without Storage package, Service indicator 30 000 km or 2 years (variable), With multifunction camera, Clear glass, Ambient Lighting package plus, Camera-based traffic sign recognition, Without step, Digital Audio Broadcasting, Electromechanical power steering, Sport seats- front, 4-cylinder diesel engine 2.0 l unit 05L.A, Hold assist, Instrument cluster- km/h speedometer, Without garage door opener, Standard pedal cluster, Standard electric, Extended pedestrian protection, Without danger alarm system, Tires without specification of tire brand, Equipment package for Denmark, Comfort package II for Denmark, Business package for Denmark, Internal control code, Internal control code, Standard, Standard manufacturing sequence, Fuel system for diesel engine, tiptronic, Weight category front axle weight range 6, Mild hybrid, With special labels safety certificates for Denmark, Fuel tank with increased capacity, Without ignition/starter switch locking system- without steering lock, Floor mats- front and rear, Manual in Danish, Weight range 7 installation control only- no requirement forecast, Standard climatic zones, Basic, Standard suspension, Preparation for trailer hitch, Special identification label (EU), Tire repair kit, Disc brakes in rear- 17-inch (ECE), Disk brakes- front- 17-inch (ECE), Wheel bolts- anti-theft, Standard suspension, Without additional front underbody guard, Vehicle tool kit (without vehicle jack), First-aid kit with warning triangle and high-visibility vests, Installation parts for four-cylinder engine, Leather steering wheel- 3-spoke with multifunction plus, quattro, Increase in initial standard fuel filling, Axial and vertical adjustable steering column, Audi connect key, Filler neck module 1 without insert, Audi drive select, Labels in English and German, Reinforced bumpers, Loading sill protector- stainless steel, Without additional tires, Model name as per new output designation, Without electric motor (hybrid), ISOFIX child seat mounting and top tether for the outer rear seats, Partition net, Without roof insert (standard roof), Loading floor, Without child seat anchora in front (ISOFIX), Front seats- manually adjustable, Passenger car design, Split-folding rear seat backrest, Black roof rails with roof rack detection system, Luggage compartment cover, Without roll-up sunshade, Seat heating- front, Emission standard EU6 AP, Without seat ventilation/massage seat, Luggage compartment lid- electrically opening and closing, Windshield with heat-reflecting glass and acoustic glass, Manual child safety lock, Convenience key- without Safelock, Rear and side windows with heat-insulating glazing, Interior mirror- automatically dimming- frameless, Beverage holders, Airbags- front, front passenger airbag can be deactivated, Side airbags- front and head airbag system, Black Styling package, Wheels- 5-twin-spoke dynamic- 8.0J x 18 235/60 R18 tires, Without special body measures, Carrier frequency 433.92 MHz-434.42 Mhz, Rear spoiler, Adhesive film, Inlays- Micrometallic- Silver, Left exterior mirror- aspherical, Sun visors- front, Head restraints- front, Without fire extinguisher, Comfort center armrest- front, Exterior mirror housings in body color, Without decorative films/emblems, Audi active lane assist, Audi pre sense city, Headlining in cloth in specific color, Luggage compartment mat, Right exterior mirror- aspherical, Rear trim panel (ECE), Without front license plate carrier, Exterior mirrors- electrically adjustable- heated and folding- automatically dimming on both sides, Electronic immobilizer, Electric auxiliary air heater, Gearshift/selector lever handle, Without preparation for VTS (vehicle tracking system), Without leather, Vehicle class differentiation -FY0/FYF-, Tire pressure loss indicator, Start-stop system, Door sill trims with aluminum inlays- front, 4-way lumbar support for the front seats, MMI navigation plus with MMI touch, Without extended safety system, Parking system plus, Without lane change assist, Without mains cable for industrial connector for the e-tron charging system, Without charging cable for public charging (AC)- mode 3, Matrix LED headlights with dynamic light sequencing and dynamic turn signal, Matrix LED headlights with dynamic light sequencing and dynamic turn signal, Separate daytime running light, Audi adaptive cruise control, LED rear lights with dynamic light sequencing and dynamic turn signal, Headlight cleaning system, Two-tone horn, Not hot country, 3-zone deluxe automatic air conditioning, Without integrated toll system, Belt-driven integrated starter alternator 12 V- 130 - 200 A, Non-smoker version, Without auxiliary heater/parking heater, Seat belt reminder, Audi virtual cockpit plus, Without additional warning lights, Audi sound system, Audi phone box light, Equipment options subset for Denmark

PICTURES



Picture viewer: <https://fm.bilsalg.dk/business/picturebrowser?t=full&guid=d7c2c844-ac34-4ca8-816a-c0ce855158f2&carid=24946415>

OVERVIEW OF DAMAGES AND SHORTAGES

N°	LOCATION	TYPE	SEVERITY	INSURANCE	NOTES	DAMAGE GROUP
1	L. Front door	Dent	C4	Reporting needed		
						
2	L. Rear Door	Scratch	C4	Reporting needed		Group 1
						
3	L. Rear Door, Handle	Scratch	C4	Reporting needed		Group 1
						
4	Front Bumper	Scratch	C4	Reporting needed		
						
5	L. Rear Quarter Panel, List	Scratch	C4	Reporting needed		Group 1
						
6	Rear Bumper	Dent	C4	Reporting needed		Group 2
						
7	Rear Bumper, Spoiler	Dent	C4	Reporting needed		Group 2
						
8	L. Rear Quarter Panel	Scratch	C4	Reporting needed		Group 1
						

Severity explanation:

C0 = No damage / C1 = Simple preparation / C2 = Minor preparation needed / C3 = Can be smart repaired / C4 = Repair/spray paint / C5 = Need replacement

ELECTRICAL AND MECHANICAL CONDITION

N°	LOCATION	TYPE	NOTES
1	Is the car drivable	Yes	