

**VEHICLE DESCRIPTION - Škoda Karoq Selection 1.5 TSI**



**First registration date:**  
6/2025

**VIN:**  
TMBJR7NU2S5046174

**Colour:**  
Silver Metallic Normal gloss

**Mileage (km):**  
21.694

**Gear:**  
Automatic (7 Gears)

**Fuel type:**  
Gasoline

**Body type:**  
SUV

**Number of doors:**  
5

**Drive type:**  
FWD

**Model year:**  
2022

**Engine power:**  
110 kW

**Number of seats:**  
5

**Engine size (cc):**  
1498

**Interior:**  
Black Fabric

**VEHICLE DETAILS**

**Number of keys:**  
2

**Number of license plates:**  
2

**Registration certificate:**  
Part 1 present

**Service documentation:**  
No

**Inspection date:**  
09-06-2026

**Last service (year/month):**

**Mileage (km) at last service:**

**SUMMARY OF THE VEHICLE'S CONDITION**

**Is the car in a driveable condition:**  
Yes

**Legal tire tread (minimum 1.6 mm):**  
Yes

**WHEELS**

 TYPE	SEASON	BRAND	POSITION	RIM	SIZE	TREAD
Fitted	Summer tires		Front Left	Alloy rim	18"	5 mm
Fitted	Summer tires		Rear Right	Alloy rim	18"	5 mm
Fitted	Summer tires		Rear Left	Alloy rim	18"	5 mm
Fitted	Summer tires		Front Right	Alloy rim	18"	5 mm

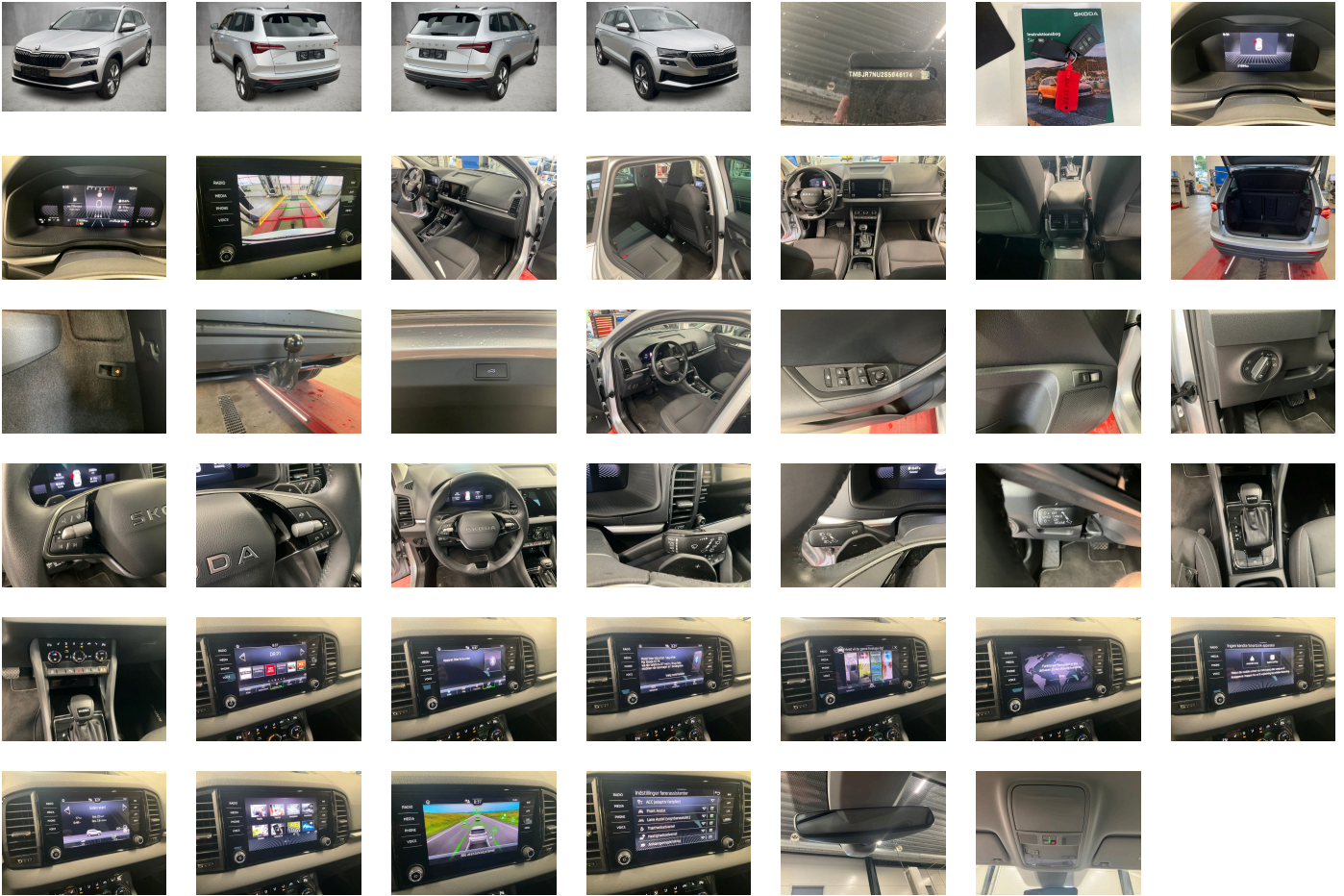
**Legal tire tread (minimum 1.6 mm):**

Yes

**ACCESSORIES**

Vehicle class differentiation -5EP-, Fuel system for fuel-injected SI engine, Standard electronic engine sound, Curtain airbags and side airbags front, Radiator grille, Rear exhaust tailpipe (standard), Without add. lights (interior lighting), Heat-reflecting windshield, Without bracket, Glasses storage compartment, Rear spoiler, Manual child safety lock, Front head restraints, Climatronic with impact pressure control- CFC-free, Electronic stability control (ESC), Without additional noise suppression measures for passenger compartment, Without roof insert (standard roof), Tool kit, Headlight range control, Traffic sign recognition, Without tie down straps/net/pocket, Alloy wheels "PROCYON" 7J x 18" - 4 pcs, Extended and proactive pedestrian protection, Without child seat anchora in front (ISOFIX), "KESSY FULL" without SAFE system, Transport protection film with additional transport protection measures, External- USB type C- only data socket(s), Without additional front underbody guard, Standard seats in front, 4 doors, Basic equipment variant, Without load-through hatch, Without luggage/load compartment floor, Key for locking system with remote control, Front stabilizer bar, Without heated washer nozzles, Disc brakes in rear, Without mud flap, Without backrest release for front seats, Driver and passenger seat with lumbar support, Bright decorative trims, Mechanical rear seat release, Wheelbase, Additional retro-reflectors (door area), Infotainment Bolero/Amundsen/Columbus (MIB3), Without rear stabilizer bar, Remote Access / Remote Access + Online Infotainment, Fuel filler cap, Additional 4 loudspeakers rear, Without folding table on front seat backrest, Brake pad wear indicator, Reading light in front, 2 spoke multi-function leather steering wheel with heating and with DSG paddles, Activated carbon canister (Evaporative Emission Control System (EVAP)), Shock absorption in front, Advanced driver attention & drowsiness monitor, "SUNSET", Electronic immobilizer, Without "drive select", Folding grab handles- multi-piece, Adaptive cruise control (with "follow-to-stop") and speed limiter, Driving on the right, Without floor mats, Inside rear view mirror automatically dimming, Storage compartment package 3, MPV, Special identification label for EC for M1 passenger vehicles, Rear fog lamp, 12-volt socket in luggage boot, 3-point seat belts- outer rear with ECE label, DAB - Digital radio reception, Gearshift knob/handle in leather, 7-speed automatic transmission, Breakdown kit, Front-wheel drive, "SMART LINK" (wired and wireless), Refrigerant R1234yf, Installation differentiation for transmission DQ200 -- vehicle components --, Curb weight range 1, 4-cylinder SI engine 1.5 l unit 05E.D, No special purpose vehicle-standard equipment, High adjustable driver and passenger seat, LongLife Service Regime, Decorative inserts, Manual in Danish, Tires without specification of tire brand, Standard bumpers, Standard manufacturing sequence, Door and side trim panel, Without additional malfunction display, Washer fluid level indicator, LED rear combination lamp- variable lighting functions- special styling, Standard paint coating, Voice control, Without light control, Without heat accumulator/auxiliary heater, Front fog lights, Initial standard fuel filling, Luggage compartment floor covering in flat needle-punched nonwoven, Radio Bolero, Comfort equipment, Operating voltage 12 V, Headlamp washer system, Without interior light in footwell, Without storage compartments in trunk, No special edition, Rear floor panel module- type 7, Without supertone system and tone sequence control, Service indicator 30 000 km or 2 years ( variable ), Disc brakes in front, Regional code " ECE " for radio, Alternator 140 A, Standard climatic zones, Without extended safety system, Non-smoker's package, Two-tone horn, Right exterior mirror- convex, Mobile phone interface, Chrome package, Unsplit rear seat bench- split folding backrest- with center armrest, Adapter, Weight range 7 installation control only- no requirement forecast, Without special body measures, Without vehicle inlet, Front armrest "JUMBO BOX", Heated front seats, Parking pack, Left exterior mirror-convex, Park distance control system (parking sensors front and rear), Not hot country, Standard air cleaner, With multifunction camera, Power windows with comfort operation and circuit breaker, Wheel arches, Design Selection LOFT Upholstery in fabric, Without decorative films/emblems, Carrier frequency 433.92 MHz-434.42 Mhz, LED headlamps, Rear shock absorption- chassis with increased ride height, Left-hand drive, Suspension range 10 installation control only- no requirement forecast, Without lane change assist, Antenna for FM reception only- diversity, Tires 215/50 R18 92W, Without alternative drive system, Exterior mirror housings and various add-on parts in body color, Trailer hitch mechanically swiveling and power-detachable, Without auxiliary heater/parking heater, Separate daytime running light with automatic headlight control and manual Coming and Leaving Home feature, Standard pedal cluster, 4-cylinder SI engine 1.5 l/110 kW TSI base engine is TJ7/N09/T9F/T57/T0D, 3-point seat belts in front- with tensioner and height adjustment, Speed-related variable steering assist (Servotronic), Tow bar swiveling- el. unlockable and with adaptor, With rear view camera system (type 2), Freely programmable instrument cluster Basic, Child seat anchors for child seat system ISOFIX, Exterior mirrors- auto-dimming- power-folding/adjustable/heated, Rear axle weight- type 1, Without ECO function, Bright roof rails, Aero hubcaps black, Rear window wiper and washer system with intermittent control, Tyre pressure monitoring, Lane Assist (without HOD), Instrument cluster- km/h speedometer, Without delivery equipment, Without electric motor (hybrid), Standard battery/alternator capacity, Virtual pedal, Type approval country Denmark, Without emblem package, Driver knee airbag, 3rd rear headrest, Without partition, Standard rear axle, Part set without country-specific prescriptive standard, With UNECE CS (R155) without SU (R156), Hill start assist, Sun visors with illuminated vanity mirror on driver and front passenger side, Windshield wiper intermittent control with light/rain sensor, Start-stop system with regenerative braking, Additional exterior noise suppression, Passenger seat-belt warning light (for all passengers), Nameplate set in basic style, Operating permit- alteration, Standard wheel bolts, Emergency call system eCall+, Emission standard- WLTP3 M1- N1-I//EU6EB, Battery 420 A (70 Ah), Remote Access 3 years, Door sills (front), Parking brake, Forward collision warning incl. autonomous emergency braking- for adaptive cruise control "high", Equipment options subset for Denmark

**PICTURES**



**Picture viewer:** <https://fm.bilsalg.dk/business/picturebrowser?t=full&guid=cf4f45df-ba01-4421-8293-e3f0c1d038c3&carid=24936081>

## OVERVIEW OF DAMAGES AND SHORTAGES

No damages or shortages

## ELECTRICAL AND MECHANICAL CONDITION

N°	LOCATION	TYPE	NOTES
1	Is the car drivable	Yes	