

VEHICLE DESCRIPTION - Škoda Karoq Selection 1.5 TSI



First registration date:
6/2025

VIN:
TMBJR7NU5S5058707

Colour:
Gray Metallic Normal gloss

Mileage (km):
16.909

Gear:
Automatic (7 Gears)

Fuel type:
Gasoline

Body type:
SUV

Number of doors:
5

Drive type:
FWD

Model year:
2022

Engine power:
110 kW

Number of seats:
5

Engine size (cc):
1498

Interior:
Dark grey Fabric

VEHICLE DETAILS

Number of keys:
2

Number of license plates:
2

Registration certificate:
Part 1 & 2 present

Service documentation:
No

Inspection date:
12-06-2026

Last service (year/month):

Mileage (km) at last service:

SUMMARY OF THE VEHICLE'S CONDITION

Is the car in a driveable condition:
Yes

Legal tire tread (minimum 1.6 mm):
Yes

WHEELS

TYPE	SEASON	BRAND	POSITION	RIM	SIZE	TREAD
Fitted	Summer tires		Front Left	Alloy rim	18"	6 mm
Fitted	Summer tires		Rear Right	Alloy rim	18"	6 mm
Fitted	Summer tires		Rear Left	Alloy rim	18"	6 mm
Fitted	Summer tires		Front Right	Alloy rim	18"	6 mm

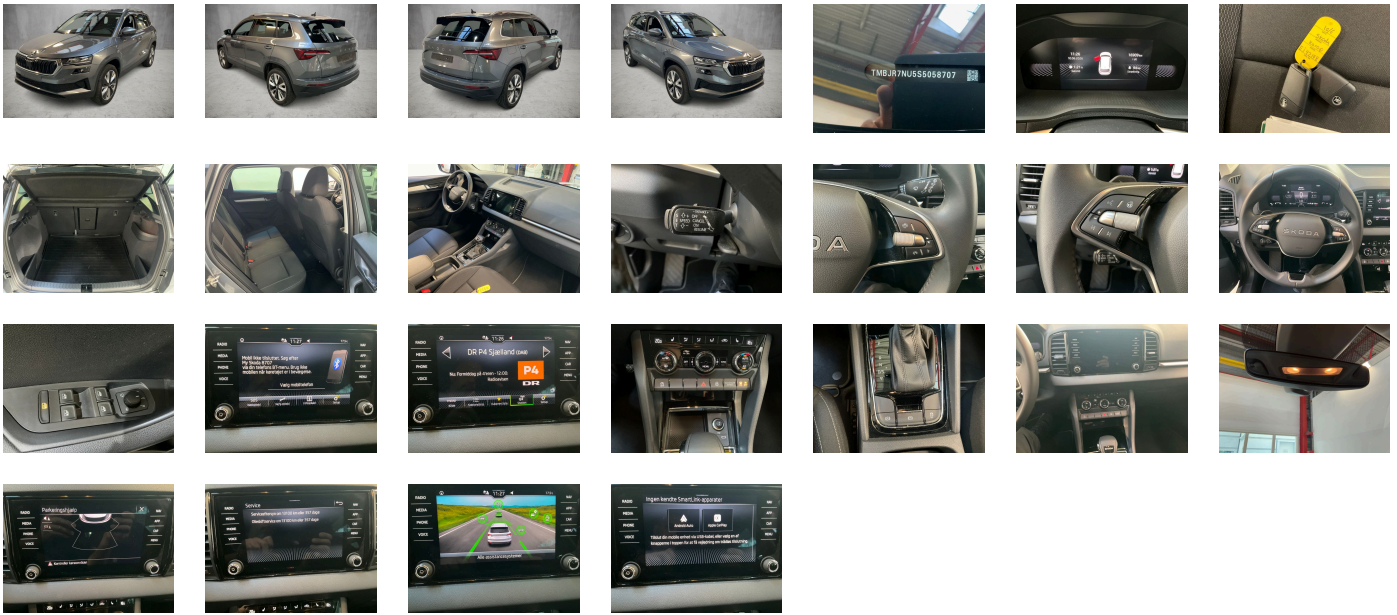
Legal tire tread (minimum 1.6 mm):

Yes

ACCESSORIES

Without light control, Without heat accumulator/auxiliary heater, Front fog lights, Vehicle class differentiation -5EP-, Fuel system for fuel-injected SI engine, Initial standard fuel filling, Luggage compartment floor covering in flat needle-punched nonwoven, Standard electronic engine sound, Radio Bolero, Comfort equipment, Operating voltage 12 V, Curtain airbags and side airbags front, Rear exhaust tailpipe (standard), Radiator grille, Without add. lights (interior lighting), Headlamp washer system, Without interior light in footwell, Heat-reflecting windshield, Without storage compartments in trunk, No special edition, Without bracket, Rear floor panel module- type 7, Glasses storage compartment, Rear spoiler, Service indicator 30 000 km or 2 years (variable), Without supertone system and tone sequence control, Manual child safety lock, Front head restraints, Disc brakes in front, Climatronic with impact pressure control- CFC-free, Electronic stability control (ESC), Regional code " ECE " for radio, Alternator 140 A, Standard climatic zones, Without additional noise suppression measures for passenger compartment, Without roof insert (standard roof), Two-tone horn, Without extended safety system, Non-smoker's package, Tool kit, Right exterior mirror- convex, Mobile phone interface, Headlight range control, Without tie down straps/net/pocket, Chrome package, Traffic sign recognition, Unsplit rear seat bench- split folding backrest- with center armrest, Alloy wheels "PROCYON" 7J x 18" - 4 pcs, Without adapter, Extended and proactive pedestrian protection, Without child seat anchora in front (ISOFIX), Weight range 6 installation control only- no requirement forecast, "KESSY FULL" without SAFE system, Transport protection film with additional transport protection measures, External- USB type C- only data socket(s), Without additional front underbody guard, Standard seats in front, 4 doors, Without special body measures, Without vehicle inlet, Front armrest "JUMBO BOX", Heated front seats, Basic equipment variant, Without load-through hatch, Left exterior mirror- convex, Without luggage/load compartment floor, Park distance control system (parking sensors rear), Key for locking system with remote control, Not hot country, Front stabilizer bar, Standard air cleaner, Without heated washer nozzles, With multifunction camera, Wheel arches, Power windows with comfort operation and circuit breaker, Disc brakes in rear, Without mud flap, Without backrest release for front seats, Driver and passenger seat with lumbar support, Design Selection LOFT Upholstery in fabric, Bright decorative trims, Mechanical rear seat release, Wheelbase, Without decorative films/emblems, Carrier frequency 433.92 MHz-434.42 Mhz, LED headlamps, Trailer hitch preparation, Additional retro-reflectors (door area), Rear shock absorption- chassis with increased ride height, Left-hand drive, Infotainment Bolero/Amundsen/Columbus (MIB3), Suspension range 10 installation control only- no requirement forecast, Without lane change assist, Without rear stabilizer bar, Antenna for FM reception only- diversity, Remote Access / Remote Access + Online Infotainment, Tires 215/50 R18 92W, Fuel filler cap, Additional 4 loudspeakers rear, Without folding table on front seat backrest, Brake pad wear indicator, Without alternative drive system, Exterior mirror housings and various add-on parts in body color, Reading light in front, Without auxiliary heater/parking heater, 2 spoke multi-function leather steering wheel with heating and with DSG paddles, Separate daytime running light with automatic headlight control and manual Coming and Leaving Home feature, Standard pedal cluster, Activated carbon canister (Evaporative Emission Control System (EVAP)), Shock absorption in front, 4-cylinder SI engine 1.5 l/110 kW TSI base engine is TJ7/N09/T9F/T57/T0D, Advanced driver attention & drowsiness monitor, "SUNSET", 3-point seat belts in front- with tensioner and height adjustment, Speed-related variable steering assist (Servotronic), Electronic immobilizer, Without "drive select", Folding grab handles- multi-piece, Without camera systems/accident sensors, Adaptive cruise control (with "follow-to-stop") and speed limiter, Driving on the right, Without floor mats, Freely programmable instrument cluster Basic, Inside rear view mirror automatically dimming, Storage compartment package 3, MPV, Special identification label for EC for M1 passenger vehicles, Child seat anchors for child seat system ISOFIX, Rear axle weight-type 1, Rear fog lamp, 12-volt socket in luggage boot, Exterior mirrors- auto-dimming- power-folding/adjustable/heated, 3-point seat belts- outer rear with ECE label, Without ECO function, DAB - Digital radio reception, Bright roof rails, Aero hubcaps black, Gearshift knob/handle in leather, 7-speed automatic transmission, Rear window wiper and washer system with intermittent control, Tyre pressure monitoring, Lane Assist (without HOD), Instrument cluster- km/h speedometer, Tailgate/trunk lid release from inside (electrically), Without delivery equipment, Breakdown kit, Without electric motor (hybrid), Standard battery/alternator capacity, Type approval country Denmark, Front-wheel drive, "SMART LINK" (wired and wireless), Driver knee airbag, Without emblem package, 3rd rear headrest, Without partition, Installation differentiation for transmission DQ200 -- vehicle components --, Curb weight range 1, Refrigerant R1234yf, Standard rear axle, Part set without country-specific prescriptive standard, 4-cylinder SI engine 1.5 l unit 05E.D, No special purpose vehicle- standard equipment, Hight adjustable driver and passenger seat, LongLife Service Regime, With UNECE CS (R155) without SU (R156), Hill start assist, Windshield wiper intermittent control with light/rain sensor, Sun visors with illuminated vanity mirror on driver and front passenger side, Start-stop system with regenerative braking, Additional exterior noise suppression, Passenger seat-belt warning light (for all passengers), Nameplate set in basic style, Operating permit- alteration, Manual in Danish, Decorative inserts, Tires without specification of tire brand, Standard wheel bolts, Emergency call system eCall+, Standard bumpers, Standard manufacturing sequence, Door and side trim panel, Emission standard-WLTP3 M1- N1-//EU6EB, Battery 420 A (70 Ah), Without additional malfunction display, Washer fluid level indicator, LED rear combination lamp- variable lighting functions- special styling, Remote Access 3 years, Standard paint coating, Voice control, Door sills (front), Parking brake, Forward collision warning incl. autonomous emergency braking- for adaptive cruise control "high", Equipment options subset for Denmark

PICTURES



Picture viewer: <https://fm.bilsalg.dk/business/picturebrowser?t=full&guid=e1ba3074-a2cf-4442-b3ee-51f546eccb72&carid=24842281>

OVERVIEW OF DAMAGES AND SHORTAGES

N°	LOCATION	TYPE	SEVERITY	INSURANCE	NOTES	DAMAGE GROUP
1	Front Windscreen	Rep Defect	C5		Reporting done	



Severity explanation:

C0 = No damage / C1 = Simple preparation / C2 = Minor preparation needed / C3 = Can be smart repaired / C4 = Repair/spray paint / C5 = Need replacement

ELECTRICAL AND MECHANICAL CONDITION

N°	LOCATION	TYPE	NOTES
1	Is the car drivable	Yes	