

## KØRETØJSBESKRIVELSE - Škoda Karoq Selection 1.5 TSI



**Indregistreret (måned/år):**

6/2025

**Stelnummer:**

TMBJR7NUXS5057066

**Farve:**

Hvid Normal glans

**Kilometerstand:**

12.025

**Gear:**

DSG (7 Gear)

**Brændstoftype:**

Benzin

**Karosseri:**

SUV

**Antal døre:**

5

**Hjultræk:**

Forhjulstræk

**Model år:**

2022

**Motorydelse:**

110 kW

**Antal sæder:**

5

**Motorstørrelse (ccm)**

1498

**Interiør:**

Grå mørk Stof

## KØRETØJSDETALJER

**Antal nøgler afleveret:**

2

**Antal nummerplader afleveret:**

2

**Registreringsattest:**

Ingen

**Service dokumentation:**

Nej

**Inspektionsdato:**

23-06-2026

**Sidste service (år/måned):**

**Kilometertal ved sidste service:**

## KØRETØJETS OPSUMMERING AF BILENS TILSTAND

**Kan bilen køre**

Ja

**Lovligt dækmønster  
(minimum 1,6 mm)**

Ja

**HJUL**

TYPE	SÆSON	MÆRKE	POSITION	FÆLGE	STR.	DÆK
Påmonteret	Sommerdæk		Forrest til venstre	Aluminiumsfælg(e)	18"	5 mm
Påmonteret	Sommerdæk		Bagerst til højre	Aluminiumsfælg(e)	18"	5 mm
Påmonteret	Sommerdæk		Bagerst til venstre	Aluminiumsfælg(e)	18"	5 mm
Påmonteret	Sommerdæk		Forrest til højre	Aluminiumsfælg(e)	18"	5 mm

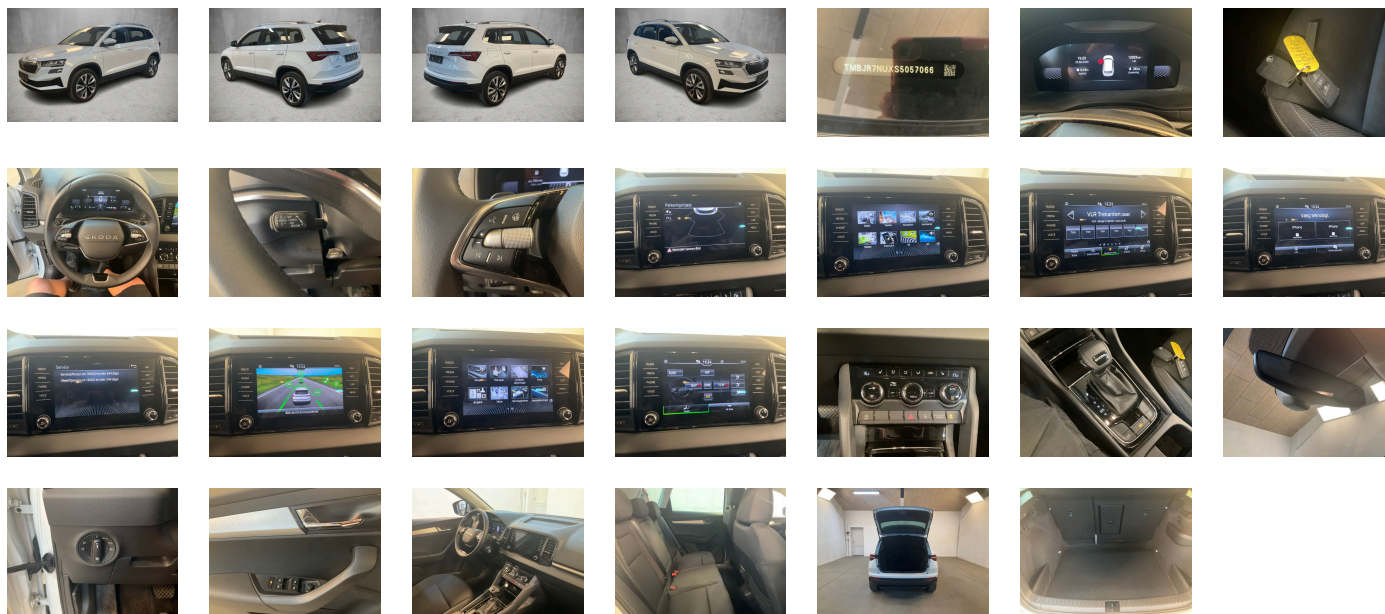
**Lovligt dækmønster (minimum 1,6 mm)**

Ja

**UDSTYR**




Without light control, Uden varmeakkumulator/tilskudsvarmer, Front fog lights, Vehicle class differentiation -5EP-, Fuel system for fuel-injected SI engine, Standard brændstoffpåfyldning, Luggage compartment floor covering in flat needle-punched nonwoven, Standard electronic engine sound, Radio Bolero, Comfort equipment, Operating voltage 12 V, Hovedairbags inklusive sideairbags foran, Bagerste udstødningsrør, Radiator grille, Without add. lights (interior lighting), Forlygtevaskere, Without interior light in footwell, Heat-reflecting windshield, Without storage compartments in trunk, No special edition, Without bracket, Rear floor panel module-type 7, Glasses storage compartment, Rear spoiler, Service indicator 30 000 km or 2 years ( variable ), Without supertone system and tone sequence control, Manual child safety lock, Nakkestøtter foran, Skivebremser foran 16", Climatronic klima anlæg, Electronic stability control (ESC), Regional code " ECE " for radio, Alternator 140 A, Standard klima anlæg zoner, Without additional noise suppression measures for passenger compartment, Standard tag, Two-tone horn, Without extended safety system, Non-smoker's package, Tool kit, Sidespejl højre side- konveks, Mobile phone interface, Headlight range control, Without tie down straps/net/pocket, Chrome package, Vejskiltegenkendelse, Unsplit rear seat bench- split folding backrest- with center armrest, Letmetalfælg "PROCYON" 7J x 18" - 4 stk., Without adapter, Extended and proactive pedestrian protection, Without child seat anchora in front (ISOFIX), Weight range 6 installation control only- no requirement forecast, "KESSY FULL" uden SAFE-system, Transportfolie, External- USB type C- only data socket(s), Without additional front underbody guard, Standard seats in front, 4 døre, Without special body measures, Without vehicle inlet, Front armrest "JUMBO BOX", Elopvarmede forsæder, Basic equipment variant, Without load-through hatch, Sidespejl venstre side- konveks, Uden dobbeltbund i bagagerum, Parkerings sensor bag, Key for locking system with remote control, Not hot country, Front stabilizer bar, Standard air cleaner, Without heated washer nozzles, Multifunktionskamera, Skærmskanstbeskyttelse, Power windows with comfort operation and circuit breaker, Disc brakes in rear, Without mud flap, Uden frigørelse af ryglæn til forsæder, Manuel justerbar lændestøtte på forsæder, Design Selection LOFT sædeindtræk i stof, Bright decorative trims, Mechanical rear seat release, Akselafstand, Without decorative films/ emblems, Carrier frequency 433.92 MHz-434.42 Mhz, LED headlamps, Trailer hitch preparation, Additional retro-reflectors (door area), Rear shock absorption- chassis with increased ride height, Left-hand drive, Infotainment Bolero/Amundsen/Columbus (MIB3), Suspension range 10 installation control only- no requirement forecast, Without lane change assist, Without rear stabilizer bar, Antenna for FM reception only- diversity, Remote Access / Infotainment Online, Dæk 215/50 R18, Fuel filler cap, Additional 4 loudspeakers rear, Uden foldbart bord på forsædernes ryglæn, Brake pad wear indicator, Without alternative drive system, Exterior mirror housings and various add-on parts in body color, Reading light in front, Without auxiliary heater/parking heater, 2-egget multifunktionslædderratt med ratvarme og DSG-skiftekontakter, Køreløshjælp samt coming og leaving home-funktion, Standard pedal cluster, Activated carbon canister (Evaporative Emission Control System (EVAP)), Shock absorption in front, 4-cylinder SI engine 1.5 l/110 kW TSI base engine is TJ7/N09/T9F/T57/T0D, Advanced driver attention & drowsiness monitor, "SUNSET", 3-point seat belts in front- with tensioner and height adjustment, Speed-related variable steering assist (Servotronic), Electronic immobilizer, Without "drive select", Folding grab handles- multi-piece, Without camera systems/accident sensors, Adaptiv fartpilot, Driving on the right, Uden måtter, Freely programmable instrument cluster Basic, Bakspejl med automatisk afblænding, Storage compartment package 3, MPV, Special identification label for EC for M1 passenger vehicles, Child seat anchors for child seat system ISOFIX, Rear fog lamp, 12-volt socket in luggage boot, Exterior mirrors- auto-dimming- power-folding/adjustable/heated, Rear axle weight- type 1, 3-point seat belts- outer rear with ECE label, Without ECO function, DAB - digital radiomodtagelse, Tagræling i sølv-look, Aerokappe- sort, Gearshift knob/handle in leather, 7-speed automatic transmission, Rear window wiper and washer system with intermittent control, Tyre pressure monitoring, Lane Assist (uden HOD), Instrument cluster- km/h speedometer, Tailgate/trunk lid release from inside (electrically), Without delivery equipment, Dækreparationssæt, Without electric motor (hybrid), Standard battery/alternator capacity, Type approval country Denmark, Front-wheel drive, "SMART LINK" (trådløst med Apple), Knæairbag til fører, Without emblem package, 3. hovedstøtte bagi, Uden netadskillelse, Installation differentiation for transmission DQ200 -- vehicle components --, Curb weight range 1, Refrigerant R1234yf, Standard rear axle, Part set without country-specific prescriptive standard, 4-cylinder SI engine 1.5 l unit 05E.D, No special purpose vehicle- standard equipment, Hill start assist, Manuel højdejusterbare forsæder, LongLife Service Regime, With UNECE CS (R155) without SU (R156), Windshield wiper intermittent control with light/rain sensor, Sun visors with illuminated vanity mirror on driver and front passenger side, Start-stop system with regenerative braking, Additional exterior noise suppression, Passenger seat-belt warning light (for all passengers), Nameplate set in basic style, Operating permit- alteration, Instruktionsbog på dansk, Decorative inserts, Tires without specification of tire brand, Standard wheel bolts, Nødopkaldssystem eCall+, Standard bumpers, Standard manufacturing sequence, Door and side trim panel, Emission standard- WLTP3 M1- N1-l//EU6EB, Battery 420 A (70 Ah), Without additional malfunction display, Washer fluid level indicator, LED rear combination lamp- variable lighting functions- special styling, Remote Access 3 år, Standard paint coating, Stemmestyring (ikke på dansk), Panellister (forrest), Parking brake, Frontassistent inkl. adaptiv fartpilot, Equipment options subset for Denmark

**BILLEDER**



**Billedfremviser:** <https://fm.bilsalg.dk/business/picturebrowser?t=full&guid=b82cc7dc-6e06-4e18-8fbb-ab5f50de9ecf&carid=24842237>

## OVERSIGT OVER SKADER OG MANGLER

N°	LOKATION	TYPE	GRAD	STATUS	NOTER	SKADESGRUPPE
1	H. Bagerste Fælg	Ridse	K4	Skade ikke anmeldt		
						
2	H. Forreste Fælg	Ridse	K4	Skade ikke anmeldt		
						
3	Forkofanger	Stenslag	K3			
						

### Forklaring:

K0: Fejlfri

K1: Kan fjernes ved klargøring/polering

K2: Mindre. Overfladisk. Synligt efter klargøring

K3: Smart repair. Dyb

K4: Dyb. Skal repareres/males

K5: Dyb. Skal erstattes

## ELEKTRISK OG MEKANISK STAND

N°	LOKATION	TYPE	NOTER
1	Kan bilen køre	Ja	