

**VEHICLE DESCRIPTION - Seat Arona Dynamic FR 1.0 TSI**



|  |                                      |
|--|--------------------------------------|
| <b>First registration date:</b><br>5/2025    | <b>VIN:</b><br>VSSZZKJ4SR593415      |
| <b>Colour:</b><br>Charcoal gray Normal gloss | <b>Mileage (km):</b><br>13.399       |
| <b>Gear:</b><br>Automatic (7 Gears)          | <b>Fuel type:</b><br>Gasoline        |
| <b>Body type:</b><br>SUV                     | <b>Number of doors:</b><br>5         |
| <b>Drive type:</b><br>FWD                    | <b>Model year:</b><br>2021-2025      |
| <b>Engine power:</b><br>85 kW                | <b>Number of seats:</b><br>5         |
| <b>Engine size (cc):</b><br>999              | <b>Interior:</b><br>Dark blue Fabric |


**VEHICLE DETAILS**

|                                       |   |  |                                      |
|---------------------------------------|---|--|--------------------------------------|
| <b>Number of keys:</b><br>2           | <b>Number of license plates:</b><br>2       | <b>Registration certificate:</b><br>Part 1 present | <b>Service documentation:</b><br>Yes |
| <b>Inspection date:</b><br>04-06-2026 | <b>Last service (year/month):</b><br>2025/5 | <b>Mileage (km) at last service:</b><br>1          |                                      |

**SUMMARY OF THE VEHICLE'S CONDITION**

|  |  |
|--|--|
| <b>Is the car in a driveable condition:</b><br>Yes | <b>Legal tire tread (minimum 1.6 mm):</b><br>Yes |
|--|--|

## WHEELS

|  TYPE | SEASON       | BRAND | POSITION    | RIM       | SIZE | TREAD |
|---|--------------|-------|-------------|-----------|------|-------|
| Fitted  | Summer tires |       | Front Left  | Alloy rim | 17"  | 5 mm  |
| Fitted  | Summer tires |       | Rear Right  | Alloy rim | 17"  | 6 mm  |
| Fitted  | Summer tires |       | Rear Left   | Alloy rim | 17"  | 6 mm  |
| Fitted  | Summer tires |       | Front Right | Alloy rim | 17"  | 5 mm  |

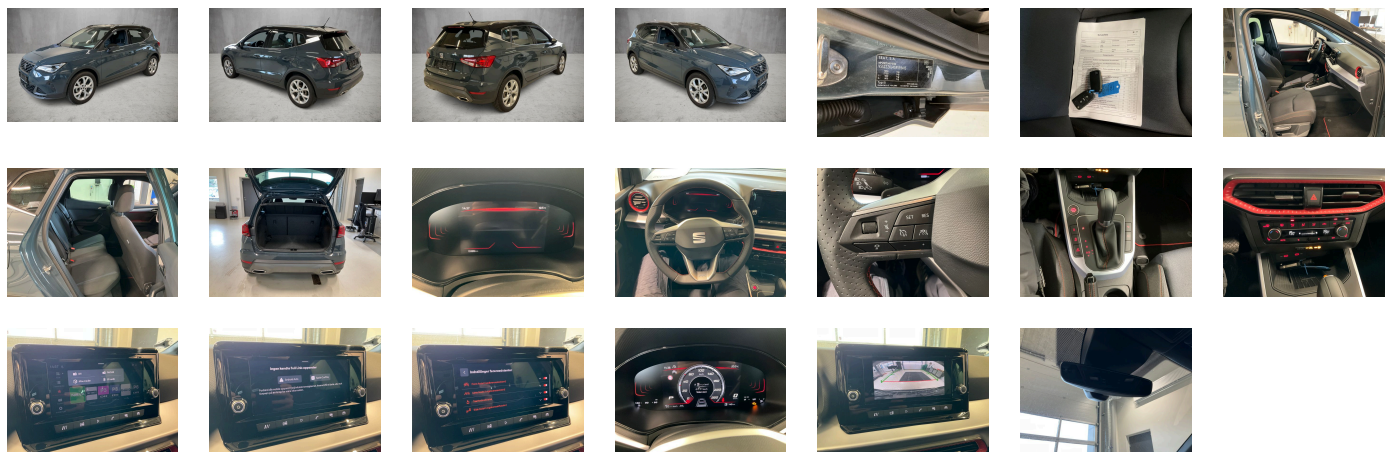
### Legal tire tread (minimum 1.6 mm):

Yes

## ACCESSORIES


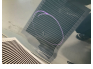
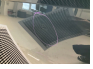
Dynamic headlight range control (self-adjusting while driving), Without surface protection- with additional transport protection measures, Central locking system Keyless Entry without SAFELOCK, Standard design, Antifreeze up to -25 degree Celsius tolerance up to -30 degree C, External- USB type C- only data socket(s), Without additional front underbody guard, Standard seats in front, 4 doors, Extended and proactive pedestrian and cyclist protection, Rear overhang- short, In-plant control of self-collection, Without first aid kit and warning triangle, Variant, Plane luggage/load compartment floor in rear, Fresh air intake system with combination filter, Without heated washer nozzles, Without lumbar support in seat backrests, Without backrest release for front seats, Bright decorative trims, Without trailer hitch, Wheelbase, Front stabilizer bar, Vehicle class differentiation -6F0-, Vehicles with special upgrade measures, Online service- with OCU- without head unit coding- without engine immobilizer interconnection, 6 speakers (passive), Keyless locking and starting system Keyless Access without SAFELOCK, Unsplit molded headliner, Without navigation device, 2 reading lights in front, Without additional tires, Leather-wrapped multi-function sports steering wheel with tiptronic, Connectivity Box: wireless charging station for mobile phone, Activated carbon canister (Evaporative Emission Control System (EVAP)), Without CD changer/CD player, Decorative inserts, Advanced driver attention & drowsiness monitor, Shock absorption in front, Side windows in heat-insulating glass- from B-pillar and rear window dark tinted, LED rear combination lamp, Reduced price package, Electronic immobilizer, Adaptive cruise control (with "follow-to-stop") and speed limiter, Driving on the right, Without floor mats, Breakaway interior rearview mirror- auto-dimming, Driving profile selection and conventional shock absorber, MPV, Special identification label for EC for M1 passenger vehicles, Rear fog lamp, Hand brake lever handle in leather, 3-point seat belts- outer rear with ECE label, Digital radio reception, Reduced price package, Interior package: double floor- front center armrest, Gearshift knob/handle in leather, 7-speed automatic transmission "A7", Without special color trim, "Standard Plus" version, Vision Plus package: Park Assist with rear view camera system, Breakdown kit, Without applications, Without fire extinguisher, Front-wheel drive, Tires 205/55 R17 91V super-low rolling resistance- generation 2, Type sign and company logo, Wired & Wireless App-Connect, Refrigerant R1234yf, Installation differentiation for transmission DQ200 -- vehicle components --, Control of series production, No special purpose vehicle- standard equipment, Standard dashboard, Manual height adjustment for front seats, LongLife Service Regime, Safe & Driving package XL (in combination with "Media System"), Manual in Danish, Tires without specification of tire brand, Standard manufacturing sequence, Door and side trim panel, Electronic differential lock XDS- dynamic traction support, Sentinel package: (Style: power-adjustable and heated exterior mirrors), Without washer fluid level indicator, LED license plate lighting, Without second battery, Special paint coating, Without special specifications, Comfort bumper- with chrome molding, Without voice control, Without front fog lamps, High-beam control, Without heat accumulator/auxiliary heater, Initial standard fuel filling, Luggage compartment trim (design 1), Without headlamp washer system, Top sports equipment, Without customized installation, Rear floor panel module- type 1, Interior light in footwell, No special edition, Mounting fixture in luggage compartment, Service indicator 30 000 km or 2 years ( variable ), Regional code " ECE " for radio, Alternator 140 A, Entry-level infotainment system radio upgrade (UNECE), Standard climatic zones, Disc brakes in front (Geomet D), Single-tone horn, Without extended safety system, Non-smoker's package, Seat trim covers in fabric, Right exterior mirror- convex, Comfort telephony without external antenna connection, Chrome package, Unsplit rear seat bench- split folding backrest, Weight range 9 installation control only- no requirement forecast, Without special body measures, Center armrest in front, Seat heater for front seats separately controlled, Left exterior mirror- convex, SEAT Full LED, Not hot country, Park assist, Standard air cleaner, With multifunction camera, Power windows with comfort operation and circuit breaker, Additional body cover on wheel arch and side sill, Disc brakes in rear (Geomet D), Carrier frequency 433.92 MHz-434.42 Mhz, Emblems, Antenna for AM/FM reception, Protective side molding, Rear shock absorption, LED headlamps with lens, Left-hand drive, Lane change assist, 3-cylinder SI engine 1.0 l unit 05C.B, Without alternative drive system, Three rear head restraints, Without auxiliary heater/parking heater, Separate daytime running light with automatic headlight control and manual Coming and Leaving Home feature, Standard pedal cluster, Exterior mirror housings painted, 3-cylinder gasoline engine 1.0 l/85 kW- TSI base engine: TJ4- "TSI", 3-point seat belts in front- with belt clamping device- without height adjustment, Power steering, With rear view camera system (type 1), Freely programmable instrument cluster Basic, Exterior mirrors- power-folding/adjustment- heated, Child seat anchors for child seat system ISOFIX, Suspension range 30 installation control only- no requirement forecast, Special control, Trims for alloy wheels, Without luggage nets/pockets on backrests, ECO function, Bright roof rails, Without drawers under front seats, Rear window wiper and washer system with intermittent control, Tire pressure monitoring system, Lane keeping system plus traffic jam assist, Instrument cluster- km/h speedometer, Without delivery equipment, Airbag on driver and front passenger side- without knee airbag- with front passenger airbag deactivation, Type approval country Denmark, 3-point seat belt for center rear seat, Part set without country-specific prescriptive standard, Standard rear axle, With UNECE CS (R155) without SU (R156), Visual and acoustic seat belt reminder- electric contact in front and rear, Hill start assist, Windshield wiper intermittent control with light/rain sensor, Start-stop system with regenerative braking, Standard wheel bolts, Alloy wheels 6.5J x 17, Private emergency call system, Sun visors with mirror- airbag label on front passenger sun visor, Luggage compartment cover- folding, Nameplate set, Forward collision warning incl. autonomous emergency braking- for adaptive control "high", Equipment options subset for Denmark, Fuel system for fuel-injected SI engine (tropicalized), Battery 320 A (49 Ah), Emission standard- WLTP3 M1- N1- l/EU6EA, Axial and vertical adjustable steering column, Operating permit- alteration, Special price, Side airbag in front with curtain airbag, Rear exhaust tailpipe (standard), Heat-reflecting windshield, Interior ambient lighting- type 1, Rear spoiler, Front head restraints, Climatronic with impact pressure control- CFC-free, Electronic stability control (ESC), Vent, Without roof insert (standard roof), Special interior noise suppression, Tool kit, With dynamic road sign display

**PICTURES**



**Picture viewer:** <https://fm.bilsalg.dk/business/picturebrowser?t=full&guid=bb197175-a31f-4fc5-850f-a49259b49490&carid=24835650>

## OVERVIEW OF DAMAGES AND SHORTAGES

| N° | LOCATION  | TYPE  | SEVERITY  | INSURANCE | NOTES          | DAMAGE GROUP |
|----|---|---|---|-----------|----------------|--------------|
| 1  | L. Front door   | Dent  | C4  |           | Reporting done |              |
|    |  |  |  |           |                |              |

Severity explanation:

C0 = No damage / C1 = Simple preparation / C2 = Minor preparation needed / C3 = Can be smart repaired / C4 = Repair/spray paint / C5 = Need replacement

## ELECTRICAL AND MECHANICAL CONDITION

| N° | LOCATION                   | TYPE   | NOTES |
|----|----------------------------|--------|-------|
| 1  | Is the car drivable        | Yes    |       |
| 2  | Warning Indicators, Engine | Lights |       |