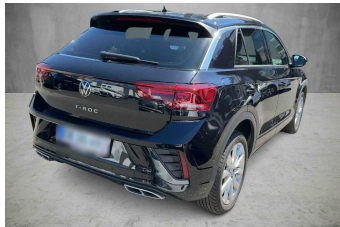


**VEHICLE DESCRIPTION - VW T-ROC R Line 1.5 TSI**



**First registration date:**  
5/2025

**VIN:**  
WVGZZA10SV119726

**Colour:**  
null Metallic Normal gloss

**Mileage (km):**  
15.493

**Gear:**  
Automatic (7 Gears)

**Fuel type:**  
Gasoline

**Body type:**  
SUV

**Number of doors:**  
5

**Drive type:**  
FWD

**Model year:**  
2021-2025

**Engine power:**  
110 kW

**Number of seats:**  
5

**Engine size (cc):**  
1498

**Interior:**  
Grey Partial leatherette

**VEHICLE DETAILS**

**Number of keys:**  
2

**Number of license plates:**  
2

**Registration certificate:**  
Part 1 & 2 present

**Service documentation:**  
No

**Inspection date:**  
28-05-2026

**Last service (year/month):**


**Mileage (km) at last service:**

**SUMMARY OF THE VEHICLE'S CONDITION**

**Is the car in a driveable condition:**  
Yes

**Legal tire tread (minimum 1.6 mm):**  
Yes

## WHEELS

 TYPE	SEASON	BRAND	POSITION	RIM	SIZE	TREAD
Fitted	Summer tires		Front Left	Alloy rim	18"	5 mm
Fitted	Summer tires		Rear Right	Alloy rim	18"	6 mm
Fitted	Summer tires		Rear Left	Alloy rim	18"	6 mm
Fitted	Summer tires		Front Right	Alloy rim	18"	5 mm

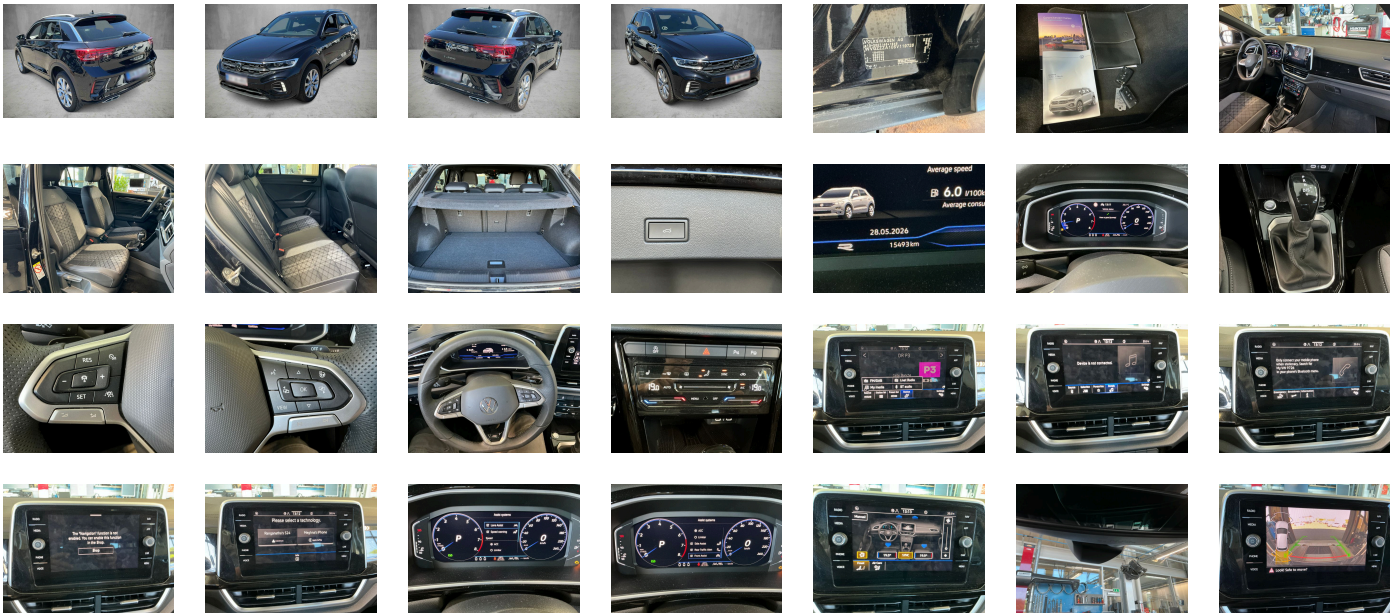
**Legal tire tread (minimum 1.6 mm):**

Yes

## ACCESSORIES




Driving on the right, R-Line, Part set without country-specific prescriptive standard, Type approval country Denmark, Operating permit- alteration, 4-cylinder SI engine 1.5 l TSI- 110 kW, Without ECO function, Online service- with OCU- with head unit coding- without engine immobilizer interconnection, Advanced driver attention & drowsiness monitor, Regional code " ECE " for radio, Without vehicle inlet, Without charging cable, No special edition, Standard paint coating, Basic equipment variant, No special purpose vehicle- standard equipment, Electronic engine sound, Vehicles with special upgrade measures, Shock absorption in front, 7-speed automatic transmission or dual-clutch transmission DSG- note: PR family EDF, Tires 215/50 R18 low rolling resistance, Battery 380 A (59 Ah) EFB+, Rear view camera system, Refrigerant R1234yf, Hatchback, Left-hand drive, Suspension range 03 installation control only- no requirement forecast, With UNECE CS (R155) without SU (R156), Standard battery/alternator capacity, Emergency call service-10-year contract duration as of initial delivery- condition: mob. phone network available, Inserts of front and outer rear seats in fabric "R-Line"- inner sides of bolsters in ArtVelours microfleece, 4-cylinder SI engine 1.5 l unit 05E.D, Easy Open package without SAFELock, LED Plus headlamps, "Grange Hill" 7J x 18- painted in Sterling Silver- R-Line special edition for EU, LongLife Service Regime, Without voice control, Service indicator 30 000 km or 2 years (variable), Chrome elements on rotary light switch- power mirror switch- window regulator switches, vents with chrome frames, Multifunction camera, Drawer under right front seat, White ambient lighting, Dynamic Road Sign Display, Digital radio reception DAB+, Sports comfort seats in front, Infotainment package "Ready 2 Discover", Reduced price, Rear shock absorption- chassis with increased ride height, Without exterior ambient lighting, Hill start assist, Electromechanical parking brake with Auto Hold function, 4 alloy wheels "Grange Hill" 7J x 18- painted in Sterling Silver, Instrument cluster with electronic speedometer- odometer and trip odometer- tachometer, 2 USB-C ports in the front- 2 USB-C charging sockets on the center console in rear- charging capacity up to 45 W, Pedals in brushed stainless steel, Pedestrian Monitoring, Tires without specification of tire brand, IQ.DRIVE assistance systems package, Winter package, No German text in language code de\_VW, Special edition 2024/2025 for EU Life forces: PJC-4KF-KA1-4I3/4F2 R-Line forces: PJH-4KF-KA1-4I3/4F2-PXB, Preparation for VW Connect and VW Connect Plus, Front stabilizer bar, 4 doors, Without rear stabilizer bar, Wheelbase, Dual-clutch transmission DSG DQ200, Standard manufacturing sequence, Without decals and emblems, Without alternative drive system, Vehicle class differentiation -2GA-, Elimination of nameplate for engine designation on luggage compartment lid, Standard rear axle, Rear exhaust tailpipe (standard), Carpet mats in front and rear, Manual in Danish, Weight range 4 installation control only- no requirement forecast, Standard climatic zones, Electronic Stability Control w/ driver steering recommendation- ABS- ASR- EDL- EDTC and trailer stabilization, Fuel system for fuel-injected SI engine, Without trailer hitch, Special identification label for EC for M1 passenger vehicles, Activated carbon canister (Evaporative Emission Control System (EVAP)), Tire Mobility Set: 12-volt compressor and tire sealant, Surround lighting with welcome light, Trims for alloy wheels, Electromechanical speed-sensitive power steering, Wheel locks with extended theft protection, Without additional front underbody guard, Tool kit, Warning triangle, Without folding table on front seat backrest, Elimination of cooling system of glove compartment, Front-wheel drive, Disc brakes in front, Initial standard fuel filling, Disc brakes in rear, Without Adaptive Chassis Control, Bumpers in "R-Line" style, Leather-wrapped multi-function sports steering wheel- heated- with touch control and shifting paddles, Without additional tires, Without electric motor (hybrid), ISOFIX anchorage points (mounting fixture for 2 child seats on rear bench seat), Without partition, Standard roof, Luggage compartment floor adjustable in 2 heights- for flat cargo area, Completely folding front passenger seat backrest, Door and side trim panel in foam film- insert in leatherette, Front seats with height adjustment, Asymmetric split folding rear seat backrest- with center armrest, 3-point seat belts in front with height adjustment and seat belt pretensioners, Silver-anodized roof rails, 3 head restraints in rear, 3-point seat belts with seat belt pretensioners for the outer rear seats, Heated front seats, Laminated safety glass windshield- heat-insulating, Keyless locking and starting system Keyless Access without SAFELock, Privacy glass for rear side windows and rear window, Auto-dimming interior rearview mirror, Rear floor panel module- type 7, Power windows, Driver and front passenger airbag with front passenger airbag deactivation, Emission standard- WLTP3 M1- N1-I//EU6EB, Curtain airbag system for front and rear passengers incl. side airbags in front, Body-colored door lower parts, Without special body measures, Carrier frequency 433.92 MHz-434.42 Mhz, Easy Open & Close - sensor controlled luggage compartment opening and closing with remote unlocking, Exterior mirrors: aspherical on driver side- convex on front passenger side, Without surface protection- with additional transport protection measures, Decorative inserts "Lava Stone Black" for dashboard- center console and front door trim panels, Illuminated vanity mirrors in sun visors, Safety-optimized front head restraints, Without fire extinguisher, Center armrest in front, Exterior mirror housings in roof color, Travel Assist- Lane Assist and Emergency Assist, Light unit in front footwell, Autonomous Emergency Braking Front Assist (for Adaptive Cruise Control ACC up to 210 km/h), Black headliner, Gearshift knob in leather, Exterior mirrors- power-adjustable- folding- and heated- with memory feature, Electronic immobilizer, Without socket, Without heat accumulator/auxiliary heater, Tire Pressure Monitoring System, Start-stop system with regenerative braking, Front scuff plates with "R-Line" logo, Lumbar supports in front, Preparation for subsequent activation: Navigation feature "Discover Media", Proactive passenger protection system in combination with Front Assist and Side Assist, Park Assist with Park Distance Control, Lane change system Side Assist, Radio, Alternator 140 A, High-beam control Light Assist, LED Plus headlamps with LED separate daytime running light, Rear window wiper with intermittent control, Rain sensor, Dynamic headlight range control, 6 speakers, 2 LED reading lights in front and 2 in rear, Rear fog light on one side- back-up light on both sides, Adaptive Cruise Control ACC stop & go incl. speed limiter, Dark Red LED rear combination lamps, Cornering light and poor weather light, Warning lamp for washer fluid level, Without headlamp washer system, Two-tone horn, Diversity antenna for FM reception, Not hot country, Air Care Climatronic 2 zone automatic climate control with enhanced air filterwith activated carbon, Without preparation for two-way radio installation, Automatic headlight control with LED separate daytime running light and exit and entry lighting, Non-smoker's package: Storage compartment and 12-V outlet in front, Without auxiliary heater/parking heater, Warning signal and warning lamp for front and rear seat belts not fastened, Multi-color Digital Cockpit Pro- selection of different info profiles possible, Retro-reflectors in all doors, Without heated washer nozzles, Brake pad wear indicator, App-Connect Wireless for Apple CarPlay and Android Auto, Mobile phone interface with inductive charging feature, Operating voltage 12 V, Equipment options subset for Denmark

**PICTURES**



**Picture viewer:** <https://fm.bilsalg.dk/business/picturebrowser?t=full&guid=4f74b784-2bdb-4209-9723-1e264e673a8c&carid=24798536>

## OVERVIEW OF DAMAGES AND SHORTAGES

N°	LOCATION	TYPE	SEVERITY	INSURANCE	NOTES	DAMAGE GROUP
1	R. Front Rim	Scratch	C4		Reporting needed	
						
2	L. Roof Pillar, C-Pillar	Dent	C3			
						
3	Rear Bumper	Scratch	C3			
						

Severity explanation:

C0 = No damage / C1 = Simple preparation / C2 = Minor preparation needed / C3 = Can be smart repaired / C4 = Repair/spray paint / C5 = Need replacement

## ELECTRICAL AND MECHANICAL CONDITION

N°	LOCATION	TYPE	NOTES
1	Is the car drivable	Yes	