

VEHICLE DESCRIPTION - Škoda Kamiq Selection 1.0 TSI



First registration date:
5/2025

VIN:
TMBGR9NW9S3108513

Colour:
Gray Metallic Normal gloss

Mileage (km):
13.830

Gear:
Automatic (7 Gears)

Fuel type:
Gasoline

Body type:
SUV

Number of doors:
5

Drive type:
FWD

Model year:
2024

Engine power:
85 kW

Number of seats:
5

Engine size (cc):
999

Interior:

VEHICLE DETAILS

Number of keys:
2

Number of license plates:
2

Registration certificate:
Part 1 present

Service documentation:
No

Inspection date:
01-06-2026

Last service (year/month):

Mileage (km) at last service:

SUMMARY OF THE VEHICLE'S CONDITION

Is the car in a driveable condition:
Yes

Legal tire tread (minimum 1.6 mm):
Yes

WHEELS

TYPE	SEASON	BRAND	POSITION	RIM	SIZE	TREAD
Fitted	Summer tires		Front Left	Alloy rim	16"	6 mm
Fitted	Summer tires		Rear Right	Alloy rim	16"	6 mm
Fitted	Summer tires		Rear Left	Alloy rim	16"	6 mm
Fitted	Summer tires		Front Right	Alloy rim	16"	6 mm

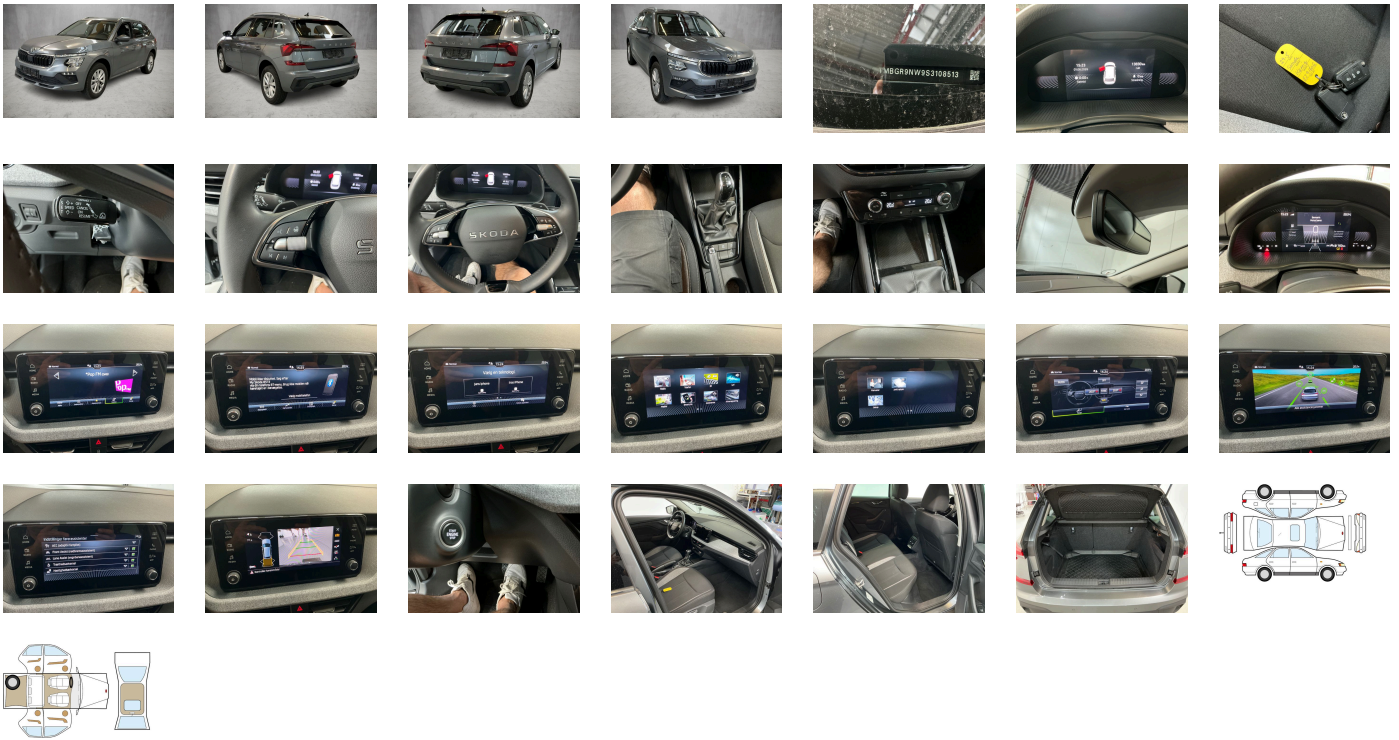
Legal tire tread (minimum 1.6 mm):

Yes

ACCESSORIES

Vehicle class differentiation -655-, Battery 320 A (49 Ah), Without light control, Without heat accumulator/auxiliary heater, Without two-sided floor surface, Axial and vertical adjustable steering column, Initial standard fuel filling, Fuel system for fuel-injected SI engine (tropicalized), Front fog lamp and cornering lamp, Selection, With umbrella, Side airbag in front and rear with curtain airbag, Without headlamp washer system, Without add. lights (interior lighting), Rear floor panel module-type 1, Radiator grille with chrome molding, No special edition, Without bracket, Spectacle storage compartment/bracket, Mounting fixture in luggage compartment, Service indicator 30 000 km or 2 years (variable), Heat-reflecting windshield, Climatronic with impact pressure control- CFC-free, Electronic stability control (ESC), Regional code " ECE " for radio, Alternator 140 A, Entry-level infotainment system radio upgrade (UNECE), Rear shock absorption, Standard climatic zones, Disc brakes in front (Geomet D), Interiorbars and air vents frame Black glossy, Without additional noise suppression measures for passenger compartment, Without roof insert (standard roof), Single-tone horn, With trim panel, Non-smoker's package, Tool kit, Crew Protect Assist, Right exterior mirror- convex, Bluetooth, Headlight range control, With dynamic road sign display, Without adapter, Luggage net, Seat trim covers in fabric, Without waste bin, Central locking system Keyless Entry without SAFELock, Transport protection film with additional transport protection measures, Antifreeze up to -25 degree Celsius tolerance up to -30 degree C, Unsplit rear seat bench- split folding backrest, External- USB type C data socket(s) and charging socket(s) with increased charging capacity, 4 doors, Extended and proactive pedestrian and cyclist protection, Rear overhang- short, Additional front underbody guard, Center armrest in front "Jumbo Box", Weight range 13 installation control only- no requirement forecast, Seat heater for front seats separately controlled, Drum brakes in rear, Basic equipment variant, Left exterior mirror- convex, Alloy wheels 6J x 16" CORTADERO, Without luggage/load compartment floor, Glove compartment door with light, Fresh air intake system with combination filter, Rear and front parking sensors, Without additional side body covers (stone guard), Key for locking system with remote control, Not hot country, Without heated washer nozzles, With multifunction camera, Power windows with comfort operation and circuit breaker, Without backrest release for front seats, Tires 205/60 R16 92V, Manually adjustable lumbar support in front seats, Without trailer hitch, Wheelbase, Without decorative films/emblems, Front stabilizer bar, Without protective side molding, Carrier frequency 433.92 MHz-434.42 Mhz, LED headlamps, Without electronic steering column lock, Standard Seats, Left-hand drive, Grey ceiling, Window frame in chrome, Remote Access / Pro-active service, Without lane change assist, Antenna for FM reception only- diversity, 3-cylinder SI engine 1.0 l unit 05C.B, Fuel filler cap, 8 speakers (passive), Without folding table on front seat backrest, Without alternative drive system, Outside door mirrors and door handles in body color, Without navigation device, Three rear head restraints, Without auxiliary heater/parking heater, Separate daytime running light with automatic headlight control and manual Coming and Leaving Home feature, Standard pedal cluster, Activated carbon canister (Evaporative Emission Control System (EVAP)), Child seat anchors f. child seat system i-Size- 2x top tether and child seat anchors in front on front passenger side, 3-cylinder SI engine 1.0 l/85 kW TSI base engine is Tj4/T0R/T26/T0M/T1D/T6A, Advanced driver attention & drowsiness monitor, Suspension range 25 installation control only- no requirement forecast, Shock absorption in front, Sunset, Power steering, 3-point seat belts in front- with tensioner and height adjustment, Electronic immobilizer, Hight-adjustable head restraints for front seats, Crossover, Adaptive cruise control (for DSG) with Speedlimiter, Driving on the right, With rear view camera system (type 2), Without storage compartment package/box, Without floor mats, Freely programmable instrument cluster Basic, Breakaway interior rearview mirror- auto-dimming, Drive Mode Select without Chassis Presets, Special identification label for EC for M1 passenger vehicles, Standard tailgate, 12-volt socket in luggage boot, exterior mirrors- dimmable on driver side- power folding- adjustable- heated, Without refrigerator/glove compartment cooling system, Rear axle weight- type 1, 3-point seat belts- outer rear with ECE label, Trims for alloy wheels, DAB - Digital radio reception, ECO function, Without drawers under front seats, Roof rails, Gearshift knob/handle in leather, 7-speed automatic transmission, Rear window wiper and washer system with intermittent control, Tire pressure monitoring system, "Standard Plus" version, Lane assist +, Instrument cluster- km/h speedometer, Tailgate without electrical opening, Without delivery equipment, Breakdown kit, Operating permit- alteration, Without fire extinguisher, Type approval country Denmark, 3-point seat belt for center rear seat, Front-wheel drive, Wired & Wireless Smart Link+, Driver knee airbag, Without partition, Installation differentiation for transmission DQ200 -- vehicle components --, Curb weight range 1, Refrigerant R1234yf, Part set without country-specific prescriptive standard, No special purpose vehicle- standard equipment, Standard rear axle, Manual height adjustment for front seats, LongLife Service Regime, Leather-wrapped multi-function steering wheel- heated- with tiptronic, With UNECE CS (R155) without SU (R156), Windshield wiper intermittent control with light/rain sensor, Visual and acoustic seat belt reminder- electric contact, Hill hold control, Sun visors with mirror and airbag label on front passenger side, Center console, Start-stop system with regenerative braking, Additional exterior noise suppression, Standard wheel bolts, Nameplate set in basic style, Manual in Danish, Tires without specification of tire brand, Emergency call system eCall+, Standard manufacturing sequence, Door panels with upholstery, Decorative inserts, Emission standard- WLTP3 M1- N1-l//EU6EB, LED rear combination lamp- dynamic turn signal- special styling, Net under the luggage compartment cover, Without additional malfunction display, Washer fluid level indicator, Without second battery, Remote Access 3 years, Standard paint coating, Without voice control, Body-colored bumpers, Without protective film for scuff plate, "FRONT ASSIST" incl. adaptive cruise control, Equipment options subset for Denmark

PICTURES



Picture viewer: <https://fm.bilsalg.dk/business/picturebrowser?t=full&guid=ad82b192-9895-426d-8f00-c97d284b16c3&carid=24775694>

OVERVIEW OF DAMAGES AND SHORTAGES

No damages or shortages

ELECTRICAL AND MECHANICAL CONDITION

N° LOCATION	TYPE	NOTES
1	Is the car drivable	Yes