

**VEHICLE DESCRIPTION - Škoda Kamiq Selection 1.0 TSI**



**First registration date:**  
5/2025

**VIN:**  
TMBGR9NW3S3107289

**Colour:**  
Black Metallic Normal gloss

**Mileage (km):**  
8.827

**Gear:**  
Automatic (7 Gears)

**Fuel type:**  
Gasoline

**Body type:**  
SUV

**Number of doors:**  
5

**Drive type:**  
FWD

**Model year:**  
2024

**Engine power:**  
85 kW

**Number of seats:**  
5

**Engine size (cc):**  
999

**Interior:**  
Black Fabric

**VEHICLE DETAILS**

**Number of keys:**  
2

**Number of license plates:**  
2

**Registration certificate:**  
Part 1 & 2 present

**Service documentation:**  
No

**Inspection date:**  
26-05-2026

**Last service (year/month):**

**Mileage (km) at last service:**

**SUMMARY OF THE VEHICLE'S CONDITION**

**Is the car in a driveable condition:**  
Yes

**Legal tire tread (minimum 1.6 mm):**  
Yes

## WHEELS

TYPE	SEASON	BRAND	POSITION	RIM	SIZE	TREAD
Fitted	Summer tires		Rear Right	Alloy rim	16"	7 mm
Fitted	Summer tires		Rear Left	Alloy rim	16"	6 mm
Fitted	Summer tires		Front Right	Alloy rim	16"	6 mm
Fitted	Summer tires		Front Left	Alloy rim	16"	6 mm

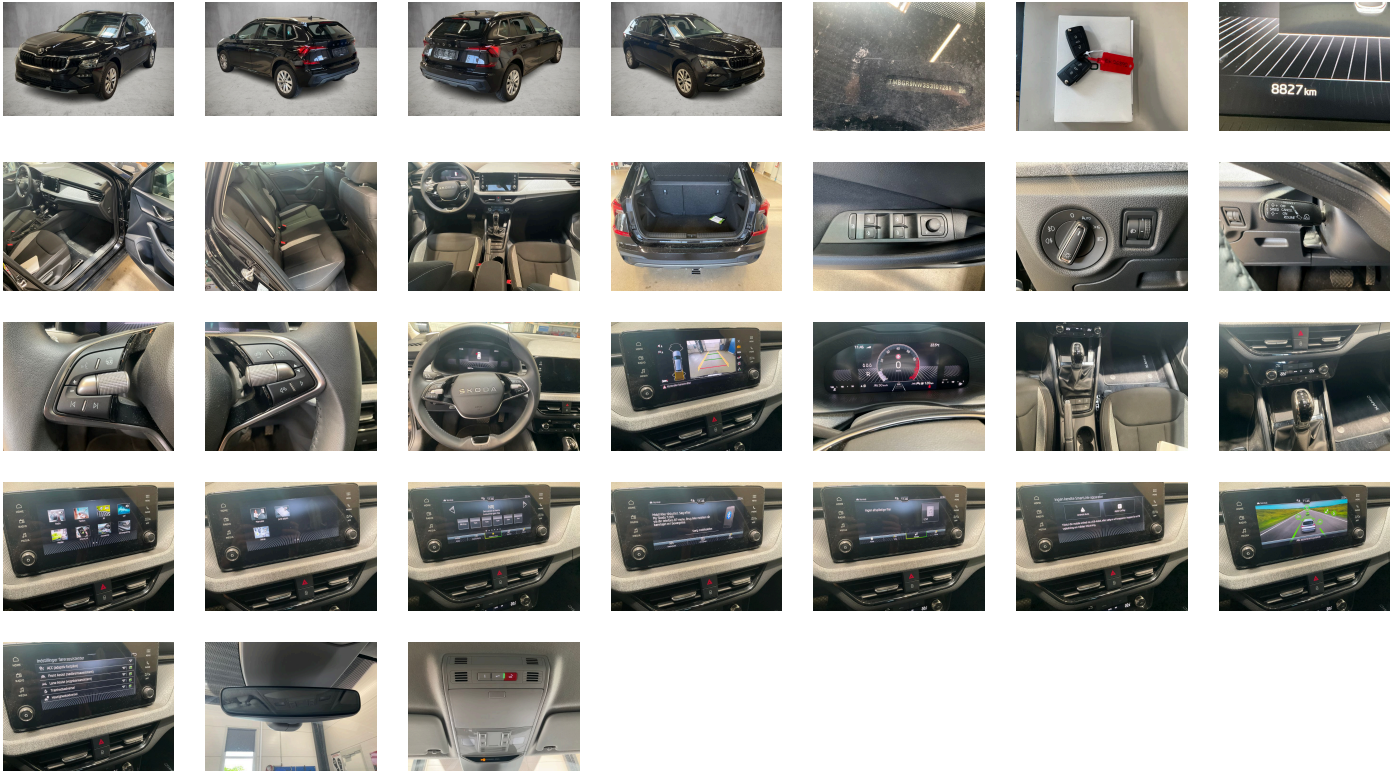
### Legal tire tread (minimum 1.6 mm):

Yes

## ACCESSORIES

Driving on the right, "Standard Plus" version, Selection, Part set without country-specific prescriptive standard, Type approval country Denmark, Alloy wheels 6J x 16" CORTADERO, Operating permit- alteration, 3-cylinder SI engine 1.0 l/85 kW TSI base engine is TJ4/T0R/T26/T0M/T1D/T6A, ECO function, Remote Access / Pro-active service, Advanced driver attention & drowsiness monitor, Regional code " ECE " for radio, No special edition, Standard paint coating, Basic equipment variant, No special purpose vehicle- standard equipment, Shock absorption in front, 7-speed automatic transmission, Tires 205/60 R16 92V, Without bracket, Curb weight range 1, Rear axle weight- type 1, Entry-level infotainment system radio upgrade (UNECE), Battery 320 A (49 Ah), With rear view camera system (type 2), Refrigerant R1234yf, With trim panel, Crossover, Left-hand drive, Suspension range 25 installation control only- no requirement forecast, Without adapter, With UNECE CS (R155) without SU (R156), With umbrella, Emergency call system eCall+, Seat trim covers in fabric, Without storage compartment package/box, LongLife Service Regime, Without voice control, Service indicator 30 000 km or 2 years ( variable ), With multifunction camera, Without drawers under front seats, Without add. lights (interior lighting), With dynamic road sign display, DAB - Digital radio reception, Standard Seats, 3-cylinder SI engine 1.0 l unit 05C.B, Rear shock absorption, Hill hold control, Instrument cluster- km/h speedometer, External- USB type C data socket(s) and charging socket(s) with increased charging capacity, Standard pedal cluster, Extended and proactive pedestrian and cyclist protection, Tires without specification of tire brand, Care connect 3 years, Front stabilizer bar, 4 doors, Wheelbase, Installation differentiation for transmission DQ200 -- vehicle components --, Standard manufacturing sequence, Without alternative drive system, Nameplate set in basic style, Standard rear axle, Without electronic steering column lock, Without floor mats, Manual in Danish, Weight range 13 installation control only- no requirement forecast, Standard climatic zones, Rear overhang- short, Electronic stability control (ESC), Fuel system for fuel-injected SI engine (tropicalized), Antifreeze up to -25 degree Celsius tolerance up to -30 degree C, Without trailer hitch, Special identification label for EC for M1 passenger vehicles, Activated carbon canister (Evaporative Emission Control System (EVAP)), Breakdown kit, Drum brakes in rear, Trims for alloy wheels, Power steering, Standard wheel bolts, Additional front underbody guard, Tool kit, Without folding table on front seat backrest, Without refrigerator/glove compartment cooling system, Front-wheel drive, Disc brakes in front (Geomet D), Initial standard fuel filling, Without delivery equipment, Additional exterior noise suppression, Axial and vertical adjustable steering column, Drive Mode Select without Chassis Presets, Body-colored bumpers, Fresh air intake system with combinationfilter, Fuel filler cap, Leather-wrapped multi-function steering wheel- heated- with tiptronic, Child seat anchors f. child seat system i-Size- 2x top tether and child seat anchors in front on front passenger side, Without partition, 3-point seat belt for center rear seat, Center console, Without roof insert (standard roof), Without luggage/load compartment floor, Without backrest release for front seats, High-adjustable head restraints for front seats, Door panels with upholstery, Manual height adjustment for front seats, Unsplit rear seat bench- split folding backrest, Mounting fixture in luggage compartment, 3-point seat belts in front- with tensioner and height adjustment, Three rear head restraints, Standard tailgate, Roof rails, Net under the luggage compartment cover, Without additional noise suppression measures for passenger compartment, 3-point seat belts- outer rear with ECE label, Seat heater for front seats separately controlled, Without protective side molding, Tailgate without electrical opening, Heat-reflecting windshield, Central locking system Keyless Entry without SAFELock, Sunset, Breakaway interior rearview mirror- auto-dimming, Rear floor panel module- type 1, Power windows with comfort operation and circuit breaker, Driver knee airbag, Emission standard- WLTP3 M1- N1-I//EU6EB, Side airbag in front and rear with curtain airbag, Without waste bin, Window frame in chrome, Glove compartment door with light, Carrier frequency 433.92 MHz-434.42 Mhz, Transport protection film with additional transport protection measures, Right exterior mirror- convex, Left exterior mirror- convex, Sun visors with mirror and airbag label on front passenger side, Without fire extinguisher, Without additional side body covers (stone guard), Center armrest in front "Jumbo Box", Outside door mirrors and door handles in body color, Without decorative films/emblems, Lane assist +, Radiator grille with chrome molding, "FRONT ASSIST" incl. adaptive cruise control, Interior bars and air vents frame Black glossy, Luggage net, Grey ceiling, Gearshift knob/handle in leather, Without two-sided floor surface, exterior mirrors- dimmable on driver side- power folding- adjustable- heated, Electronic immobilizer, 12-volt socket in luggage boot, Without heat accumulator/auxiliary heater, Freely programmable instrument cluster Basic, Tire pressure monitoring system, Vehicle class differentiation -655-, Start-stop system with regenerative braking, Without protective film for scuff plate, Spectacle storage compartment/bracket, Manually adjustable lumbar support in front seats, Without navigation device, Decorative inserts, Crew Protect Assist, Rear and front parking sensors, Without lane change assist, Without second battery, Alternator 140 A, Without light control, LED headlamps, Separate daytime running light with automatic headlight control and manual Coming and Leaving Home feature, Rear window wiper and washer system with intermittent control, Windshield wiper intermittent control with light/rain sensor, Key for locking system with remote control, Headlight range control, 8 speakers (passive), Adaptive cruise control (for DSG) with Speedlimiter, LED rear combination lamp- dynamic turn signal- special styling, Front fog lamp and cornering lamp, Washer fluid level indicator, Without headlamp washer system, Single-tone horn, Antenna for FM reception only- diversity, Not hot country, Climatronic with impact pressure control- CFC-free, Without additional malfunction display, Non-smoker's package, Without auxiliary heater/parking heater, Visual and acoustic seat belt reminder- electric contact, Without heated washer nozzles, Wired & Wireless Smart Link+, Bluetooth, Equipment options subset for Denmark

**PICTURES**



**Picture viewer:** <https://fm.bilsalg.dk/business/picturebrowser?t=full&guid=23ce5233-4e91-41c5-892a-a41f8e16a2c9&carid=24774322>

### OVERVIEW OF DAMAGES AND SHORTAGES

No damages or shortages

### ELECTRICAL AND MECHANICAL CONDITION

N° LOCATION	TYPE	NOTES
1	Is the car drivable	Yes