

VEHICLE DESCRIPTION - Cupra Formentor 2.0 TSI 333 HK 4x4 CUV DSG7 2.0 TSI VZ



First registration date:
5/2025

VIN:
VSSZZZKM5SR084346

Colour:
null Metallic Normal gloss

Mileage (km):
17.435

Gear:
Automatic (7 Gears)

Fuel type:
Gasoline

Body type:
SUV

Number of doors:
5

Drive type:
4WD

Model year:
2024-2024

Engine power:
245 kW

Number of seats:
5

Engine size (cc):
1984

Interior:

VEHICLE DETAILS

Number of keys:
2

Number of license plates:
2

Registration certificate:
Part 1 & 2 present

Service documentation:
Yes

Inspection date:
01-06-2026

Last service (year/month):

Mileage (km) at last service:

SUMMARY OF THE VEHICLE'S CONDITION

Is the car in a driveable condition:
Yes

Legal tire tread (minimum 1.6 mm):
Yes

WHEELS

TYPE	SEASON	BRAND	POSITION	RIM	SIZE	TREAD
Fitted	Summer tires		Front Left	Alloy rim	19"	4 mm
Fitted	Summer tires		Rear Right	Alloy rim	19"	4 mm
Fitted	Summer tires		Rear Left	Alloy rim	19"	4 mm
Fitted	Summer tires		Front Right	Alloy rim	19"	4 mm

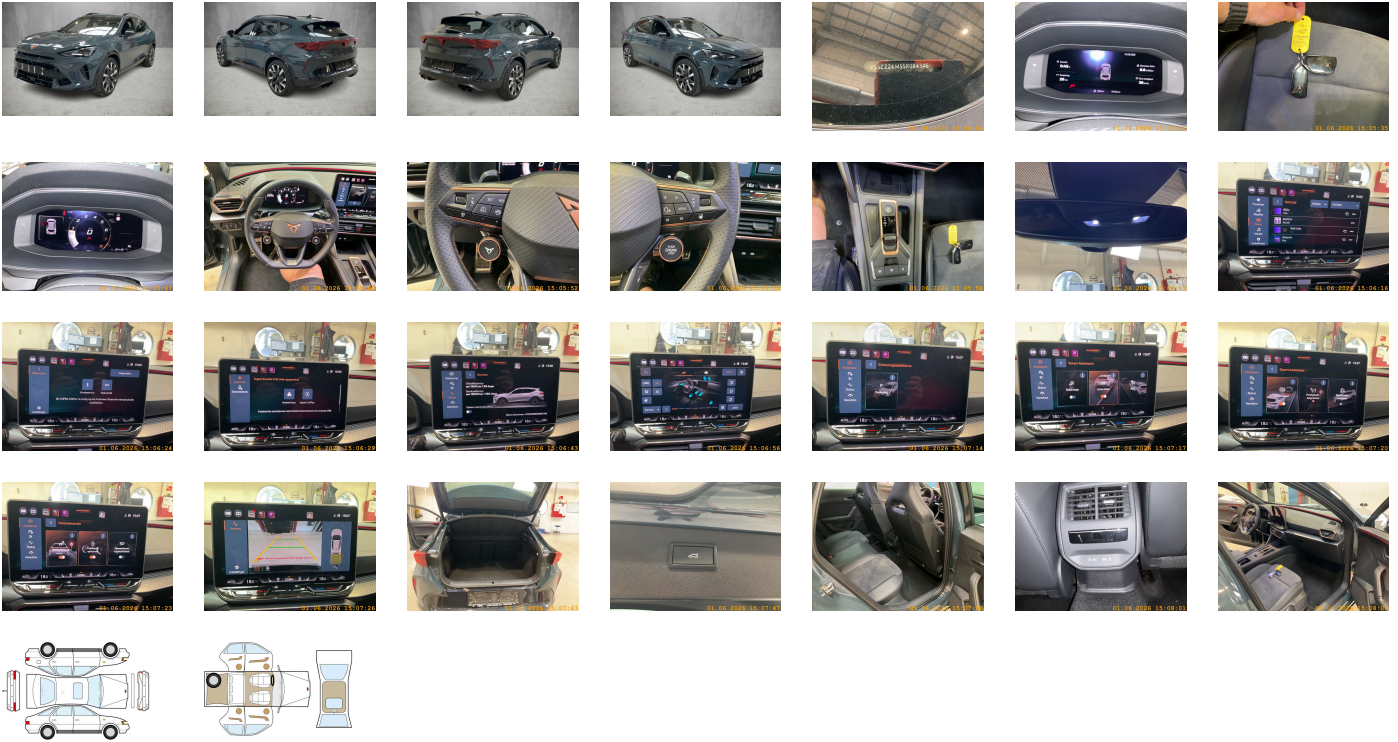
Legal tire tread (minimum 1.6 mm):

Yes

ACCESSORIES

With emergency steering support with turn assist, Without heat accumulator/auxiliary heater, High-beam control, Front fog lamps, Separate daytime running light with automatic headlight control and automat. Coming and Leaving Home feature, Initial standard fuel filling, Side airbag in front and rear- with curtain airbag and interaction airbag in front, Luggage compartment trim- with storage compartments, Standard electronic engine sound, Rear exhaust tailpipe (standard), Sports equipment CUPRA Formentor VZ, Without customized installation, 230-V inverter and outlet for Europe, Rear floor panel module- type 1, No special edition, Without headlamp washer system- with washer fluid level indicator, Interior ambient lighting- type 2, With welcome light (mirror), Disc brakes in front, Navigation system preparation (Baseline), Service indicator 30 000 km or 2 years (variable), Brake control system for vehicles without electric drive (ESC and electromechanical brake booster), Preparation for alcohol interlock, Heat insulating windshield, Regional code " ECE " for radio, Alternator 140 A, Speed-sensitive power steering (Servotronic) w/ limited steering lift mechanism), Vehicle class differentiation -5FF-, Standard climatic zones, Exterior mirrors: convex on driver side- convex on front passenger side, Without roof insert (standard roof), Comfort telephony: wireless charging (fast charge) and external antenna connection, Single-tone horn, Without extended safety system, Non-smoker's package, Tool kit, 4-cylinder SI engine 2.0 l/245 kW FSI- base engine is T3W/T32, Scuff plates in door apertures (illuminated), Weight range 1 installation control only- no requirement forecast, Chrome package, With dynamic road sign display, Dynamic headlight range control (self-adjusting while driving), Without surface protection- with additional transport protection measures, Unsplit rear seat bench- split folding backrest- with center armrest, Decorative inserts for console, Seat trim covers in fabric, External- USB type C data socket(s) and charging socket(s), Without additional front underbody guard, Without preparation for VTS (vehicle tracking system), Without Car2X, Without mode 3 charging cable, Without special body measures, In-plant control of self-collection, Without vehicle inlet, Center armrest in front, Sports seats in front, Seat heater for front seats separately controlled, Basic equipment variant, Rear shock absorption for sports version, Without first aid kit and warning triangle, Park distance control in front and rear, Installation differentiation for transmission DQ381 -- vehicle components --, Not hot country, Without heated washer nozzles, With multifunction camera, Power windows with comfort operation and circuit breaker, Standard rear seat release, Variable luggage/load compartment floor, Without backrest release for front seats, Front stabilizer bar, Without locking and starting systems, Power-adjustable lumbar support for left front seat, Black Exterior Brightware, Disc brakes in rear, Forward collision warning with warning and braking reaction to vehicles- pedestrians and cyclists, Wheelbase, Emblems, LED headlamps with lens, Left-hand drive, Vehicles with special upgrade measures, Power seat adjustment with memory feature for left seat- right seat manually height-adjustable, Without lane change assist, Antenna for FM reception only- diversity, Suspension range 13 installation control only- no requirement forecast, Online service- with OCU- with head unit coding- without engine immobilizer interconnection, Unsplit molded headliner, Without alternative drive system, Exterior mirror housings painted, Rear stabilizer bar, Two reading lights in front- two in rear, Speakers in front and rear, Climatronic (3-zone) with air conditioning control panel in rear, Trailer hitch preparation, Without auxiliary heater/parking heater, Without additional tires, Keyless locking and starting system Keyless Advanced without SAFELOCK, Pedal cluster, Activated carbon canister (Evaporative Emission Control System (EVAP)), Child seat anchors f. child seat system i-Size- 2x top tether and child seat anchors in front on front passenger side, 3-point seat belts- front, Decorative inserts, Advanced driver attention & drowsiness monitor, Shock absorption in front, Side windows in heat-insulating glass- from B-pillar and rear window dark tinted, Alloy wheels 8j x 19, Tires 245/40 R19 94W, Adaptive cruise control, Driving on the right, With rear view camera system (type 2), Without floor mats, Without charging cable, Breakaway interior rearview mirror- auto-dimming, Freely programmable instrument cluster Medium, UWB-capable country and carrier frequency- 433.92 to 434.42 MHz, Without seat ventilation/massage seat, MPV Formentor, Anti-theft alarm system- interior monitoring- backup horn- and towing protection, Head restraint for front seat, Without license plate carrier, Special identification label for EC for M1 passenger vehicles, Without socket, Rear fog lamp, With predictive speed limiter, 3-point seat belts- outer rear with ECE label, Exterior mirrors with memory feature- power-folding/adjustable- separately heated, Digital radio reception, Drawer under right front seat, Luggage pockets on backrest, Without gearshift knob/handle, Black roof rails, Antenna amplifier type 1, Adaptive chassis control with continuous operation, 7-speed automatic transmission- four- wheel drive A7A, Infotainment system with scalable module options (Optionsinfotainment- MIB3 model update) version 2, Supersports steering wheel with tiptronic- heated, Rear window wiper and washer system with intermittent control, Tire pressure monitoring system, Lane keeping system, Instrument cluster- km/h speedometer, Without delivery equipment, Breakdown kit, Without electric motor (hybrid), Standard battery/alternator capacity, Sensor-controlled luggage compartment opener, Without fire extinguisher, Type approval country Denmark, 3-point seat belt for center rear seat, Operating permit- alteration, Without head-up display, Four-wheel drive, Type sign and company logo, Wired & Wireless App-Connect, Airbag on driver and front passenger side- knee airbag on driver/front pass. side- with front pass. airbag deactivat., Three rear head restraints, Without partition, Refrigerant R1234yf, Part set without country-specific prescriptive standard, Control of series production, 4-link rear suspension, No special purpose vehicle- standard equipment, With UN-ECE cybersecurity & software update, 4-cylinder SI engine 2.0 l unit 06Q.C 888evo4, LongLife Service Regime, Fuel system f. fuel-injected SI engine- injection system without fuel return- most powerful engine variant, Visual and acoustic seat belt reminder- electric contact in front and rear, Windshield wiper intermittent control with light/rain sensor, Start-stop system with regenerative braking, Standard wheel bolts, Without nameplate set (without model designation), Manual in Danish, Tires without specification of tire brand, Sun visors with mirror- illuminated- with airbag label on sun visor and B-pillar, Private emergency call system, Standard manufacturing sequence, Electronic differential lock XDS- dynamic traction support, Emission standard- WLTP3 M1- N1-III/EU6EB, LED rear combination lamp- dynamic turn signal, Battery 420 A (70 Ah), Without second battery, Door and side trim panel, Without special specifications, Sports bumpers, Voice control, Parking brake, Equipment options subset for Denmark

PICTURES



Picture viewer: <https://fm.bilsalg.dk/business/picturebrowser?t=full&guid=2779a2ba-ee21-47f6-8c41-06b7c713a522&carid=24774277>

OVERVIEW OF DAMAGES AND SHORTAGES

No damages or shortages

ELECTRICAL AND MECHANICAL CONDITION

N°	LOCATION	TYPE	NOTES
1	Is the car drivable	Yes	