

VEHICLE DESCRIPTION - VW T-ROC R Line Edition 1.5 TSI



First registration date:
5/2025

VIN:
WVGZZA18SV117190

Colour:
Black Metallic Normal gloss

Mileage (km):
16.542

Gear:
Automatic (7 Gears)

Fuel type:
Gasoline

Body type:
SUV

Number of doors:
5

Drive type:
FWD

Model year:
2021-2025

Engine power:
110 kW

Number of seats:
5

Engine size (cc):
1498

Interior:
Grey Partial leatherette

VEHICLE DETAILS

Number of keys:
2

Number of license plates:
2

Registration certificate:
Part 1 present

Service documentation:
No

Inspection date:
08-06-2026

Last service (year/month):


Mileage (km) at last service:

SUMMARY OF THE VEHICLE'S CONDITION

Is the car in a driveable condition:
Yes

Legal tire tread (minimum 1.6 mm):
Yes

WHEELS

 TYPE	SEASON	BRAND	POSITION	RIM	SIZE	TREAD
Fitted	Summer tires		Rear Left	Alloy rim	18"	7 mm
Fitted	Summer tires		Front Right	Alloy rim	18"	6 mm
Fitted	Summer tires		Front Left	Alloy rim	18"	6 mm
Fitted	Summer tires		Rear Right	Alloy rim	18"	7 mm

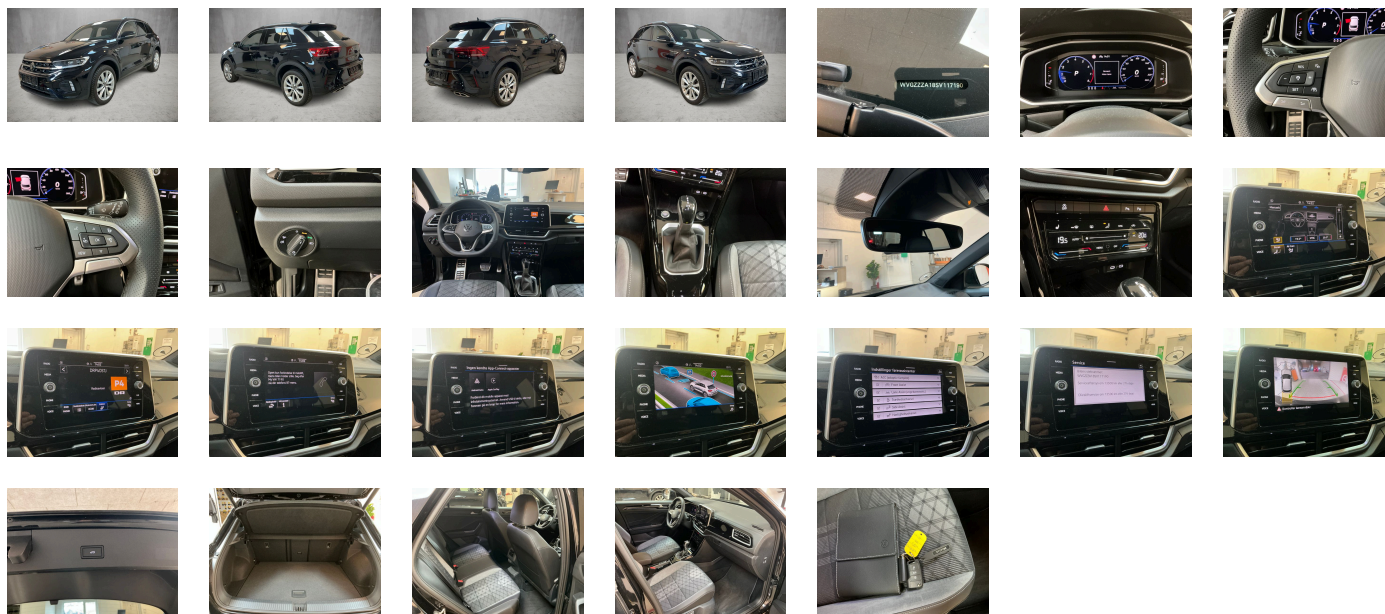
Legal tire tread (minimum 1.6 mm):

Yes

ACCESSORIES

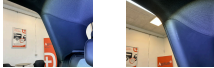


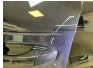

Power windows, Lumbar supports in front, Gearshift knob in leather, Without fire extinguisher, LED Plus headlamps with LED separate daytime running light, Rear shock absorption- chassis with increased ride height, Operating permit- alteration, Luggage compartment floor adjustable in 2 heights- for flat cargo area, 7-speed automatic transmission or dual-clutch transmission DSG- note: PR family EDF, Autonomous Emergency Braking Front Assist (for Adaptive Cruise Control ACC up to 210 km/h), Without vehicle inlet, Electromechanical speed-sensitive power steering, Without additional front underbody guard, Front scuff plates with "R-Line" logo, Auto-dimming interior rearview mirror, Dark Red LED rear combination lamps, Inserts of front and outer rear seats in fabric "R-Line"- inner sides of bolsters in ArtVelours microfleece, Part set without country-specific prescriptive standard, Lane change system Side Assist, Carrier frequency 433.92 MHz-434.42 Mhz, Refrigerant R1234yf, Elimination of nameplate for engine designation on luggage compartment lid, Without heat accumulator/auxiliary heater, Weight range 4 installation control only- no requirement forecast, Driving on the right, Suspension range 03 installation control only- no requirement forecast, Center armrest in front, High-beam control Light Assist, Carpet mats in front and rear, 2 USB-C ports in the front- 2 USB-C charging sockets on the center console in rear- charging capacity up to 45 W, Special edition 2024/2025 for EU Life forces: PJC-4KF-KA1-4I3/4F2 R-Line forces: PJH-4KF-KA1-4I3/4F2-PXB, Adaptive Cruise Control ACC stop & go incl. speed limiter, Digital radio reception DAB+, Curtain airbag system for front and rear passengers incl. side airbags in front, Wheel locks with extended theft protection, Battery 380 A (59 Ah) EFB+, Standard paint coating, Warning signal and warning lamp for front and rear seat belts not fastened, Door and side trim panel in foam film- insert in leatherette, Decorative inserts "Lava Stone Black" for dashboard- center console and front door trim panels, Tires without specification of tire brand, Without preparation for two-way radio installation, Without ECO function, Warning triangle, Without electric motor (hybrid), Easy Open & Close - sensor controlled luggage compartment opening and closing with remote unlocking, Without special body measures, Advanced driver attention & drowsiness monitor, Tire Mobility Set: 12-volt compressor and tire sealant, Without partition, Automatic headlight control with LED separate daytime running light and exit and entry lighting, Light unit in front footwell, Privacy glass for rear side windows and rear window, Retro-reflectors in all doors, Standard climatic zones, Dynamic Road Sign Display, Electronic Stability Control w/ driver steering recommendation- ABS- ASR- EDL- EDTC and trailer stabilization, No special purpose vehicle- standard equipment, Without voice control, 4-cylinder SI engine 1.5 l unit 05E.D, Leather multi-function sports steering wheel- heated- with shift paddles, Driver and front passenger airbag with front passenger airbag deactivation, Pedals in brushed stainless steel, Rear view camera system, Hill start assist, Electromechanical parking brake with Auto Hold function, Chrome elements on rotary light switch- power mirror switch- window regulator switches, vents with chrome frames, Standard roof, Dual-clutch transmission DSG DQ200, Rear window wiper with intermittent control, Infotainment package "Ready 2 Discover", IQ.DRIVE assistance systems package, Without socket, Proactive passenger protection system in combination with Front Assist and Side Assist, Easy Open package without SAFELock, Rear exhaust tailpipe (standard), Completely folding front passenger seat backrest, 3-point seat belts in front with height adjustment and seat belt pretensioners, Electronic immobilizer, Hatchback, LongLife Service Regime, Bumpers in "R-Line" style, Without headlamp washer system, Without alternative drive system, Operating voltage 12 V, Without charging cable, Heated front seats, Without heated washer nozzles, White ambient lighting, Emergency call service-10-year contract duration as of initial delivery-condition: mob. phone network available, Trims for alloy wheels, Exterior mirrors: aspherical on driver side- convex on front passenger side, 3 head restraints in rear, "Grange Hill" 7J x 18- painted in Sterling Silver- R-Line special edition for EU, Front stabilizer bar, App-Connect Wireless for Apple CarPlay and Android Auto, With UNECE CS (R155) without SU (R156), Keyless locking and starting system Keyless Access without SAFELock, Cornering light and poor weather light, Rear floor panel module- type 7, Without additional tires, Body-colored door lower parts, Activated carbon canister (Evaporative Emission Control System (EVAP)), Non-smoker's package: Storage compartment and 12 V outlet in front, Tool kit, Asymmetric split folding rear seat backrest- with center armrest, Standard rear axle, Illuminated vanity mirrors in sun visors, Elimination of cooling system of glove compartment, Basic equipment variant, Online service- with OCU- with head unit coding- without engine immobilizer interconnection, Front-wheel drive, Without Adaptive Chassis Control, Type approval country Denmark, Warning lamp for washer fluid level, Not hot country, Without decals and emblems, Disc brakes in front, 4-cylinder SI engine 1.5 l TSI- 110 kW, Radio, Alternator 140 A, Vehicles with special upgrade measures, Special identification label for EC for M1 passenger vehicles, Rear fog light on one side- back-up light on both sides, Surround lighting with welcome light, Manual in Danish, Silver-anodized roof rails, 4 doors, Service indicator 30 000 km or 2 years (variable), No special edition, LED Plus headlamps, Preparation for subsequent activation: Navigation feature "Discover Media", 3-point seat belts with seat belt pretensioners for the outer rear seats, Initial standard fuel filling, Mobile phone interface with inductive charging feature, Diversity antenna for FM reception, Brake pad wear indicator, Dynamic headlight range control, Without surface protection- with additional transport protection measures, Sports comfort seats in front, Tire Pressure Monitoring System, Winter package, Without exterior ambient lighting, Shock absorption in front, Regional code " ECE " for radio, Multifunction camera, Without rear stabilizer bar, Exterior mirrors- power-adjustable- folding- and heated- with memory feature, Black headliner, Front seats with height adjustment, Vehicle class differentiation -2GA-, 4 alloy wheels "Grange Hill" 7J x 18- painted in Sterling Silver, Drawer under right front seat, No German text in language code de_VW, Multi-color Digital Cockpit Pro- selection of different info profiles possible, Park Assist with Park Distance Control, Without folding table on front seat backrest, Reduced price, Safety-optimized front head restraints, 6 speakers, Tires 215/50 R18 low rolling resistance, Fuel system for fuel-injected SI engine, Disc brakes in rear, Without trailer hitch, Pedestrian Monitoring, Standard battery/alternator capacity, Left-hand drive, Start-stop system with regenerative braking, R-Line, 2 LED reading lights in front and 2 in rear, Instrument cluster with electronic speedometer- odometer and trip odometer- tachometer, Laminated safety glass windshield- heat-insulating, Two-tone horn, Exterior mirror housings in roof color, Air Care Climatronic 2 zone automatic climate control with enhanced air filter with activated carbon, Emission standard- WLTP3 M1- N1-//EU6EB, Preparation for VW Connect and VW Connect Plus, Without auxiliary heater/parking heater, Electronic engine sound, Wheelbase, Travel Assist- Lane Assist and Emergency Assist, ISOFIX anchorage points (mounting fixture for 2 child seats on rear bench seat), Standard manufacturing sequence, Rain sensor, Equipment options subset for Denmark

PICTURES



Picture viewer: <https://fm.bilsalg.dk/business/picturebrowser?t=full&guid=14319828-9c23-4715-8830-4c4a77963c49&carid=24772906>

OVERVIEW OF DAMAGES AND SHORTAGES

N°	LOCATION	TYPE	SEVERITY	INSURANCE	NOTES	DAMAGE GROUP
1	Trunk Cover, R. Cover 	Scratch	C5		Reporting needed	
2	Rear Bumper 	Scratch	C3			
3	Hood 	Stone Chips	C3			
4	L. Front door 	Scratch	C3			
5	R. Rocker Panel, Inside 	Scratch	C3			

Severity explanation:

C0 = No damage / C1 = Simple preparation / C2 = Minor preparation needed / C3 = Can be smart repaired / C4 = Repair/spray paint / C5 = Need replacement

ELECTRICAL AND MECHANICAL CONDITION

N°	LOCATION	TYPE	NOTES
1	Is the car drivable	Yes	