

**VEHICLE DESCRIPTION - Škoda Karoq Selection 1.5 TSI**



**First registration date:**  
5/2025

**VIN:**  
TMBJR7NU6S5061129

**Colour:**  
Black Metallic Normal gloss

**Mileage (km):**  
17.608

**Gear:**  
Automatic (7 Gears)

**Fuel type:**  
Gasoline

**Body type:**  
SUV

**Number of doors:**  
5

**Drive type:**  
FWD

**Model year:**  
2022

**Engine power:**  
110 kW

**Number of seats:**  
5

**Engine size (cc):**  
1498

**Interior:**

**VEHICLE DETAILS**

**Number of keys:**  
2

**Number of license plates:**  
2

**Registration certificate:**  
Part 1 & 2 present

**Service documentation:**  
No

**Inspection date:**  
08-06-2026

**Last service (year/month):**


**Mileage (km) at last service:**

**SUMMARY OF THE VEHICLE'S CONDITION**

**Is the car in a driveable condition:**  
Yes

**Legal tire tread (minimum 1.6 mm):**  
Yes

## WHEELS

 TYPE	SEASON	BRAND	POSITION	RIM	SIZE	TREAD
Fitted	Summer tires		Front Left	Alloy rim	18"	5 mm
Fitted	Summer tires		Rear Right	Alloy rim	18"	5 mm
Fitted	Summer tires		Rear Left	Alloy rim	18"	5 mm
Fitted	Summer tires		Front Right	Alloy rim	18"	5 mm

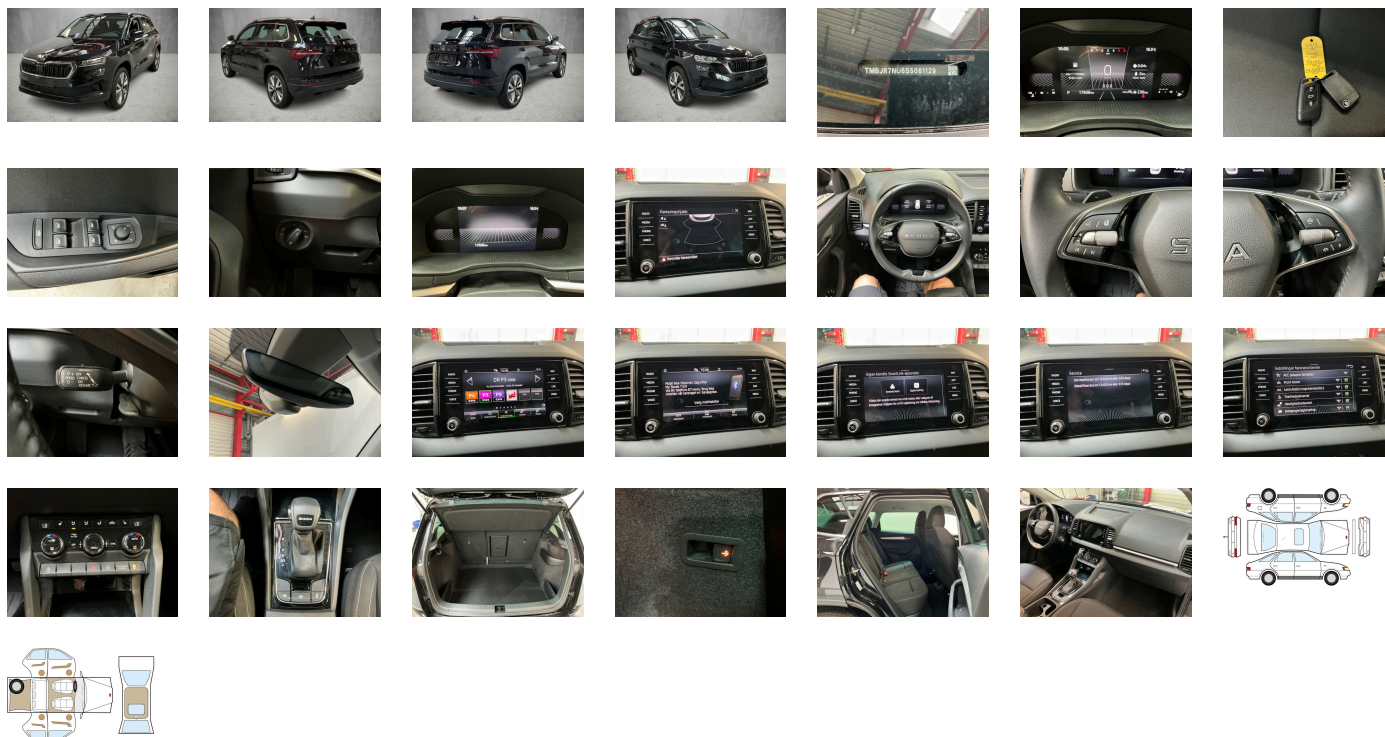
### Legal tire tread (minimum 1.6 mm):

Yes

## ACCESSORIES

Without light control, Without heat accumulator/auxiliary heater, Front fog lights, Vehicle class differentiation -5EP-, Fuel system for fuel-injected SI engine, Initial standard fuel filling, Luggage compartment floor covering in flat needle-punched nonwoven, Standard electronic engine sound, Radio Bolero, Comfort equipment, Operating voltage 12 V, Curtain airbags and side airbags front, Radiator grille, Rear exhaust tailpipe (standard), Without add. lights (interior lighting), Headlamp washer system, Without interior light in footwell, Heat-reflecting windshield, Without storage compartments in trunk, No special edition, Without bracket, Rear floor panel module- type 7, Glasses storage compartment, Rear spoiler, Without supertone system and tone sequence control, Manual child safety lock, Service indicator 30 000 km or 2 years ( variable ), Front head restraints, Disc brakes in front, Climatronic with impact pressure control- CFC-free, Electronic stability control (ESC), Regional code " ECE " for radio, Alternator 140 A, Standard climatic zones, Without additional noise suppression measures for passenger compartment, Without roof insert (standard roof), Without extended safety system, Non-smoker's package, Two-tone horn, Tool kit, Right exterior mirror- convex, Mobile phone interface, Headlight range control, Chrome package, Traffic sign recognition, Without tie down straps/net/pocket, Unsplit rear seat bench- split folding backrest- with center armrest, Adapter, Alloy wheels "PROCYON" 7J x 18" - 4 pcs, Extended and proactive pedestrian protection, Without child seat anchora in front (ISOFIX), "KESSY FULL" without SAFE system, Weight range 7 installation control only- no requirement forecast, Transport protection film with additional transport protection measures, External- USB type C- only data socket(s), Without additional front underbody guard, Standard seats in front, 4 doors, Without special body measures, Without vehicle inlet, Front armrest "JUMBO BOX", Heated front seats, Basic equipment variant, Without load-through hatch, Left exterior mirror- convex, Without luggage/load compartment floor, Park distance control system (parking sensors rear), Key for locking system with remote control, Not hot country, Front stabilizer bar, Standard air cleaner, Without heated washer nozzles, With multifunction camera, Power windows with comfort operation and circuit breaker, Wheel arches, Disc brakes in rear, Without mud flap, Without backrest release for front seats, Driver and passenger seat with lumbar support, Design Selection LOFT Upholstery in fabric, Bright decorative trims, Mechanical rear seat release, Wheelbase, Without decorative films/emblems, Carrier frequency 433.92 MHz-434.42 Mhz, LED headlamps, Additional retro-reflectors (door area), Rear shock absorption- chassis with increased ride height, Left-hand drive, Infotainment Bolero/Amundsen/Columbus (MIB3), Suspension range 10 installation control only- no requirement forecast, Without lane change assist, Without rear stabilizer bar, Antenna for FM reception only- diversity, Remote Access / Remote Access + Online Infotainment, Tires 215/50 R18 92W, Fuel filler cap, Additional 4 loudspeakers rear, Without folding table on front seat backrest, Brake pad wear indicator, Without alternative drive system, Reading light in front, Exterior mirror housings and various add-on parts in body color, Trailer hitch mechanically swiveling and power-detachable, Without auxiliary heater/parking heater, 2 spoke multi-function leather steering wheel with heating and with DSG paddles, Separate daytime running light with automatic headlight control and manual Coming and Leaving Home feature, Standard pedal cluster, Activated carbon canister (Evaporative Emission Control System (EVAP)), Shock absorption in front, 4-cylinder SI engine 1.5 l/110 kW TSI base engine is TJ7/N09/T9F/T57/T0D, Advanced driver attention & drowsiness monitor, "SUNSET", 3-point seat belts in front- with tensioner and height adjustment, Speed-related variable steering assist (Servotronic), Tow bar swiveling- el. unlockable and with adaptor, Electronic immobilizer, Without "drive select", Folding grab handles- multi-piece, Without camera systems/accident sensors, Adaptive cruise control (with "follow-to-stop") and speed limiter, Driving on the right, Without floor mats, Inside rear view mirror automatically dimming, Freely programmable instrument cluster Basic, Storage compartment package 3, MPV, Special identification label for EC for M1 passenger vehicles, Child seat anchors for child seat system ISOFIX, Rear fog lamp, 12-volt socket in luggage boot, Exterior mirrors- auto-dimming- power-folding/adjustable/heated, Rear axle weight- type 1, 3-point seat belts- outer rear with ECE label, Without ECO function, DAB - Digital radio reception, Bright roof rails, Aero hubcaps black, Gearshift knob/handle in leather, 7-speed automatic transmission, Rear window wiper and washer system with intermittent control, Tyre pressure monitoring, Lane Assist (without HOD), Instrument cluster- km/h speedometer, Without delivery equipment, Tailgate/trunk lid release from inside (electrically), Breakdown kit, Without electric motor (hybrid), Standard battery/alternator capacity, Type approval country Denmark, Front-wheel drive, "SMART LINK" (wired and wireless), Without emblem package, Driver knee airbag, 3rd rear headrest, Without partition, Refrigerant R1234yf, Installation differentiation for transmission DQ200 -- vehicle components --, Curb weight range 1, Standard rear axle, Part set without country-specific prescriptive standard, 4-cylinder SI engine 1.5 l unit 05E.D, No special purpose vehicle- standard equipment, Hight adjustable driver and passenger seat, LongLife Service Regime, With UNECE CS (R155) without SU (R156), Hill start assist, Sun visors with illuminated vanity mirror on driver and front passenger side, Windshield wiper intermittent control with light/rain sensor, Start-stop system with regenerative braking, Additional exterior noise suppression, Passenger seat-belt warning light (for all passengers), Manual in Danish, Nameplate set in basic style, Operating permit- alteration, Decorative inserts, Tires without specification of tire brand, Standard wheel bolts, Emergency call system eCall+, Standard bumpers, Standard manufacturing sequence, Door and side trim panel, Emission standard- WLTP3 M1- N1-I//EU6EB, Battery 420 A (70 Ah), Without additional malfunction display, Washer fluid level indicator, LED rear combination lamp- variable lighting functions- special styling, Remote Access 3 years, Standard paint coating, Voice control, Door sills (front), Parking brake, Forward collision warning incl. autonomous emergency braking- for adaptive cruise control "high", Equipment options subset for Denmark

**PICTURES**



**Picture viewer:** <https://fm.bilsalg.dk/business/picturebrowser?t=full&guid=96eb8579-64fa-4f21-9128-60e25aa91422&carid=24772767>

## OVERVIEW OF DAMAGES AND SHORTAGES

No damages or shortages

## ELECTRICAL AND MECHANICAL CONDITION

N° LOCATION	TYPE	NOTES
1	Is the car drivable	Yes