

**VEHICLE DESCRIPTION - VW T-ROC R Line Edition 1.5 TSI**



**First registration date:**  
5/2025

**VIN:**  
WVGZZA13SV120997

**Colour:**  
Black Metallic Normal gloss

**Mileage (km):**  
29.706

**Gear:**  
Automatic (7 Gears)

**Fuel type:**  
Gasoline

**Body type:**  
SUV

**Number of doors:**  
5

**Drive type:**  
FWD

**Model year:**  
2021-2025

**Engine power:**  
110 kW

**Number of seats:**  
5

**Engine size (cc):**  
1498

**Interior:**

**VEHICLE DETAILS**

**Number of keys:**  
2

**Number of license plates:**  
2

**Registration certificate:**  
Part 1 present

**Service documentation:**  
Yes

**Inspection date:**  
01-06-2026

**Last service (year/month):**

**Mileage (km) at last service:**

**SUMMARY OF THE VEHICLE'S CONDITION**

**Is the car in a driveable condition:**  
Yes

**Legal tire tread (minimum 1.6 mm):**  
Yes

## WHEELS

 TYPE	SEASON	BRAND	POSITION	RIM	SIZE	TREAD
Fitted	Summer tires		Front Left	Alloy rim	18"	5 mm
Fitted	Summer tires		Rear Right	Alloy rim	18"	5 mm
Fitted	Summer tires		Rear Left	Alloy rim	18"	5 mm
Fitted	Summer tires		Front Right	Alloy rim	18"	5 mm

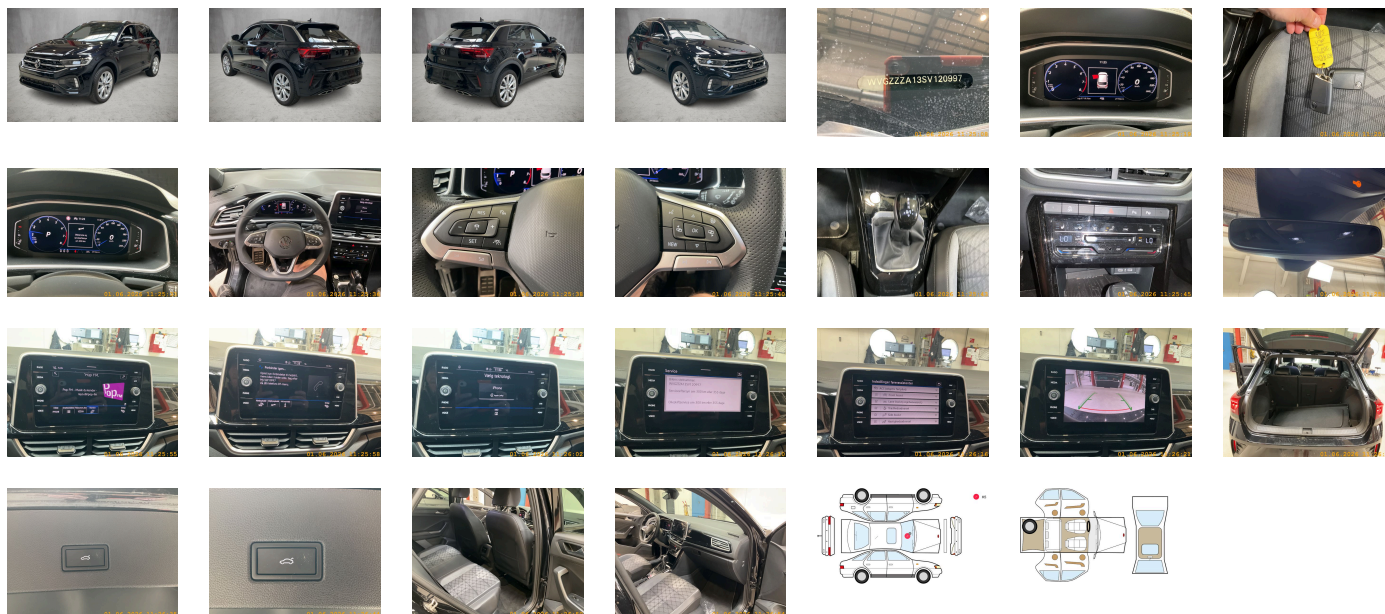
**Legal tire tread (minimum 1.6 mm):**

Yes

## ACCESSORIES

Bumpers in "R-Line" style, Easy Open & Close - sensor controlled luggage compartment opening and closing with remote unlocking, High-beam control Light Assist, Without heat accumulator/auxiliary heater, Front scuff plates with "R-Line" logo, Fuel system for fuel-injected SI engine, Automatic headlight control with LED separate daytime running light and exit and entry lighting, Initial standard fuel filling, Electronic engine sound, Preparation for subsequent activation: Navigation feature "Discover Media", Cornering light and poor weather light, Operating voltage 12 V, Curtain airbag system for front and rear passengers incl. side airbags in front, Without headlamp washer system, Rear exhaust tailpipe (standard), White ambient lighting, Laminated safety glass windshield- heat-insulating, Light unit in front footwell, No special edition, Surround lighting with welcome light, Rear floor panel module- type 7, Service indicator 30 000 km or 2 years (variable), Safety-optimized front head restraints, Disc brakes in front, Infotainment package "Ready 2 Discover", Air Care Climatronic 2 zone automatic climate control with enhanced air filter with activated carbon, Electronic Stability Control w/ driver steering recommendation- ABS- ASR- EDL- EDTC and trailer stabilization, Regional code " ECE " for radio, Alternator 140 A, Standard climatic zones, Exterior mirrors: aspherical on driver side- convex on front passenger side, Standard roof, Two-tone horn, Non-smoker's package: Storage compartment and 12-V outlet in front, R-Line, Tool kit, Proactive passenger protection system in combination with Front Assist and Side Assist, Mobile phone interface with inductive charging feature, Multi-color Digital Cockpit Pro- selection of different info profiles possible, Chrome elements on rotary light switch- power mirror switch- window regulator switches, vents with chrome frames, Dynamic Road Sign Display, Without surface protection- with additional transport protection measures, Dynamic headlight range control, Asymmetric split folding rear seat backrest- with center armrest, LED Plus headlamps, Weight range 4 installation control only- no requirement forecast, Pedestrian Monitoring, Keyless locking and starting system Keyless Access without SAFELock, Without additional front underbody guard, 2 USB-C ports in the front- 2 USB-C charging sockets on the center console in rear- charging capacity up to 45 W, 4 doors, Without special body measures, Without vehicle inlet, Center armrest in front, Heated front seats, Basic equipment variant, Suspension range 03 installation control only- no requirement forecast, Warning triangle, Winter package, Not hot country, Special edition 2024/2025 for EU Life forces: PJC-4KF-KA1-4I3/4F2 R-Line forces: PJH-4KF-KA1-4I3/4F2-PXB, Park Assist with Park Distance Control, Front stabilizer bar, Without heated washer nozzles, Multifunction camera, Power windows, Disc brakes in rear, IQ.DRIVE assistance systems package, Luggage compartment floor adjustable in 2 heights- for flat cargo area, Lumbar supports in front, Without trailer hitch, Completely folding front passenger seat backrest, Wheelbase, Reduced price, Battery 380 A (59 Ah) EFB+, Carrier frequency 433.92 MHz-434.42 Mhz, LED Plus headlamps with LED separate daytime running light, Without preparation for two-way radio installation, Retro-reflectors in all doors, Rear shock absorption- chassis with increased ride height, Left-hand drive, Vehicles with special upgrade measures, Radio, Body-colored door lower parts, Without rear stabilizer bar, Diversity antenna for FM reception, Online service- with OCU- with head unit coding- without engine immobilizer interconnection, Lane change system Side Assist, 6 speakers, Without folding table on front seat backrest, Brake pad wear indicator, Without alternative drive system, Exterior mirror housings in roof color, 2 LED reading lights in front and 2 in rear, Without auxiliary heater/parking heater, Without additional tires, Black headliner, Without exterior ambient lighting, Pedals in brushed stainless steel, Activated carbon canister (Evaporative Emission Control System (EVAP)), Without decals and emblems, Shock absorption in front, 4-cylinder SI engine 1.5 l TSI- 110 kW, Advanced driver attention & drowsiness monitor, Privacy glass for rear side windows and rear window, 4 alloy wheels "Grange Hill" 7J x 18- painted in Sterling Silver, 3-point seat belts in front with height adjustment and seat belt pretensioners, Electromechanical speed-sensitive power steering, "Grange Hill" 7J x 18- painted in Sterling Silver- R-Line special edition for EU, Electronic immobilizer, Without Adaptive Chassis Control, Rear view camera system, Hatchback, Adaptive Cruise Control ACC stop & go incl. speed limiter, Driving on the right, Without charging cable, Auto-dimming interior rearview mirror, Carpet mats in front and rear, Decorative inserts "Lava Stone Black" for dashboard- center console and front door trim panels, Sports comfort seats in front, Special identification label for EC for M1 passenger vehicles, ISOFIX anchorage points (mounting fixture for 2 child seats on rear bench seat), Without socket, Elimination of cooling system of glove compartment, 3-point seat belts with seat belt pretensioners for the outer rear seats, Without ECO function, Exterior mirrors- power-adjustable- folding- and heated- with memory feature, Trims for alloy wheels, Digital radio reception DAB+, Rear fog light on one side- back-up light on both sides, Silver-anodized roof rails, Drawer under right front seat, Leather multi-function sports steering wheel- heated- with shift paddles, Gearshift knob in leather, 7-speed automatic transmission or dual-clutch transmission DSG- note: PR family EDF, Rear window wiper with intermittent control, Tire Pressure Monitoring System, Instrument cluster with electronic speedometer- odometer and trip odometer- tachometer, Tire Mobility Set: 12-volt compressor and tire sealant, Travel Assist- Lane Assist and Emergency Assist, Without electric motor (hybrid), Standard battery/alternator capacity, Driver and front passenger airbag with front passenger airbag deactivation, Without fire extinguisher, Type approval country Denmark, Front-wheel drive, Tires 215/50 R18 low rolling resistance, App-Connect Wireless for Apple CarPlay and Android Auto, 3 head restraints in rear, Without partition, Part set without country-specific prescriptive standard, Dual-clutch transmission DSG DQ200, Refrigerant R1234yf, Standard rear axle, 4-cylinder SI engine 1.5 l unit 05E.D, No special purpose vehicle- standard equipment, Vehicle class differentiation -2GA-, No German text in language code de\_VW, Front seats with height adjustment, LongLife Service Regime, With UNECE CS (R155) without SU (R156), Easy Open package without SAFELock, Rain sensor, Start-stop system with regenerative braking, Warning signal and warning lamp for front and rear seat belts not fastened, Elimination of nameplate for engine designation on luggage compartment lid, Hill start assist, Operating permit- alteration, Manual in Danish, Tires without specification of tire brand, Wheel locks with extended theft protection, Illuminated vanity mirrors in sun visors, Emergency call service-10-year contract duration as of initial delivery- condition: mob. phone network available, Dark Red LED rear combination lamps, Standard manufacturing sequence, Emission standard- WLTP3 M1- N1-I//EU6EB, Door and side trim panel in foam film- insert in leatherette, Warning lamp for washer fluid level, Standard paint coating, Inserts of front and outer rear seats in fabric "R-Line"- inner sides of bolsters in ArtVelours microfleece, Without voice control, Preparation for VW Connect and VW Connect Plus, Electromechanical parking brake with Auto Hold function, Autonomous Emergency Braking Front Assist (for Adaptive Cruise Control ACC up to 210 km/h), Equipment options subset for Denmark

**PICTURES**



**Picture viewer:** <https://fm.bilsalg.dk/business/picturebrowser?t=full&guid=ec02795a-9712-4062-a1b4-45db61a3d6a6&carid=24743617>

## OVERVIEW OF DAMAGES AND SHORTAGES

N°	LOCATION	TYPE	SEVERITY	INSURANCE	NOTES	DAMAGE GROUP
1	Front Windscreen	Stone Chips	C5		Reporting needed	



Severity explanation:

C0 = No damage / C1 = Simple preparation / C2 = Minor preparation needed / C3 = Can be smart repaired / C4 = Repair/spray paint / C5 = Need replacement

## ELECTRICAL AND MECHANICAL CONDITION

N°	LOCATION	TYPE	NOTES
1	Is the car drivable	Yes	