

VEHICLE DESCRIPTION - VW Polo 2.0 TSI GTI



First registration date: 4/2025	VIN: WWWZZAW3SU032490
Colour: Gray Normal gloss	Mileage (km): 8.426
Gear: Automatic (7 Gears)	Fuel type: Gasoline
Body type: Hatchback	Number of doors: 5
Drive type: FWD	Model year: 2021
Engine power: 152 kW	Number of seats: 5
Engine size (cc): 1984	Interior: Dark grey Fabric


VEHICLE DETAILS

Number of keys: 2	Number of license plates: 2	Registration certificate: Part 1 & 2 present	Service documentation: Yes
Inspection date: 30-04-2026	Last service (year/month):	Mileage (km) at last service:	

SUMMARY OF THE VEHICLE'S CONDITION

Is the car in a driveable condition: Yes	Legal tire tread (minimum 1.6 mm): Yes
--	--

WHEELS

 TYPE	SEASON	BRAND	POSITION	RIM	SIZE	TREAD
Fitted	Summer tires		Front Left	Alloy rim	17"	5 mm
Fitted	Summer tires		Rear Right	Alloy rim	17"	5 mm
Fitted	Summer tires		Rear Left	Alloy rim	17"	5 mm
Fitted	Summer tires		Front Right	Alloy rim	17"	5 mm

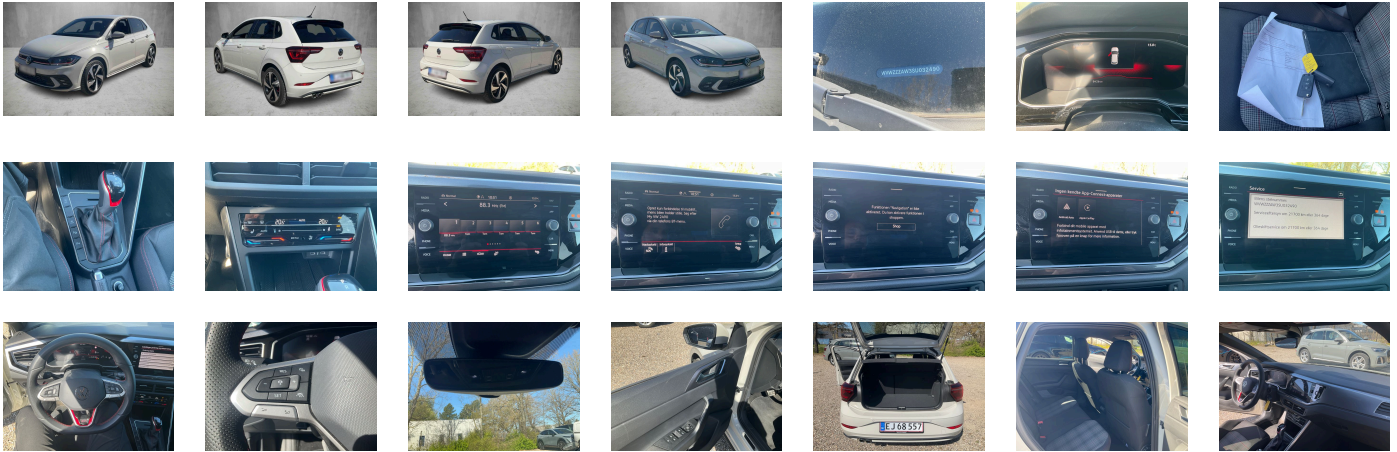
Legal tire tread (minimum 1.6 mm):

Yes

ACCESSORIES

Driving on the right, "Standard Plus" version, GTI, Part set without country-specific prescriptive standard, Type approval country Denmark, Operating permit-alteration, ECO function, Online service- with OCU- with head unit coding- without engine immobilizer interconnection, Advanced driver attention & drowsiness monitor, Regional code " ECE " for radio, No special edition, No special purpose vehicle- standard equipment, Vehicles with special upgrade measures, 7-speed automatic transmission or dual-clutch transmission DSG- note: PR family EDF, Shock absorption in front, Battery 380 A (68 Ah), Without camera systems/accident sensors, Refrigerant R1234yf, Hatchback, Left-hand drive, Suspension range 15 installation control only- no requirement forecast, 4-cylinder SI engine 2.0 l TSI- 152 kW, With UNECE CS (R155) without SU (R156), Standard battery/alternator capacity, Emergency call service-10-year contract duration as of initial delivery- condition: mob. phone network available, Inserts of front seats and outer rear seats in fabric "Scale Paper", Park & Convenience assistance package, IQ.DRIVE assistance systems package, Space- and weight-saving spare wheel- 18-inch, LongLife Service Regime, Without voice control, Service indicator 30 000 km or 2 years (variable), Chrome elements on power mirror and window regulator switches- on front vents on driver and fr. passenger side, Multifunction camera, Storage compartment for Manual under left front seat, Ambient lighting, Dynamic Road Sign Display, Digital radio reception DAB+, Power steering, Premium sports seats in front, Infotainment package "Ready 2 Discover", 4-cylinder SI engine 2.0 l, Illuminated molding between headlamps, Hill start assist, Instrument cluster with electronic speedometer-odometer and trip odometer- tachometer, 2 USB-C ports in the front- 2 USB-C charging sockets on the center console in rear- charging capacity up to 45 W, Pedals in brushed stainless steel, Pedestrian and cyclist monitoring, Front scuff plates in aluminum- with GTI logo, Tires without specification of tire brand, Lights & Vision package, Denmark: DK package Basic forces: WLA-WF1-4KF, Style/GTI: WLB-9AK-4KF, Life/R-Line: WLA-9AK-4KF, Price control for model update 2024 II, Preparation for VW Connect and VW Connect Plus, Front stabilizer bar, 4 doors, Wheelbase, South Africa manufacturing sequence, Dual-clutch transmission DSG DQ381, Without decals and emblems, Without alternative drive system, Nameplate set "GTI", Heavy-duty rear axle, Chromed twin tailpipe- left, Carpet mats in front and rear, Manual in Danish, Weight range 13 installation control only- no requirement forecast, Standard climatic zones, Rear overhang- short, Electronic Stability Control w/ driver steering recommendation- ABS- ASR- EDL and EDTC, Fuel system for fuel-injected SI engine, Without trailer hitch, Special identification label for EC for M1 passenger vehicles, Activated carbon canister (Evaporative Emission Control System (EVAP)), Space- and weight-saving spare wheel, Sports suspension- vehicle body lowered, Disc brakes in rear- red brake calipers, Trims for alloy wheels, Wheel locks with extended theft protection, Without additional front underbody guard, Tool kit and jack, Vehicle class differentiation - 2G0- for build status Europe, Warning triangle, Front-wheel drive, Electronic differential lock XDS, Disc brakes in front- red brake calipers, Initial standard fuel filling, Delivery equipment- water border, Height and longitudinally adjustable steering column, Driving Mode Selection, Bumpers in sports style- air intakes in honeycomb structure- black sill extension, Leather multi-function sports steering wheel with shift paddles, Fresh air intake system with combinationfilter, Without additional tires, ISOFIX anchors for child seats on outer rear bench seats and on front passenger seat- compatible for i-Size, 3-point seat belt for center rear seat, Standard roof, Luggage compartment floor adjustable in 2 heights- for flat cargo area, Non-folding front passenger seat backrest, Front seats with height adjustment, Unsplit rear bench seat- asymmetric split folding backrest, 3-point seat belts in front with height adjustment and seat belt pretensioners, 3 head restraints in rear, Luggage compartment cover, 3-point seat belts with seat belt pretensioners for the outer rear seats, Door and side trim panel, Heated front seats, Laminated safety glass windshield- heat-insulating, Central locking system without SAFELock- with radio remote control and 2 remote control folding keys, Privacy glass for rear side windows and rear window, Auto-dimming interior rearview mirror, Foamed dashboard, Rear floor panel module- type 1, Power windows, Driver and front passenger airbag with front passenger airbag deactivation, Map pockets on the back of each front seat, Emission standard-WLTP3 M1- N1-II/EU6EA, 4 alloy wheels "Milton Keynes" 7.5J x 17- Black- diamond-turned surface, Without special body measures, Carrier frequency 433.92 MHz- 434.42 Mhz, Without surface protection- with additional transport protection measures, Decorative inserts "Deep Iron Gray" for dashboard and front door trim panels, Right exterior mirror- convex, Aspherical exterior mirror on driver side, Illuminated vanity mirrors in sun visors, Safety-optimized front head restraints, Without adhesive film, Curtain airbags in front and rear- side airbags in front- center airbag, Front center armrest- longitudinally adjustable- with storage compartment, Body-colored exterior mirror housings and door handles, Semi-automated driving assistance Travel Assist and lane keeping system Lane Assist, Autonomous Emergency Braking Front Assist (for Adaptive Cruise Control ACC up to 210 km/h), Black headliner, Hand brake lever handle in leather, Gearshift knob in aluminum-leather combination, Light unit in front footwell, Exterior mirrors- power-adjustable- folding and heated- w/ front passenger exterior mirror lowering function, Electronic immobilizer, Without heat accumulator/auxiliary heater, Multi-color Digital Cockpit- selection of different info profiles possible, Tire Pressure Monitoring System, Start-stop system with regenerative braking, Lumbar supports in front, Lane change system Side Assist and Rear Traffic Alert, Preparation for subsequent activation: Navigation feature "Discover Media", Proactive passenger protection system in combination with Front Assist, Park Assist with Park Distance Control, Radio, Installation of SLI battery in rear- without second battery, Alternator 140 A, Advanced high-beam control Dynamic Light Assist, IQ.LIGHT - LED matrix headlamps with LED separate daytime running light, Rear window wiper with intermittent control, Rain sensor, Dynamic headlight range control, 6 speakers, LED interior lights with switch-off delay and dimmer- 2 LED reading lights in front and 2 in rear, Rear fog lamp for driving on the right, Adaptive Cruise Control ACC stop & go incl. speed limiter, LED rear combination lamps with dynamic turn signal, Without front fog lamps, Warning lamp for washer fluid level, Without headlamp washer system, Two-tone horn, Diversity antenna for FM reception, Not hot country, Tires 215/45 ZR 17, Air Care Climatronic 2 zone automatic climate control with enhanced air filterwith activated carbon, Luggage compartment lighting, Automatic headlight control with exit and entry lighting, Non-smoker's package: Storage compartment and 12-V outlet in front, Without auxiliary heater/parking heater, Warning signal and warning light for front and rear seat belts not fastened, Without heated washer nozzles, App-Connect Wireless for Apple CarPlay and Android Auto, Mobile phone interface with inductive charging feature, Equipment options subset for Denmark

PICTURES



Picture viewer: <https://fm.bilsalg.dk/business/picturebrowser?t=full&guid=66c9eb32-0627-4225-b6c8-67368589a345&carid=24711323>

OVERVIEW OF DAMAGES AND SHORTAGES

No damages or shortages

ELECTRICAL AND MECHANICAL CONDITION

N° LOCATION	TYPE	NOTES
1	Is the car drivable	Yes