

VEHICLE DESCRIPTION - Škoda Kamiq Selection 1.0 TSI



First registration date:
5/2025

VIN:
TMBGR9NW0S3093366

Colour:
Silver Metallic Normal gloss

Mileage (km):
24.603

Gear:
Automatic (7 Gears)

Fuel type:
Gasoline

Body type:
SUV

Number of doors:
5

Drive type:
FWD

Model year:
2024

Engine power:
85 kW

Number of seats:
5

Engine size (cc):
999

Interior:
Black Fabric

VEHICLE DETAILS

Number of keys:
2

Number of license plates:
2

Registration certificate:
Part 1 & 2 present

Service documentation:
No

Inspection date:
30-05-2026

Last service (year/month):

Mileage (km) at last service:

SUMMARY OF THE VEHICLE'S CONDITION

Is the car in a driveable condition:
Yes

Legal tire tread (minimum 1.6 mm):
Yes

WHEELS

TYPE	SEASON	BRAND	POSITION	RIM	SIZE	TREAD
Fitted	Winter tires		Front Left	Steel rim	16"	6 mm
Fitted	Winter tires		Rear Right	Steel rim	16"	6 mm
Fitted	Winter tires		Rear Left	Steel rim	16"	6 mm
Fitted	Winter tires		Front Right	Steel rim	16"	6 mm

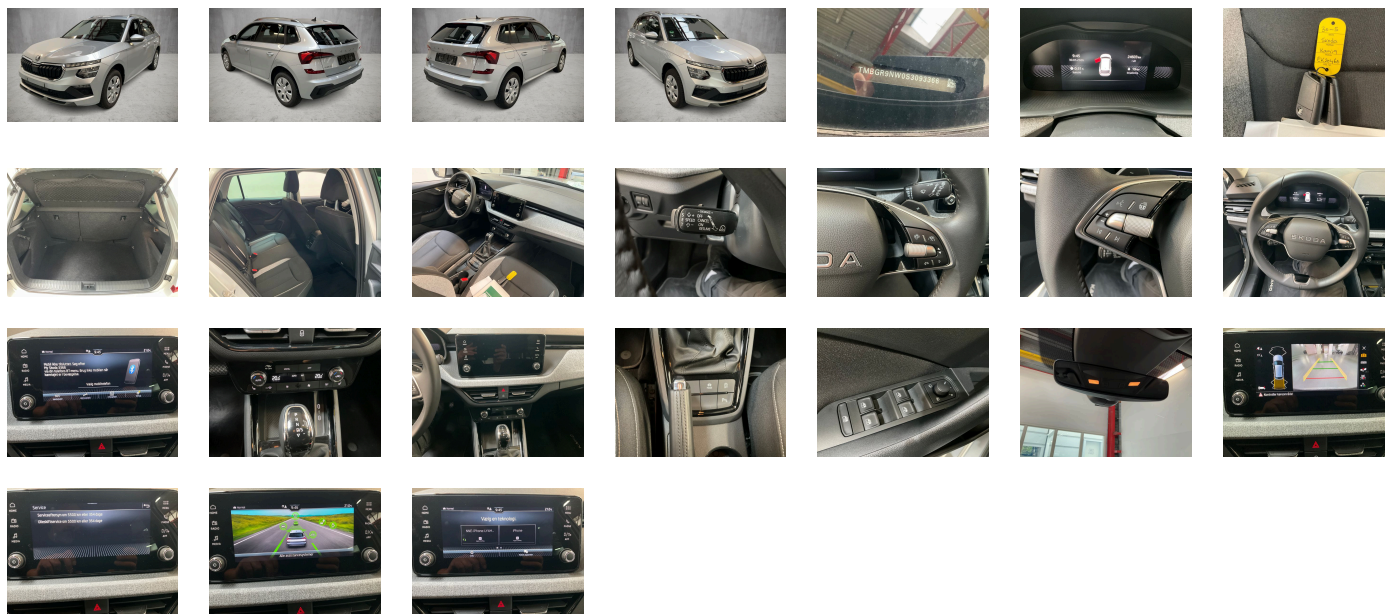
Legal tire tread (minimum 1.6 mm):

Yes

ACCESSORIES




Power windows with comfort operation and circuit breaker, Additional exterior noise suppression, Without navigation device, Manually adjustable lumbar support in front seats, Without delivery equipment, Gearshift knob/handle in leather, Without drawers under front seats, Disc brakes in front (Geomet D), Without fire extinguisher, Without floor mats, With trim panel, Roof rails, Alloy wheels 6j x 16" CORTADERO, "FRONT ASSIST" incl. adaptive cruise control, 7-speed automatic transmission, Shock absorption in front, Additional front underbody guard, Without waste bin, Separate daytime running light with automatic headlight control and manual Coming and Leaving Home feature, exterior mirrors- dimmable on driver side- power folding- adjustable- heated, Axial and vertical adjustable steering column, Breakaway interior rearview mirror- auto-dimming, Rear overhang- short, Without two-sided floor surface, Tailgate without electrical opening, Part set without country-specific prescriptive standard, Carrier frequency 433.92 MHz-434.42 Mhz, Refrigerant R1234yf, Nameplate set in basic style, Operating permit-alteration, Hight-adjustable head restraints for front seats, Extended and proactive pedestrian and cyclist protection, Curb weight range 1, Drum brakes in rear, Weight range 13 installation control only- no requirement forecast, Glove compartment door with light, Without heat accumulator/auxiliary heater, Driving on the right, Without add. lights (interior lighting), Center armrest in front "Jumbo Box", External- USB type C data socket(s) and charging socket(s) with increased charging capacity, Rear floor panel module- type 1, DAB - Digital radio reception, Standard paint coating, Seat trim covers in fabric, Radiator grille with chrome molding, Tires without specification of tire brand, Adaptive cruise control (for DSG) with Speedlimiter, 8 speakers (passive), Without additional side body covers (stone guard), Advanced driver attention & drowsiness monitor, Breakdown kit, Without partition, 3-cylinder SI engine 1.0 I/85 kW TSI base engine is TJ4/T0R/T26/T0M/T1D/T6A, Sunset, Standard climatic zones, With dynamic road sign display, Electronic stability control (ESC), LED rear combination lamp- dynamic turn signal- special styling, No special purpose vehicle- standard equipment, Without voice control, Interiorbars and air vents frame Black glossy, Hill hold control, Without roof insert (standard roof), Installation differentiation for transmission DQ200 -- vehicle components --, Rear window wiper and washer system with intermittent control, Without electronic steering column lock, Single-tone horn, 3-point seat belts in front- with tensioner and height adjustment, Sun visors with mirror and airbag label on front passenger side, Driver knee airbag, 3-point seat belt for center rear seat, Electronic immobilizer, Crossover, LongLife Service Regime, Seat heater for front seats separately controlled, Without headlamp washer system, Suspension range 25 installation control only- no requirement forecast, Without alternative drive system, Without additional noise suppression measures for passenger compartment, Without heated washer nozzles, Standard tailgate, Trims for alloy wheels, Without second battery, Without adapter, Without bracket, Entry-level infotainment system radio upgrade (UNECE), With UNECE CS (R155) without SU (R156), Washer fluid level indicator, Front fog lamp and cornering lamp, Wired & Wireless Smart Link+, Lane assist +, Central locking system Keyless Entry without SAFELock, Activated carbon canister (Evaporative Emission Control System (EVAP)), Without storage compartment package/box, Non-smoker's package, Decorative inserts, Unsplit rear seat bench- split folding backrest, Tool kit, Rear axle weight- type 1, Rear and front parking sensors, Without lane change assist, Fresh air intake system with combination filter, Body-colored bumpers, Without decorative films/emblems, Without protective film for scuff plate, Without refrigerator/glove compartment cooling system, Right exterior mirror- convex, Drive Mode Select without Chassis Presets, Basic equipment variant, Visual and acoustic seat belt reminder- electric contact, Fuel filler cap, Front-wheel drive, Type approval country Denmark, Not hot country, Antifreeze up to -25 degree Celsius tolerance up to -30 degree C, Standard rear axle, Tires 205/60 R16 92V, Without protective side molding, Crew Protect Assist, Center console, Side airbag in front and rear with curtain airbag, Emergency call system eCall+, Three rear head restraints, Freely programmable instrument cluster Basic, Luggage net, Spectacle storage compartment/bracket, ECO function, Alternator 140 A, Leather-wrapped multi-function steering wheel- heated- with tiptronic, LED headlamps, Heat-reflecting windshield, Special identification label for EC for M1 passenger vehicles, Front stabilizer bar, Child seat anchors f. child seat system i-Size- 2x top tether and child seat anchors in front on front passenger side, Manual in Danish, 4 doors, Fuel system for fuel-injected SI engine (tropicalized), 12-volt socket in luggage boot, Service indicator 30 000 km or 2 years (variable), No special edition, Without backrest release for front seats, Remote Access 3 years, Grey ceiling, 3-point seat belts- outer rear with ECE label, Initial standard fuel filling, With rear view camera system (type 2), Antenna for FM reception only- diversity, Standard wheel bolts, Transport protection film with additional transport protection measures, Tire pressure monitoring system, Regional code " ECE " for radio, Battery 320 A (49 Ah), With umbrella, Selection, Remote Access / Pro-active service, Without luggage/load compartment floor, Rear shock absorption, Window frame in chrome, Door panels with upholstery, Manual height adjustment for front seats, Net under the luggage compartment cover, Vehicle class differentiation -655-, Without light control, 3-cylinder SI engine 1.0 I unit 05C.B, Without folding table on front seat backrest, Left exterior mirror- convex, Standard Seats, Mounting fixture in luggage compartment, Without trailer hitch, Key for locking system with remote control, "Standard Plus" version, Left-hand drive, Start-stop system with regenerative braking, Instrument cluster- km/h speedometer, Bluetooth, Outside door mirrors and door handles in body color, Climatronic with impact pressure control- CFC-free, Emission standard- WLTP3 M1- N1-I//EU6EB, Without additional malfunction display, Power steering, With multifunction camera, Without auxiliary heater/parking heater, Standard pedal cluster, Headlight range control, Wheelbase, Standard manufacturing sequence, Windshield wiper intermittent control with light/rain sensor, N/A

PICTURES



Picture viewer: <https://fm.bilsalg.dk/business/picturebrowser?t=full&guid=2edbb754-7936-4651-b1a0-15ac4f087b14&carid=24711273>

OVERVIEW OF DAMAGES AND SHORTAGES

N°	LOCATION	TYPE	SEVERITY	INSURANCE	NOTES	DAMAGE GROUP
1	L. Rear Door, Handle	Scratch	C4		Reporting needed	Group 1
						
2	Rear Bumper	Scratch	C4		Reporting needed	Group 1
						
3	L. Rear Quarter Panel	Dent	C4		Reporting needed	Group 1
						

Severity explanation:

C0 = No damage / C1 = Simple preparation / C2 = Minor preparation needed / C3 = Can be smart repaired / C4 = Repair/spray paint / C5 = Need replacement

ELECTRICAL AND MECHANICAL CONDITION

N°	LOCATION	TYPE	NOTES
1	Is the car drivable	Yes	