

**VEHICLE DESCRIPTION - VW Polo 2.0 TSI GTI**



<b>First registration date:</b> 5/2025	<b>VIN:</b> WWWZZAW5SU043894
<b>Colour:</b> Beige Normal gloss	<b>Mileage (km):</b> 27.583
<b>Gear:</b> Automatic (7 Gears)	<b>Fuel type:</b> Gasoline
<b>Body type:</b> Hatchback	<b>Number of doors:</b> 5
<b>Drive type:</b> FWD	<b>Model year:</b> 2021
<b>Engine power:</b> 152 kW	<b>Number of seats:</b> 5
<b>Engine size (cc):</b> 1984	<b>Interior:</b> Dark grey Fabric


**VEHICLE DETAILS**

<b>Number of keys:</b> 2	<b>Number of license plates:</b> 2	<b>Registration certificate:</b> Part 1 & 2 present	<b>Service documentation:</b> No
<b>Inspection date:</b> 01-06-2026	<b>Last service (year/month):</b>	<b>Mileage (km) at last service:</b>	

**SUMMARY OF THE VEHICLE'S CONDITION**

<b>Is the car in a driveable condition:</b> Yes	<b>Legal tire tread (minimum 1.6 mm):</b> Yes
--	--

## WHEELS

 TYPE	SEASON	BRAND	POSITION	RIM	SIZE	TREAD
Fitted	Summer tires		Rear Left	Alloy rim	17"	5 mm
Fitted	Summer tires		Front Right	Alloy rim	17"	6 mm
Fitted	Summer tires		Front Left	Alloy rim	17"	6 mm
Fitted	Summer tires		Rear Right	Alloy rim	17"	5 mm

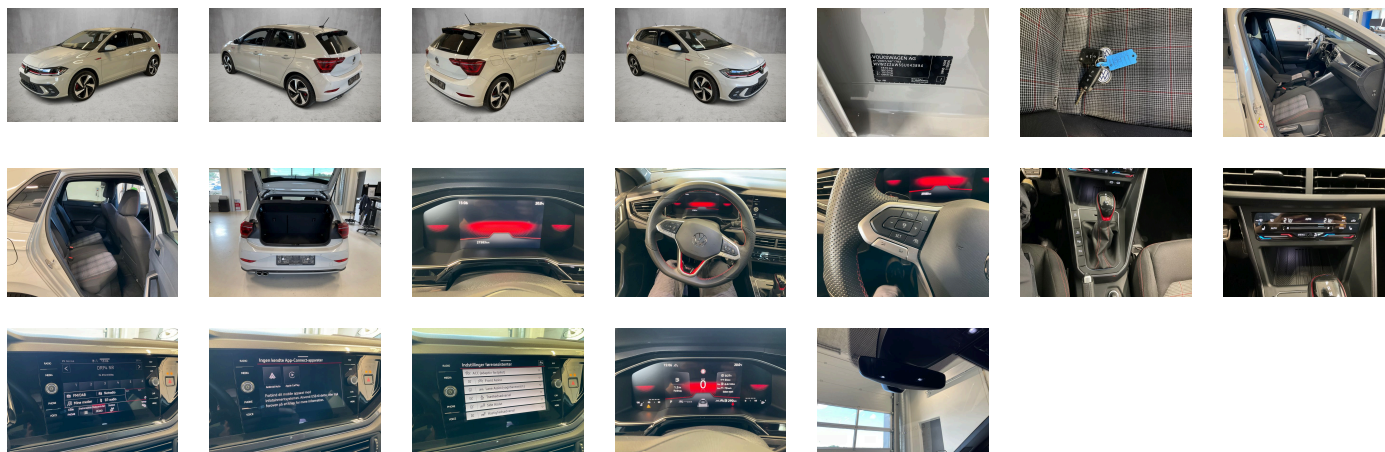
**Legal tire tread (minimum 1.6 mm):**

Yes

## ACCESSORIES

South Africa manufacturing sequence, Height and longitudinally adjustable steering column, Emission standard- WLTP3 M1- N1-//EU6EA, Operating permit-alteration, Without front fog lamps, Without heat accumulator/auxiliary heater, Fuel system for fuel-injected SI engine, Curtain airbags in front and rear- side airbags in front- center airbag, Advanced high-beam control Dynamic Light Assist, Automatic headlight control with exit and entry lighting, Initial standard fuel filling, Tires 215/45 ZR 17, Preparation for subsequent activation: Navigation feature "Discover Media", Lights & Vision package, Without headlamp washer system, GTI, Ambient lighting, Laminated safety glass windshield- heat-insulating, Light unit in front footwell, Rear floor panel module- type 1, Chromed twin tailpipe- left, No special edition, Battery 380 A (68 Ah), Service indicator 30 000 km or 2 years (variable), Safety-optimized front head restraints, Infotainment package "Ready 2 Discover", Space- and weight-saving spare wheel- 18-inch, Air Care Climatronic 2 zone automatic climate control with enhanced air filter with activated carbon, Electronic Stability Control w/ driver steering recommendation- ABS- ASR- EDL and EDTC, Regional code " ECE " for radio, Without adhesive film, Alternator 140 A, Standard climatic zones, Sports suspension- vehicle body lowered, Disc brakes in front- red brake calipers, Standard roof, Power steering, Tool kit and jack, Two-tone horn, Non-smoker's package: Storage compartment and 12-V outlet in front, Inserts of front seats and outer rear seats in fabric "Scale Paper", Proactive passenger protection system in combination with Front Assist, Right exterior mirror- convex, Mobile phone interface with inductive charging feature, Front scuff plates in aluminum- with GTI logo, 4-cylinder SI engine 2.0 I TSI- 152 kW, Dynamic Road Sign Display, Dynamic headlight range control, Without surface protection- with additional transport protection measures, Chrome elements on power mirror and window regulator switches- on front vents on driver and fr. passenger side, Central locking system without SAFELOCK- with radio remote control and 2 remote control folding keys, Unsplit rear bench seat- asymmetric split folding backrest, Without additional front underbody guard, 2 USB-C ports in the front- 2 USB-C charging sockets on the center console in rear- charging capacity up to 45 W, 4 doors, Pedestrian and cyclist monitoring, Rear overhang- short, Without special body measures, Front center armrest- longitudinally adjustable- with storage compartment, Weight range 13 installation control only- no requirement forecast, Heated front seats, Disc brakes in rear- red brake calipers, Aspherical exterior mirror on driver side, Warning triangle, Luggage compartment floor adjustable in 2 heights- for flat cargo area, Fresh air intake system with combination filter, Dual-clutch transmission DSG DQ381, Not hot country, Park Assist with Park Distance Control, Without heated washer nozzles, 4 alloy wheels "Milton Keynes" 7.5J x 17- Black-diamond-turned surface, Multifunction camera, Power windows, Non-folding front passenger seat backrest, Lumbar supports in front, Without trailer hitch, Vehicle class differentiation - 2G0- for build status Europe, Wheelbase, Carrier frequency 433.92 MHz-434.42 Mhz, Door and side trim panel, Front stabilizer bar, IQ.LIGHT - LED matrix headlamps with LED separate daytime running light, Left-hand drive, Vehicles with special upgrade measures, Radio, Diversity antenna for FM reception, Online service- with OCU- with head unit coding- without engine immobilizer interconnection, Lane change system Side Assist and Rear Traffic Alert, Suspension range 15 installation control only- no requirement forecast, 6 speakers, Without alternative drive system, Body-colored exterior mirror housings and door handles, 3 head restraints in rear, Price control for model update 2024 II, LED interior lights with switch-off delay and dimmer- 2 LED reading lights in front and 2 in rear, Without auxiliary heater/parking heater, Without additional tires, Black headliner, Activated carbon canister (Evaporative Emission Control System (EVAP)), Pedals in brushed stainless steel, ISOFIX anchors for child seats on outer rear bench seats and on front passenger seat- compatible for i-Size, Illuminated molding between headlamps, Luggage compartment lighting, Without decals and emblems, 3-point seat belts in front with height adjustment and seat belt pretensioners, Advanced driver attention & drowsiness monitor, Privacy glass for rear side windows and rear window, Decorative inserts "Deep Iron Gray" for dashboard and front door trim panels, Electronic immobilizer, Without camera systems/accident sensors, Hatchback, Adaptive Cruise Control ACC stop & go incl. speed limiter, Driving on the right, Multi-color Digital Cockpit- selection of different info profiles possible, Auto-dimming interior rearview mirror, Driving Mode Selection, Carpet mats in front and rear, 4-cylinder SI engine 2.0 I, Special identification label for EC for M1 passenger vehicles, Shock absorption in front, Leather multi-function sports steering wheel with shift paddles, Rear fog lamp for driving on the right, Hand brake lever handle in leather, Premium sports seats in front, 3-point seat belts with seat belt pretensioners for the outer rear seats, Trims for alloy wheels, Digital radio reception DAB+, ECO function, Map pockets on the back of each front seat, Storage compartment for Manual under left front seat, 7-speed automatic transmission or dual-clutch transmission DSG- note: PR family EDF, Gearshift knob in aluminum-leather combination, Rear window wiper with intermittent control, Tire Pressure Monitoring System, "Standard Plus" version, Semi-automated driving assistance Travel Assist and lane keeping system Lane Assist, Instrument cluster with electronic speedometer- odometer and trip odometer- tachometer, Exterior mirrors- power-adjustable- folding and heated- w/ front passenger exterior mirror lowering function, Space- and weight-saving spare wheel, Standard battery/alternator capacity, Driver and front passenger airbag with front passenger airbag deactivation, Type approval country Denmark, 3-point seat belt for center rear seat, Delivery equipment- water border, Front-wheel drive, App-Connect Wireless for Apple CarPlay and Android Auto, Refrigerant R1234yf, Part set without country-specific prescriptive standard, Heavy-duty rear axle, No special purpose vehicle- standard equipment, Foamed dashboard, Front seats with height adjustment, LongLife Service Regime, With UNECE CS (R155) without SU (R156), Warning signal and warning light for front and rear seat belts not fastened, Hill start assist, Rain sensor, Start-stop system with regenerative braking, Manual in Danish, Tires without specification of tire brand, Wheel locks with extended theft protection, Illuminated vanity mirrors in sun visors, Emergency call service-10-year contract duration as of initial delivery- condition: mob. phone network available, Nameplate set "GTI", Electronic differential lock XDS, Bumpers in sports style- air intakes in honeycomb structure- black sill extension, Luggage compartment cover, LED rear combination lamps with dynamic turn signal, Without voice control, Warning lamp for washer fluid level, Installation of SLI battery in rear- without second battery, Denmark: DK package Basic forces: WLA-WF1-4KF, Style/GTI: WLB-9AK-4KF, Life/R-Line: WLA-9AK-4KF, Preparation for VW Connect and VW Connect Plus, IQ.DRIVE assistance systems package, Park & Convenience assistance package, Autonomous Emergency Braking Front Assist (for Adaptive Cruise Control ACC up to 210 km/h), Equipment options subset for Denmark

**PICTURES**



**Picture viewer:** <https://fm.bilsalg.dk/business/picturebrowser?t=full&guid=1a103dfd-c8ef-4876-a6d0-d34189e6a83f&carid=24694318>

## OVERVIEW OF DAMAGES AND SHORTAGES

No damages or shortages

## ELECTRICAL AND MECHANICAL CONDITION

N° LOCATION	TYPE	NOTES
1	Is the car drivable	Yes