

**VEHICLE DESCRIPTION - Cupra León 1.5 eTSI MHEV**



**First registration date:**  
5/2025

**VIN:**  
VSSZZZKL7SR095145

**Colour:**  
Blue Metallic Normal gloss

**Mileage (km):**  
66.419

**Gear:**  
Automatic (7 Gears)

**Fuel type:**  
Hybrid petrol

**Body type:**  
Estate Wagon

**Number of doors:**  
5

**Drive type:**  
FWD

**Model year:**  
2024

**Engine power:**  
110 kW

**Number of seats:**  
5

**Engine size (cc):**  
1498

**Interior:**  
Black Partial leatherette

**VEHICLE DETAILS**

**Number of keys:**  
2

**Number of license plates:**  
2

**Registration certificate:**  
Part 1 present

**Service documentation:**  
Yes

**Inspection date:**  
09-06-2026

**Last service (year/month):**  
2026/5

**Mileage (km) at last service:**  
64.868

**SUMMARY OF THE VEHICLE'S CONDITION**

**Is the car in a driveable condition:**  
Yes

**Legal tire tread (minimum 1.6 mm):**  
Yes

## WHEELS

TYPE	SEASON	BRAND	POSITION	RIM	SIZE	TREAD
Fitted	Summer tires		Front Left	Alloy rim	18"	4 mm
Fitted	Summer tires		Rear Right	Alloy rim	18"	4 mm
Fitted	Summer tires		Rear Left	Alloy rim	18"	4 mm
Fitted	Summer tires		Front Right	Alloy rim	18"	4 mm

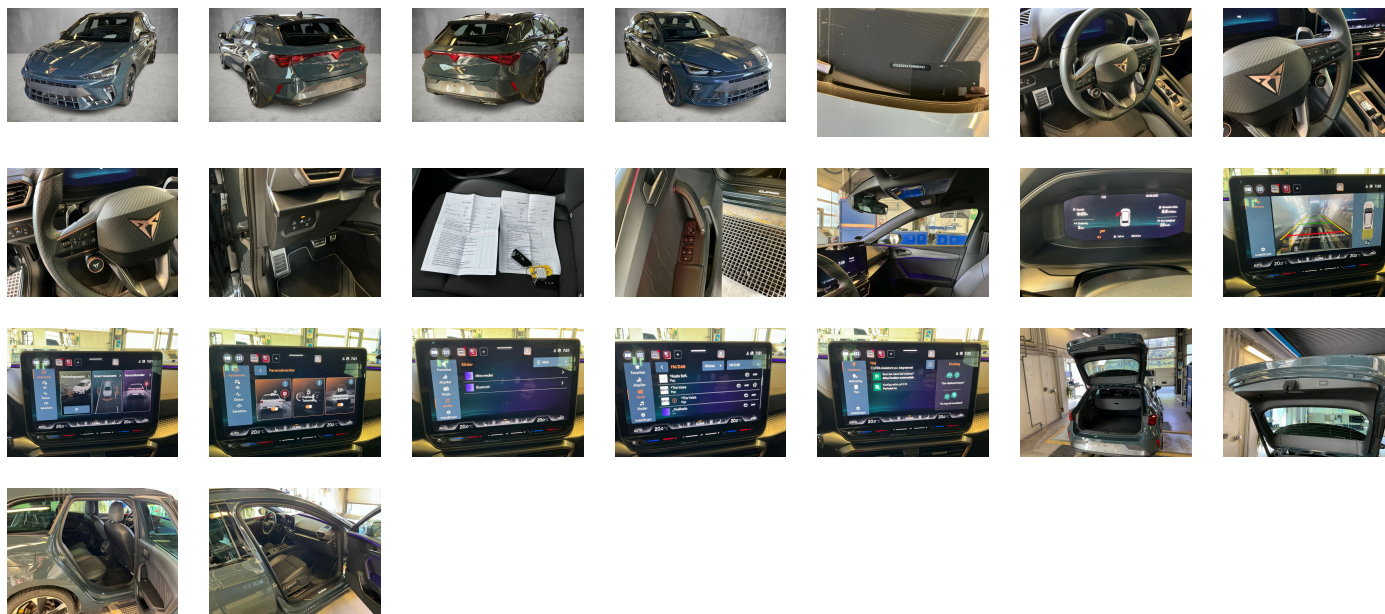
### Legal tire tread (minimum 1.6 mm):

Yes

## ACCESSORIES

With emergency steering support with turn assist, Without heat accumulator/auxiliary heater, High-beam control, Front fog lamps, Fuel system for fuel-injected SI engine, Side airbag in front with curtain airbag and interaction airbag in front, Separate daytime running light with automatic headlight control and automat. Coming and Leaving Home feature, Initial standard fuel filling, Luggage compartment trim- with storage compartments, Standard electronic engine sound, Without customized installation, 230-V inverter and outlet for Europe, Comfort sports equipment Leon, Brake control system for vehicles with electric drive (ESC and electromechanical brake booster), Rear floor panel module- type 4, No special edition, Without headlamp washer system- with washer fluid level indicator, Interior ambient lighting- type 2, With welcome light (mirror), Navigation system preparation (Baseline), Disc brakes in front (Geomet D), Vehicle class differentiation -5FN-, Service indicator 30 000 km or 2 years ( variable ), Front head restraints, Preparation for alcohol interlock, Heat insulating windshield, Regional code " ECE " for radio, Standard climatic zones, Rear shock absorption- sports version, Exterior mirrors: convex on driver side- convex on front passenger side, Without roof insert (standard roof), Comfort telephony: wireless charging (fast charge) and external antenna connection, Single-tone horn, Without extended safety system, Non-smoker's package, Tool kit, Tires 225/40 R18 92Y xl, Scuff plates in door apertures (illuminated), Chrome package, With dynamic road sign display, Dynamic headlight range control (self-adjusting while driving), Without surface protection- with additional transport protection measures, Unsplit rear seat bench- split folding backrest- with center armrest, Decorative inserts for console, External- USB type C data socket(s) and charging socket(s), Weight range 7 installation control only- no requirement forecast, Without additional front underbody guard, Without preparation for VTS (vehicle tracking system), Standard seats in front, Without Car2X, Without mode 3 charging cable, Without special body measures, In-plant control of self-collection, Center armrest in front, Seat heater for front seats separately controlled, Basic equipment variant, Disc brakes in rear, Without first aid kit and warning triangle, Park distance control in front and rear, Without additional side body covers (stone guard), Not hot country, Front stabilizer bar, Without heated washer nozzles, With multifunction camera, Power windows with comfort operation and circuit breaker, Variable luggage/load compartment floor, Without backrest release for front seats, Manually adjustable lumbar support in front seats, Without locking and starting systems, Mechanical rear seat release, Black Exterior Brightware, Forward collision warning with warning and braking reaction to vehicles- pedestrians and cyclists, Wheelbase, Emblems, Without Connect package 1, LED headlamps with lens, Left-hand drive, Vehicles with special upgrade measures, Without lane change assist, Without rear stabilizer bar, Antenna for FM reception only- diversity, Suspension range 13 installation control only- no requirement forecast, Online service- with OCU- with head unit coding- without engine immobilizer interconnection, Unsplit molded headliner, Exterior mirror housings painted, Hybrid drive system mHEV, Two reading lights in front- two in rear, Speakers in front and rear, Climatronic (3-zone) with air conditioning control panel in rear, Trailer hitch preparation, Without auxiliary heater/parking heater, Without additional tires, Keyless locking and starting system Keyless Advanced without SAFELOCK, "Edge" package without SAFELOCK, Pedal cluster, Activated carbon canister (Evaporative Emission Control System (EVAP)), Child seat anchors f. child seat system i-Size- 2x top tether and child seat anchors in front on front passenger side, 3-point seat belts- front, Shock absorption in front, 4-cylinder gasoline engine 1.5 l/110 kW TSI- base engine: TJ7/N09/T9F- TSI, Advanced driver attention & drowsiness monitor, Side windows in heat-insulating glass- from B-pillar and rear window dark tinted, Station wagon LEON Sportstourer, Adaptive cruise control, Dynamic steering, Folding grab handles- multi-piece, Driving on the right, With rear view camera system (type 2), Without floor mats, Without charging cable, Breakaway interior rearview mirror- auto-dimming, Driving profile selection and conventional shock absorber, Freely programmable instrument cluster Medium, UWB-capable country and carrier frequency- 433.92 to 434.42 MHz, Without seat ventilation/massage seat, Anti-theft alarm system- interior monitoring- backup horn- and towing protection, Without license plate carrier, Special identification label for EC for M1 passenger vehicles, Without socket, Rear fog lamp, Alloy wheels 7.5J x 18, With predictive speed limiter, 3-point seat belts- outer rear with ECE label, Digital radio reception, Without drawers under front seats, Luggage pockets on backrest, Without gearshift knob/handle, Black roof rails, Antenna amplifier type 1, 7-speed automatic transmission "A7", Infotainment system with scalable module options (Optionsinfotainment- MIB3 model update) version 2, Supersports steering wheel with tiptronic- heated, Rear window wiper and washer system with intermittent control, Tire pressure monitoring system, Lane keeping system, Instrument cluster- km/h speedometer, Exterior mirrors- power-folding/adjustable- heated- w/ front passenger exterior mirror lowering function, Without delivery equipment, Breakdown kit, Without electric motor (hybrid), Standard battery/alternator capacity, Sensor-controlled luggage compartment opener, Airbag on driver and front passenger side- without knee airbag- with front passenger airbag deactivation, Without fire extinguisher, Type approval country Denmark, 3-point seat belt for center rear seat, Front-wheel drive, Without head-up display, Belt-driven integrated starter alternator 48 V 110 - 250 A, Type sign and company logo, Wired & Wireless App-Connect, Three rear head restraints, Installation differentiation for transmission DQ200 -- vehicle components --, Refrigerant R1234yf, Standard rear axle, Part set without country-specific prescriptive standard, Control of series production, 4-cylinder SI engine 1.5 l unit 05E.D, No special purpose vehicle- standard equipment, With UN-ECE cybersecurity & software update, Manual height adjustment for front seats, LongLife Service Regime, Dashboard, Visual and acoustic seat belt reminder- electric contact in front and rear, Without hill start assist/hill descent control/comfort driving assist, Windshield wiper intermittent control with light/rain sensor, Start-stop system with regenerative braking, Standard wheel bolts, Without nameplate set (without model designation), Operating permit- alteration, Manual in Danish, Tires without specification of tire brand, Sun visors with mirror- illuminated- with airbag label on sun visor and B-pillar, Net partition, Private emergency call system, Emission standard- WLTP3 M1-N1-l//EU6EB, Standard manufacturing sequence, Electronic differential lock XDS- dynamic traction support, Seat trim covers in fabric, LED rear combination lamp- dynamic turn signal, Door and side trim panel, Luggage compartment cover- sliding, Battery 420 A (70 Ah), Without second battery, Without special specifications, Sports bumpers, Voice control, Parking brake, Equipment options subset for Denmark

**PICTURES**



**Picture viewer:** <https://fm.bilsalg.dk/business/picturebrowser?t=full&guid=39d41c8e-b739-4569-9071-696abe5cd17f&carid=24677415>

### OVERVIEW OF DAMAGES AND SHORTAGES

No damages or shortages

### ELECTRICAL AND MECHANICAL CONDITION

N°	LOCATION	TYPE	NOTES
1	Is the car drivable	Yes	