

VEHICLE DESCRIPTION - Cupra León 1.5 eTSI MHEV



First registration date:
5/2025

VIN:
VSSZZKL4SR092736

Colour:
Blue Normal gloss

Mileage (km):
9.150

Gear:
Automatic (7 Gears)

Fuel type:
Hybrid petrol

Body type:
Estate Wagon

Number of doors:
5

Drive type:
FWD

Model year:
2024

Engine power:
110 kW

Number of seats:
5

Engine size (cc):
1498

Interior:
Grey Partial leatherette

VEHICLE DETAILS

Number of keys:
2

Number of license plates:
2

Registration certificate:
Part 1 present

Service documentation:
No

Inspection date:
08-06-2026

Last service (year/month):

Mileage (km) at last service:

SUMMARY OF THE VEHICLE'S CONDITION

Is the car in a driveable condition:
Yes

Legal tire tread (minimum 1.6 mm):
Yes

WHEELS

TYPE	SEASON	BRAND	POSITION	RIM	SIZE	TREAD
Fitted	Summer tires		Front Left	Alloy rim	18"	6 mm
Fitted	Summer tires		Rear Right	Alloy rim	18"	6 mm
Fitted	Summer tires		Rear Left	Alloy rim	18"	6 mm
Fitted	Summer tires		Front Right	Alloy rim	18"	6 mm

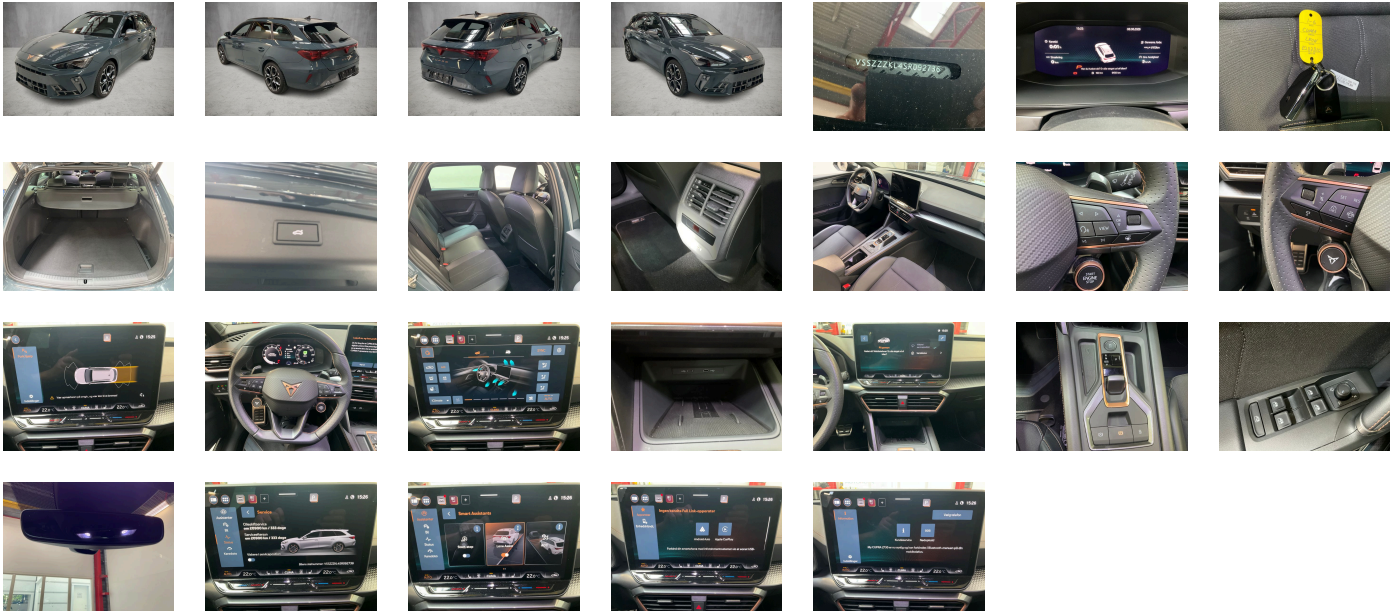
Legal tire tread (minimum 1.6 mm):

Yes

ACCESSORIES

With emergency steering support with turn assist, Without heat accumulator/auxiliary heater, High-beam control, Front fog lamps, Fuel system for fuel-injected SI engine, Side airbag in front with curtain airbag and interaction airbag in front, Separate daytime running light with automatic headlight control and automat. Coming and Leaving Home feature, Initial standard fuel filling, Luggage compartment trim- with storage compartments, Standard electronic engine sound, Without customized installation, 230-V inverter and outlet for Europe, Comfort sports equipment Leon, Brake control system for vehicles with electric drive (ESC and electromechanical brake booster), Rear floor panel module- type 4, No special edition, Without headlamp washer system- with washer fluid level indicator, With welcome light (mirror), Interior ambient lighting- type 1, Navigation system preparation (Baseline), Disc brakes in front (Geomet D), Vehicle class differentiation -5FN-, Service indicator 30 000 km or 2 years (variable), Front head restraints, Preparation for alcohol interlock, Heat insulating windshield, Regional code " ECE " for radio, Standard climatic zones, Rear shock absorption- sports version, Exterior mirrors: convex on driver side- convex on front passenger side, Without roof insert (standard roof), Comfort telephony: wireless charging (fast charge) and external antenna connection, Single-tone horn, Without extended safety system, Non-smoker's package, Tool kit, Tires 225/40 R18 92Y xl, Scuff plates in door apertures (illuminated), Chrome package, With dynamic road sign display, Dynamic headlight range control (self-adjusting while driving), Without surface protection- with additional transport protection measures, Unsplit rear seat bench- split folding backrest- with center armrest, Decorative inserts for console, External- USB type C data socket(s) and charging socket(s), Weight range 7 installation control only- no requirement forecast, Without additional front underbody guard, Without preparation for VTS (vehicle tracking system), Standard seats in front, Without Car2X, Without mode 3 charging cable, Without special body measures, In-plant control of self-collection, Central locking system Keyless Go without SAFELock, Center armrest in front, Seat heater for front seats separately controlled, Basic equipment variant, Disc brakes in rear, Without first aid kit and warning triangle, Park distance control in front and rear, Without additional side body covers (stone guard), Not hot country, Front stabilizer bar, Without heated washer nozzles, With multifunction camera, Power windows with comfort operation and circuit breaker, Variable luggage/load compartment floor, Without backrest release for front seats, Manually adjustable lumbar support in front seats, Without locking and starting systems, Mechanical rear seat release, Black Exterior Brightware, Forward collision warning with warning and braking reaction to vehicles- pedestrians and cyclists, Wheelbase, Emblems, Without Connect package 1, LED headlamps with lens, Left-hand drive, Vehicles with special upgrade measures, Without lane change assist, Without rear stabilizer bar, Antenna for FM reception only- diversity, Suspension range 13 installation control only- no requirement forecast, Online service- with OCU- with head unit coding- without engine immobilizer interconnection, Unsplit molded headliner, Exterior mirror housings painted, Hybrid drive system mHEV, Two reading lights in front- two in rear, Speakers in front and rear, Climatronic (3-zone) with air conditioning control panel in rear, Trailer hitch preparation, Without auxiliary heater/parking heater, Without additional tires, Pedal cluster, Activated carbon canister (Evaporative Emission Control System (EVAP)), Child seat anchors f. child seat system i-Size- 2x top tether and child seat anchors in front on front passenger side, 3-point seat belts- front, Shock absorption in front, 4-cylinder gasoline engine 1.5 l/110 kW TSI- base engine: TJ7/N09/T9F- TSI, Advanced driver attention & drowsiness monitor, Side windows in heat-insulating glass- from B-pillar and rear window dark tinted, Station wagon LEON Sportstourer, Electronic immobilizer, Adaptive cruise control, Dynamic steering, Folding grab handles- multi-piece, Without camera systems/accident sensors, Driving on the right, Without floor mats, Without charging cable, Breakaway interior rearview mirror- auto-dimming, Driving profile selection and conventional shock absorber, Freely programmable instrument cluster Medium, UWB-capable country and carrier frequency- 433.92 to 434.42 MHz, Without seat ventilation/massage seat, Without license plate carrier, Special identification label for EC for M1 passenger vehicles, Without socket, Rear fog lamp, With predictive speed limiter, 3-point seat belts- outer rear with ECE label, Digital radio reception, Without drawers under front seats, Luggage pockets on backrest, Without gearshift knob/handle, Black roof rails, Antenna amplifier type 1, 7-speed automatic transmission "A7", Infotainment system with scalable module options (Optionsinfotainment- MIB3 model update) version 2, Supersports steering wheel with tiptronic- heated, Rear window wiper and washer system with intermittent control, Tire pressure monitoring system, Lane keeping system, Instrument cluster- km/h speedometer, Exterior mirrors- power-folding/adjustable- heated- w/ front passenger exterior mirror lowering function, Without delivery equipment, Breakdown kit, Without electric motor (hybrid), Standard battery/alternator capacity, Airbag on driver and front passenger side- without knee airbag- with front passenger airbag deactivation, Without fire extinguisher, Type approval country Denmark, Tailgate/trunk lid power closing, 3-point seat belt for center rear seat, Front-wheel drive, Without head-up display, Belt-driven integrated starter alternator 48 V 110 - 250 A, Type sign and company logo, Wired & Wireless App-Connect, Three rear head restraints, Installation differentiation for transmission DQ200 -- vehicle components --, Refrigerant R1234yf, Standard rear axle, Part set without country-specific prescriptive standard, Control of series production, 4-cylinder SI engine 1.5 l unit 05E.D, No special purpose vehicle- standard equipment, With UN-ECE cybersecurity & software update, Manual height adjustment for front seats, 18-inch alloy wheels "Windstorm"- machined- 7.5J x 18- Black/Silver- style 2 "Windstorm", LongLife Service Regime, Dashboard, Visual and acoustic seat belt reminder- electric contact in front and rear, Without hill start assist/hill descent control/comfort driving assist, Windshield wiper intermittent control with light/rain sensor, Operating permit- alteration, Start-stop system with regenerative braking, Without nameplate set (without model designation), Manual in Danish, Tires without specification of tire brand, Wheel bolts with anti-theft protection (unlockable), Sun visors with mirror-illuminated- with airbag label on sun visor and B-pillar, Net partition, Private emergency call system, Standard manufacturing sequence, Electronic differential lock XDS- dynamic traction support, Alloy wheels 7.5J x 18, Seat trim covers in fabric, Emission standard- WLTP3 M1- N1-l/!EU6EB, LED rear combination lamp- dynamic turn signal, Door and side trim panel, Luggage compartment cover- sliding, Battery 420 A (70 Ah), Without second battery, Without special specifications, Sports bumpers, Voice control, Parking brake, Equipment options subset for Denmark

PICTURES



Picture viewer: <https://fm.bilsalg.dk/business/picturebrowser?t=full&guid=cb509706-0c11-4536-9316-a687a54742f6&carid=24670775>

OVERVIEW OF DAMAGES AND SHORTAGES

N°	LOCATION	TYPE	SEVERITY	INSURANCE	NOTES	DAMAGE GROUP
1	Front Windscreen	Stone Chips	C5		Reporting needed	



Severity explanation:

C0 = No damage / C1 = Simple preparation / C2 = Minor preparation needed / C3 = Can be smart repaired / C4 = Repair/spray paint / C5 = Need replacement

ELECTRICAL AND MECHANICAL CONDITION

N°	LOCATION	TYPE	NOTES
1	Is the car drivable	Yes	