

VEHICLE DESCRIPTION - Cupra Formentor 1.5 eTSI 150 HK CUV DSG7 1.5 eTSI MHEV



First registration date:
5/2025

VIN:
VSSZZZKM1SR071237

Colour:
Black Metallic Normal gloss

Mileage (km):
18.328

Gear:
Automatic (7 Gears)

Fuel type:
Hybrid petrol

Body type:
SUV

Number of doors:
5

Drive type:
FWD

Model year:
2024-2024

Engine power:
110 kW

Number of seats:
5

Engine size (cc):
1498

Interior:

VEHICLE DETAILS

Number of keys:
2

Number of license plates:
2

Registration certificate:
Part 1 & 2 present

Service documentation:
No

Inspection date:
01-06-2026

Last service (year/month):


Mileage (km) at last service:

SUMMARY OF THE VEHICLE'S CONDITION

Is the car in a driveable condition:
Yes

Legal tire tread (minimum 1.6 mm):
Yes

WHEELS

 TYPE	SEASON	BRAND	POSITION	RIM	SIZE	TREAD
Fitted	Summer tires		Front Left	Alloy rim	18"	6 mm
Fitted	Summer tires		Rear Right	Alloy rim	18"	6 mm
Fitted	Summer tires		Rear Left	Alloy rim	18"	6 mm
Fitted	Summer tires		Front Right	Alloy rim	18"	6 mm

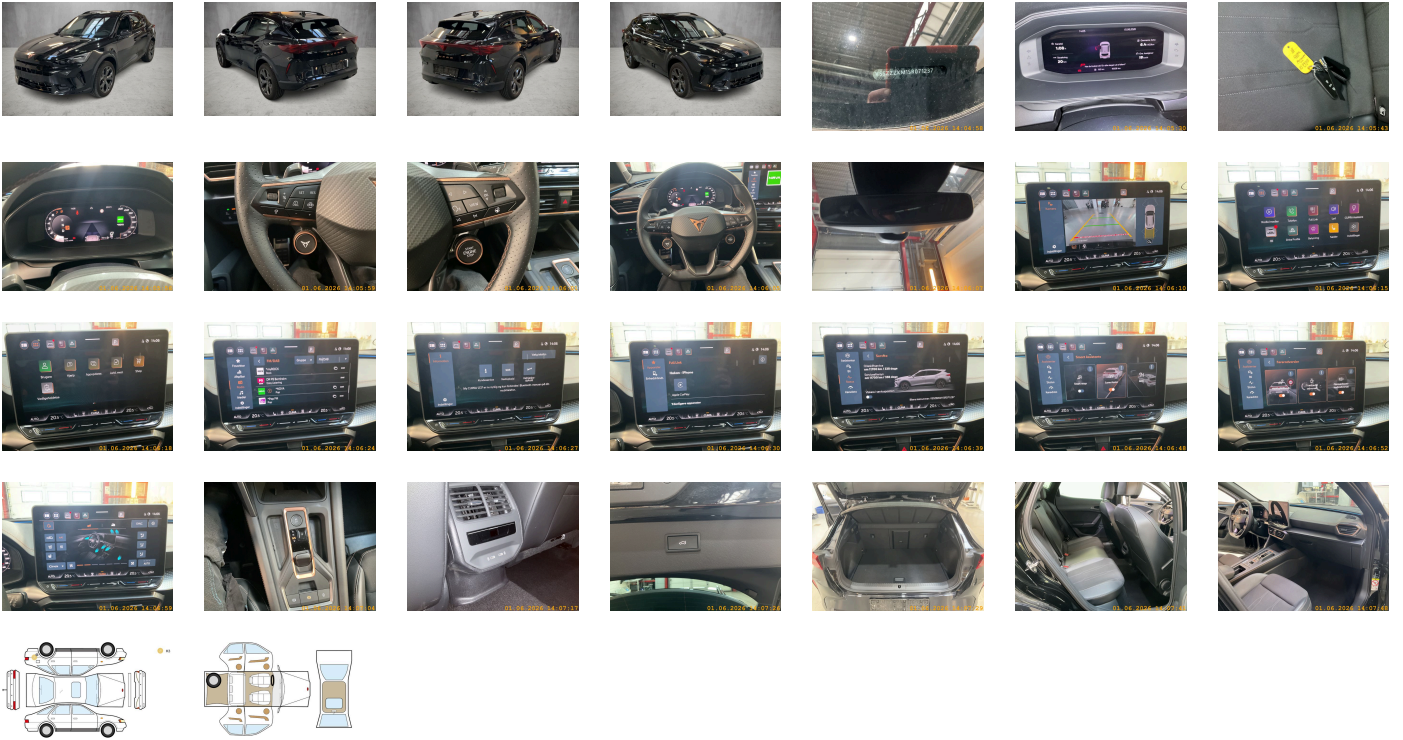
Legal tire tread (minimum 1.6 mm):

Yes

ACCESSORIES

With emergency steering support with turn assist, Without heat accumulator/auxiliary heater, High-beam control, Front fog lamps, Fuel system for fuel-injected SI engine, Separate daytime running light with automatic headlight control and automat. Coming and Leaving Home feature, Initial standard fuel filling, Side airbag in front and rear- with curtain airbag and interaction airbag in front, Luggage compartment trim- with storage compartments, Special price, Standard electronic engine sound, Rear exhaust tailpipe (standard), Without customized installation, 230-V inverter and outlet for Europe, Heat-reflecting windshield, Comfort sports equipment Formentor, Rear floor panel module- type 1, Brake control system for vehicles with electric drive (ESC and electromechanical brake booster), No special edition, Without headlamp washer system- with washer fluid level indicator, Interior ambient lighting- type 2, Disc brakes in front, With welcome light (mirror), Navigation system preparation (Baseline), Service indicator 30 000 km or 2 years (variable), Front head restraints, Preparation for alcohol interlock, Regional code " ECE " for radio, Vehicle class differentiation -5FF-, Rear shock absorption- basic version 1, Standard climatic zones, Exterior mirrors: convex on driver side- convex on front passenger side, Without roof insert (standard roof), Comfort telephony: wireless charging (fast charge) and external antenna connection, Single-tone horn, Without extended safety system, Non-smoker's package, Tool kit, Alloy wheels 8j x 18, Scuff plates in door apertures (illuminated), Chrome package, With dynamic road sign display, Dynamic headlight range control (self-adjusting while driving), Without surface protection- with additional transport protection measures, Unsplit rear seat bench- split folding backrest- with center armrest, Decorative inserts for console, Weight range 4 installation control only- no requirement forecast, External- USB type C data socket(s) and charging socket(s), Without additional front underbody guard, Without preparation for VTS (vehicle tracking system), Standard seats in front, Without Car2X, Without mode 3 charging cable, Without special body measures, In-plant control of self-collection, Without vehicle inlet, Center armrest in front, Seat heater for front seats separately controlled, Basic equipment variant, Disc brakes in rear, Without first aid kit and warning triangle, Suspension range 05 installation control only- no requirement forecast, Park distance control in front and rear, Installation differentiation for transmission DQ381 -- vehicle components --, Not hot country, Front stabilizer bar, Without heated washer nozzles, With multifunction camera, Power windows with comfort operation and circuit breaker, Standard rear seat release, Variable luggage/load compartment floor, Without backrest release for front seats, Manually adjustable lumbar support in front seats, Without locking and starting systems, Black Exterior Brightware, Forward collision warning with warning and braking reaction to vehicles- pedestrians and cyclists, Wheelbase, Emblems, LED headlamps with lens, Left-hand drive, Vehicles with special upgrade measures, Without lane change assist, Antenna for FM reception only-diversity, Online service- with OCU- with head unit coding- without engine immobilizer interconnection, Rear stabilizer bar, Unsplit molded headliner, Exterior mirror housings painted, Hybrid drive system mHEV, Two reading lights in front- two in rear, Speakers in front and rear, Climatronic (3-zone) with air conditioning control panel in rear, Trailer hitch preparation, Without auxiliary heater/parking heater, Without additional tires, Keyless locking and starting system Keyless Advanced without SAFELOCK, Pedal cluster, Activated carbon canister (Evaporative Emission Control System (EVAP)), Child seat anchors f. child seat system i-Size- 2x top tether and child seat anchors in front on front passenger side, 3-point seat belts- front, Decorative inserts, Shock absorption in front, 4-cylinder gasoline engine 1.5 l/110 kW TSI- base engine: TJ7/N09/T9F- TSI, Advanced driver attention & drowsiness monitor, Side windows in heat-insulating glass- from B-pillar and rear window dark tinted, Reduced price package, Adaptive cruise control, Dynamic steering, Driving on the right, With rear view camera system (type 2), Without floor mats, Without charging cable, Breakaway interior rearview mirror- auto-dimming, Driving profile selection and conventional shock absorber, Freely programmable instrument cluster Medium, UWB-capable country and carrier frequency- 433.92 to 434.42 MHz, Without seat ventilation/massage seat, MPV Formentor, Anti-theft alarm system- interior monitoring- backup horn- and towing protection, Without license plate carrier, Special identification label for EC for M1 passenger vehicles, Without socket, Rear fog lamp, With predictive speed limiter, 3-point seat belts- outer rear with ECE label, Digital radio reception, Without drawers under front seats, Luggage pockets on backrest, Without gearshift knob/handle, Black roof rails, Antenna amplifier type 1, 7-speed automatic transmission "A7", Infotainment system with scalable module options (Optionsinfotainment- MIB3 model update) version 2, Supersports steering wheel with tiptronic- heated, Rear window wiper and washer system with intermittent control, Tire pressure monitoring system, Lane keeping system, Instrument cluster- km/h speedometer, Exterior mirrors- power-folding/adjustable- heated- w/ front passenger exterior mirror lowering function, Without delivery equipment, Breakdown kit, Without electric motor (hybrid), Standard battery/alternator capacity, Operating permit- alteration, Tires 245/45 R18 96W super-low rolling resistance- generation 2 (polymer coating), Sensor-controlled luggage compartment opener, Without fire extinguisher, Type approval country Denmark, 3-point seat belt for center rear seat, "Edge" package without SAFELOCK, Front-wheel drive, Without head-up display, Belt-driven integrated starter alternator 48 V 110 - 250 A, Type sign and company logo, Wired & Wireless App-Connect, Airbag on driver and front passenger side- knee airbag on driver/front pass. side- with front pass. airbag deactivat., Three rear head restraints, Without partition, Refrigerant R1234yf, Part set without country-specific prescriptive standard, Control of series production, 4-link rear suspension, 4-cylinder SI engine 1.5 l unit 05E.D, No special purpose vehicle- standard equipment, With UN-ECE cybersecurity & software update, Manual height adjustment for front seats, LongLife Service Regime, Visual and acoustic seat belt reminder- electric contact in front and rear, Windshield wiper intermittent control with light/rain sensor, Start-stop system with regenerative braking, Standard wheel bolts, Without nameplate set (without model designation), Manual in Danish, Tires without specification of tire brand, Sun visors with mirror- illuminated- with airbag label on sun visor and B-pillar, Private emergency call system, Standard manufacturing sequence, Electronic differential lock XDS- dynamic traction support, Seat trim covers in fabric, Emission standard- WLTP3 M1- N1- l//EU6EB, LED rear combination lamp- dynamic turn signal, Door and side trim panel, Battery 420 A (70 Ah), Without second battery, Sports bumpers, Without special specifications, Voice control, Parking brake, Equipment options subset for Denmark


PICTURES



Picture viewer: <https://fm.bilsalg.dk/business/picturebrowser?t=full&guid=00f76e2a-ef60-46d4-914a-5de96ae52b00&carid=24654398>

OVERVIEW OF DAMAGES AND SHORTAGES

N°	LOCATION	TYPE	SEVERITY	INSURANCE	NOTES	DAMAGE GROUP
1	L. Rear Quarter Panel	Scratch	C3			



Severity explanation:

C0 = No damage / C1 = Simple preparation / C2 = Minor preparation needed / C3 = Can be smart repaired / C4 = Repair/spray paint / C5 = Need replacement

ELECTRICAL AND MECHANICAL CONDITION

N°	LOCATION	TYPE	NOTES
1	Is the car drivable	Yes	