

VEHICLE DESCRIPTION - Seat Ibiza Dynamic FR 1.0 TSI



First registration date: 5/2025	VIN: VSSZZKJ2SR516817
Colour: Black Metallic Normal gloss	Mileage (km): 16.185
Gear: Automatic (7 Gears)	Fuel type: Gasoline
Body type: Hatchback	Number of doors: 5
Drive type: FWD	Model year: 2021-2025
Engine power: 85 kW	Number of seats: 5
Engine size (cc): 999	Interior: Dark blue Fabric

VEHICLE DETAILS

Number of keys: 2	Number of license plates: 2	Registration certificate: Part 1 & 2 present	Service documentation: Yes
Inspection date: 01-06-2026	Last service (year/month): 2025/3	Mileage (km) at last service: 8	

SUMMARY OF THE VEHICLE'S CONDITION

Is the car in a driveable condition: Yes	Legal tire tread (minimum 1.6 mm): Yes
--	--

WHEELS

TYPE	SEASON	BRAND	POSITION	RIM	SIZE	TREAD
Fitted	Winter tires		Rear Left	Alloy rim	18"	7 mm
Fitted	Winter tires		Front Right	Alloy rim	18"	6 mm
Fitted	Winter tires		Front Left	Alloy rim	18"	6 mm
Fitted	Winter tires		Rear Right	Alloy rim	18"	7 mm

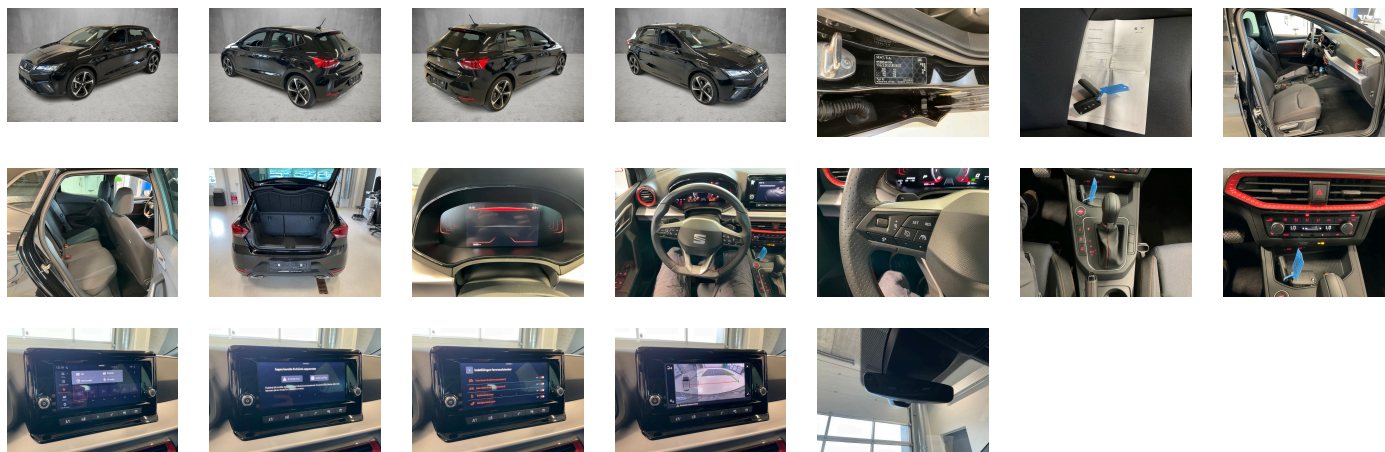
Legal tire tread (minimum 1.6 mm):

Yes

ACCESSORIES

Interior light in footwell, Luggage compartment cover- folding, Without fire extinguisher, Without floor mats, 3-point seat belts in front- with belt clamping device- without height adjustment, Standard dashboard, Without CD changer/CD player, 7-speed automatic transmission "A7", Standard license plate lighting, Visual and acoustic seat belt reminder- electric contact in front and rear, Without additional front underbody guard, Separate daytime running light with automatic headlight control and manual Coming and Leaving Home feature, Rear overhang- short, Keyless locking and starting system Keyless Access without SAFELock, Without heat accumulator/auxiliary heater, Driving on the right, High-beam control, Adaptive cruise control (with "follow-to-stop") and speed limiter, Digital radio reception, Side airbag in front with curtain airbag, Standard paint coating, Without roof rails/roof load rack, Without customized installation, Tires without specification of tire brand, In-plant control of self-collection, Unsplit molded headliner, Advanced driver attention & drowsiness monitor, Variant, 3-cylinder gasoline engine 1.0 l/85 kW- TSI base engine: TJ4- "TSI", Side windows in heat-insulating glass- from B-pillar and rear window dark tinted, Standard design, Standard climatic zones, Emblems, Wheelbase, Airbag on driver and front passenger side- without knee airbag- with front passenger airbag deactivation, Luggage compartment trim (design 1), Without roof insert (standard roof), Installation differentiation for transmission DQ200 -- vehicle components --, Rear window wiper and washer system with intermittent control, Tires 215/40 R18 89W xl, Rear exhaust tailpipe (standard), 3-point seat belt for center rear seat, Electronic immobilizer, LongLife Service Regime, External- USB type C- only data socket(s), Without headlamp washer system, Alloy wheels 7j x 18, Without alternative drive system, Without special specifications, Interior ambient lighting- type 1, Central locking system Keyless Entry without SAFELock, Without luggage nets/pockets on backrests, Without additional tires, 18-inch alloy wheels "Performance" 20/4- machined- Cosmo Gray, Park distance control in front and rear, Without lane change assist, Exterior mirrors- power-folding/adjustment- heated, Fresh air intake system with combination filter, Type approval country Denmark, Antifreeze up to -25 degree Celsius tolerance up to -30 degree C, Disc brakes in front (Geomet D), Without lumbar support in seat backrests, Freely programmable instrument cluster Basic, LED headlamps, Manual in Danish, Service indicator 30 000 km or 2 years (variable), No special edition, Safe & Driving package XL (in combination with "Media System"), Without backrest release for front seats, Without surface protection- with additional transport protection measures, Electronic differential lock XDS- dynamic traction support, Top sports equipment, Battery 320 A (49 Ah), Without luggage/load compartment floor, Control of series production, Reduced price package, 3-cylinder SI engine 1.0 l unit 05C.B, Left exterior mirror- convex, Decorative inserts, Vision Plus package: rear view camera system- park distance control in front and rear using ultrasonic sensors, "Standard Plus" version, Mobile phone interface, Heat-reflecting windshield, Exterior mirror housings and various add-on parts in body color, Without auxiliary heater/parking heater, Headlight range control, Without washer fluid level indicator, Child seat anchors for child seat system ISOFIX, Windshield wiper intermittent control with light/rain sensor, Power windows with comfort operation and circuit breaker, Without navigation device, Special control, Type sign and company logo, Without delivery equipment, Gearshift knob/handle in leather, Vehicle class differentiation -6F0-, Hand brake lever handle in leather, Without drawers under front seats, Rear shock absorption- sports version, Without first aid kit and warning triangle, Forward collision warning incl. autonomous emergency braking- for adaptive cruise control "high", Shock absorption in front, Without applications, Special price, Axial and vertical adjustable steering column, Breakaway interior rearview mirror- auto-dimming, Leather-wrapped multi-function sports steering wheel with tiptronic, Part set without country-specific prescriptive standard, Carrier frequency 433.92 MHz-434.42 Mhz, Refrigerant R1234yf, Extended and proactive pedestrian and cyclist protection, Without rear spoiler, Heavy-duty rear axle (design 2), Rear floor panel module- type 1, Sports bumpers, Protective side molding, Without additional side body covers (stone guard), Without special body measures, Breakdown kit, With dynamic road sign display, Electronic stability control (ESC), No special purpose vehicle- standard equipment, Without voice control, Vent, Without mounting fixture in luggage compartment, Hill start assist, Chrome package, Seat trim covers in fabric, Single-tone horn, Without center armrest in front, Hatchback, Seat heater for front seats separately controlled, Without additional noise suppression measures for passenger compartment, Without heated washer nozzles, Trims for alloy wheels, Without second battery, With rear view camera system (type 1), Entry-level infotainment system radio upgrade (UNECE), With UNECE CS (R155) without SU (R156), Lane keeping system plus traffic jam assist, Wired & Wireless App-Connect, 2 reading lights in front, Activated carbon canister (Evaporative Emission Control System (EVAP)), Non-smoker's package, Unsplit rear seat bench- split folding backrest, Standard seats in front, Right exterior mirror- convex, Driving profile selection and conventional shock absorber, Front-wheel drive, Not hot country, Pan-European emergency call service, Weight range 8 installation control only- no requirement forecast, Three rear head restraints, ECO function, Alternator 140 A, Vehicles with special upgrade measures, Special identification label for EC for M1 passenger vehicles, Front stabilizer bar, 4 doors, Fuel system for fuel-injected SI engine (tropicalized), Rear fog lamp, Disc brakes in rear (Geomet D), 3-point seat belts- outer rear with ECE label, Initial standard fuel filling, Standard wheel bolts, Tire pressure monitoring system, Suspension range 12 installation control only- no requirement forecast, Standard air cleaner, Antenna for AM/FM reception, Online service- with OCU- without head unit coding- without engine immobilizer interconnection, Regional code " ECE " for radio, Nameplate set, Emission standard- WLTP3 M1- N1-l//EU6EA, Door and side trim panel, Manual height adjustment for front seats, Sun visors with mirror- airbag label on front passenger sun visor, Front head restraints, Tool kit, Without special color trim, 6 speakers (passive), Front fog lamps, Without trailer hitch, Standard decorative trims, Left-hand drive, Start-stop system with regenerative braking, Instrument cluster- km/h speedometer, Without extended safety system, Operating permit- alteration, LED rear combination lamp, Climatronic with impact pressure control- CFC-free, Power steering, With multifunction camera, Standard pedal cluster, Standard manufacturing sequence, Equipment options subset for Denmark

PICTURES



Picture viewer: <https://fm.bilsalg.dk/business/picturebrowser?t=full&guid=27422c2d-f951-4368-87e2-06ef76096717&carid=24632100>

OVERVIEW OF DAMAGES AND SHORTAGES

No damages or shortages

ELECTRICAL AND MECHANICAL CONDITION

N° LOCATION	TYPE	NOTES
1	Is the car drivable	Yes