

VEHICLE DESCRIPTION - Cupra Formentor 1.5 eTSI 150 HK CUV DSG7 1.5 eTSI MHEV



First registration date:
5/2025

VIN:
VSSZZZKM0SR051951

Colour:
Blue Metallic Normal gloss

Mileage (km):
9.939

Gear:
Automatic (7 Gears)

Fuel type:
Hybrid petrol

Body type:
SUV

Number of doors:
5

Drive type:
FWD

Model year:
2024-2024

Engine power:
110 kW

Number of seats:
5

Engine size (cc):
1498

Interior:

VEHICLE DETAILS

Number of keys:
2

Number of license plates:
2

Registration certificate:
Part 1 & 2 present

Service documentation:
No

Inspection date:
01-06-2026

Last service (year/month):

Mileage (km) at last service:

SUMMARY OF THE VEHICLE'S CONDITION

Is the car in a driveable condition:
Yes

Legal tire tread (minimum 1.6 mm):
Yes

WHEELS

TYPE	SEASON	BRAND	POSITION	RIM	SIZE	TREAD
Fitted	Summer tires		Front Left	Alloy rim	18"	5 mm
Fitted	Summer tires		Rear Right	Alloy rim	18"	5 mm
Fitted	Summer tires		Rear Left	Alloy rim	18"	5 mm
Fitted	Summer tires		Front Right	Alloy rim	18"	5 mm

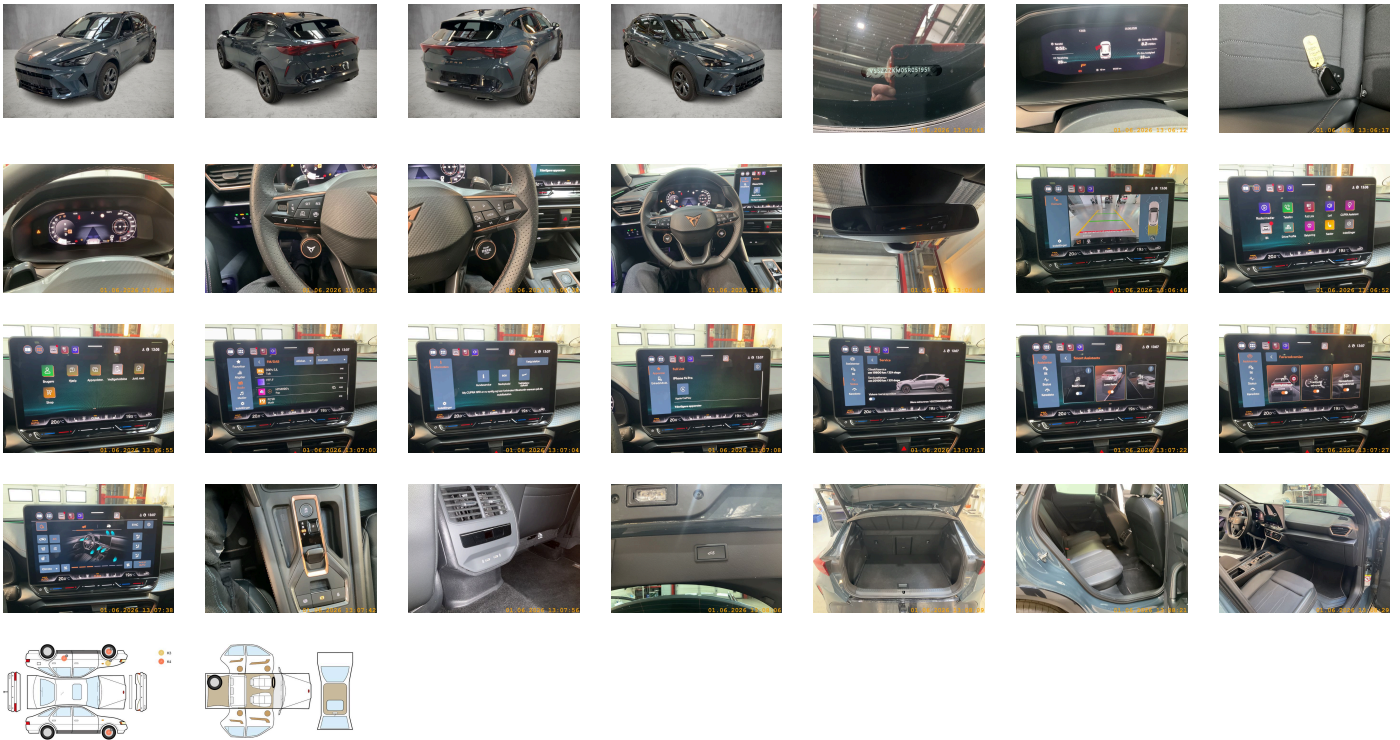
Legal tire tread (minimum 1.6 mm):

Yes

ACCESSORIES



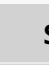





Power windows with comfort operation and circuit breaker, Rear stabilizer bar, With predictive speed limiter, Manually adjustable lumbar support in front seats, Trailer hitch preparation, Wheelbase, Type sign and company logo, Suspension range 05 installation control only- no requirement forecast, Without delivery equipment, Without drawers under front seats, Without fire extinguisher, Without floor mats, Tires 245/45 R18 96W super-low rolling resistance- generation 2 (polymer coating), Variable luggage/load compartment floor, Freely programmable instrument cluster Medium, 7-speed automatic transmission "A7", Without first aid kit and warning triangle, Without vehicle inlet, Navigation system preparation (Baseline), Two reading lights in front- two in rear, Speakers in front and rear, Visual and acoustic seat belt reminder- electric contact in front and rear, Seat trim covers in fabric, 230-V inverter and outlet for Europe, Reduced price package, Without additional front underbody guard, Special price, Battery 420 A (70 Ah), High-beam control, Black Exterior Brightware, Scuff plates in door apertures (illuminated), Breakaway interior rearview mirror- auto-dimming, "Edge" package without SAFELOCK, Part set without country-specific prescriptive standard, Refrigerant R1234yf, Sports bumpers, Without heat accumulator/auxiliary heater, Weight range 4 installation control only- no requirement forecast, Driving on the right, Center armrest in front, With emergency steering support with turn assist, Adaptive cruise control, Rear floor panel module- type 1, Digital radio reception, 3-point seat belts- front, Black roof rails, Without customized installation, Tires without specification of tire brand, In-plant control of self-collection, Unsplit molded headliner, Without electric motor (hybrid), Without special body measures, Advanced driver attention & drowsiness monitor, Disc brakes in front, Belt-driven integrated starter alternator 48 V 110 - 250 A, Breakdown kit, Without partition, Separate daytime running light with automatic headlight control and automat. Coming and Leaving Home feature, Climatronic (3-zone) with air conditioning control panel in rear, Side windows in heat-insulating glass- from B-pillar and rear window dark tinted, Antenna amplifier type 1, Standard climatic zones, With dynamic road sign display, Without mode 3 charging cable, Installation differentiation for transmission DQ381 -- vehicle components --, No special purpose vehicle- standard equipment, Rear shock absorption- basic version 1, 4-cylinder SI engine 1.5 l unit 05E.D, Pedal cluster, Parking brake, Chrome package, Without roof insert (standard roof), Rear window wiper and washer system with intermittent control, Without head-up display, Single-tone horn, Without socket, Door and side trim panel, Rear exhaust tailpipe (standard), Without seat ventilation/massage seat, Airbag on driver and front passenger side- knee airbag on driver/front pass. side- with front pass. airbag deactivat., 3-point seat belt for center rear seat, LongLife Service Regime, Seat heater for front seats separately controlled, Without charging cable, Standard rear seat release, Without special specifications, Without heated washer nozzles, Private emergency call system, Without second battery, Three rear head restraints, With UN-ECE cybersecurity & software update, Front stabilizer bar, Sensor-controlled luggage compartment opener, Exterior mirrors: convex on driver side- convex on front passenger side, Supersports steering wheel with tiptronic- heated, Without additional tires, Wired & Wireless App-Connect, Activated carbon canister (Evaporative Emission Control System (EVAP)), Luggage pockets on backrest, Online service- with OCU- with head unit coding- without engine immobilizer interconnection, Non-smoker's package, Tool kit, Park distance control in front and rear, Unsplit rear seat bench-split folding backrest- with center armrest, Without lane change assist, Standard seats in front, Exterior mirrors- power-folding/adjustable- heated- w/ front passenger exterior mirror lowering function, Without Car2X, Disc brakes in rear, Sun visors with mirror- illuminated- with airbag label on sun visor and B-pillar, Driving profile selection and conventional shock absorber, Basic equipment variant, Front-wheel drive, Type approval country Denmark, Not hot country, Dynamic steering, Without headlamp washer system- with washer fluid level indicator, Without license plate carrier, Operating permit- alteration, Comfort telephony: wireless charging (fast charge) and external antenna connection, Alloy wheels 8j x 18, 4-cylinder gasoline engine 1.5 l/110 kW TSI- base engine: Tj7/N09/T9F- TSI, LED headlamps with lens, Without preparation for VTS (vehicle tracking system), Vehicles with special upgrade measures, Special identification label for EC for M1 passenger vehicles, Comfort sports equipment Formentor, Child seat anchors f. child seat system i-Size- 2x top tether and child seat anchors in front on front passenger side, With welcome light (mirror), Manual in Danish, Infotainment system with scalable module options (Optionsinfotainment- MIB3 model update) version 2, Side airbag in front and rear- with curtain airbag and interaction airbag in front, Rear fog lamp, Service indicator 30 000◆◆km or 2 years (variable), Voice control, No special edition, Without backrest release for front seats, LED rear combination lamp- dynamic turn signal, Brake control system for vehicles with electric drive (ESC and electromechanical brake booster), 3-point seat belts- outer rear with ECE label, Initial standard fuel filling, Antenna for FM reception only- diversity, Emblems, Standard wheel bolts, Exterior mirror housings painted, Without surface protection- with additional transport protection measures, With rear view camera system (type 2), Tire pressure monitoring system, Without gearshift knob/handle, Electronic differential lock XDS- dynamic traction support, Shock absorption in front, Anti-theft alarm system- interior monitoring- backup horn- and towing protection, Regional code " ECE " for radio, Forward collision warning with warning and braking reaction to vehicles- pedestrians and cyclists, Keyless locking and starting system Keyless Advanced without SAFELOCK, 4-link rear suspension, Dynamic headlight range control (self-adjusting while driving), Control of series production, MPV Formentor, Interior ambient lighting- type 2, UWB-capable country and carrier frequency- 433.92 to 434.42 MHz, Hybrid drive system mHEV, Manual height adjustment for front seats, Without nameplate set (without model designation), Preparation for alcohol interlock, Front head restraints, Decorative inserts, External- USB type C data socket(s) and charging socket(s), Fuel system for fuel-injected SI engine, Front fog lamps, Standard battery/alternator capacity, Left-hand drive, Start-stop system with regenerative braking, Instrument cluster- km/h speedometer, Heat-reflecting windshield, Without extended safety system, Without locking and starting systems, Emission standard- WLTP3 M1- N1-//EU6EB, With multifunction camera, Without auxiliary heater/parking heater, Luggage compartment trim- with storage compartments, Standard electronic engine sound, Lane keeping system, Decorative inserts for console, Vehicle class differentiation -5FF-, Standard manufacturing sequence, Windshield wiper intermittent control with light/rain sensor, Equipment options subset for Denmark

PICTURES



Picture viewer: <https://fm.bilsalg.dk/business/picturebrowser?t=full&guid=de515fdf-843f-48d8-92d3-ccd13ebd1bd1&carid=24623842>

OVERVIEW OF DAMAGES AND SHORTAGES

N°	LOCATION	TYPE	SEVERITY	INSURANCE	NOTES	DAMAGE GROUP
1	L. Front Rim	Scratch	C4		Reporting needed	
						
2	L. Rear Door	Dent	C4		Reporting needed	
						
3	R. Front Rim	Scratch	C4		Reporting needed	
						
4	L. Front Quarter Panel, List	Scratch	C3			
						

Severity explanation:

C0 = No damage / C1 = Simple preparation / C2 = Minor preparation needed / C3 = Can be smart repaired / C4 = Repair/spray paint / C5 = Need replacement

ELECTRICAL AND MECHANICAL CONDITION

N°	LOCATION	TYPE	NOTES
1	Is the car drivable	Yes	