

VEHICLE DESCRIPTION - Audi S5 Limousine 3.0 TFSI MHEV Plus



First registration date:
4/2025

VIN:
WAUZZZFU8SN038607

Colour:
Dark gray Metallic Normal gloss

Mileage (km):
22.867

Gear:
Automatic (7 Gears)

Fuel type:
Hybrid petrol

Body type:
Hatchback

Number of doors:
5

Drive type:
4WD

Model year:
2024

Engine power:
270 kW

Number of seats:
5

Engine size (cc):
2998

Interior:
Black Partial leatherette

VEHICLE DETAILS

Number of keys:
2

Number of license plates:
2

Registration certificate:
Part 1 & 2 present

Service documentation:
No

Inspection date:
29-04-2026

Last service (year/month):

Mileage (km) at last service:

SUMMARY OF THE VEHICLE'S CONDITION

Is the car in a driveable condition:
Yes

Legal tire tread (minimum 1.6 mm):
Yes

WHEELS

 TYPE	SEASON	BRAND	POSITION	RIM	SIZE	TREAD
Fitted	Summer tires		Front Left	Alloy rim	19"	5 mm
Fitted	Summer tires		Rear Right	Alloy rim	19"	5 mm
Fitted	Summer tires		Rear Left	Alloy rim	19"	5 mm
Fitted	Summer tires		Front Right	Alloy rim	19"	5 mm

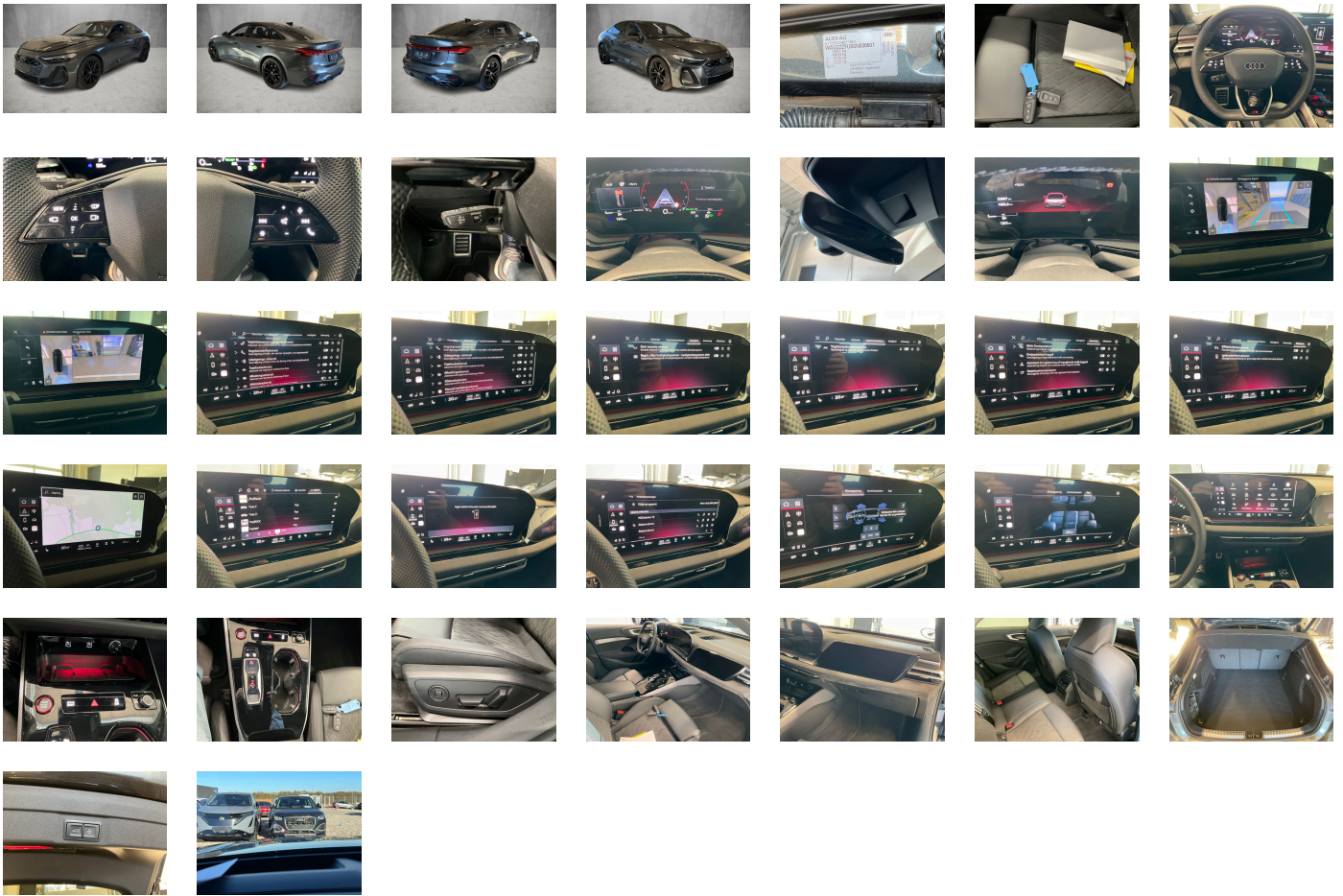
Legal tire tread (minimum 1.6 mm):

Yes

ACCESSORIES

Without memory feature (for Audi/SEAT only), Without steering wheel heating, Standard-production quality, Driving on the right, Audi AG, World equipment, Part set without country-specific prescriptive standard, Type approval country Denmark, Audi Sport wheels- 5-twin-spoke- Black- 8.5J x 19- 245/40 R19 tires, Operating permit-alteration, 6-cylinder SI engine 3.0 l/270 kW TFSI base engine is TH9, Driver attention and fatigue monitor, Regional code " ECE " for radio, Without vehicle inlet, Without mains cable for domestic connector for the e-tron charging system, No special edition, Control of series production, Standard paint coating, Without customized installation, Without additional tank for SCR, S model, Functions-on-demand features online available, Audi Sport/quattro GmbH wheels, Park assist plus, Country group A, Seat belts, No special purpose vehicle- standard equipment, Without preconditioning, Without antenna amplifier, quattro® with sport differential, Without adaptive cruise assist, Acoustic vehicle alerting system, Vehicles without special upgrade measures, Accent surfaces and control buttons- Gloss Black, Without alcohol interlock, Without Car2X, S tronic, Audi connect navigation & infotainment, Audi Application Store and smartphone interface, Audi connect emergency call & service with Audi connect remote & control, SI engine, Data module- Europe, MMI front passenger display, Front cross-traffic assist, Battery 380 A (68 Ah), Surround view cameras, Head-up display, Notchback, Traffic sign-based speed limiter, Left-hand drive, SWIN management, Without charging dock, Without charging system, Standard battery/alternator capacity, Dinamica microfiber/leather combination with rhombus pattern and S embossing, Exterior package- Black, Tech plus, MMI experience pro, Service indicator 30 000 km or 2 years (variable), Interior trims in aluminum look, Sun protection glass- tinted, Ambient lighting package plus, Camera-based traffic sign recognition, Digital Audio Broadcasting, Sport seats- front, Wraparound interior elements in Dinamica microfiber, 6-cylinder SI engine 3.0 l unit 06M.B, Instrument cluster- km/h speedometer, USB interfaces with higher charging capacity, Without garage door opener, Stainless steel pedals and footrest, Door sill trims with aluminum inlays- front- illuminated- S logo, Tires without specification of tire brand, Internal control code, Internal control code, Standard manufacturing sequence, Weight category front axle weight range 11, Special label, Mild hybrid, With special labels safety certificates for Denmark, Fuel tank, Standard rear axle, Tailpipe trims- dark chrome-plated, Without ignition/starter switch locking system- without steering lock, Without special labels, Floor mats- front and rear, Without special color trim, Manual in Danish, Weight range 10 installation control only- no requirement forecast, Standard climatic zones, Fuel system for SI engine with direct injection (FSI), S sport suspension, Special identification label (EU), Tire repair kit, Passenger presence detection, Projection light in the exterior mirrors, Disk brakes- front- 18-inch- brake calipers in Black- S logo, Preparation for trailer hitch, Standard wheel bolts, Without additional front underbody guard, First aid kit with warning triangle and safety vest, Installation parts for six-cylinder engine, Sport leather steering wheel- 3-spoke- flat top and bottom with multifunction and shift paddles, quattro, Initial standard fuel filling, Steering wheel adjustment- manual, Disk brakes- rear- 18-inch- brake calipers in Black, Digital key, Audi drive select, Bumpers- S model, Without additional tires, Omission of model name at the rear, Without electric motor (hybrid), i-Size child seat mounting on the front passenger side and i-Size and top tether on the outer rear seats, Net partition, Without roof insert (standard roof), Front seats- electrically adjustable, Omission of roof rails, Without roll-up sunshade, Rear license plate carrier (ECE), Seat heating- front, Without seat ventilation/massage seat, Luggage compartment lid- electrically opening and closing, Heat-insulating and acoustic glazing for windshield, Swerve assist and front turn assist, Power-operated child safety lock, Side and rear windows in heat-insulating glass, Convenience key without Safelock, Interior mirror- automatically dimming, Airbags- front, front passenger airbag can be deactivated, Emission standard- EU6 EA lambda = 1 WLTP3 M1- N1-I, Window trim strips and attachments- dark, Without special body measures, UWB-capable country and carrier frequency- 433.92 to 434.42 MHz, Vehicle class differentiation -8WH/8WK-, Exterior mirrors: aspherical on driver side- aspherical on front passenger side, Rear spoiler, Decals ROW, Without front spoiler, Inlays- matt brushed aluminum with linear embossing- Anthracite, Rear occupant detection, Front head restraints, Without fire extinguisher, Side airbags- front and rear with head airbag system and interaction airbag- front, Comfort center armrest- front, Black exterior mirror housings, Steering wheel trim in chrome look- S emblem- st. wheel grips in perforated leather and contrasting stitching, "Basic", Lane departure warning with emergency assist, Black door handles, Headlining in cloth- Black, Exterior mirrors- electrically adjustable- heated and folding- automatically dimming on both sides, Electronic immobilizer, Without heat accumulator/auxiliary heater, Upper and lower interior elements with contrasting stitching, Tire pressure loss indicator, 4-way lumbar support for the front seats, Navigation system - High, Proactive occupant protection- front- side and rear, Without mains cable for industrial connector for the e-tron charging system, Without charging cable for public charging (AC)- mode 3, Side assist and exit warning- rear cross-traffic assist and rear turn assist, Matrix function, Matrix LED headlights, Front emergency brake assist, Key for locking system with remote control, Bang & Olufsen 3D Premium Sound System with head restraint loudspeakers, Adaptive cruise control, LED rear lights pro, Headlight cleaning system, Dual-tone horn, Not hot country, Tires 245/40 R19 98Y XL Performance, 3-zone deluxe automatic air conditioning, Without integrated toll system, Belt-driven integrated starter alternator 48 V 110 - 250 A, Sep. daytime running light + rear pos. light w/ auto. headlight control- auto. Coming Home and Leaving Home, Non-smoker's package, Without auxiliary heater/parking heater, Standard wiper arms/blades, Audi virtual cockpit plus, Without additional warning lights, Parking system plus with distance display, Phone compartment with inductive charging function, Comfort package plus, Climate Control package, Basic feature package (for Audi only), MMI experience pro, Assist package Drive and Park, Assist package- protective and warning systems plus, Interior equipment 13, Equipment options subset for Denmark

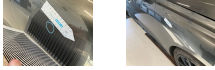
PICTURES



Picture viewer: <https://fm.bilsalg.dk/business/picturebrowser?t=full&guid=b1696d28-bcef-4b97-896d-20eb28c4ce27&carid=24564076>

OVERVIEW OF DAMAGES AND SHORTAGES

N°	LOCATION	TYPE	SEVERITY	INSURANCE	NOTES	DAMAGE GROUP
1	R. Front Quarter Panel	Dent	C3			



Severity explanation:

C0 = No damage / C1 = Simple preparation / C2 = Minor preparation needed / C3 = Can be smart repaired / C4 = Repair/spray paint / C5 = Need replacement

ELECTRICAL AND MECHANICAL CONDITION

N°	LOCATION	TYPE	NOTES
1	Is the car drivable	Yes	