

VEHICLE DESCRIPTION - Audi A5 S Line Plus 2.0 40 TFSI MHEV



First registration date:
4/2025

VIN:
WAUZZZFU9SN018379

Colour:
Gray Metallic Normal gloss

Mileage (km):
11.357

Gear:
Automatic (7 Gears)

Fuel type:
Hybrid petrol

Body type:
Hatchback

Number of doors:
5

Drive type:
FWD

Model year:
2020-2024

Engine power:
150 kW

Number of seats:
5

Engine size (cc):
1984

Interior:

VEHICLE DETAILS

Number of keys:
2

Number of license plates:
2

Registration certificate:
Part 1 & 2 present

Service documentation:
No

Inspection date:
15-05-2026

Last service (year/month):

Mileage (km) at last service:

SUMMARY OF THE VEHICLE'S CONDITION

Is the car in a driveable condition:
Yes

Legal tire tread (minimum 1.6 mm):
Yes

WHEELS

TYPE	SEASON	BRAND	POSITION	RIM	SIZE	TREAD
Fitted	Summer tires		Front Left	Alloy rim	19"	6 mm
Fitted	Summer tires		Rear Right	Alloy rim	19"	6 mm
Fitted	Summer tires		Rear Left	Alloy rim	19"	6 mm
Fitted	Summer tires		Front Right	Alloy rim	19"	6 mm

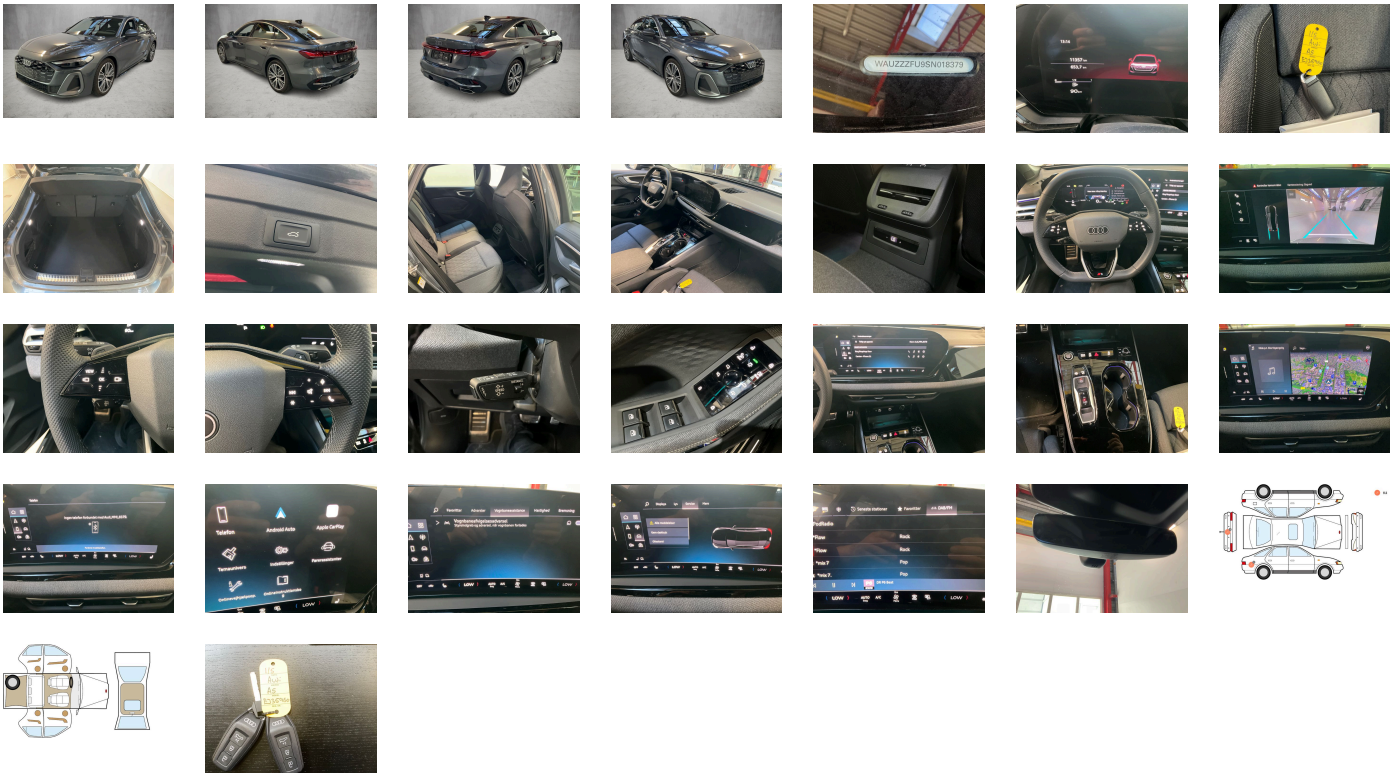
Legal tire tread (minimum 1.6 mm):

Yes

ACCESSORIES





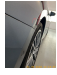


Without memory feature (for Audi/SEAT only), Without steering wheel heating, Standard-production quality, Driving on the right, Audi AG, Equipment 1, Part set without country-specific prescriptive standard, Type approval country Denmark, Operating permit- alteration, 4-cyl. SI eng. 2.0 l/150 kW (16V) turbo FSI- homogen-base eng. TR6/T2A/T2C/ TC3/TI2/T66/T4X/TI2/T5V/TC1/T1F/T4E/T4M, Driver attention and fatigue monitor, Regional code " ECE " for radio, Without vehicle inlet, Without mains cable for domestic connector for the e-tron charging system, No special edition, Control of series production, Standard paint coating, Without customized installation, Without additional tank for SCR, S line, Functions-on-demand features online available, Production wheels, Park assist plus, Country group A, Seat belts, No special purpose vehicle- standard equipment, Without preconditioning, Without antenna amplifier, Without rear differential, Without adaptive cruise assist, Without acoustic vehicle alerting system, Vehicles without special upgrade measures, Accent surfaces and control buttons- Gloss Black, Without alcohol interlock, Without Car2X, 7-speed automatic transmission, Tires 245/40 R19 98Y xl, Audi connect navigation & infotainment, Audi Application Store and smartphone interface, Audi connect emergency call & service with Audi connect remote & control, SI engine, Data module- Europe, Without MMI front passenger display, Front cross-traffic assist, Battery 420 A (75 Ah), Reversing camera, Without head-up display, Notchback, Traffic sign-based speed limiter, Left-hand drive, SWIN management, Without charging dock, Without charging system, Standard battery/alternator capacity, Cascade cloth with rhombus pattern and S emblem, Interior S line with sport seats in cloth- Black, S line exterior, Service indicator 30 000 km or 2 years (variable), Interior trims in aluminum look, Clear glass, Ambient lighting package plus, Camera-based traffic sign recognition, Digital Audio Broadcasting, Sport seats- front, Wraparound interior elements in Cascade cloth, 4-cylinder SI engine 2.0 l unit 06R.A, USB ports with charging function in the first and second seat row, Instrument cluster- km/h speedometer, Without garage door opener, Stainless steel pedals and footrest, Door sill trims with aluminum inlays- front- illuminated- S logo, Tires without specification of tire brand, Equipment package for Denmark, Internal control code, Internal control code, Standard manufacturing sequence, Weight category front axle weight range 9, Special label, Without alternative drive system, With special labels safety certificates for Denmark, Fuel tank, Standard rear axle, Standard exhaust system, Without ignition/starter switch locking system- without steering lock, Without special labels, Floor mats- front and rear, Without special color trim, Manual in Danish, Weight range 7 installation control only- no requirement forecast, Standard climatic zones, Fuel system for SI engine with direct injection (FSI), S sport suspension, Special identification label (EU), Tire repair kit, Passenger presence detection, Projection light in the exterior mirrors, Disk brakes- rear- 16-inch, Disk brakes- front- 17-inch, Preparation for trailer hitch, Standard wheel bolts, Without additional front underbody guard, First aid kit with warning triangle and safety vest, Installation parts for four-cylinder engine, Sport leather steering wheel- 3-spoke- flat top and bottom with multifunction and shift paddles, Front-wheel drive, Initial standard fuel filling, Steering wheel adjustment- manual, Without locking and starting systems, Audi drive select, Bumpers- S line, Without additional tires, Model name at the rear, Without electric motor (hybrid), i-Size child seat mounting on the front passenger side and i-Size and top tether on the outer rear seats, Net partition, Without roof insert (standard roof), Front seats- manually adjustable, Omission of roof rails, Without roll-up sunshade, Rear license plate carrier (ECE), Seat heating- front, Without seat ventilation/massage seat, Luggage compartment lid- electrically opening and closing, Heat-insulating and acoustic glazing for windshield, Swerve assist and front turn assist, Power-operated child safety lock, Remote control key without Safelock, Side and rear windows in heat-insulating glass, Interior mirror- automatically dimming, Airbags- front, front passenger airbag can be deactivated, Emission standard- EU6 EA lambda = 1 WLTP3 M1- N1-I, Window trim strips in aluminum look, Wheels- 5-twin-V-spoke- Graphite Gray- gloss turned finish- 8.0J x 19- 245/40 R19 tires, Without special body measures, UWB-capable country and carrier frequency- 433.92 to 434.42 MHz, Vehicle class differentiation -8WH/8WK-, Exterior mirrors: aspherical on driver side- aspherical on front passenger side, Without rear spoiler, Decals ROW, Without front spoiler, Inlays- matt brushed aluminum with linear embossing- Anthracite, Rear seat alert, Front head restraints, Without fire extinguisher, Side airbags- front with head airbag system and interaction airbag- front, Comfort center armrest- front, Exterior mirror housings in body color, Steering wheel trim in chrome look- S emblem- st. wheel grips in perforated leather and contrasting stitching, "Basic", Lane departure warning, Body-colored door handles, Headlining in cloth- Black, Exterior mirrors- electrically adjustable- heated and folding- automatically dimming on both sides, Electronic immobilizer, Without heat accumulator/auxiliary heater, Upper and lower interior elements with contrasting stitching, Tire pressure loss indicator, 4-way lumbar support for the front seats, Navigation system - High, Without proactive occupant protection for front- side and rear, Without side assist- exit warning- rear cross-traffic assist and rear turn assist, Without mains cable for industrial connector for the e-tron charging system, Without charging cable for public charging (AC)- mode 3, High-beam control, LED headlights plus, Front emergency brake assist, Key for locking system with remote control, Adaptive cruise control, LED rear lights pro, Without headlamp washer system- with washer fluid level indicator, Single-tone horn, Not hot country, 3-zone deluxe automatic air conditioning, Without integrated toll system, Alternator 230 A, Sep. daytime running light + rear pos. light w/ auto. headlight control- auto. Coming Home and Leaving Home, Non-smoker's package, Without auxiliary heater/parking heater, Standard wiper arms/blades, Audi virtual cockpit plus, Without additional warning lights, Audi sound system, Parking system plus with distance display, Phone compartment with inductive charging function, Comfort package, Climate Control package, Basic feature package (for Audi only), MMI experience plus, Assist package Drive and Park, Assist package- protective and warning systems, Interior equipment 9, Equipment options subset for Denmark

PICTURES



Picture viewer: <https://fm.bilsalg.dk/business/picturebrowser?t=full&guid=8a2c6acf-f797-4aa0-9e33-86e045931892&carid=24557497>

OVERVIEW OF DAMAGES AND SHORTAGES

N°	LOCATION	TYPE	SEVERITY	INSURANCE	NOTES	DAMAGE GROUP
1		Mangler			Indlevering af ekstra nøgle+spyd	
2		Mangler			Indlevering nøgle	
3	Rear Bumper	Scratch	C4		Reporting needed	
						
4	R. Rear Quarter Panel	Dent	C4		Reporting needed	
						

Severity explanation:

C0 = No damage / C1 = Simple preparation / C2 = Minor preparation needed / C3 = Can be smart repaired / C4 = Repair/spray paint / C5 = Need replacement

ELECTRICAL AND MECHANICAL CONDITION

N°	LOCATION	TYPE	NOTES
1	Is the car drivable	Yes	