

VEHICLE DESCRIPTION - Audi Q2 S Line 1.5 35 TFSI



First registration date:
4/2025

VIN:
WAUZZZGA7SA019414

Colour:
Gray Metallic Normal gloss

Mileage (km):
16.717

Gear:
Automatic (7 Gears)

Fuel type:
Gasoline

Body type:
SUV

Number of doors:
5

Drive type:
FWD

Model year:
2020

Engine power:
110 kW

Number of seats:
5

Engine size (cc):
1498

Interior:

VEHICLE DETAILS

Number of keys:
2

Number of license plates:
2

Registration certificate:
Part 1 & 2 present

Service documentation:
No

Inspection date:
01-06-2026

Last service (year/month):

Mileage (km) at last service:

SUMMARY OF THE VEHICLE'S CONDITION

Is the car in a driveable condition:
Yes

Legal tire tread (minimum 1.6 mm):
Yes

WHEELS

TYPE	SEASON	BRAND	POSITION	RIM	SIZE	TREAD
Fitted	Summer tires		Front Left	Alloy rim	17"	6 mm
Fitted	Summer tires		Rear Right	Alloy rim	17"	6 mm
Fitted	Summer tires		Rear Left	Alloy rim	17"	6 mm
Fitted	Summer tires		Front Right	Alloy rim	17"	6 mm

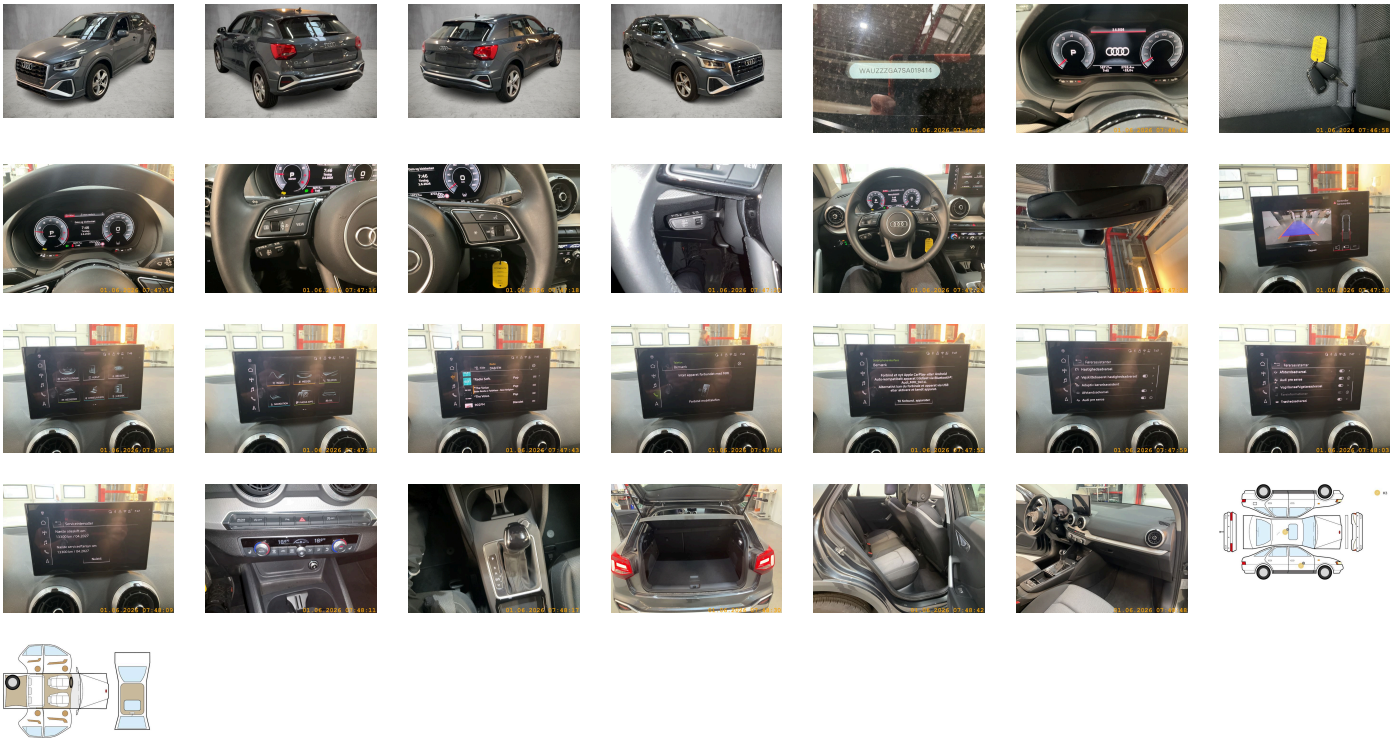
Legal tire tread (minimum 1.6 mm):

Yes

ACCESSORIES



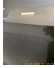

Standard-production quality, Without light control, No self-collection, Without heat accumulator/auxiliary heater, Fuel system for fuel-injected SI engine, Initial standard fuel filling, Navigation preparation, Side airbags- front and head airbag system, Ambient Lighting package, Without headlamp washer system, Exhaust tailpipes, Without customized installation, Heat-insulating and acoustic glazing for windshield with Gray tinted strip, Luggage compartment mat, No special edition, Equipment package for Denmark, Control of special edition prices, Labels in English and German, Rear floor panel module- type 7, Interior with sport seats in cloth-Black, Box, Roof spoiler, Service indicator 30 000 km or 2 years (variable), Operating permit- alteration, Smartphone interface, Head restraints- front, Disk brakes- front- 15-inch, Child-proof lock- electrically operated, Deluxe automatic air conditioning, Electronic Stabilization Control ESC, Regional code " ECE " for radio, Alternator 140 A, Standard suspension, Standard climatic zones, Gearshift/selector lever handle, MMI radio plus, Transit coating (type 1), Q2 S line, Roof without glass insert, Two-tone horn, Without extended safety system, Vehicle tool kit, Non-smoker's package, Audi phone box light, Door sill trims with aluminum inlays- front-illuminated- S logo, Exterior mirrors on the right- (large field of view)- convex, Interior trims in aluminum look, Camera-based traffic sign recognition, Weight range 3 installation control only- no requirement forecast, Remote control key- without Safelock, Without neck heating, Audi virtual cockpit, Adhesive film, Rear seat backrest-folding, Without additional front underbody guard, Without preparation for VTS (vehicle tracking system), ISOFIX child seat mounting for the front passenger seat, 5 doors, Extended and proactive pedestrian and cyclist protection, Without special body measures, Without vehicle inlet, Comfort center armrest- front, Seat heating- front, Basic equipment variant, Left exterior mirror- aspherical, Suspension range 03 installation control only- no requirement forecast, First-aid kit with warning triangle, Tires 215/55 R17 94V, Parking system plus, Rear trim panel (ECE), Not hot country, Front stabilizer bar, With multifunction camera, Window controls, Disk brakes- rear- 15-inch, 4-way lumbar support for the front seats, Comfort package plus, Standard rear seat release, Without backrest release for front seats, Standard trim strips, Wheelbase, Without decorative films/emblems, Assist package Park, Carrier frequency 433.92 MHz-434.42 Mhz, Left-hand drive, Vehicles with special upgrade measures, Audi connect navigation & infotainment, Without lane change assist, Without rear stabilizer bar, Audi connect remote & control (for MMI navigation plus), Without leather, Exterior mirror housings in body color, Headlining in cloth in specific color, 6 loudspeakers, Without folding table on front seat backrest, Front license plate carrier, Brake pad wear indicator, Without alternative drive system, Preparation for trailer hitch, Wheels- 5-arm star- 7.0J x 17- 215/55 R17 tires, Without auxiliary heater/parking heater, Without additional tires, Standard, Separate daytime running light, Standard pedal cluster, Activated carbon canister (Evaporative Emission Control System (EVAP)), Intention cloth, Inlays- diamond paint finish- Silver Gray, 4-cylinder SI engine 1.5 l/110 kW TSI base engine is TJ7/N09/T9F/T57/T0D, Advanced driver attention & drowsiness monitor, Shock absorption in front, Rear and side windows with heat-insulating glazing, Electronic immobilizer, Progressive steering, Adaptive cruise control, Driving on the right, Reversing camera, Audi AG, Sideblades in body color, Without charging cable, Interior mirror- automatically dimming- frameless, Without Storage and Luggage Compartment package and 12V socket in the rear, Floor mats- front and rear, Audi drive select, Sport seats- front, Special identification label (EU), ISOFIX and top tether for outer rear seats, Rear fog lamps, Exterior mirrors- electrically adjustable- heated and folding- automatically dimming on both sides, Without refrigerator/glove compartment cooling system, Digital Audio Broadcasting, Omission of roof rails, ECO function, Without wind deflector, Internal control code, Without antenna amplifier, With special labels safety certificates for Denmark, Internal control code, Equipment package for Denmark, S tronic, Without special color trim, Rear window wiper and washer system with intermittent control, Tire pressure loss indicator, Manual luggage compartment lid, Instrument cluster- km/h speedometer, Lane departure warning, Tire repair kit, Without electric motor (hybrid), Production wheels, Standard battery/alternator capacity, Airbags- front, front passenger airbag can be deactivated, Without fire extinguisher, Type approval country Denmark, Front-wheel drive, Without head-up display, Vehicle class differentiation -GA0-, Internal control code, Model name as per new output designation, Three rear head restraints, Without partition, Installation differentiation for transmission DQ200 -- vehicle components --, Refrigerant R1234yf, Standard rear axle, Part set without country-specific prescriptive standard, Control of series production, 4-cylinder SI engine 1.5 l unit 05E.D, No special purpose vehicle- standard equipment, Front passenger seat- height-adjustable, LongLife Service Regime, SWIN management, Start-stop system with recuperation, Standard wheel bolts, Seat belt reminder, Rear lights, SI engine, Manual in Danish, Tires without specification of tire brand, Audi connect emergency call & service, Standard manufacturing sequence, LED headlights, Emission standard- WLTP3 M1- N1-l/EU6EB, Bumpers- S line in full paint finish (body color), Leather steering wheel- 3-spoke with multifunction plus, Battery 420 A (70 Ah), Washer fluid level indicator, Hold assist, Audi pre sense front for adaptive cruise control, N/A

PICTURES



Picture viewer: <https://fm.bilsalg.dk/business/picturebrowser?t=full&guid=61f080a4-deff-4ebd-9a2d-ba2464b68ed7&carid=24451509>

OVERVIEW OF DAMAGES AND SHORTAGES

N°	LOCATION	TYPE	SEVERITY	INSURANCE	NOTES	DAMAGE GROUP
1	Roof	Dent	C3			
						
2	R. Front Door	Scratch	C3			
						

Severity explanation:

C0 = No damage / C1 = Simple preparation / C2 = Minor preparation needed / C3 = Can be smart repaired / C4 = Repair/spray paint / C5 = Need replacement

ELECTRICAL AND MECHANICAL CONDITION

N°	LOCATION	TYPE	NOTES
1	Is the car drivable	Yes	