

VEHICLE DESCRIPTION - Škoda Karoq Selection 1.5 TSI



First registration date:
3/2025

VIN:
TMBJR7NU2S5047471

Colour:
White Normal gloss

Mileage (km):
12.049

Gear:
Automatic (7 Gears)

Fuel type:
Gasoline

Body type:
SUV

Number of doors:
5

Drive type:
FWD

Model year:
2022

Engine power:
110 kW

Number of seats:
5

Engine size (cc):
1498

Interior:

VEHICLE DETAILS

Number of keys:
2

Number of license plates:
2

Registration certificate:
Part 1 & 2 present

Service documentation:
No

Inspection date:
07-04-2026

Last service (year/month):

Mileage (km) at last service:

SUMMARY OF THE VEHICLE'S CONDITION

Is the car in a driveable condition:
Yes

Legal tire tread (minimum 1.6 mm):
Yes

WHEELS

TYPE	SEASON	BRAND	POSITION	RIM	SIZE	TREAD
Fitted	Summer tires		Front Left	Alloy rim	18"	5 mm
Fitted	Summer tires		Rear Right	Alloy rim	18"	5 mm
Fitted	Summer tires		Rear Left	Alloy rim	18"	5 mm
Fitted	Summer tires		Front Right	Alloy rim	18"	5 mm

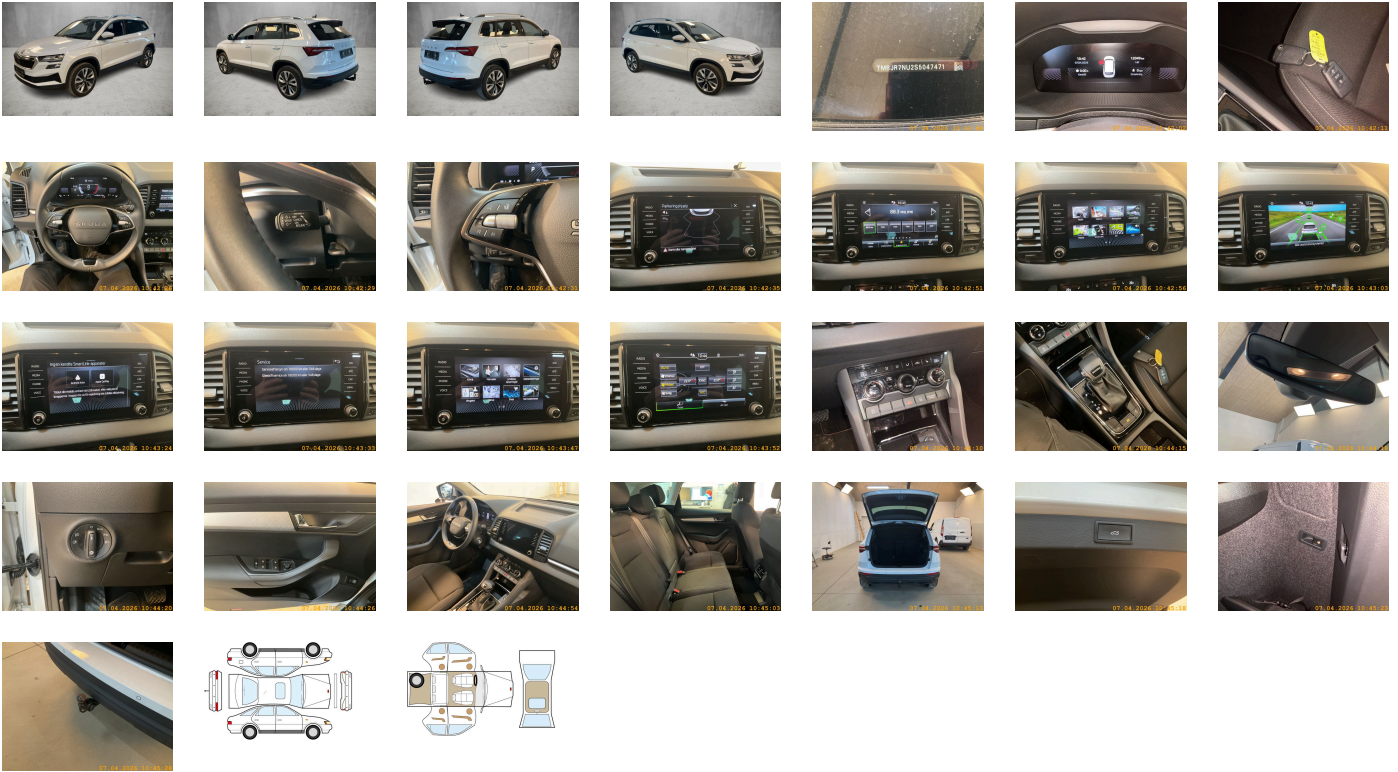
Legal tire tread (minimum 1.6 mm):

Yes

ACCESSORIES

Driving on the right, Comfort equipment, Part set without country-specific prescriptive standard, Type approval country Denmark, Operating permit- alteration, Alloy wheels "PROCYON" 7J x 18" - 4 pcs, 4-cylinder SI engine 1.5 l/110 kW TSI base engine is TJ7/N09/T9F/T57/T0D, Without ECO function, Without emblem package, Remote Access / Remote Access + Online Infotainment, Advanced driver attention & drowsiness monitor, Regional code " ECE " for radio, Without vehicle inlet, No special edition, Standard paint coating, Basic equipment variant, No special purpose vehicle- standard equipment, Standard electronic engine sound, Shock absorption in front, 7-speed automatic transmission, Tires 215/50 R18 92W, Without bracket, Curb weight range 1, Rear axle weight- type 1, Battery 420 A (70 Ah), Without camera systems/accident sensors, Refrigerant R1234yf, MPV, Left-hand drive, Suspension range 10 installation control only- no requirement forecast, Adapter, With UNECE CS (R155) without SU (R156), Standard battery/alternator capacity, Emergency call system eCall+, 4-cylinder SI engine 1.5 l unit 05E.D, Design Selection LOFT Upholstery in fabric, Tow bar swiveling- el. unlockable and with adaptor, Storage compartment package 3, LongLife Service Regime, Voice control, Service indicator 30 000 km or 2 years (variable), Chrome package, With multifunction camera, Without add. lights (interior lighting), Traffic sign recognition, DAB - Digital radio reception, Standard seats in front, Rear shock absorption- chassis with increased ride height, Hill start assist, Parking brake, Mechanical rear seat release, Instrument cluster- km/h speedometer, External- USB type C- only data socket(s), Standard pedal cluster, Extended and proactive pedestrian protection, Tires without specification of tire brand, Remote Access 3 years, Front stabilizer bar, 4 doors, Without rear stabilizer bar, Wheelbase, Installation differentiation for transmission DQ200 -- vehicle components --, Standard manufacturing sequence, Without alternative drive system, Nameplate set in basic style, Standard rear axle, Rear exhaust tailpipe (standard), Without floor mats, Manual in Danish, Weight range 7 installation control only- no requirement forecast, Standard climatic zones, Electronic stability control (ESC), Fuel system for fuel-injected SI engine, Special identification label for EC for M1 passenger vehicles, Activated carbon canister (Evaporative Emission Control System (EVAP)), Breakdown kit, Standard air cleaner, Trailer hitch mechanically swiveling and power-detachable, Aero hubcaps black, Speed-related variable steering assist (Servotronic), Standard wheel bolts, Without additional front underbody guard, Tool kit, Without folding table on front seat backrest, Front-wheel drive, Disc brakes in front, Initial standard fuel filling, Without delivery equipment, Additional exterior noise suppression, Disc brakes in rear, 2 spoke multi-function leather steering wheel with heating and with DSG paddles, Without "drive select", Standard bumpers, Fuel filler cap, Without electric motor (hybrid), Child seat anchors for child seat system ISOFIX, Without partition, Without roof insert (standard roof), Without luggage/load compartment floor, Without child seat anchora in front (ISOFIX), Without backrest release for front seats, Door and side trim panel, High adjustable driver and passenger seat, Unsplit rear seat bench- split folding backrest- with center armrest, Without storage compartments in trunk, 3-point seat belts in front- with tensioner and height adjustment, Bright roof rails, 3rd rear headrest, Without additional noise suppression measures for passenger compartment, Without load-through hatch, 3-point seat belts- outer rear with ECE label, Heated front seats, Virtual pedal, Heat-reflecting windshield, Manual child safety lock, "KESSY FULL" without SAFE system, "SUNSET", Inside rear view mirror automatically dimming, Rear floor panel module- type 7, Power windows with comfort operation and circuit breaker, Driver knee airbag, Emission standard- WLTP3 M1- N1-//EU6EB, Curtain airbags and side airbags front, Bright decorative trims, Without special body measures, Carrier frequency 433.92 MHz-434.42 Mhz, Rear spoiler, Transport protection film with additional transport protection measures, Folding grab handles- multi-piece, Right exterior mirror- convex, Left exterior mirror- convex, Sun visors with illuminated vanity mirror on driver and front passenger side, Front head restraints, Wheel arches, Front armrest "JUMBO BOX", Exterior mirror housings and various add-on parts in body color, Without decorative films/emblems, Lane Assist (without HOD), Radiator grille, Forward collision warning incl. autonomous emergency braking- for adaptive cruise control "high", Without tie down straps/net/pocket, Without mud flap, Gearshift knob/handle in leather, Luggage compartment floor covering in flat needle-punched nonwoven, Without interior light in footwell, Exterior mirrors- auto-dimming- power-folding/adjustable/heated, Electronic immobilizer, 12-volt socket in luggage boot, Without heat accumulator/auxiliary heater, Freely programmable instrument cluster Basic, Tyre pressure monitoring, Vehicle class differentiation -5EP-, Driver and passenger seat with lumbar support, Start-stop system with regenerative braking, Door sills (front), Glasses storage compartment, Decorative inserts, Radio Bolero, Without extended safety system, Park distance control system (parking sensors rear), Without lane change assist, Infotainment Bolero/Amundsen/Columbus (MIB3), Alternator 140 A, Without light control, LED headlamps, Separate daytime running light with automatic headlight control and manual Coming and Leaving Home feature, Rear window wiper and washer system with intermittent control, Windshield wiper intermittent control with light/rain sensor, Key for locking system with remote control, Headlight range control, Additional 4 loudspeakers rear, Reading light in front, Rear fog lamp, Adaptive cruise control (with "follow-to-stop") and speed limiter, LED rear combination lamp- variable lighting functions- special styling, Front fog lights, Washer fluid level indicator, Headlamp washer system, Two-tone horn, Antenna for FM reception only- diversity, Not hot country, Climatronic with impact pressure control- CFC-free, Without additional malfunction display, Non-smoker's package, Without supertone system and tone sequence control, Without auxiliary heater/parking heater, Passenger seat-belt warning light (for all passengers), Additional retro-reflectors (door area), Without heated washer nozzles, Brake pad wear indicator, "SMART LINK" (wired and wireless), Mobile phone interface, Operating voltage 12 V, Equipment options subset for Denmark

PICTURES



Picture viewer: <https://fm.bilsalg.dk/business/picturebrowser?t=full&guid=768e2595-2241-4b4f-92a6-eec2296d6732&carid=24386510>

OVERVIEW OF DAMAGES AND SHORTAGES

No damages or shortages

ELECTRICAL AND MECHANICAL CONDITION

N°	LOCATION	TYPE	NOTES
1	Is the car drivable	Yes	