

**VEHICLE DESCRIPTION - Cupra Formentor 1.5 eTSI 150 HK CUV DSG7 1.5 eTSI MHEV**



**First registration date:**  
3/2025

**VIN:**  
VSSZZZKM7SR051624

**Colour:**  
Blue Normal gloss

**Mileage (km):**  
6.713

**Gear:**  
Automatic (7 Gears)

**Fuel type:**  
Hybrid petrol

**Body type:**  
SUV

**Number of doors:**  
5

**Drive type:**  
FWD

**Model year:**  
2024

**Engine power:**  
110 kW

**Number of seats:**  
5

**Engine size (cc):**  
1498

**Interior:**

**VEHICLE DETAILS**

**Number of keys:**  
2

**Number of license plates:**  
2

**Registration certificate:**  
Part 1 & 2 present

**Service documentation:**  
No

**Inspection date:**  
10-04-2026

**Last service (year/month):**


**Mileage (km) at last service:**

**SUMMARY OF THE VEHICLE'S CONDITION**

**Is the car in a driveable condition:**  
Yes

**Legal tire tread (minimum 1.6 mm):**  
Yes

## WHEELS

 TYPE	SEASON	BRAND	POSITION	RIM	SIZE	TREAD
Fitted	Summer tires		Front Left	Alloy rim	18"	6 mm
Fitted	Summer tires		Rear Right	Alloy rim	18"	6 mm
Fitted	Summer tires		Rear Left	Alloy rim	18"	6 mm
Fitted	Summer tires		Front Right	Alloy rim	18"	6 mm

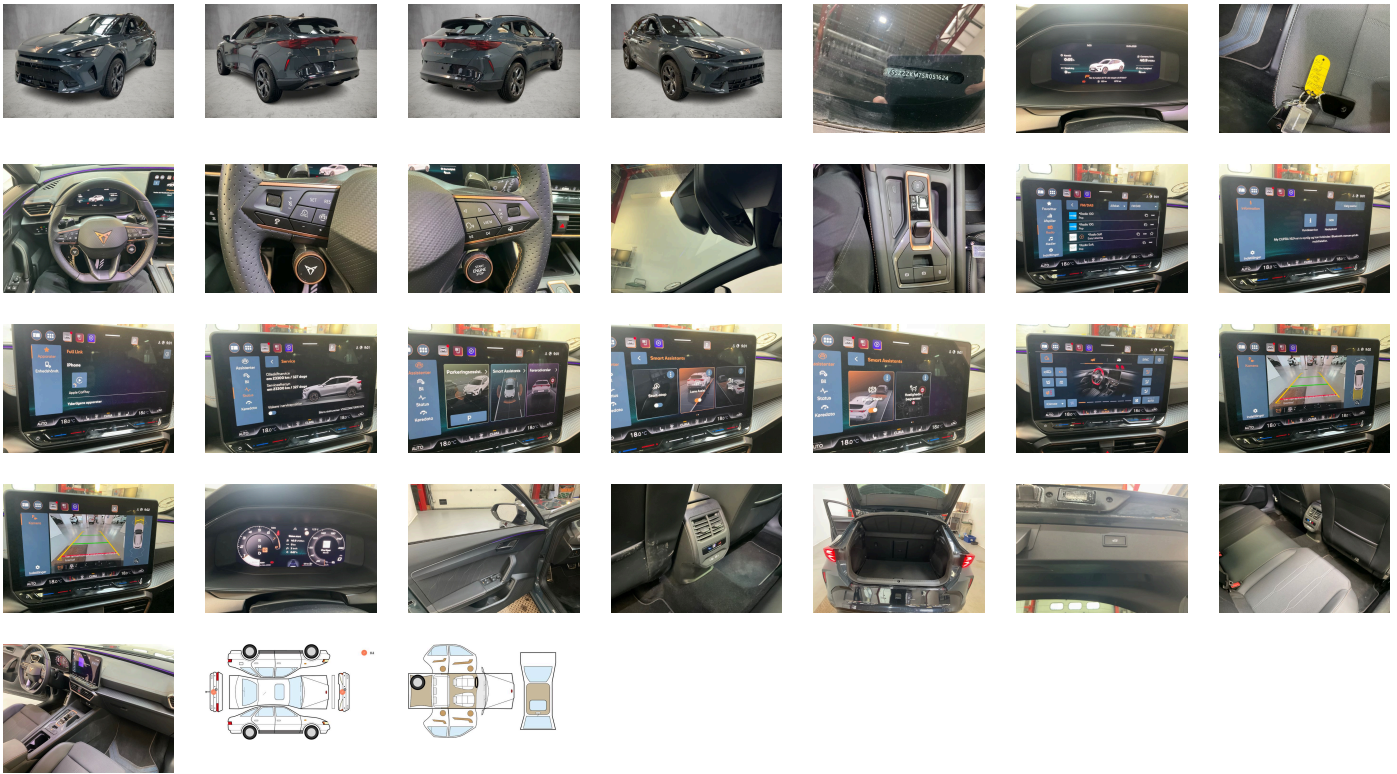
**Legal tire tread (minimum 1.6 mm):**

Yes

## ACCESSORIES

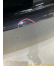



Driving on the right, In-plant control of self-collection, Comfort sports equipment Formentor, Part set without country-specific prescriptive standard, Type approval country Denmark, Alloy wheels 8J x 18, Operating permit- alteration, 4-cylinder gasoline engine 1.5 l/110 kW TSI- base engine: TJ7/N09/T9F- TSI, Online service- with OCU- with head unit coding- without engine immobilizer interconnection, Advanced driver attention & drowsiness monitor, Regional code " ECE " for radio, Without vehicle inlet, Without charging cable, No special edition, Control of series production, Without customized installation, Basic equipment variant, No special purpose vehicle- standard equipment, Antenna amplifier type 1, Standard electronic engine sound, Vehicles with special upgrade measures, Preparation for alcohol interlock, Without Car2X, Shock absorption in front, 7-speed automatic transmission "A7", Battery 420 A (70 Ah), Tires 245/45 R18 96W super-low rolling resistance- generation 2 (polymer coating), With rear view camera system (type 2), Climatronic (3-zone) with air conditioning control panel in rear, Refrigerant R1234yf, Without head-up display, MPV Formentor, With predictive speed limiter, Left-hand drive, Suspension range 05 installation control only- no requirement forecast, With UN-ECE cybersecurity & software update, Standard battery/alternator capacity, Private emergency call system, Seat trim covers in fabric, 4-cylinder SI engine 1.5 l unit 05E.D, Reduced price package, LongLife Service Regime, Voice control, Service indicator 30 000 km or 2 years ( variable ), Chrome package, With multifunction camera, Without drawers under front seats, Interior ambient lighting- type 2, With dynamic road sign display, Digital radio reception, Standard seats in front, Decorative inserts for console, Special price, Parking brake, Standard rear seat release, Instrument cluster- km/h speedometer, External- USB type C data socket(s) and charging socket(s), Pedal cluster, Scuff plates in door apertures (illuminated), Tires without specification of tire brand, "Edge" package without SAFELock, Front stabilizer bar, Rear stabilizer bar, Wheelbase, Standard manufacturing sequence, Installation differentiation for transmission DQ381 -- vehicle components --, Hybrid drive system mHEV, Without nameplate set (without model designation), 4-link rear suspension, Rear exhaust tailpipe (standard), Without floor mats, Manual in Danish, Weight range 4 installation control only- no requirement forecast, Standard climatic zones, Without special specifications, Brake control system for vehicles with electric drive (ESC and electromechanical brake booster), Fuel system for fuel-injected SI engine, Special identification label for EC for M1 passenger vehicles, Activated carbon canister (Evaporative Emission Control System (EVAP)), Breakdown kit, Rear shock absorption- basic version 1, With welcome light (mirror), Disc brakes in rear, Trailer hitch preparation, Dynamic steering, Standard wheel bolts, Without additional front underbody guard, Tool kit, Without first aid kit and warning triangle, Front-wheel drive, Electronic differential lock XDS- dynamic traction support, Disc brakes in front, Initial standard fuel filling, Without delivery equipment, Vehicle class differentiation -5FF-, Without locking and starting systems, Driving profile selection and conventional shock absorber, Sports bumpers, Supersports steering wheel with tiptronic- heated, Without additional tires, Type sign and company logo, Without electric motor (hybrid), Child seat anchors f. child seat system i-Size- 2x top tether and child seat anchors in front on front passenger side, Without partition, 3-point seat belt for center rear seat, Without roof insert (standard roof), Variable luggage/load compartment floor, Without backrest release for front seats, Door and side trim panel, Manual height adjustment for front seats, Unsplit rear seat bench- split folding backrest- with center armrest, 3-point seat belts- front, Black roof rails, Three rear head restraints, 3-point seat belts- outer rear with ECE label, Without license plate carrier, Seat heater for front seats separately controlled, Without seat ventilation/massage seat, Sensor-controlled luggage compartment opener, Heat-reflecting windshield, With emergency steering support with turn assist, Side windows in heat-insulating glass- from B-pillar and rear window dark tinted, Keyless locking and starting system Keyless Advanced without SAFELock, Breakaway interior rearview mirror- auto-dimming, Rear floor panel module- type 1, Power windows with comfort operation and circuit breaker, Airbag on driver and front passenger side- knee airbag on driver/front pass. side- with front pass. airbag deactivated., Luggage pockets on backrest, Emission standard- WLTP3 M1- N1-l//EU6EB, Black decorative trims, Luggage compartment trim- with storage compartments, Without special body measures, UWB-capable country and carrier frequency- 433.92 to 434.42 MHz, Exterior mirrors: convex on driver side- convex on front passenger side, Without surface protection- with additional transport protection measures, Decorative inserts, Sun visors with mirror- illuminated- with airbag label on sun visor and B-pillar, Front head restraints, Without fire extinguisher, Side airbag in front and rear- with curtain airbag and interaction airbag in front, Center armrest in front, Exterior mirror housings painted, Emblems, Lane keeping system, Unsplit molded headliner, Without gearshift knob/handle, Exterior mirrors- power-folding/ adjustable- heated- w/ front passenger exterior mirror lowering function, Anti-theft alarm system- interior monitoring- backup horn- and towing protection, Without socket, Without heat accumulator/auxiliary heater, Without preparation for VTS (vehicle tracking system), Freely programmable instrument cluster Medium, Tire pressure monitoring system, Start-stop system with regenerative braking, Manually adjustable lumbar support in front seats, Navigation system preparation (Baseline), Without extended safety system, Park distance control in front and rear, Without lane change assist, Without mode 3 charging cable, Infotainment system with scalable module options (Optionsinfotainment- MIB3 model update) version 2, Without second battery, High-beam control, LED headlamps with lens, Forward collision warning with warning and braking reaction to vehicles- pedestrians and cyclists, Rear window wiper and washer system with intermittent control, Windshield wiper intermittent control with light/rain sensor, Dynamic headlight range control (self-adjusting while driving), Speakers in front and rear, Two reading lights in front- two in rear, Rear fog lamp, Adaptive cruise control, LED rear combination lamp- dynamic turn signal, Front fog lamps, Without headlamp washer system- with washer fluid level indicator, Single-tone horn, Antenna for FM reception only- diversity, Not hot country, Belt-driven integrated starter alternator 48 V 110 - 250 A, Separate daytime running light with automatic headlight control and automat. Coming and Leaving Home feature, Non-smoker's package, Without auxiliary heater/parking heater, Visual and acoustic seat belt reminder- electric contact in front and rear, Without heated washer nozzles, Wired & Wireless App-Connect, Comfort telephony: wireless charging (fast charge) and external antenna connection, 230-V inverter and outlet for Europe, Equipment options subset for Denmark

**PICTURES**



**Picture viewer:** <https://fm.bilsalg.dk/business/picturebrowser?t=full&guid=a8581b40-b637-4885-84b6-a00493958478&carid=24215706>

## OVERVIEW OF DAMAGES AND SHORTAGES

N°	LOCATION	TYPE	SEVERITY	INSURANCE	NOTES	DAMAGE GROUP
1	Front Bumper, Spoiler	Scratch	C4		Reporting needed	
						
2	Rear Bumper, Spoiler	Scratch	C4		Reporting needed	
						

Severity explanation:

C0 = No damage / C1 = Simple preparation / C2 = Minor preparation needed / C3 = Can be smart repaired / C4 = Repair/spray paint / C5 = Need replacement

## ELECTRICAL AND MECHANICAL CONDITION

N°	LOCATION	TYPE	NOTES
1	Is the car drivable	Yes	