

**VEHICLE DESCRIPTION - Seat Arona Dynamic FR 1.0 TSI**



**First registration date**  
2/2025

**VIN:**  
VSSZZKJ2SR515909

**Colour:**  
Black Metallic Normal gloss

**Mileage (km):**  
15.263

**Gear:**  
Automatic (7 Gears)

**Fuel type:**  
Gasoline

**Body type:**  
SUV

**Number of doors:**  
5

**Drive type:**  
FWD

**Model year:**  
2021-2025

**Engine power:**  
85 kW

**Number of seats:**  
5

**Engine size (cc)**  
999

**Interior:**

**VEHICLE DETAILS**

**Number of keys:**  
2

**Number of license plates:**  
2

**Registration certificate:**  
Part 1 & 2 present

**Service documentation:**  
No

**Inspection date:**  
26-02-2026

**Last service (year/month):**

**Mileage (km) at last service:**

**SUMMARY OF THE VEHICLE'S CONDITION**

**Is the car in a driveable condition:**  
Yes

**Legal tire tread (minimum 1.6 mm):**  
Yes

## WHEELS

 TYPE	SEASON	BRAND	POSITION	RIM	SIZE	TREAD
Fitted	Winter tires		Front Left	Alloy rim	17"	5 mm
Fitted	Winter tires		Front Right	Alloy rim	17"	5 mm
Fitted	Winter tires		Rear Left	Alloy rim	17"	5 mm
Fitted	Winter tires		Rear Right	Alloy rim	17"	5 mm
Extra Wheel	Summer tires		Front Left	No rim	17"	6 mm
Extra Wheel	Summer tires		Front Right	No rim	17"	6 mm
Extra Wheel	Summer tires		Rear Left	No rim	17"	6 mm
Extra Wheel	Summer tires		Rear Right	No rim	17"	6 mm

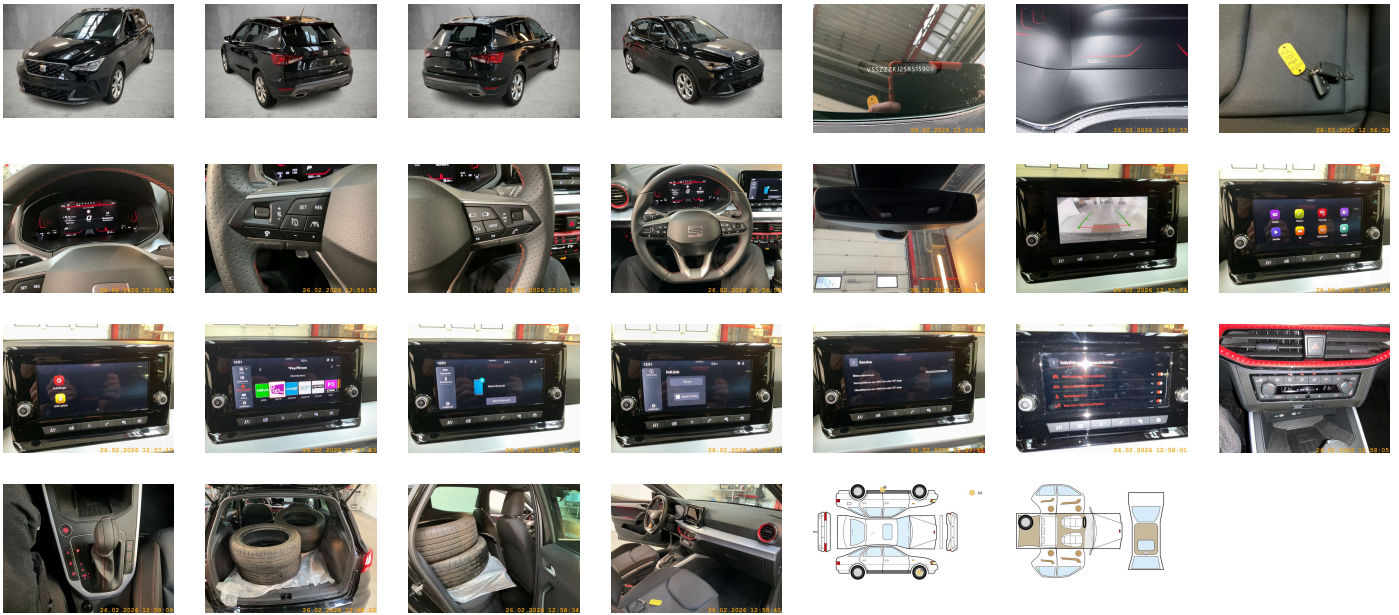
**Legal tire tread (minimum 1.6 mm):**

Yes

## ACCESSORIES





Driving on the right, "Standard Plus" version, In-plant control of self-collection, Top sports equipment, Part set without country-specific prescriptive standard, Type approval country Denmark, Operating permit- alteration, 3-cylinder gasoline engine 1.0 l/85 kW- TSI base engine: TJ4- "TSI", ECO function, Online service- with OCU- without head unit coding- without engine immobilizer interconnection, Advanced driver attention & drowsiness monitor, Regional code " ECE " for radio, No special edition, Control of series production, Standard paint coating, Without customized installation, Variant, No special purpose vehicle- standard equipment, Vehicles with special upgrade measures, Without applications, Shock absorption in front, 7-speed automatic transmission "A7", Entry-level infotainment system radio upgrade (UNECE), Battery 320 A (49 Ah), Tires 205/55 R17 91V super-low rolling resistance- generation 2, With rear view camera system (type 1), Refrigerant R1234yf, LED license plate lighting, MPV, Left-hand drive, Suspension range 30 installation control only- no requirement forecast, With UNECE CS (R155) without SU (R156), Pan-European emergency call service, Seat trim covers in fabric, Connectivity Box: wireless charging station for mobile phone, Vision Plus package: Park Assist with rear view camera system, Safe & Driving package XL (in combination with "Media System"), Keyless locking and starting system Keyless Access without SAFELock, Interior package: double floor- drawer under right seat- storage compartment under left seat- front center armrest, SEAT Full LED, Roof painted in body color, Reduced price package, LongLife Service Regime, Without voice control, Service indicator 30 000 km or 2 years ( variable ), Chrome package, With multifunction camera, Drawers under front seats, Interior ambient lighting- type 1, With dynamic road sign display, Digital radio reception, Standard seats in front, Special price, Special control, 3-cylinder SI engine 1.0 l unit 05C.B, Rear shock absorption, Hill start assist, Instrument cluster- km/h speedometer, External- USB type C- only data socket(s), Standard pedal cluster, Extended and proactive pedestrian and cyclist protection, Tires without specification of tire brand, Sentinel package: (Style: power-adjustable and heated exterior mirrors), Front stabilizer bar, 4 doors, Wheelbase, Installation differentiation for transmission DQ200 -- vehicle components --, Standard manufacturing sequence, Without alternative drive system, Nameplate set, Standard rear axle, Rear exhaust tailpipe (standard), Without floor mats, Without special color trim, Manual in Danish, Weight range 9 installation control only- no requirement forecast, Standard climatic zones, Rear overhang- short, Without special specifications, Electronic stability control (ESC), Fuel system for fuel-injected SI engine (tropicalized), Antifreeze up to -25 degree Celsius tolerance up to -30 degree C, Without trailer hitch, Special identification label for EC for M1 passenger vehicles, Activated carbon canister (Evaporative Emission Control System (EVAP)), Breakdown kit, Disc brakes in rear (Geomet D), Standard air cleaner, Trims for alloy wheels, Power steering, Standard wheel bolts, Without additional front underbody guard, Tool kit, Vehicle class differentiation -6F0-, Without first aid kit and warning triangle, Front-wheel drive, Electronic differential lock XDS- dynamic traction support, Disc brakes in front (Geomet D), Initial standard fuel filling, Without delivery equipment, Axial and vertical adjustable steering column, Leather-wrapped multi-function sports steering wheel with tiptronic, Driving profile selection and conventional shock absorber, Comfort bumper- with chrome molding, Standard design, Fresh air intake system with combinationfilter, Without additional tires, Type sign and company logo, Child seat anchors for child seat system ISOFIX, 3-point seat belt for center rear seat, Without roof insert (standard roof), Plane luggage/load compartment floor in rear, Without backrest release for front seats, Door and side trim panel, Manual height adjustment for front seats, Unsplit rear seat bench- split folding backrest, Mounting fixture in luggage compartment, 3-point seat belts in front- with belt clamping device- without height adjustment, Three rear head restraints, Bright roof rails, Luggage compartment cover- folding, Special interior noise suppression, 3-point seat belts- outer rear with ECE label, Seat heater for front seats separately controlled, Protective side molding, Heat-reflecting windshield, Central locking system Keyless Entry without SAFELock, Side windows in heat-insulating glass- from B-pillar and rear window dark tinted, Breakaway interior rearview mirror- auto-dimming, Standard dashboard, Rear floor panel module- type 1, Power windows with comfort operation and circuit breaker, Airbag on driver and front passenger side- without knee airbag- with front passenger airbag deactivation, Without luggage nets/pockets on backrests, Emission standard- WLTP3 M1-N1-l//EU6EA, Side airbag in front with curtain airbag, Bright decorative trims, Alloy wheels 6.5J x 17, Luggage compartment trim (design 1), Without special body measures, Carrier frequency 433.92 MHz-434.42 Mhz, Rear spoiler, Without surface protection- with additional transport protection measures, Decorative inserts, Right exterior mirror- convex, Left exterior mirror- convex, Sun visors with mirror- airbag label on front passenger sun visor, Front head restraints, Without fire extinguisher, Additional body cover on wheel arch and side sill, Center armrest in front, Exterior mirror housings painted, Emblems, Lane keeping system plus traffic jam assist, Forward collision warning incl. autonomous emergency braking- for adaptive cruise control "high", Vent, Unsplit molded headliner, Hand brake lever handle in leather, Gearshift knob/handle in leather, Interior light in footwell, Exterior mirrors- power-folding/ adjustment- heated, Electronic immobilizer, Without CD changer/CD player, Without heat accumulator/auxiliary heater, Freely programmable instrument cluster Basic, Tire pressure monitoring system, Start-stop system with regenerative braking, Without lumbar support in seat backrests, Without navigation device, Without extended safety system, Park assist, Lane change assist, Without second battery, Alternator 140 A, Rear window wiper and washer system with intermittent control, High-beam control, LED headlamps with lens, Separate daytime running light with automatic headlight control and manual Coming and Leaving Home feature, Windshield wiper intermittent control with light/rain sensor, Dynamic headlight range control (self-adjusting while driving), 6 speakers (passive), LED rear combination lamp, 2 reading lights in front, Rear fog lamp, Adaptive cruise control (with "follow-to-stop") and speed limiter, Without front fog lamps, Without washer fluid level indicator, Without headlamp washer system, Single-tone horn, Antenna for AM/FM reception, Not hot country, Climatronic with impact pressure control- CFC-free, Non-smoker's package, Without auxiliary heater/parking heater, Visual and acoustic seat belt reminder- electric contact in front and rear, Without heated washer nozzles, Wired & Wireless App-Connect, Comfort telephony without external antenna connection, Equipment options subset for Denmark

**PICTURES**



**Picture viewer:** <https://fm.bilsalg.dk/business/picturebrowser?t=full&guid=09e789c6-c5ec-4cbf-a5c0-96a48998b9cf&carid=24150563>

## OVERVIEW OF DAMAGES AND SHORTAGES

N°	LOCATION	TYPE	SEVERITY	INSURANCE	NOTES	DAMAGE GROUP
1	R. Front Rim	Scratch	C3			
						
2	L. Rocker Panel	Scratch	C3			
						

Severity explanation:

C0 = No damage / C1 = Simple preparation / C2 = Minor preparation needed / C3 = Can be smart repaired / C4 = Repair/spray paint / C5 = Need replacement

## ELECTRICAL AND MECHANICAL CONDITION

N°	LOCATION	TYPE	NOTES
1	Is the car drivable	Yes	