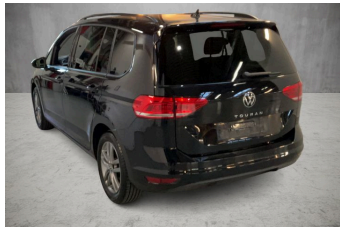


VEHICLE DESCRIPTION - VW Touran Comfortline Edition 1.5 TSI



First registration date: 11/2024	VIN: WVGZZ1T7RW036106
Colour: Black Metallic Normal gloss	Mileage (km): 18.197
Gear: Automatic (7 Gears)	Fuel type: Gasoline
Body type: MPV	Number of doors: 5
Drive type: FWD	Model year: 2015
Engine power: 110 kW	Number of seats: 7
Engine size (cc): 1498	Interior:


VEHICLE DETAILS

Number of keys: 2	Number of license plates: 2	Registration certificate: Part 1 & 2 present	Service documentation: No
Inspection date: 04-05-2026	Last service (year/month):	Mileage (km) at last service:	

SUMMARY OF THE VEHICLE'S CONDITION

Is the car in a driveable condition: Yes	Legal tire tread (minimum 1.6 mm): Yes
--	--

WHEELS

 TYPE	SEASON	BRAND	POSITION	RIM	SIZE	TREAD
Fitted	Summer tires		Front Left	Alloy rim	17"	5 mm
Fitted	Summer tires		Rear Right	Alloy rim	17"	5 mm
Fitted	Summer tires		Rear Left	Alloy rim	17"	5 mm
Fitted	Summer tires		Front Right	Alloy rim	17"	5 mm

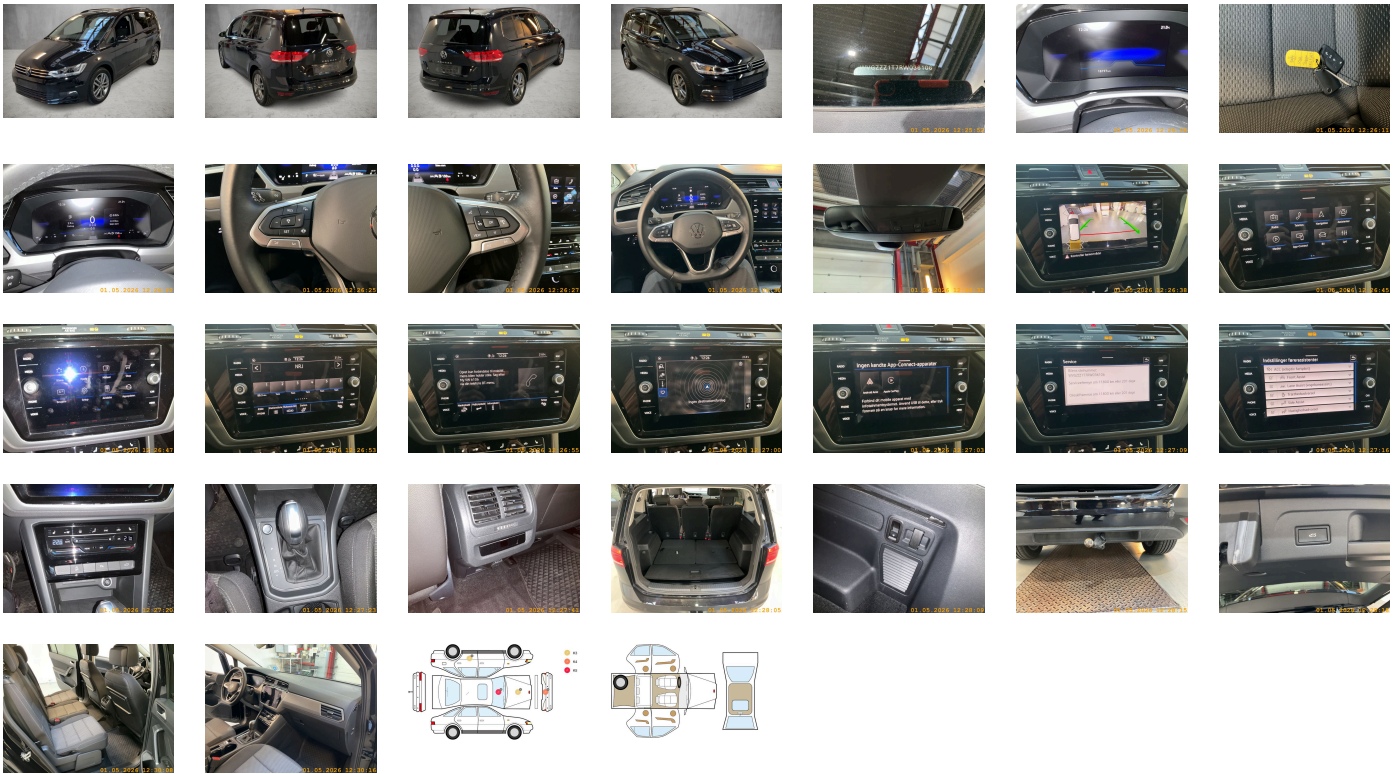
Legal tire tread (minimum 1.6 mm):

Yes

ACCESSORIES









Driving on the right, Comfort equipment, Part set without country-specific prescriptive standard, Type approval country Denmark, Operating permit- alteration, 4-cylinder SI engine 1.5 l TSI- 110 kW, Without ECO function, Online service- with OCU- with head unit coding- without engine immobilizer interconnection, Advanced driver attention & drowsiness monitor, Regional code " ECE " for radio, No special edition, Standard paint coating, No special purpose vehicle- standard equipment, Vehicles without special upgrade measures, Shock absorption in front, 7-speed automatic transmission or dual-clutch transmission DSG- note: PR family EDF, Battery 420 A (70 Ah), AirStop® tires 215/55 R17- rolling resistance class A, Rear view camera system, Air Care Climatronic 3 zone automatic climate control w/ allergen filter-enhanced air filter a. controls in rear, Refrigerant R1234yf, LED license plate lighting, Without head-up display, MPV, Left-hand drive, Suspension range 07 installation control only- no requirement forecast, With UNECE CS (R155) without SU (R156), Standard battery/alternator capacity, eCall Emergency System, 4-cylinder SI engine 1.5 l unit 05E.D, Inserts in fabric "Lasano", Easy Open & Close package with SAFELock, Adaptive Cruise Control ACC stop & go up to 210 km/h and Automatic Emergency Braking Front Assist, 2 single seats in 3rd row of seats retractable into cargo area, "Salvador" 6.5J x 17 in Gray Metallic- Volkswagen R- AirStop® tires 215/55 R17, Lane keeping system Lane Assist, Without child seat, LongLife Service Regime, Without voice control, Service indicator 30 000 km or 2 years (variable), Front vent and rotary light switch with chrome bezel, Multifunction camera, Drawers under front seats, Without add. lights (interior lighting), Dynamic Road Sign Display, Digital radio reception DAB+, Comfort seats in front, Radio "Ready 2 Discover" incl. "Streaming & Internet", Electromechanical parking brake with Auto Hold function, Instrument cluster with electronic speedometer- odometer and trip odometer- tachometer, 2 USB-C ports in the front- charging capacity up to 45 W, Standard pedal cluster, Pedestrian and cyclist monitoring as well as re-active hood, Tires without specification of tire brand, Anti-theft alarm system, LED headlamps with dynamic cornering light and LED separate daytime running light, Winter package, VE: special edition forces: *002-PI4-KA1-WLM-WD3-WWC-PE7, Preparation for We Connect and We Connect Plus or VW Connect and VW Connect Plus, Front stabilizer bar, Rear stabilizer bar, Wheelbase, Dual-clutch transmission DSG DQ200, Without decals and emblems, Without alternative drive system, Fuel tank, Elimination of nameplate for engine designation on luggage compartment lid, Rear exhaust tailpipe (standard), With electronic steering column lock, Without floor mats, Manual in Danish, Weight range 9 installation control only- no requirement forecast, Standard climatic zones, Electronic Stability Control w/ driver steering recommendation- ABS- ASR- EDL- EDTC and trailer stabilization, Fuel system for fuel-injected SI engine, Special identification label for EC for M1 passenger vehicles, Activated carbon canister (Evaporative Emission Control System (EVAP)), Tire Mobility Set: 12-volt compressor and tire sealant, Rear shock absorption- basic version 1, Folding trailer hitch- with electric release, Trims for alloy wheels, Electromechanical speed-sensitive power steering, Wheel locks with extended theft protection, Without additional front underbody guard, Tool kit, Warning triangle, Folding tables on the back of each front seat- articulated, Glove compartment with cooling system, Front-wheel drive, Disc brakes in front, Initial standard fuel filling, Without delivery equipment, Disc brakes in rear, Leather multi-function steering wheel, Without Adaptive Chassis Control, Body-colored bumpers, Allergen filter, Without additional tires, ISOFIX anchorage points (mounting fixture for child seats on rear seats), Without partition, Decorative inserts "Piano Black" for center console, Standard roof, Luggage compartment floor, Front passenger seat backrest completely folding- with table and fold-flat feature, Front seats with height adjustment, 3-point seat belts in front with height adjustment and seat belt pretensioners, Black roof rails, Luggage compartment cover with convenient open feature- extractable- removable and stowable, Without roll-up sunshade, 3-point seat belts with seat belt pretensioners in rear, Door and side trim panel in foam film and woven fabric, Heated front seats, Keyless locking and starting system Keyless Access with SAFELock, Laminated safety glass windshield- heat- and sound-insulating, Child safety lock, Privacy glass for rear side windows and rear window, Auto-dimming interior rearview mirror, Storage compartment with cover on dashboard, Driver and front passenger airbag with front passenger airbag deactivation- including knee airbag on driver side, Emission standard- WLTP3 M1- N1-I//EU6EA, Curtain airbag system for front and rear passengers incl. side airbags in front, Black trims on the side windows, 4 alloy wheels "Salvador" 6.5J x 17- Gray Metallic, Carrier frequency 433.92 MHz-434.42 Mhz, Easy Open & Close - sensor controlled luggage compartment opening and closing with remote unlocking, 3 single seats in 2nd row of seats with armrest- 2 single seats in 3rd row of seats with Easy Fold, Without surface protection- with additional transport protection measures, Decorative inserts "New Brushed Design" for dashboard and door trim panels in front, Right exterior mirror- convex, Aspherical exterior mirror on driver side, Illuminated vanity mirrors in sun visors, Safety-optimized front head restraints- longitudinally and height adjustable, Without fire extinguisher, Without additional side body covers (stone guard), Front center armrest- height- and longitudinally adjustable- w/ removable storage compartment- 2 vents in rear, Body-colored exterior mirror housings and door handles, Lane keeping system Lane Assist, Black radiator grille with chrome trims on the fins, Autonomous Emergency Braking Front Assist (for Adaptive Cruise Control ACC up to 210 km/h), Without C-rails, Storm Gray headliner, Gearshift knob in leather, Gearshift boot for automatic transmission, Standard luggage compartment floor covering, Without interior light in footwell, Ext. mirrors- power-folding- auto-dimm. on driver side- surround lighting and front pass. ext. mirror lowering funct., Anti-theft alarm system with interior monitoring- backup horn and towing protection, 12-V outlet in center console in rear and in luggage compartment, Without heat accumulator/auxiliary heater, Multi-color Digital Cockpit- selection of different info profiles possible, Vehicle class differentiation -5T0-, Tire Pressure Monitoring System, Start-stop system with regenerative braking, Without protective film for scuff plate, Overhead storage compartments, Lumbar supports in front, Preparation for subsequent activation: Navigation feature "Discover Media" incl. Streaming & Internet, Proactive passenger protection system in combination with Front Assist and Side Assist, Park Distance Control - warning signals for obstacles in the front and rear, Lane change system Side Assist and Rear Traffic Alert, Radio, Alternator 140 A, Without light control, LED headlamps with LED separate daytime running light and dynamic cornering light, Aut. headlight control with separate daytime running light- entry lighting and manual exit lighting, Rain sensor, Dynamic headlight range control with dynamic cornering light, 8 speakers, Rear combination lamp- standard design, Interior lights with switch-off delay and dimmer- 2 reading lights in front and rear, Rear fog lamp, Adaptive Cruise Control ACC stop & go incl. speed limiter, Without additional instruments for distance measurement, Front fog lamps and cornering light, Warning lamp for washer fluid level, Headlamp washer system, Diversity antenna for FM reception, Not hot country, Without preparation for two-way radio installation, Without luggage compartment lighting, Without preparation for rotating beacon/siren combination, Non-smoker's package: Storage compartment and 12-V outlet in front, Without identification lights, Without auxiliary heater/parking heater, Warning tone and warning lamp for front seat belts not fastened- warning lamp for rear seat belts not fastened, Automatically-heated washer nozzles in front, App-Connect Wireless for Apple CarPlay and Android Auto, Mobile phone interface, Operating voltage 12 V, Equipment options subset for Denmark

PICTURES



Picture viewer: <https://fm.bilsalg.dk/business/picturebrowser?t=full&guid=463de287-63dd-4aa1-8707-40ddbe0e2af2&carid=23669127>

OVERVIEW OF DAMAGES AND SHORTAGES

N°	LOCATION	TYPE	SEVERITY	INSURANCE	NOTES	DAMAGE GROUP
1	Front Windscreen	Stone Chips	C5		Reporting needed	
						
2	Front Bumper	Scratch	C4		Reporting done	
						
3	Hood	Stone Chips	C3			
						
4	L. Rear Door	Scratch	C3			
						

Severity explanation:

C0 = No damage / C1 = Simple preparation / C2 = Minor preparation needed / C3 = Can be smart repaired / C4 = Repair/spray paint / C5 = Need replacement

ELECTRICAL AND MECHANICAL CONDITION

N°	LOCATION	TYPE	NOTES
1	Is the car drivable	Yes	