

**VEHICLE DESCRIPTION - Škoda Fabia Essence 1.0 MPI**



**First registration date**  
10/2024

**VIN:**  
TMBEE6PJ4R4077386

**Colour:**  
Blue Normal gloss

**Mileage (km):**  
51.085

**Gear:**  
Manual (5 Gears)

**Fuel type:**  
Gasoline

**Body type:**  
Hatchback

**Number of doors:**  
5

**Drive type:**  
FWD

**Model year:**  
2021

**Engine power:**  
59 kW

**Number of seats:**  
5

**Engine size (cc)**  
999

**Interior:**  
Dark grey Fabric

**VEHICLE DETAILS**

**Number of keys:**  
2

**Number of license plates:**  
2

**Registration certificate:**  
Part 1 present

**Service documentation:**  
No

**Inspection date:**  
11-06-2026

**Last service (year/month):**


**Mileage (km) at last service:**

**SUMMARY OF THE VEHICLE'S CONDITION**

**Is the car in a driveable condition:**  
Yes

**Legal tire tread (minimum 1.6 mm):**  
Yes

## WHEELS

 TYPE	SEASON	BRAND	POSITION	RIM	SIZE	TREAD
Fitted	Summer tires		Front Left	Steel rim	15"	7 mm
Fitted	Summer tires		Rear Right	Steel rim	15"	7 mm
Fitted	Summer tires		Rear Left	Steel rim	15"	7 mm
Fitted	Summer tires		Front Right	Steel rim	15"	7 mm

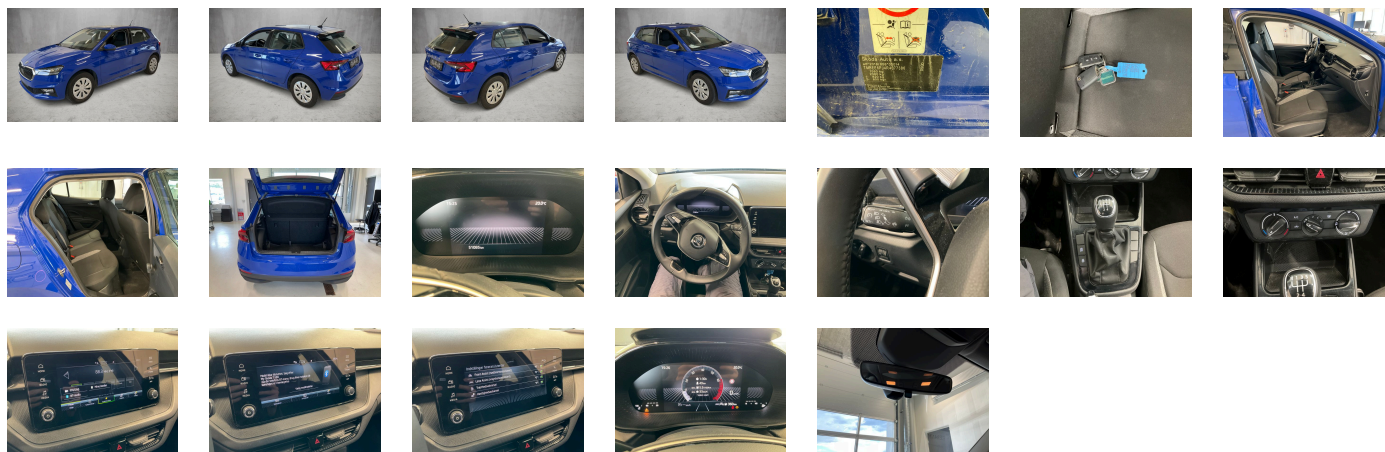
### Legal tire tread (minimum 1.6 mm):

Yes

## ACCESSORIES







Without navigation device, Height - adjustable driver seat, Luggage compartment cover- folding, Vehicle class differentiation -6VN-, Without delivery equipment, Gearshift knob/handle in leather, 3-cylinder SI engine 1.0 l unit 05C.1, Hand brake lever handle in leather, Without drawers under front seats, Without fire extinguisher, 4 speakers front, Front stabilizer bar, without USB in interior rear view mirror, Exterior mirrors- electr. adjustable- heated - painted in exterior colour (for MC colored black), Without storage compartments in trunk, Additional front underbody guard, Headlamp washer system, Two reading lights in front- two in rear, Separate daytime running light with automatic headlight control and manual Coming and Leaving Home feature, Axial and vertical adjustable steering column, Rear overhang- short, Without luggage compartment floor covering, Part set without country-specific prescriptive standard, Carrier frequency 433.92 MHz-434.42 Mhz, Refrigerant R1234yf, Luggage compartment lighting, Nameplate set in basic style, Central locking w/ radio remote control- interior controls- without SAFELock, Wheel trims, Extended and proactive pedestrian and cyclist protection, Curb weight range 1, Antenna for FM reception only, Without heat accumulator/auxiliary heater, Driving on the right, Suspension range 03 installation control only- no requirement forecast, Without add. lights (interior lighting), Center armrest in front, Textile floor mats, Rear floor panel module- type 1, DAB - Digital radio reception, Side airbag front with head airbags, Standard paint coating, Seatbelt warning - front + rear seats, 3-point seat belts in front- with pretensioner/lap belt pretensioner and height adjustment, Without additional seals outside, Tires without specification of tire brand, Without ECO function, Without additional side body covers (stone guard), Advanced driver attention & drowsiness monitor, Multi-function steering wheel, Body-colored bumpers, Breakdown kit, Without partition, Without "Multimedia" in vehicle, Rear shock absorption, Rear fog lamp for driving on the right, Seat trim covers in woven fabric, Standard climatic zones, With dynamic road sign display, Tires 185/65 R15 88H super-low rolling resistance- generation 2, Electronic stability control (ESC), No special purpose vehicle- standard equipment, Wheelbase, Without voice control, Without storage compartment, Vent, Hill start assist, Airbag on driver and front passenger side- without knee airbag- with front passenger airbag deactivation, Parking sensors rear, Chrome package, Without roof insert (standard roof), Rear window wiper and washer system with intermittent control, Single-tone horn, Without socket, Rear exhaust tailpipe (standard), Electronic immobilizer, Hatchback, LongLife Service Regime, 2x USB front (typ C data), Cruise control with Speedlimiter, Standard bumpers, Without alternative drive system, Without additional noise suppression measures for passenger compartment, Folding grab handles, Radiator grille, Without heated washer nozzles, Without second battery, Without adapter, Without bracket, "KODA Infotainment, With UNECE CS (R155) without SU (R156), Fuel tank, Washer fluid level indicator, Exterior mirrors: convex on driver side- convex on front passenger side, Rear combination lamp, Breakaway interior rearview mirror- dimming, Activated carbon canister (Evaporative Emission Control System (EVAP)), Without storage compartment package/box, Non-smoker's package, Rear seat backrest split 60:40- unsplit rear seat bench, Rear axle weight- type 1, Installation differentiation for transmission MQ 200 -- vehicle components --, Manually controlled air conditioning system, Without lane change assist, Standard seats in front, Fresh air intake system with combination filter, Standard glove compartment, Without camera systems/accident sensors, Standard rear axle, Central console - cuholder "Tub", Without decorative films/emblems, Without protective film for scuff plate, Side and rear windows in heat-insulating glass, Basic equipment variant, Fuel filler cap, Front-wheel drive, Without "drive select", Type approval country Denmark, Not hot country, Antifreeze up to -25 degree Celsius tolerance up to -30 degree C, 5-speed manual transmission, Lower decorative inserts, Operating permit- alteration, E-Call+, Without lumbar support in seat backrests, Weight range 8 installation control only- no requirement forecast, 3rd head restraint rest, Rear spoiler, 3-cylinder SI engine 1.0 l/59 kW MPI base engine is T5Y/T2D, Digital display, Spectacle storage compartment/bracket, Alternator 140 A, LED headlamps, Without tool kit and jack, Special identification label for EC for M1 passenger vehicles, Child seat anchors f. child seat system i-Size- 2x top tether and child seat anchors in front on front passenger side, Manual in Danish, Without seat heater, Without umbrella(s), 4 doors, Fuel system for fuel-injected SI engine (tropicalized), Service indicator 30 000 km or 2 years ( variable ), No special edition, Without backrest release for front seats, Remote Access 3 years, 3-point seat belts- outer rear with ECE label, Initial standard fuel filling, Standard wheel bolts, Drum brakes in rear, Transport protection film with additional transport protection measures, Tire pressure monitoring system, Shock absorption in front, Regional code " ECE " for radio, Battery 320 A (49 Ah), Windshield wiper intermittent control with light sensor, Remote Access / Pro-active service, Emission standard- WLTP3 M1- N1- I/EU6EA, Without luggage/load compartment floor, Door and side trim panel, Without light control, Power windows in front- mechanical window regulators in rear, Sun visors with mirror- airbag label on front passenger sun visor, Essence, Front head restraints, Forward collision warning incl. autonomous emergency braking- without adaptive cruise control, Without tie down straps/net/pocket, Front fog lights - lightbulb, Without trailer hitch, Preparation for roof load rack, Key for locking system with remote control, "Standard Plus" version, Standard decorative trims, Left-hand drive, Start-stop system with regenerative braking, Instrument cluster- km/h speedometer, Bluetooth, Outside door mirrors and door handles in body color, Heat-reflecting windshield, Disc brakes in front (Geomet D), Without extended safety system, Without additional malfunction display, Power steering, Steel wheels "CALISTO" 5-5J x 15" - 4pcs, With multifunction camera, Without auxiliary heater/parking heater, Standard pedal cluster, Lane Assist, Headlight range control, Without decorative inserts, Standard manufacturing sequence, Equipment options subset for Denmark

**PICTURES**



**Picture viewer:** <https://fm.bilsalg.dk/business/picturebrowser?t=full&guid=7f894214-ee3e-4803-98a2-b8faf5db6987&carid=23515500>

**OVERVIEW OF DAMAGES AND SHORTAGES**

N°	LOCATION	TYPE	SEVERITY	INSURANCE	NOTES	DAMAGE GROUP
1	L. Rear Door	Scratch	C3			
						
2	R. Rear Door	Scratch	C3			
						
3	R. Rear Quarter Panel	Dent	C3			
						

Severity explanation:

C0 = No damage / C1 = Simple preparation / C2 = Minor preparation needed / C3 = Can be smart repaired / C4 = Repair/spray paint / C5 = Need replacement

**ELECTRICAL AND MECHANICAL CONDITION**

N°	LOCATION	TYPE	NOTES
1	Is the car drivable	Yes	