

**VEHICLE DESCRIPTION - Škoda Octavia Selection 1.5 TSI MHEV**



**First registration date:**  
9/2024

**VIN:**  
TMBJR0NX6SY046842

**Colour:**  
Blue Metallic Normal gloss

**Mileage (km):**  
18.098

**Gear:**  
Automatic (7 Gears)

**Fuel type:**  
Hybrid petrol

**Body type:**  
Estate Wagon

**Number of doors:**  
5

**Drive type:**  
FWD

**Model year:**  
2024

**Engine power:**  
110 kW

**Number of seats:**  
5

**Engine size (cc):**  
1498

**Interior:**

**VEHICLE DETAILS**

**Number of keys:**  
2

**Number of license plates:**  
2

**Registration certificate:**  
Part 1 & 2 present

**Service documentation:**  
No

**Inspection date:**  
29-04-2026

**Last service (year/month):**


**Mileage (km) at last service:**

**SUMMARY OF THE VEHICLE'S CONDITION**

**Is the car in a driveable condition:**  
Yes

**Legal tire tread (minimum 1.6 mm):**  
Yes

## WHEELS

 TYPE	SEASON	BRAND	POSITION	RIM	SIZE	TREAD
Fitted	Summer tires		Front Left	Alloy rim	17"	5 mm
Fitted	Summer tires		Rear Right	Alloy rim	17"	5 mm
Fitted	Summer tires		Rear Left	Alloy rim	17"	5 mm
Fitted	Summer tires		Front Right	Alloy rim	17"	5 mm

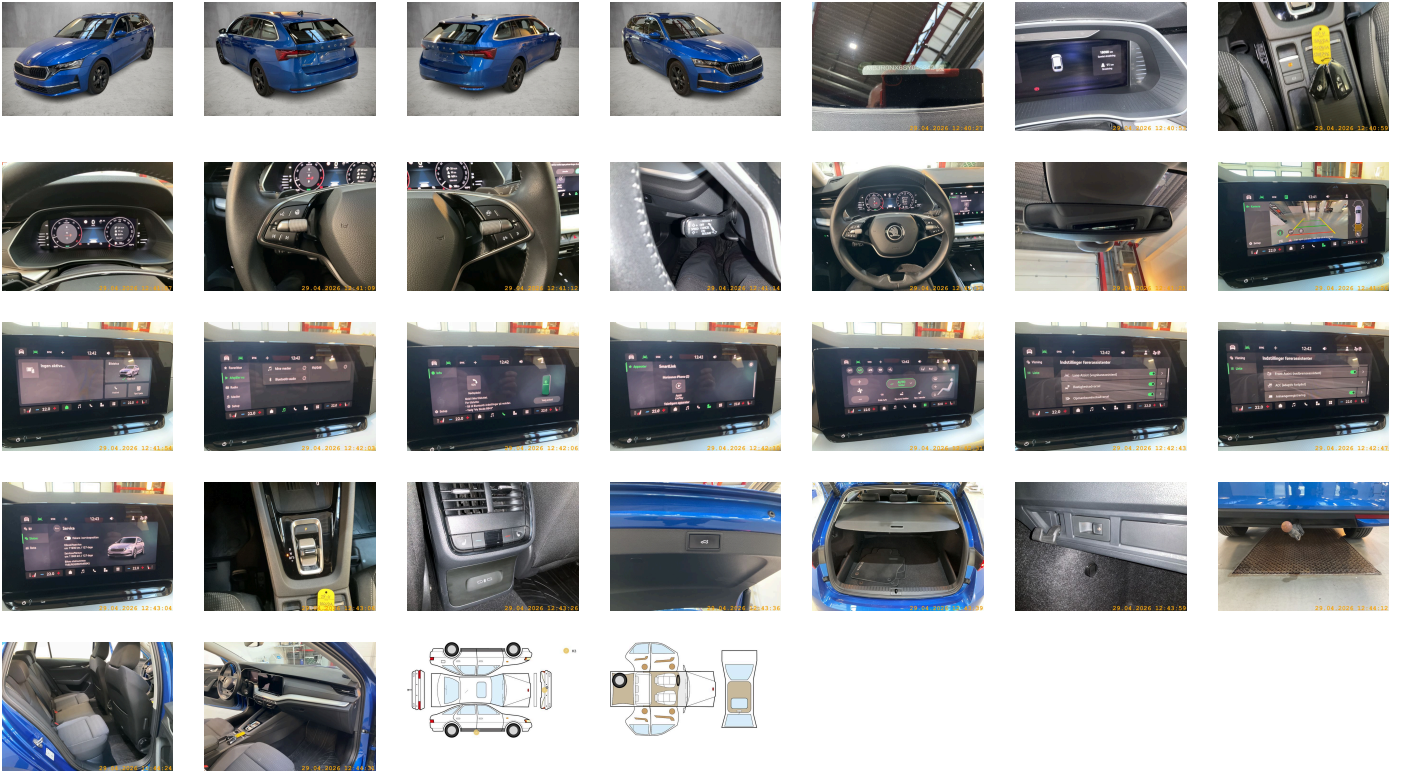
**Legal tire tread (minimum 1.6 mm):**

Yes

## ACCESSORIES





Driving on the right, Comfort equipment, Part set without country-specific prescriptive standard, Type approval country Denmark, Operating permit- alteration, Alloy wheels "ROTARE AERO" 7J x 17" - 4 pcs, 4-cylinder SI engine 1.5 l/110 kW TSI base engine is TJ7/N09/T9F/T57/T0D, Remote Access / Pro-active service, Advanced driver attention & drowsiness monitor, Regional code " ECE " for radio, Without charging cable, No special edition, Standard paint coating, No special purpose vehicle-standard equipment, Standard electronic engine sound, Vehicles with special upgrade measures, Preparation for alcohol interlock, Without Car2X, Shock absorption in front, 7-speed automatic transmission, Tires 205/55 R17 91V Low Rolling Resistance, Without bracket, Curb weight range 1, Rear axle weight- type 1, Entry-level infotainment system radio upgrade (UNECE), Battery 420 A (70 Ah), "REAR VIEW", Climatronic (3-zone) with air conditioning control panel in rear, Refrigerant R1234yf, Without head-up display, Wagon/Avant, With speed limiter, Left-hand drive, Suspension range 04 installation control only- no requirement forecast, Adapter, With UN-ECE cybersecurity & software update, Standard battery/alternator capacity, Emergency call system eCall+, 4-cylinder SI engine 1.5 l unit 05E.D, Seat trim covers in fabric LOFT, Alloy wheels "ROTARE AERO" 7J x 17" - 4 pcs, Tow bar swiveling- el. unlockable and with adapter, Service indicator 30 000 km or 2 years ( variable ), Without storage compartment package/box, LongLife Service Regime, Without voice control, With multifunction camera, Without add. lights (interior lighting), With dynamic road sign display, DAB - Digital radio reception, Comfort seats in front (sports seats forRS), Hill start assist, Parking brake, Standard rear seat release, Instrument cluster- km/h speedometer, External- USB type C data socket(s) and charging socket(s) with increased charging capacity, Standard pedal cluster, Tire suppliers for EU countries, Remote Access 3 years, Front stabilizer bar, 4 doors, Without rear stabilizer bar, Wheelbase, Installation differentiation for transmission DQ200 -- vehicle components --, Standard manufacturing sequence, Hybrid drive system mHEV, Nameplate set (SKODA w. Octavia- w/o 4x4- w/o Hybrid), Standard rear axle, Rear exhaust tailpipe (standard), Without floor mats, Manual in Danish, Weight range 12 installation control only- no requirement forecast, Standard climatic zones, Brake control system for vehicles with electric drive (ESC and electromechanical brake booster), Fuel system for fuel-injected SI engine, Special identification label for EC for M1 passenger vehicles, Activated carbon canister (Evaporative Emission Control System (EVAP)), Breakdown kit, Rear shock absorption-basic version 1, Disc brakes in rear, Trailer hitch mechanically swiveling and power-detachable, Trims for alloy wheels, Speed-related variable steering assist (Servotronic), Standard wheel bolts, Mass damper for steering wheel- XX Hz, Without additional front underbody guard, Tool kit, Without folding table on front seat backrest, Front-wheel drive, Electronic differential lock XDS- dynamic traction support, Disc brakes in front (Geomet D), Initial standard fuel filling (6L), Without delivery equipment, Additional exterior noise suppression, Vehicle class differentiation -5EN-, Leather-wrapped multi-function steering wheel- heated- with tiptronic, Without locking and starting systems, Without "drive select", Body-colored bumpers, Without additional tires, Without electric motor (hybrid), Child seat anchors f. child seat system i-Size- 2x top tether and child seat anchors in front on front passenger side, Without partition, 3-point seat belt for center rear seat, Center console, Without roof insert (standard roof), Without luggage/load compartment floor, Without backrest release for front seats, Manual height adjustment for front seats, Unsplit rear seat bench- split folding backrest- with center armrest, Storage compartments in trunk, 3-point seat belts in front- with tensioner and height adjustment, Roof rails, Three rear head restraints, El. rollo (w/o sun rollo- w/o storage box), Special interior noise suppression, Without ski bag, 3-point seat belts- outer rear with ECE label, Door and side trim panel, Seat heater for front and rear seats separately controlled, Without seat ventilation/massage seat, Virtual pedal, Heated windshield, With emergency steering support with turn assist, Power-operated child safety lock, Side and rear windows in heat-insulating glass, Keyless locking and starting system Keyless Advanced with SAFELOCK, Breakaway interior rearview mirror- auto-dimming, Standard dashboard, Rear floor panel module- type 4, Power windows with comfort operation and circuit breaker, Airbag on driver and front passenger side- knee airbag on driver side- with front passenger airbag deactivation, Emission standard- WLTP3 M1- N1-l//EU6EA, Chrome package, Without special body measures, UWB-capable country and carrier frequency- 433.92 to 434.42 MHz, Exterior mirrors: convex on driver side- convex on front passenger side, Rear spoiler, Transport protection film with additional transport protection measures, Sun visors with mirror and airbag label on front passenger side, Front head restraints, Side airbag in front and rear- with curtain airbag and interaction airbag in front, Additional stone guard body covers, Center armrest in front, Exterior mirror housings and various add-on parts in body color, Lane Assist with adaptive lane guidance function + Emergency Assist, Vent, Without tie down straps/net/pocket, Without gearshift knob/handle, Luggage compartment floor covering "Comfort", Without interior light in footwell, Exterior rear view mirrors, glass el. adjusted-auto dimming (driver)- heated- housing el. powerf.- board.spot(w. KA6), Without maximal speed limitation, Anti-theft alarm system- interior monitoring- backup horn- and towing protection, Tire pressure monitoring system, 12-volt socket in luggage boot, Without heat accumulator/auxiliary heater, FPK Display, Start-stop system with regenerative braking, Scuff plates in door apertures, Manually adjustable lumbar support in front seats, Without navigation device, Decorative inserts, With extended safety system (PreCrash), Park distance control in front and rear, Without lane change assist, Without mode 3 charging cable, Without second battery, High-beam control, LED headlamps, "FRONT ASSIST" - with warning and braking reaction to vehicles- pedestrians and cyclists, Rear window wiper "AERO", Windshield wiper intermittent control with light/rain sensor, Headlight range control, 8 speakers (passive), Rear fog light on one side- back-up light on both sides, Adaptive cruise control, LED rear combination lamp- variable lighting functions- special styling, Without front fog lamps, Without headlamp washer system, Single-tone horn, Antenna for FM reception only- diversity, Not hot country, Luggage compartment lighting, Belt-driven integrated starter alternator 48 V 110 - 250 A, Without additional malfunction display, Separate daytime running light with automatic headlight control and automat. Coming and Leaving Home feature, Without supertone system and tone sequence control, Without auxiliary heater/parking heater, Visual and acoustic seat belt reminder- electric contact in front and rear, Additional retro-reflectors (door area), Without heated washer nozzles, "SMART LINK" (wired and wireless connect), Comfort telephony: wireless charging (fast charge) without external antenna connection, Operating voltage 12 V, Equipment options subset for Denmark

**PICTURES**



**Picture viewer:** <https://fm.bilsalg.dk/business/picturebrowser?t=full&guid=57f9474c-9dcd-436a-ad6a-7c6281465983&carid=23211709>

## OVERVIEW OF DAMAGES AND SHORTAGES

N°	LOCATION	TYPE	SEVERITY	INSURANCE	NOTES	DAMAGE GROUP
1	Front Bumper	Scratch	C3			
						
2	R. Rocker Panel	Scratch	C3			
						

Severity explanation:

C0 = No damage / C1 = Simple preparation / C2 = Minor preparation needed / C3 = Can be smart repaired / C4 = Repair/spray paint / C5 = Need replacement

## ELECTRICAL AND MECHANICAL CONDITION

N°	LOCATION	TYPE	NOTES
1	Is the car drivable	Yes	