

VEHICLE DESCRIPTION - Audi Q2 Prestige 1.5 35 TFSI



First registration date
7/2024

VIN:
WAUZZZGA2RA071317

Colour:
Silver Metallic Normal gloss

Mileage (km):
19.953

Gear:
Automatic (7 Gears)

Fuel type:
Gasoline

Body type:
SUV

Number of doors:
5

Drive type:
FWD

Model year:
2020

Engine power:
110 kW

Number of seats:
5

Engine size (cc)
1498

Interior:
Black Fabric

VEHICLE DETAILS

Number of keys:
2

Number of license plates:
2

Registration certificate:
Part 1 & 2 present

Service documentation:
No

Inspection date:
15-04-2026

Last service (year/month):

Mileage (km) at last service:

SUMMARY OF THE VEHICLE'S CONDITION

Is the car in a driveable condition:
Yes

Legal tire tread (minimum 1.6 mm):
Yes

WHEELS

 TYPE	SEASON	BRAND	POSITION	RIM	SIZE	TREAD
Fitted	All year tires		Rear Left	Alloy rim	17"	7 mm
Fitted	All year tires		Front Right	Alloy rim	17"	7 mm
Fitted	All year tires		Front Left	Alloy rim	17"	7 mm
Fitted	All year tires		Rear Right	Alloy rim	17"	7 mm

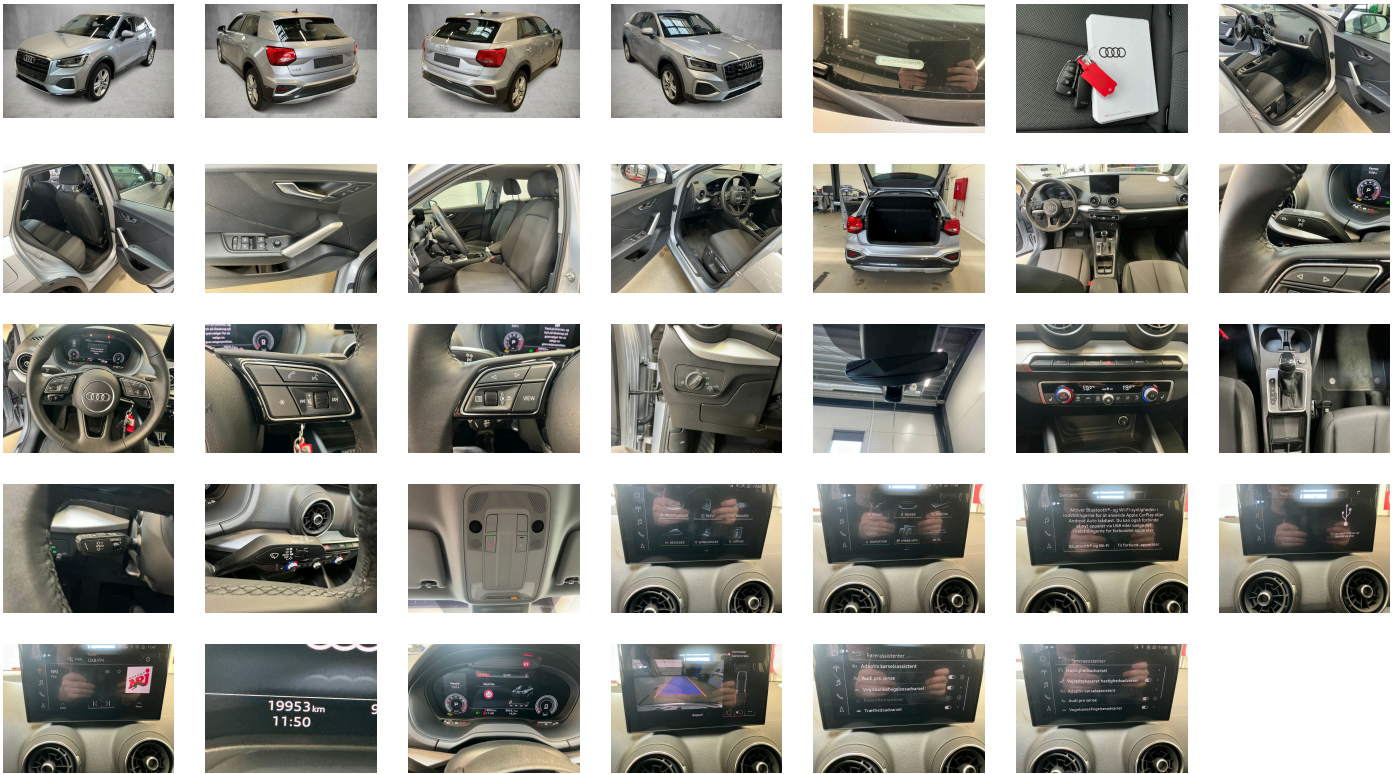
Legal tire tread (minimum 1.6 mm):

Yes

ACCESSORIES



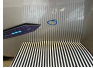



Standard-production quality, Driving on the right, No self-collection, Audi AG, advanced, Part set without country-specific prescriptive standard, Type approval country Denmark, Operating permit- alteration, 4-cylinder SI engine 1.5 l/110 kW TSI base engine is TJ7/N09/T9F/T57/T0D, Without ECO function, Audi connect remote & control (for MMI navigation plus), Advanced driver attention & drowsiness monitor, Regional code " ECE " for radio, Without vehicle inlet, Without charging cable, No special edition, Control of series production, Without customized installation, Basic equipment variant, Production wheels, No special purpose vehicle- standard equipment, Without antenna amplifier, Vehicles with special upgrade measures, Shock absorption in front, S tronic, Tires 215/55 R17 94V, Audi connect navigation & infotainment, SI engine, Top infotainment system High (MIB3), Battery 420 A (70 Ah), Reversing camera, Refrigerant R1234yf, Without head-up display, Box, Left-hand drive, Suspension range 03 installation control only- no requirement forecast, SWIN management, Transit coating (type 1), Standard battery/alternator capacity, Statutory emergency call, 4-cylinder SI engine 1.5 l unit 05E.D, Script cloth, Comfort package plus, Assist package Park, Without Storage and Luggage Compartment package and 12V socket in the rear, LongLife Service Regime, Service indicator 30 000 km or 2 years (variable), Without interior trim, With multifunction camera, Interior lighting, Camera-based traffic sign recognition, Digital Audio Broadcasting, Standard seats- front, Control of special edition prices, Hold assist, Smartphone interface, Standard rear seat release, Instrument cluster- km/h speedometer, Standard pedal cluster, Extended and proactive pedestrian and cyclist protection, Tires without specification of tire brand, Equipment package for Denmark, Internal control code, Internal control code, Internal control code, Internal control code, Front stabilizer bar, 5 doors, Without rear stabilizer bar, Wheelbase, Standard, Installation differentiation for transmission DQ200 -- vehicle components --, Standard manufacturing sequence, Without alternative drive system, With special labels safety certificates for Denmark, Vehicle class differentiation -GA0-, Standard rear axle, Exhaust tailpipes, Floor mats- front and rear, Without special color trim, Manual in Danish, Weight range 3 installation control only- no requirement forecast, Standard climatic zones, Electronic Stabilization Control ESC, Fuel system for fuel-injected SI engine, Special identification label (EU), Activated carbon canister (Evaporative Emission Control System (EVAP)), Tire repair kit, Standard suspension, Preparation for trailer hitch, Progressive steering, Standard wheel bolts, Without additional front underbody guard, Vehicle tool kit, First-aid kit with warning triangle, Without folding table on front seat backrest, Without refrigerator/glove compartment cooling system, Leather steering wheel- 3-spoke with multifunction plus, Front-wheel drive, Disk brakes- front- 15-inch, Initial standard fuel filling, Disk brakes- rear- 15-inch, Without Audi drive select, Bumpers- advanced- in contrasting paint finish, Labels in English and German, Without additional tires, Model name as per new output designation, Without electric motor (hybrid), ISOFIX and top tether for outer rear seats, Without partition, Without roof insert (standard roof), ISOFIX child seat mounting for the front passenger seat, Without backrest release for front seats, Front passenger seat- height-adjustable, Rear seat backrest- folding, Omission of roof rails, Three rear head restraints, Seat heating- front, Manual luggage compartment lid, Windshield with gray tinted sunshield, Child-proof lock- electrically operated, Remote control key- without Safelock, Rear and side windows with heat-insulating glazing, Interior mirror- automatically dimming- frameless, Rear floor panel module- type 7, Window controls, Airbags- front, front passenger airbag can be deactivated, Emission standard- WLTP3 M1- N1-//EU6EA, Side airbags- front and head airbag system, Standard trim strips, Wheels- 5-twin-spoke- 7.0J x 17- 215/55 R17 tires, Without special body measures, Carrier frequency 433.92 MHz-434.42 Mhz, Roof spoiler, Adhesive film, Inlays- diamond paint finish- Silver Gray, Exterior mirrors on the right- (large field of view)- convex, Left exterior mirror- aspherical, Head restraints- front, Without fire extinguisher, Comfort center armrest- front, Exterior mirror housings in body color, Without decorative films/emblems, Sideblades in body color, Lane departure warning, Audi pre sense front for adaptive cruise control, Headlining in cloth in specific color, Luggage compartment mat, Rear trim panel (ECE), Front license plate carrier, Exterior mirrors- electrically adjustable- heated and folding- automatically dimming on both sides, Electronic immobilizer, Without heat accumulator/auxiliary heater, Gearshift/selector lever handle, Without preparation for VTS (vehicle tracking system), Without leather, Tire pressure loss indicator, Start-stop system with recuperation, Door sill trims with aluminum inlays- front, 4-way lumbar support for the front seats, Without wind deflector, Navigation preparation, Without extended safety system, Parking system plus, Without lane change assist, LED headlights, Alternator 140 A, Without light control, Separate daytime running light, Rear window wiper and washer system with intermittent control, 6 loudspeakers, Rear fog lamps, Adaptive cruise control, Rear lights, Washer fluid level indicator, Without headlamp washer system, Two-tone horn, Not hot country, Deluxe automatic air conditioning, Non-smoker's package, Without neck heating, Without auxiliary heater/parking heater, Seat belt reminder, Audi virtual cockpit, Brake pad wear indicator, Audi phone box light, Equipment options subset for Denmark

PICTURES



Picture viewer: <https://fm.bilsalg.dk/business/picturebrowser?t=full&guid=467440da-3f56-44ee-a7e9-87ab486e122d&carid=22933697>

OVERVIEW OF DAMAGES AND SHORTAGES

N°	LOCATION	TYPE	SEVERITY	INSURANCE	NOTES	DAMAGE GROUP
1	R. Rear Door  	Scratch	C4		Reporting needed	Group 1
2	R. Rear Door  	Dent	C3		Reporting needed	Group 1
3	R. Rear Quarter Panel  	Dent	C3		Reporting needed	

Severity explanation:

C0 = No damage / C1 = Simple preparation / C2 = Minor preparation needed / C3 = Can be smart repaired / C4 = Repair/spray paint / C5 = Need replacement

ELECTRICAL AND MECHANICAL CONDITION

N°	LOCATION	TYPE	NOTES
1	Is the car drivable	Yes	