

VEHICLE DESCRIPTION - Audi Q2 Prestige 1.5 35 TFSI



First registration date:
6/2024

VIN:
WAUZZZGAXRA064809

Colour:
Dark blue Metallic Normal gloss

Mileage (km):
29.630

Gear:
Automatic (7 Gears)

Fuel type:
Gasoline

Body type:
SUV

Number of doors:
5

Drive type:
FWD

Model year:
2020

Engine power:
110 kW

Number of seats:
5

Engine size (cc):
1498

Interior:
Grey Fabric

VEHICLE DETAILS

Number of keys:
2

Number of license plates:
2

Registration certificate:
Part 1 & 2 present

Service documentation:
Yes

Inspection date:
03-06-2026

Last service (year/month):
2024/6


Mileage (km) at last service:
7

SUMMARY OF THE VEHICLE'S CONDITION

Is the car in a driveable condition:
Yes

Legal tire tread (minimum 1.6 mm):
Yes

WHEELS

 TYPE	SEASON	BRAND	POSITION	RIM	SIZE	TREAD
Fitted	Summer tires		Front Left	Alloy rim	17"	4 mm
Fitted	Summer tires		Rear Right	Alloy rim	17"	6 mm
Fitted	Summer tires		Rear Left	Alloy rim	17"	6 mm
Fitted	Summer tires		Front Right	Alloy rim	17"	4 mm

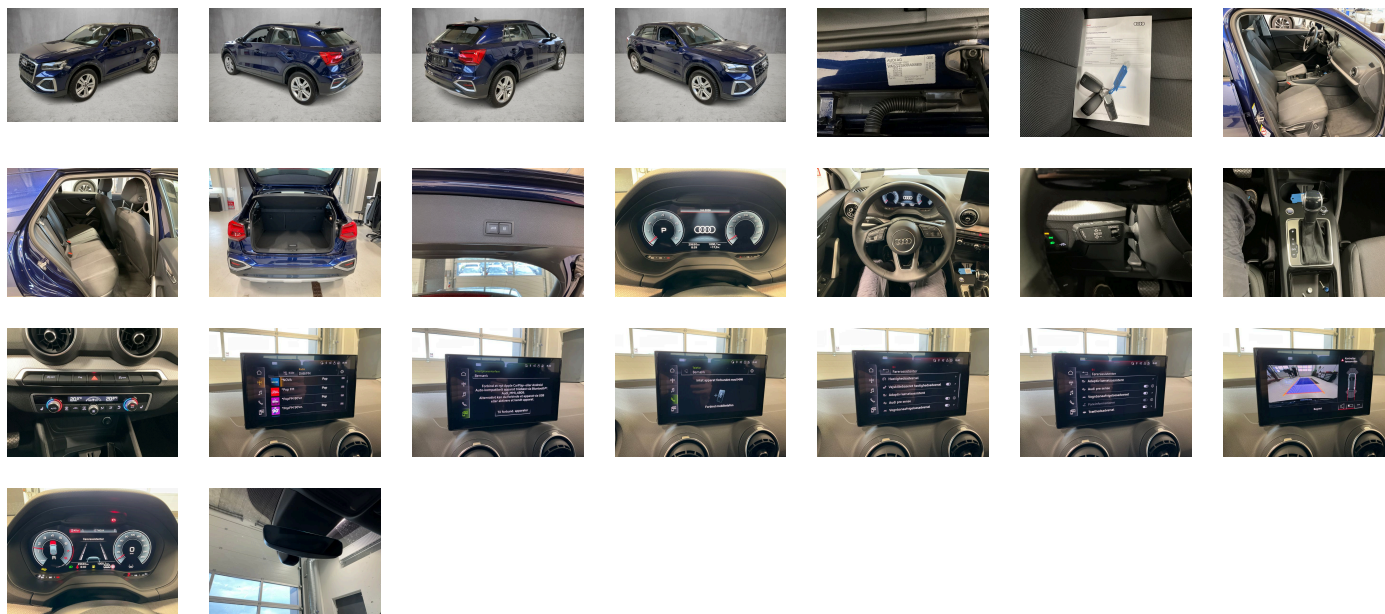
Legal tire tread (minimum 1.6 mm):

Yes

ACCESSORIES

Window controls, Tires 215/55 R17 94V, Operating permit- alteration, Model name as per new output designation, Without fire extinguisher, Audi pre sense front for adaptive cruise control, Without interior trim, Smartphone interface, S tronic, Headlining in cloth in specific color, Without vehicle inlet, Shock absorption in front, Transit coating (type 1), Exterior mirrors- electrically adjustable- heated and folding- automatically dimming on both sides, Equipment package for Denmark, Without additional front underbody guard, Battery 420 A (70 Ah), First-aid kit with warning triangle, Rear trim panel (ECE), Luggage compartment lid- electrically opening and closing, Internal control code, Part set without country-specific prescriptive standard, Carrier frequency 433.92 MHz-434.42 Mhz, Refrigerant R1234yf, Interior mirror-automatically dimming- frameless, Lane departure warning, Windshield with gray tinted sunshield, Extended and proactive pedestrian and cyclist protection, Without antenna amplifier, Without heat accumulator/auxiliary heater, Audi connect navigation & infotainment, Driving on the right, Comfort package plus, Suspension range 03 installation control only- no requirement forecast, Interior lighting, Bumpers- advanced- in contrasting paint finish, Comfort center armrest- front, Floor mats- front and rear, Digital Audio Broadcasting, Audi phone box light, Side airbags- front and head airbag system, Seat belt reminder, Omission of roof rails, Standard trim strips, ISOFIX child seat mounting for the front passenger seat, Door sill trims with aluminum inlays- front, Without customized installation, Tires without specification of tire brand, Matrix LED headlights and LED rear lights, Audi AG, Without Storage and Luggage Compartment package and 12V socket in the rear, Without ECO function, Without electric motor (hybrid), Adaptive cruise control, Without special body measures, Advanced driver attention & drowsiness monitor, Tire repair kit, Without partition, 6 loudspeakers, Standard climatic zones, Camera-based traffic sign recognition, Electronic Stabilization Control ESC, No special purpose vehicle-standard equipment, Standard suspension, Child-proof lock- electrically operated, 4-cylinder SI engine 1.5 l unit 05E.D, Airbags- front, front passenger airbag can be deactivated, Without roof insert (standard roof), Installation differentiation for transmission DQ200 -- vehicle components --, Rear window wiper and washer system with intermittent control, Assist package Park, Without head-up display, SI engine, Electronic immobilizer, LongLife Service Regime, Seat heating- front, Without headlamp washer system, Without alternative drive system, Matrix LED headlights with dynamic light sequencing and dynamic turn signal, Without charging cable, Separate daytime running light, Standard rear seat release, Standard-production quality, Three rear head restraints, Vehicle class differentiation -GA0-, Exterior mirrors on the right- (large field of view)- convex, Roof spoiler, Hold assist, Internal control code, SWIN management, Washer fluid level indicator, Script cloth, Rear floor panel module- type 7, Without additional tires, Audi virtual cockpit, Exhaust tailpipes, Activated carbon canister (Evaporative Emission Control System (EVAP)), Parking system plus, Non-smoker's package, Rear seat backrest- folding, With special labels safety certificates for Denmark, Sideblades in body color, Without lane change assist, Standard seats- front, Audi connect remote & control (for MMI navigation plus), Internal control code, Standard rear axle, Wheels- 5-twin-spoke- 7.0J x 17- 215/55 R17 tires, Top infotainment system High (MIB3), No self-collection, Without decorative films/emblems, Without refrigerator/glove compartment cooling system, Labels in English and German, Rear and side windows with heat-insulating glazing, Basic equipment variant, Front-wheel drive, Without Audi drive select, Type approval country Denmark, Not hot country, Progressive steering, Equipment package for Denmark, Control of special edition prices, Without wind deflector, Statutory emergency call, 4-cylinder SI engine 1.5 l/110 kW TSI base engine is TJ7/N09/T9F/T57/T0D, Disk brakes- front- 15-inch, Weight range 3 installation control only- no requirement forecast, Left exterior mirror- aspherical, Without preparation for VTS (vehicle tracking system), LED rear lights with dynamic turn signal, Alternator 140 A, Without leather, Vehicles with special upgrade measures, Matrix LED headlights with dynamic light sequencing and dynamic turn signal, Special identification label (EU), Manual in Danish, 5 doors, Rear fog lamps, Service indicator 30 000 km or 2 years (variable), Convenience key- without Safelock, No special edition, Without backrest release for front seats, Initial standard fuel filling, Brake pad wear indicator, Front license plate carrier, 4-way lumbar support for the front seats, Standard wheel bolts, Reversing camera, Adhesive film, Without neck heating, Regional code " ECE " for radio, Tire pressure loss indicator, Without rear stabilizer bar, Deluxe automatic air conditioning, Emission standard- WLTP3 M1- N1-I//EU6EA, Control of series production, Preparation for trailer hitch, Front stabilizer bar, Front passenger seat- height-adjustable, Standard, Internal control code, Without folding table on front seat backrest, Head restraints- front, Vehicle tool kit, Without special color trim, advanced, Inlays- diamond paint finish- Silver Gray, Luggage compartment mat, Fuel system for fuel-injected SI engine, Disk brakes- rear- 15-inch, Standard battery/alternator capacity, Left-hand drive, Start-stop system with recuperation, Instrument cluster- km/h speedometer, Production wheels, Without extended safety system, Two-tone horn, Exterior mirror housings in body color, Box, Gearshift/selector lever handle, With multifunction camera, Without auxiliary heater/parking heater, Leather steering wheel- 3-spoke with multifunction plus, Standard pedal cluster, Navigation preparation, Wheelbase, ISOFIX and top tether for outer rear seats, Standard manufacturing sequence, Equipment options subset for Denmark

PICTURES



Picture viewer: <https://fm.bilsalg.dk/business/picturebrowser?t=full&guid=c634bbd0-ce39-4af5-a584-42403e172cc3&carid=22753401>

OVERVIEW OF DAMAGES AND SHORTAGES

N°	LOCATION	TYPE	SEVERITY	INSURANCE	NOTES	DAMAGE GROUP
1	L. Front Quarter Panel, List	Scratch	C4		Reporting needed	



Severity explanation:

C0 = No damage / C1 = Simple preparation / C2 = Minor preparation needed / C3 = Can be smart repaired / C4 = Repair/spray paint / C5 = Need replacement

ELECTRICAL AND MECHANICAL CONDITION

N°	LOCATION	TYPE	NOTES
1	Is the car drivable	Yes	