

VEHICLE DESCRIPTION - VW T-ROC Style Edition 1.5 TSI



First registration date:
5/2024

VIN:
WVGZZZA17RV159893

Colour:
null Normal gloss

Mileage (km):
35.905

Gear:
Automatic (7 Gears)

Fuel type:
Gasoline

Body type:
SUV

Number of doors:
5

Drive type:
FWD

Model year:
2021-2025

Engine power:
110 kW

Number of seats:
5

Engine size (cc):
1498

Interior:

VEHICLE DETAILS

Number of keys:
2

Number of license plates:
2

Registration certificate:
Part 1 present

Service documentation:
No

Inspection date:
24-06-2026

Last service (year/month):


Mileage (km) at last service:

SUMMARY OF THE VEHICLE'S CONDITION

Is the car in a driveable condition:
Yes

Legal tire tread (minimum 1.6 mm):
Yes

WHEELS

 TYPE	SEASON	BRAND	POSITION	RIM	SIZE	TREAD
Fitted	Winter tires		Front Left	Alloy rim	17"	6 mm
Fitted	Winter tires		Rear Right	Alloy rim	17"	6 mm
Fitted	Winter tires		Rear Left	Alloy rim	17"	6 mm
Fitted	Winter tires		Front Right	Alloy rim	17"	6 mm

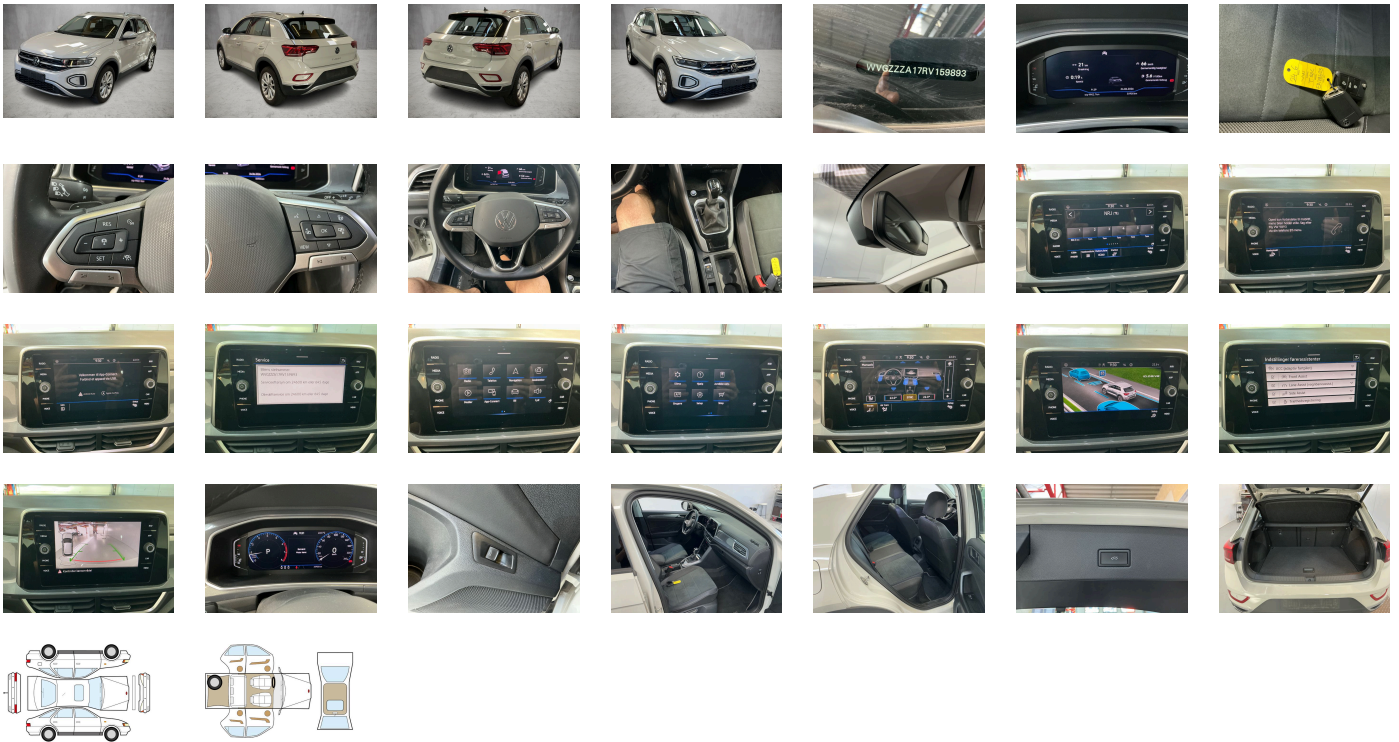
Legal tire tread (minimum 1.6 mm):

Yes

ACCESSORIES

7-speed automatic transmission or dual-clutch transmission DSG- note: PR family EDF, Autonomous Emergency Braking Front Assist (for Adaptive Cruise Control ACC up to 210 km/h), Without vehicle inlet, LED Plus headlamps with LED separate daytime running light, Winter package, Electromechanical speed-sensitive power steering, Without additional front underbody guard, Auto-dimming interior rearview mirror, Dark Red LED rear combination lamps, Part set without country-specific prescriptive standard, Lane change system Side Assist, Carrier frequency 433.92 MHz-434.42 Mhz, Refrigerant R1234yf, Elimination of nameplate for engine designation on luggage compartment lid, Body-colored bumpers- radiator grille with chrome trim, Without heat accumulator/auxiliary heater, Weight range 4 installation control only- no requirement forecast, Driving on the right, Suspension range 03 installation control only- no requirement forecast, Center armrest in front, High-beam control Light Assist, 2 USB-C ports in the front- 2 USB-C charging sockets on the center console in rear- charging capacity up to 45 W, Adaptive Cruise Control ACC stop & go incl. speed limiter, Digital radio reception DAB+, Curtain airbag system for front and rear passengers incl. side airbags in front, Battery 380 A (59 Ah) EFB+, Standard paint coating, Warning signal and warning lamp for front and rear seat belts not fastened, Door and side trim panel in foam film- insert in leatherette, Emission standard EU6 AP, Tires without specification of tire brand, Without preparation for two-way radio installation, Without ECO function, Warning triangle, Without electric motor (hybrid), Easy Open & Close - sensor controlled luggage compartment opening and closing with remote unlocking, Without special body measures, Operating permit- alteration, Tire Mobility Set: 12-volt compressor and tire sealant, Without partition, Automatic headlight control with LED separate daytime running light and exit and entry lighting, Light unit in front footwell, VE: IQ.DRIVE package without proactive passenger protection system forces SW9, Retro-reflectors in all doors, Standard climatic zones, Electronic Stability Control w/ driver steering recommendation- ABS- ASR- EDL- EDTC and trailer stabilization, No special purpose vehicle- standard equipment, Without voice control, 4-cylinder SI engine 1.5 l unit 05E.D, Driver and front passenger airbag with front passenger airbag deactivation, Rear view camera system, Hill start assist, Electromechanical parking brake with Auto Hold function, Chrome elements on rotary light switch- power mirror switch- window regulator switches, vents with chrome frames, Standard roof, Dual-clutch transmission DSG DQ200, Rear window wiper with intermittent control, Single-tone horn, Without socket, Easy Open package without SAFELock, Rear exhaust tailpipe (standard), Completely folding front passenger seat backrest, 3-point seat belts in front with height adjustment and seat belt pretensioners, Electronic immobilizer, Hatchback, LongLife Service Regime, Without headlamp washer system, Black door lower parts- with chrome molding, Without alternative drive system, Operating voltage 12 V, Without charging cable, Heated front seats, White ambient lighting, Emergency call service-10-year contract duration as of initial delivery- condition: mob. phone network available, Trims for alloy wheels, Exterior mirrors: aspherical on driver side- convex on front passenger side, 3 head restraints in rear, Front stabilizer bar, Radio "Ready 2 Discover" incl. "Streaming & Internet", App-Connect Wireless for Apple CarPlay and Android Auto, Keyless locking and starting system Keyless Access without SAFELock, Rear floor panel module- type 7, Without additional tires, Activated carbon canister (Evaporative Emission Control System (EVAP)), Cornering light and poor weather light, Non-smoker's package: Storage compartment and 12 V outlet in front, Decorative inserts "Deep Iron Gray" for dashboard- center console and front door trim panels, Tool kit, Asymmetric split folding rear seat backrest- with center armrest, Inserts of front seats and outer rear seats in ArtVelours microfleece, Standard rear axle, Without protective film for scuff plate, Illuminated vanity mirrors in sun visors, Elimination of cooling system of glove compartment, Green heat-insulating glass windows on sides and in rear, Basic equipment variant, Online service- with OCU- with head unit coding- without engine immobilizer interconnection, Front-wheel drive, Without Adaptive Chassis Control, Type approval country Denmark, Warning lamp for washer fluid level, Not hot country, Driver alert system, Without decals and emblems, Disc brakes in front, Power windows, Tires 215/55 R17 low rolling resistance, Lumbar supports in front, Gearshift knob in leather, Without fire extinguisher, Without floor mats, Equipment change, Rear shock absorption- chassis with increased ride height, Height-adjustable and removable luggage compartment floor, 4-cylinder SI engine 1.5 l TSI- 110 kW, 4 alloy wheels "Johannesburg" 7J x 17- diamond-turned surface, Radio, Alternator 140 A, Vehicles with special upgrade measures, Special identification label for EC for M1 passenger vehicles, Rear fog light on one side- back-up light on both sides, Surround lighting with welcome light, Manual in Danish, Silver-anodized roof rails, 4 doors, Service indicator 30 000 km or 2 years (variable), No special edition, Headliner, Preparation for subsequent activation: Navigation feature "Discover Media" incl. Streaming & Internet, 3-point seat belts with seat belt pretensioners for the outer rear seats, Initial standard fuel filling, Diversity antenna for FM reception, Brake pad wear indicator, Standard wheel bolts, Sports comfort seats in front, Tire Pressure Monitoring System, Automatically-heated washer nozzles in front, Without exterior ambient lighting, Shock absorption in front, Regional code " ECE " for radio, Multifunction camera, Without rear stabilizer bar, Comfort equipment, Dynamic headlight range control, Exterior mirrors- power-adjustable- folding- and heated- with memory feature, Without UN-ECE cybersecurity & software update, Leather multi-function steering wheel- heated- with shift paddles, Front seats with height adjustment, Vehicle class differentiation - 2GA-, Without surface protection- with additional transport protection measures, Drawer under right front seat, No German text in language code de_VW, Multi-color Digital Cockpit Pro- selection of different info profiles possible, Park Assist with Park Distance Control, Without folding table on front seat backrest, Reduced price, Safety-optimized front head restraints, 6 speakers, Fuel system for fuel-injected SI engine, Disc brakes in rear, Without trailer hitch, Pedestrian Monitoring, Standard battery/alternator capacity, Left-hand drive, Start-stop system with regenerative braking, 2 LED reading lights in front and 2 in rear, Instrument cluster with electronic speedometer- odometer and trip odometer- tachometer, Mobile phone interface, Laminated safety glass windshield- heat-insulating, Exterior mirror housings in roof color, Air Care Climatronic 2 zone automatic climate control with enhanced air filter with activated carbon, Preparation for We Connect and We Connect Plus or VW Connect and VW Connect Plus, Without auxiliary heater/parking heater, Without extended safety system, Standard pedal cluster, Electronic engine sound, Wheelbase, Travel Assist- Lane Assist and Emergency Assist, Without dynamic road sign display, ISOFIX anchorage points (mounting fixture for 2 child seats on rear bench seat), Standard manufacturing sequence, Rain sensor, Equipment options subset for Denmark

PICTURES



Picture viewer: <https://fm.bilsalg.dk/business/picturebrowser?t=full&guid=f3b95eae-a723-47ec-a8ef-9b971fdbdb3f&carid=22561830>

OVERVIEW OF DAMAGES AND SHORTAGES

No damages or shortages

ELECTRICAL AND MECHANICAL CONDITION

N° LOCATION	TYPE	NOTES
1	Is the car drivable	Yes