

VEHICLE DESCRIPTION - Audi Q2 Prestige 1.5 35 TFSI



First registration date
5/2024

VIN:
WAUZZZGA4RA059847

Colour:
Gray Metallic Normal gloss

Mileage (km):
30.574

Gear:
Automatic (7 Gears)

Fuel type:
Gasoline

Body type:
SUV

Number of doors:
5

Drive type:
FWD

Model year:
2020

Engine power:
110 kW

Number of seats:
5

Engine size (cc)
1498

Interior:

VEHICLE DETAILS

Number of keys:
2

Number of license plates:
2

Registration certificate:
Part 1 & 2 present

Service documentation:
No

Inspection date:
16-06-2026

Last service (year/month):

Mileage (km) at last service:

SUMMARY OF THE VEHICLE'S CONDITION

Is the car in a driveable condition:
Yes

Legal tire tread (minimum 1.6 mm):
Yes

WHEELS

 TYPE	SEASON	BRAND	POSITION	RIM	SIZE	TREAD
Fitted	Summer tires		Front Left	Alloy rim	17"	6 mm
Fitted	Summer tires		Rear Right	Alloy rim	17"	6 mm
Fitted	Summer tires		Rear Left	Alloy rim	17"	6 mm
Fitted	Summer tires		Front Right	Alloy rim	17"	6 mm

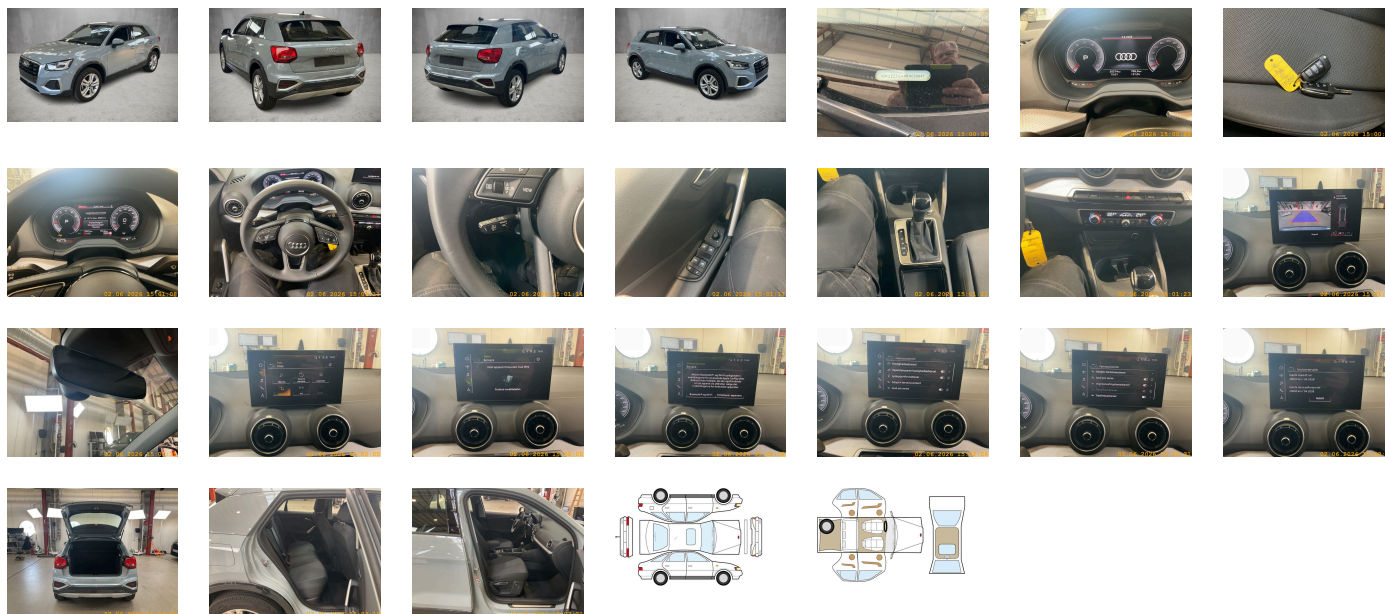
Legal tire tread (minimum 1.6 mm):

Yes

ACCESSORIES

Tires 215/55 R17 94V, Model name as per new output designation, Without fire extinguisher, Audi pre sense front for adaptive cruise control, Without interior trim, Smartphone interface, S tronic, Headlining in cloth in specific color, Without vehicle inlet, Shock absorption in front, Manual luggage compartment lid, Transit coating (type 1), Exterior mirrors- electrically adjustable- heated and folding- automatically dimming on both sides, Equipment package for Denmark, Without additional front underbody guard, Battery 420 A (70 Ah), First-aid kit with warning triangle, Rear trim panel (ECE), Internal control code, Part set without country-specific prescriptive standard, Carrier frequency 433.92 MHz-434.42 Mhz, Refrigerant R1234yf, Interior mirror- automatically dimming- frameless, Lane departure warning, Remote control key- without Safelock, Windshield with gray tinted sunshield, Extended and proactive pedestrian and cyclist protection, Without antenna amplifier, Without heat accumulator/auxiliary heater, Audi connect navigation & infotainment, Driving on the right, Comfort package plus, Suspension range 03 installation control only- no requirement forecast, Interior lighting, Bumpers- advanced- in contrasting paint finish, Comfort center armrest- front, Floor mats- front and rear, Digital Audio Broadcasting, Audi phone box light, Side airbags- front and head airbag system, Seat belt reminder, Omission of roof rails, Standard trim strips, LED headlights, ISOFIX child seat mounting for the front passenger seat, Door sill trims with aluminum inlays- front, Without customized installation, Tires without specification of tire brand, Audi AG, Without Storage and Luggage Compartment package and 12V socket in the rear, Without ECO function, Without electric motor (hybrid), Adaptive cruise control, Without special body measures, Advanced driver attention & drowsiness monitor, Tire repair kit, Without partition, 6 loudspeakers, Standard climatic zones, Camera-based traffic sign recognition, Electronic Stabilization Control ESC, No special purpose vehicle- standard equipment, Standard suspension, Child-proof lock- electrically operated, 4-cylinder SI engine 1.5 l unit 05E.D, Airbags- front, front passenger airbag can be deactivated, Without roof insert (standard roof), Installation differentiation for transmission DQ200 -- vehicle components --, Rear window wiper and washer system with intermittent control, Assist package Park, Without head-up display, SI engine, Electronic immobilizer, LongLife Service Regime, Seat heating- front, Without headlamp washer system, Without alternative drive system, Without charging cable, Separate daytime running light, Standard rear seat release, Standard-production quality, Three rear head restraints, Vehicle class differentiation -GA0-, Exterior mirrors on the right- (large field of view)- convex, Roof spoiler, Hold assist, Internal control code, SWIN management, Washer fluid level indicator, Rear lights, Script cloth, Rear floor panel module- type 7, Without additional tires, Audi virtual cockpit, Exhaust tailpipes, Activated carbon canister (Evaporative Emission Control System (EVAP)), Parking system plus, Non-smoker's package, Rear seat backrest- folding, With special labels safety certificates for Denmark, Sideblades in body color, Without lane change assist, Standard seats- front, Audi connect remote & control (for MMI navigation plus), Internal control code, Standard rear axle, Wheels- 5-twin-spoke- 7.0J x 17- 215/55 R17 tires, Top infotainment system High (MIB3), No self-collection, Operating permit- alteration, Without decorative films/emblems, Without refrigerator/glove compartment cooling system, Labels in English and German, Rear and side windows with heat-insulating glazing, Basic equipment variant, Front-wheel drive, Without Audi drive select, Type approval country Denmark, Not hot country, Progressive steering, Control of special edition prices, Without wind deflector, Statutory emergency call, 4-cylinder SI engine 1.5 l/110 kW TSI base engine is TJ7/N09/T9F/T57/T0D, Disk brakes- front- 15-inch, Weight range 3 installation control only- no requirement forecast, Left exterior mirror- aspherical, Without preparation for VTS (vehicle tracking system), Alternator 140 A, Without leather, Vehicles with special upgrade measures, Special identification label (EU), Manual in Danish, 5 doors, Rear fog lamps, Service indicator 30 000 km or 2 years (variable), No special edition, Without backrest release for front seats, Initial standard fuel filling, Brake pad wear indicator, Front license plate carrier, 4-way lumbar support for the front seats, Standard wheel bolts, Reversing camera, Adhesive film, Without neck heating, Regional code " ECE " for radio, Tire pressure loss indicator, Without rear stabilizer bar, Deluxe automatic air conditioning, Emission standard- WLTP3 M1- N1-I//EU6EA, Control of series production, Preparation for trailer hitch, Front stabilizer bar, Front passenger seat- height-adjustable, Standard, Without light control, Internal control code, Without folding table on front seat backrest, Head restraints- front, Vehicle tool kit, Without special color trim, advanced, Inlays- diamond paint finish- Silver Gray, Luggage compartment mat, Fuel system for fuel-injected SI engine, Disk brakes- rear- 15-inch, Standard battery/alternator capacity, Left-hand drive, Start-stop system with recuperation, Instrument cluster- km/h speedometer, Production wheels, Without extended safety system, Two-tone horn, Exterior mirror housings in body color, Box, Gearshift/selector lever handle, With multifunction camera, Without auxiliary heater/parking heater, Leather steering wheel- 3-spoke with multifunction plus, Standard pedal cluster, Navigation preparation, Wheelbase, ISOFIX and top tether for outer rear seats, Standard manufacturing sequence, Equipment options subset for Denmark, Window controls

PICTURES



Picture viewer: <https://fm.bilsalg.dk/business/picturebrowser?t=full&guid=79eee6f8-afa5-4e06-9d02-ff58984a8d08&carid=22549095>

OVERVIEW OF DAMAGES AND SHORTAGES

No damages or shortages

ELECTRICAL AND MECHANICAL CONDITION

N° LOCATION	TYPE	NOTES
1	Is the car drivable	Yes