

VEHICLE DESCRIPTION - Škoda Fabia Selection 1.0 TSI



First registration date:
5/2024

VIN:
TMBER9PJ1R4040169

Colour:
Black Metallic Normal gloss

Mileage (km):
20.369

Gear:
Automatic (7 Gears)

Fuel type:
Gasoline

Body type:
Hatchback

Number of doors:
5

Drive type:
FWD

Model year:
2021

Engine power:
85 kW

Number of seats:
5

Engine size (cc):
999

Interior:

VEHICLE DETAILS

Number of keys:
2

Number of license plates:
2

Registration certificate:
Part 1 present

Service documentation:
Yes

Inspection date:
23-06-2026

Last service (year/month):
2026/5

Mileage (km) at last service:
20.009

SUMMARY OF THE VEHICLE'S CONDITION

Is the car in a driveable condition:
Yes

Legal tire tread (minimum 1.6 mm):
Yes

WHEELS

TYPE	SEASON	BRAND	POSITION	RIM	SIZE	TREAD
Fitted	Summer tires		Front Left	Alloy rim	15"	5 mm
Fitted	Summer tires		Rear Right	Alloy rim	15"	5 mm
Fitted	Summer tires		Rear Left	Alloy rim	15"	5 mm
Fitted	Summer tires		Front Right	Alloy rim	15"	5 mm

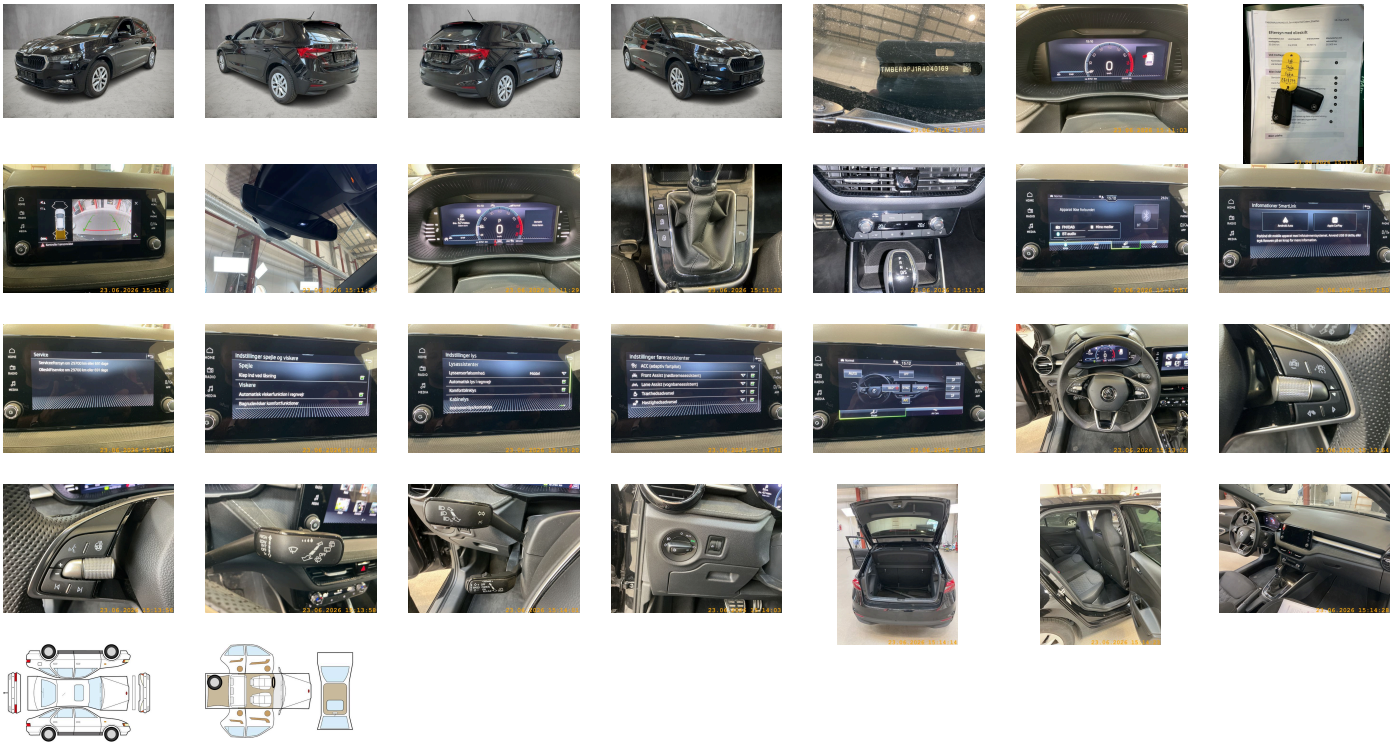
Legal tire tread (minimum 1.6 mm):

Yes

ACCESSORIES

Without navigation device, Front and rear windows electric (auto up/down function for all windows), Suspension range 05 installation control only- no requirement forecast, Vehicle class differentiation -6VN-, Hand brake lever handle in leather, Without delivery equipment, Gearshift knob/handle in leather, Without drawers under front seats, Without fire extinguisher, Lower decorative inserts, Manually adjustable lumbar support in front seats, Acoustics package "Standard", Front stabilizer bar, without USB in interior rear view mirror, Preparation for tow bar, Forward collision warning incl. autonomous emergency braking- for adaptive cruise control "high", 7-speed automatic transmission, Additional front underbody guard, Headlamp washer system, Seat trim covers in fabric, Separate daytime running light with automatic headlight control and manual Coming and Leaving Home feature, Exterior mirrors- electr. adjustable- heated - electrically foldable- automatic dimming - only driver, Axial and vertical adjustable steering column, Scuff plates in door apertures, Breakaway interior rearview mirror- auto-dimming, LED SBBR Low LED, Rear overhang- short, Part set without country-specific prescriptive standard, Carrier frequency 433.92 MHz-434.42 Mhz, Refrigerant R1234yf, Luggage compartment lighting, Nameplate set in basic style, Extended and proactive pedestrian and cyclist protection, Curb weight range 1, Antenna for FM reception only, Without heat accumulator/auxiliary heater, Driving on the right, Luggage compartment cover, Wheel bolts with anti-theft protection (unlockable), Airbag on driver and front passenger side- knee airbag on driver side- with front passenger airbag deactivation, Rear floor panel module- type 1, DAB - Digital radio reception, Center armrest in front, Textile floor mats, Battery 380 A (59 Ah) EFB+, Standard paint coating, Seatbelt warning - front + rear seats, Head restraints for front seats, 3-point seat belts in front- with pretensioner/lap belt pretensioner and height adjustment, Without additional seals outside, Alloy wheels "ROTARE" silver 5-5J x 15" - 4 pcs, Tires without specification of tire brand, Adaptive cruise control (with "follow-to-stop") and speed limiter, Without additional side body covers (stone guard), Two reading lights in front- two in rear, Advanced driver attention & drowsiness monitor, Body-colored bumpers, Breakdown kit, Without partition, 3-cylinder SI engine 1.0 l/85 kW TSI base engine is TJ4/T0R/T26/T0M/T1D/T6A, Rear shock absorption, "SUNSET", Rear fog lamp for driving on the right, Standard climatic zones, With dynamic road sign display, Tires 185/65 R15 88H super-low rolling resistance- generation 2, Electronic stability control (ESC), No special purpose vehicle- standard equipment, Wheelbase, Without voice control, Without storage compartment, Hill start assist, Chrome package, Without roof insert (standard roof), Installation differentiation for transmission DQ200 -- vehicle components --, Rear window wiper and washer system with intermittent control, Single-tone horn, Without socket, Rear exhaust tailpipe (standard), Electronic immobilizer, Hatchback, LongLife Service Regime, 2x USB front (typ C data), Standard bumpers, Seat heater for front seats separately controlled, Without alternative drive system, Decorative inserts, Radiator grille, Trims for alloy wheels, Without second battery, Interior ambient lighting- type 1, Rear view camera - with washer nozzle, Without adapter, Without bracket, KODA Infotainment, PARK & GO I., With UNECE CS (R155) without SU (R156), Pedal cluster, Fuel tank, "KESSY" - keyless central door lock. with engine start/-stop (without SAFE funktion), Washer fluid level indicator, Front fog lights with Corner function - lightbulb, Exterior mirrors: convex on driver side- convex on front passenger side, Leather-wrapped multi-function steering wheel- heated, "SMARTLINK" (wired and wireless connect), Adaptive Lane Assist, Activated carbon canister (Evaporative Emission Control System (EVAP)), Without storage compartment package/box, PARK DISTANCE CONTROL (Parking sensors front + rear), Non-smoker's package, Rear seat backrest split 60:40- unsplit rear seat bench, Rear axle weight- type 1, Luggage compartment mat (rubber/fabric), Net program + hook in Top Tether + elastic storage compartment in trunk, Mounting fixture in luggage compartment, Without lane change assist, Fresh air intake system with combination filter, Standard glove compartment, Standard rear axle, Without decorative films/emblems, Rear spoiler, Basic equipment variant, Fuel filler cap, Front-wheel drive, Type approval country Denmark, Driving profile selection and conventional shock absorber, Not hot country, Antifreeze up to -25 degree Celsius tolerance up to -30 degree C, Central console - cuholder "Tub", Disc brakes in front (Geomet D), Operating permit-alteration, Side airbag in front and rear with curtain airbag, E-Call+, Weight range 8 installation control only- no requirement forecast, 3rd head restraint rest, Spectacle storage compartment/bracket, Alternator 140 A, LED headlamps, Without tool kit and jack, Special identification label for EC for M1 passenger vehicles, ECO function, Child seat anchors f. child seat system i-Size- 2x top tether and child seat anchors in front on front passenger side, Manual in Danish, 4 doors, Disk brakes rear, Fuel system for fuel-injected SI engine (tropicalized), Service indicator 30 000 km or 2 years (variable), No special edition, Without backrest release for front seats, Remote Access 3 years, 3-point seat belts- outer rear with ECE label, Sports comfort seats in front, Initial standard fuel filling, Heated washer nozzles in front, Transport protection film with additional transport protection measures, Tire pressure monitoring system, Shock absorption in front, Regional code " ECE " for radio, Height - adjustable driver and co-driver seat, With umbrella, Selection, Remote Access / Pro-active service, Emission standard- WLTP3 M1- N1-I//EU6EA, Without luggage/load compartment floor, Window frame in chrome, Door and side trim panel, Dynamic, Folding grab handles at roof frame, Without light control, 3-cylinder SI engine 1.0 l unit 05C.B, Virtual Cockpit, Sun visors with mirror- airbag label on front passenger sun visor, 4 speakers front + 2 rear incl. koda Surround, Preparation for roof load rack, Key for locking system with remote control, "Standard Plus" version, Left-hand drive, Start-stop system with regenerative braking, Instrument cluster- km/h speedometer, Bluetooth, Heat-reflecting windshield, Without extended safety system, Outside door mirrors and door handles in body color, Climatronic with impact pressure control- CFC-free, Without additional malfunction display, Power steering, With multifunction camera, Without auxiliary heater/parking heater, Headlight range control, Vent, Standard manufacturing sequence, Windshield wiper intermittent control with light/rain sensor, Equipment options subset for Denmark

PICTURES



Picture viewer: <https://fm.bilsalg.dk/business/picturebrowser?t=full&guid=16049798-9f72-4079-9262-4a05f48fe5b2&carid=22549040>

OVERVIEW OF DAMAGES AND SHORTAGES

No damages or shortages

ELECTRICAL AND MECHANICAL CONDITION

N°	LOCATION	TYPE	NOTES
1	Is the car drivable	Yes	