

VEHICLE DESCRIPTION - Škoda Fabia Essence 1.0 MPI



First registration date:
5/2024

VIN:
TMBEE6PJ4P4111842

Colour:
Dark gray Metallic Normal gloss

Mileage (km):
19.084

Gear:
Manual (5 Gears)

Fuel type:
Gasoline

Body type:
Hatchback

Number of doors:
5

Drive type:
FWD

Model year:
2021

Engine power:
59 kW

Number of seats:
5

Engine size (cc):
999

Interior:
Black Fabric

VEHICLE DETAILS

Number of keys:
2

Number of license plates:
2

Registration certificate:
Part 1 & 2 present

Service documentation:
Yes

Inspection date:
01-05-2026

Last service (year/month):
2026/2


Mileage (km) at last service:
17.812

SUMMARY OF THE VEHICLE'S CONDITION

Is the car in a driveable condition:
Yes

Legal tire tread (minimum 1.6 mm):
Yes

WHEELS

 TYPE	SEASON	BRAND	POSITION	RIM	SIZE	TREAD
Fitted	All year tires		Front Left	Steel rim	15"	5 mm
Fitted	All year tires		Rear Right	Steel rim	15"	5 mm
Fitted	All year tires		Rear Left	Steel rim	15"	5 mm
Fitted	All year tires		Front Right	Steel rim	15"	5 mm

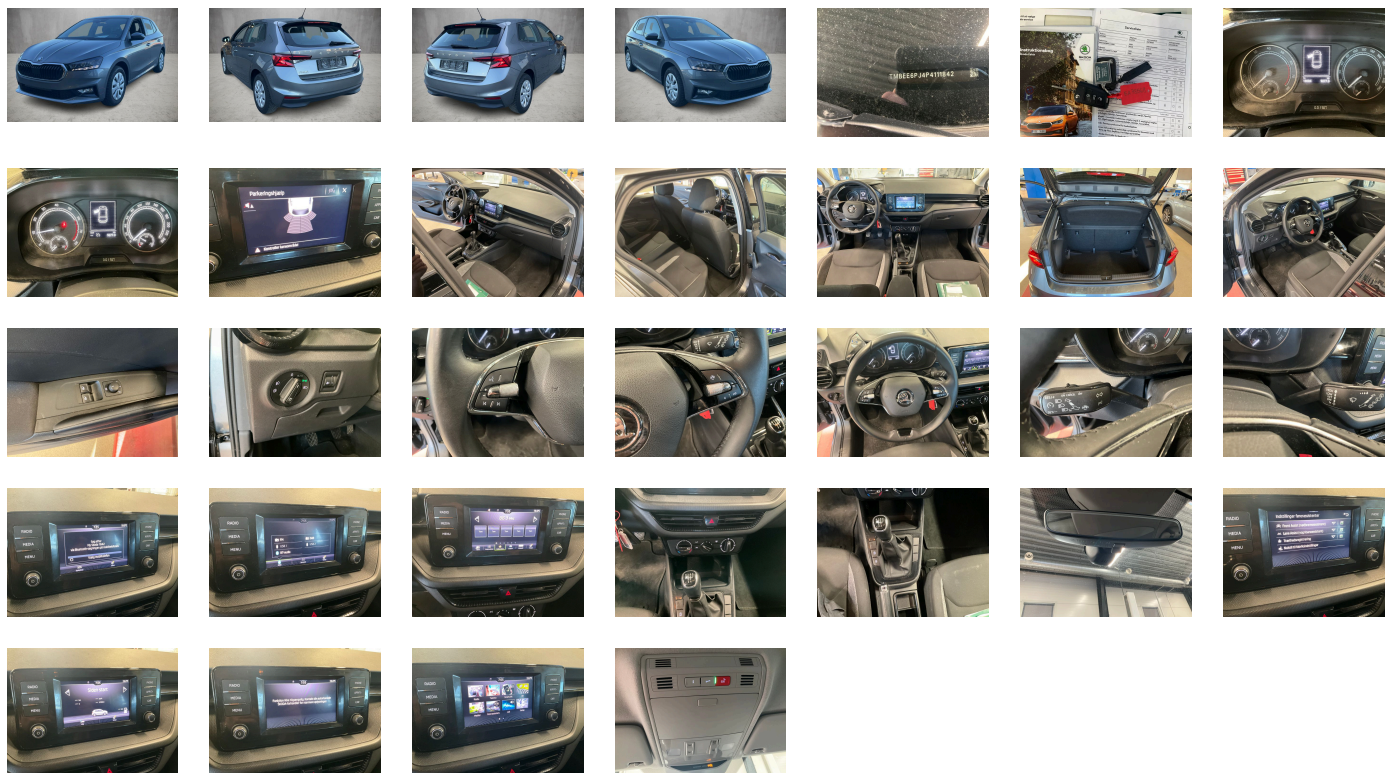
Legal tire tread (minimum 1.6 mm):

Yes

ACCESSORIES







Driving on the right, Standard version, Standard equipment, Part set without country-specific prescriptive standard, Type approval country Denmark, Operating permit- alteration, 3-cylinder SI engine 1.0 l/59 kW MPI base engine is T5Y/T2D, Without ECO function, Remote Access / Pro-active service, DRIVER ALERT SYSTEM, Regional code " ECE " for radio, No special edition, Standard paint coating, CO2 variant, No special purpose vehicle- standard equipment, 5-speed manual transmission, Shock absorption in front, Without bracket, Curb weight range 1, Rear axle weight- type 1, Radio Swing 6-5", Battery 320 A (49 Ah), Tires 185/65 R15 88H super-low rolling resistance- generation 2, Without camera systems/accident sensors, Refrigerant R1234yf, without USB in interior rear view mirror, Hatchback, Left-hand drive, Suspension range 03 installation control only- no requirement forecast, Without adapter, Without umbrella(s), E-Call+, Seat trim covers in woven fabric, Small leather package (2-spoke MU-FU leather steering wheel-leather gear knob- leather handbrake), Height adjustable driver and co-driver seat with mechanic lumbar support, Without storage compartment package/box, LongLife Service Regime, Without voice control, Service indicator 30 000 km or 2 years (variable), Chrome package, With multifunction camera, Without drawers under front seats, Without add. lights (interior lighting), Without dynamic road sign display, DAB - Digital radio reception, Standard seats in front, Lower decorative inserts, Control of logistics 2, 3-cylinder SI engine 1.0 l unit 05C.1, Hill start assist, Instrument cluster- km/h speedometer, 2x USB front (typ C data), Standard pedal cluster, Extended and proactive pedestrian and cyclist protection, Tires without specification of tire brand, UN-ECE Delta (DK), Remote Access 1 year, UN-ECE, Front stabilizer bar, 4 doors, Wheelbase, Installation differentiation for transmission MQ 200 -- vehicle components --, Standard manufacturing sequence, Fuel tank, Without alternative drive system, Nameplate set in basic style, Standard rear axle, Rear exhaust tailpipe (standard), Textile floor mats, Manual in Danish, Weight range 8 installation control only- no requirement forecast, Standard climatic zones, Rear overhang- short, Electronic stability control (ESC), Fuel system for fuel-injected SI engine (tropicalized), Antifreeze up to -25 degree Celsius tolerance up to -30 degree C, Without trailer hitch, Special identification label for EC for M1 passenger vehicles, Activated carbon canister (Evaporative Emission Control System (EVAP)), Breakdown kit, Rear shock absorption, Drum brakes in rear, Wheel trims, Power steering, Standard wheel bolts, Additional front underbody guard, Without tool kit and jack, Front-wheel drive, Disc brakes in front (Geomet D), Initial standard fuel filling, Without delivery equipment, Axial and vertical adjustable steering column, Vehicle class differentiation - 6VN-, Without "drive select", Body-colored bumpers, Standard bumpers, Fresh air intake system with combinationfilter, Fuel filler cap, Multi-function steering wheel, Child seat anchors f. child seat system i-Size- 2x top tether and child seat anchors in front on front passenger side, Without partition, Central console - cuholder "Tub", Without roof insert (standard roof), Without luggage/load compartment floor, Without backrest release for front seats, Door and side trim panel, Height - adjustable driver and co-driver seat, Rear seat backrest split 60:40- unsplit rear seat bench, Without storage compartments in trunk, 3-point seat belts in front- with pretensioner/lap belt pretensioner and height adjustment, 3rd head restrain rest, Preparation for roof load rack, Luggage compartment cover- folding, Without additional noise suppression measures for passenger compartment, 3-point seat belts- outer rear with ECE label, Without storage compartment, Without seat heater, Emission standard EU6 AP, Heat-reflecting windshield, Central locking w/ radio remote control-interior controls- without SAFELOCK, Side and rear windows in heat-insulatingglass, Breakaway interior rearview mirror- dimming, Rear floor panel module- type 1, Power windows in front- mechanical window regulators in rear, Airbag on driver and front passenger side- without knee airbag- with front passenger airbag deactivation, Side airbag front with head airbags, Standard decorative trims, Standard glove compartment, Steel wheels "CALISTO" 5-5J x 15" - 4pcs, Carrier frequency 433.92 MHz-434.42 Mhz, Exterior mirrors: convex on driver side- convex on front passenger side, Rear spoiler, Transport protection film with additional transport protection measures, Folding grab handles at roof frame, Without decorative inserts, Sun visors with mirror- airbag label on front passenger sun visor, Front head restraints, Without fire extinguisher, Without additional side body covers (stone guard), Center armrest in front, Outside door mirrors and door handles inbody color, Without decorative films/emblems, Lane Assist, Radiator grille, Forward collision warning incl. autonomous emergency braking- without adaptive cruise control, Vent, Without tie down straps/net/pocket, Hand brake lever handle in leather, Gearshift knob/handle in leather, Without luggage compartment floor covering, Without additional seals outside, Exterior mirrors- electr. adjustable- heated - painted in exterior colour (forMC colored black), Electronic immobilizer, Without socket, Without heat accumulator/auxiliary heater, Tire pressure monitoring system, Start-stop system with regenerative braking, Without protective film for scuff plate, Spectacle storage compartment/bracket, Manually adjustable lumbar support in front seats, Without navigation device, Without extended safety system, Parking sensors rear, Without lane change assist, Without second battery, Alternator 140 A, Without light control, LED headlamps, Separate daytime running light with automatic headlight control and manual Coming and Leaving Home feature, Rear window wiper and washer system with intermittent control, Windshield wiper intermittent control with light sensor, Key for locking system with remote control, Headlight range control, 4 speakers front, Two reading lights in front- two in rear, Rear fog lamp for driving on the right, Cruise control with Speedlimiter, Rear combination lamp, Front fog lights - lightbulb, Washer fluid level indicator, Headlamp washer system, Single-tone horn, Antenna for FM reception only, Not hot country, Manually controlled air conditioning system, Luggage compartment lighting, Without additional malfunction display, Non-smoker's package, Without auxiliary heater/parking heater, Seatbelt warning - front + rear seats, "MAXI DOT" (KI Mid), Without heated washer nozzles, Without "Multimedia" in vehicle, Bluetooth, Equipment options subset for Denmark

PICTURES



Picture viewer: <https://fm.bilsalg.dk/business/picturebrowser?t=full&guid=9286257b-644f-403f-88ad-7126e34759ef&carid=22398662>

OVERVIEW OF DAMAGES AND SHORTAGES

N°	LOCATION	TYPE	SEVERITY	INSURANCE	NOTES	DAMAGE GROUP
1	R. Front Rim	Scratch	C5		Reporting needed	
						
2	Front Bumper	Scratch	C4		Reporting done	
						
3	L. Rear Quarter Panel	Scratch	C4		Reporting done	
						

Severity explanation:

C0 = No damage / C1 = Simple preparation / C2 = Minor preparation needed / C3 = Can be smart repaired / C4 = Repair/spray paint / C5 = Need replacement

ELECTRICAL AND MECHANICAL CONDITION

N°	LOCATION	TYPE	NOTES
1	Is the car drivable	Yes	