

VEHICLE DESCRIPTION - Audi Q5 S Line Midnight Edition 2.0 50 TFSI e PHEV



First registration date: 3/2024	VIN: WAUZZZFY3R2064353
Colour: Black Metallic Normal gloss	Mileage (km): 95.991
Gear: Automatic (7 Gears)	Fuel type: Hybrid petrol
Body type: SUV	Number of doors: 5
Drive type: 4WD	Model year: 2020-2025
Engine power: 220 kW	Number of seats: 5
Engine size (cc): 1984	Interior: Dark grey Partial leatherette

VEHICLE DETAILS

Number of keys: 2	Number of license plates: 2	Registration certificate: Part 1 present	Service documentation: No
Inspection date: 23-04-2026	Last service (year/month):	Mileage (km) at last service:	

SUMMARY OF THE VEHICLE'S CONDITION

Is the car in a driveable condition: Yes	Legal tire tread (minimum 1.6 mm): Yes
--	--

WHEELS

 TYPE	SEASON	BRAND	POSITION	RIM	SIZE	TREAD
Fitted	Summer tires		Rear Left	Alloy rim	19"	5 mm
Fitted	Summer tires		Front Right	Alloy rim	19"	6 mm
Fitted	Summer tires		Front Left	Alloy rim	19"	6 mm
Fitted	Summer tires		Rear Right	Alloy rim	19"	5 mm

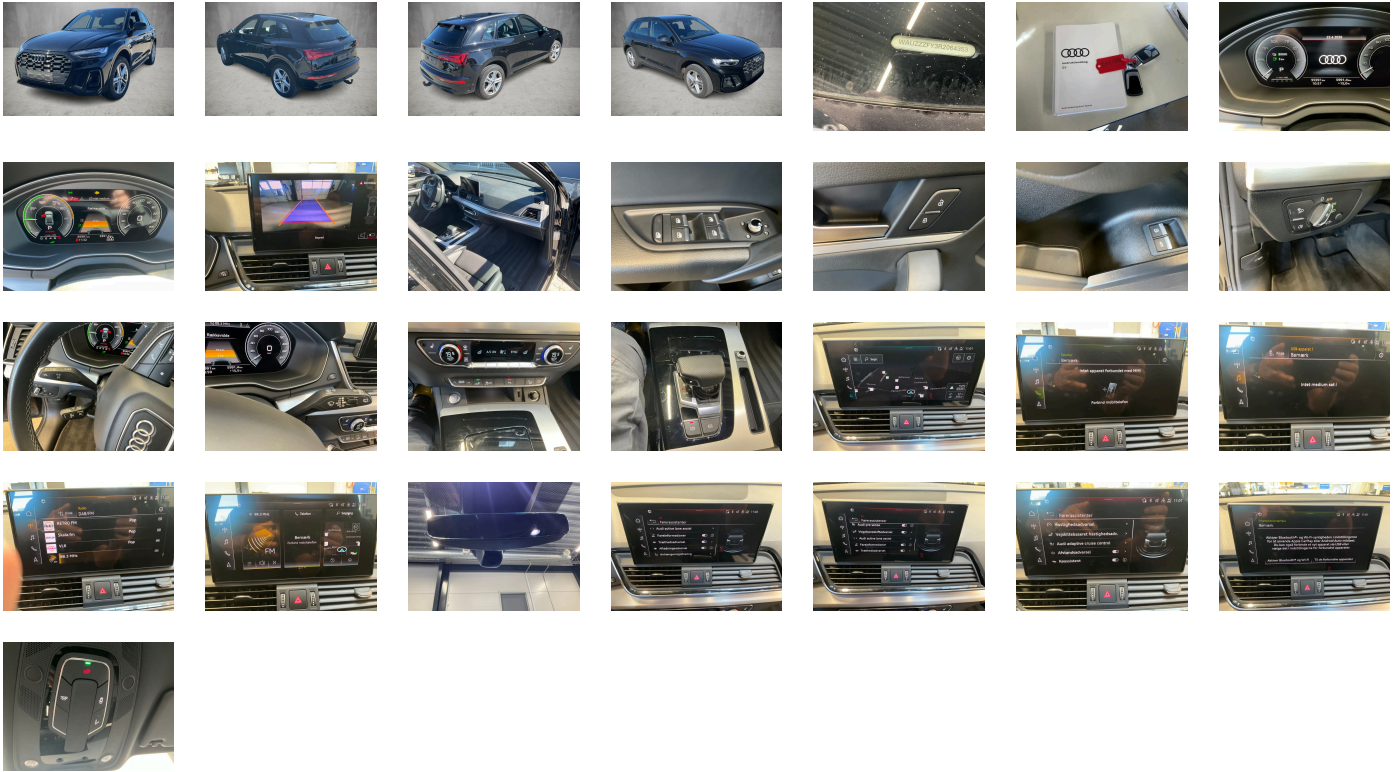
Legal tire tread (minimum 1.6 mm):

Yes

ACCESSORIES









Exterior mirrors- electrically adjustable- heated and folding- automatically dimming on both sides, Electronic immobilizer, Without heat accumulator/auxiliary heater, Gearshift/selector lever handle, Without preparation for VTS (vehicle tracking system), Without leather, Vehicle class differentiation -FY0/FYF-, Tire pressure loss indicator, Recuperation, 4-way lumbar support for the front seats, MMI navigation plus with MMI touch, Audi pre sense rear, Parking system plus, Side assist, Without mains cable for industrial connector for the e-tron charging system, Charging cable for public charging- mode 3- 11 kW (AC), Without alternator, Matrix LED headlights with dynamic light sequencing and dynamic turn signal, Matrix LED headlights with dynamic light sequencing and dynamic turn signal, Separate daytime running light, Adaptive cruise control, LED rear lights with dynamic light sequencing and dynamic turn signal, Headlight cleaning system, Two-tone horn, Not hot country, 3-zone deluxe automatic air conditioning, Without integrated toll system, Non-smoker version, Without auxiliary heater/parking heater, Seat belt reminder, Audi virtual cockpit, Without additional warning lights, Audi sound system, Audi phone box light, Equipment options subset for Denmark, Data module- Europe, Battery 380 A (68 Ah), Reversing camera, Refrigerant R1234yf, Without head-up display, Box, Left-hand drive, 4-cyl. SI engine 2.0 l/195 kW- hybrid- turbo FSI- system output 220 kW base engine is T4H, SWIN management, Without wall mount, Transit coating (type 2), Sequence cloth/leather combination, Assist package City, Assist package Tour, Convenience key with sensor-controlled release of lugg. comp. lid- electric luggage compartment lid, Matrix LED headlights and LED rear lights and headlight cleaning system, Storage and Luggage Compartment package, Service indicator 30 000 km or 2 years (variable), With multifunction camera, Clear glass, Ambient Lighting package plus, Camera-based traffic sign recognition, Without step, Digital Audio Broadcasting, Electromechanical power steering, Sport seats- front, Control of special edition prices, 4-cylinder SI engine 2.0 l unit 06N.E, Hold assist, Instrument cluster- km/h speedometer, Without garage door opener, Standard pedal cluster, Standard electric, Extended pedestrian protection, Door sill trims with aluminum inlays- front- illuminated- S logo, Without danger alarm system, Tires without specification of tire brand, Equipment package for Denmark, Comfort package II for Denmark, Business package for Denmark, Equipment package for Germany, Interior S line, Internal control code, Internal control code, Internal control code, Standard, Standard manufacturing sequence, tiptronic, Weight category front axle weight range 7, Hybrid propulsion system PHEV, With special labels safety certificates for Denmark, Fuel tank, Without ignition/starter switch locking system- without steering lock, Floor mats- front and rear, Manual in Danish, Weight range 12 installation control only- no requirement forecast, Standard climatic zones, Basic, Fuel system for SI engine with direct injection (FSI), Standard suspension, Trailer hitch, Special identification label (EU), Tire repair kit, Disc brakes in rear- 17-inch (ECE), Wheel bolts- anti-theft, Standard suspension, Without additional front underbody guard, Vehicle tool kit (without vehicle jack), First-aid kit with warning triangle and high-visibility vests, Installation parts for four-cylinder engine, Leather steering wheel- 3-spoke with multifunction plus, quattro, Disk brakes- front- 17-inch (ECE), Increase in initial standard fuel filling, Axial and vertical adjustable steering column, Audi connect key, Insert for the filling up of unleaded fuel, Audi drive select, Labels in English and German, Reinforced bumpers, Loading sill protector- stainless steel, Without additional tires, Omission of model name and output/technology logo, Electric motor (hybrid electric vehicle)- total system output 220 kW- unit 0ED.D, ISOFIX child seat mounting and top tether for the outer rear seats, Partition net, Without roof insert (standard roof), Loading floor, Without child seat anchora in front (ISOFIX), Front seats- manually adjustable, Passenger car design, Rear seat bench plus, Roof rails in Black, Luggage compartment cover, Without roll-up sunshade, Seat heating- front, Without seat ventilation/massage seat, Luggage compartment lid- electrically opening and closing, Windshield with heat-reflecting glass and acoustic glass, Manual child safety lock, Convenience key- without Safelock, Rear and side windows with heat-insulating glazing, Interior mirror- automatically dimming- frameless, Beverage holders, Airbags- front, front passenger airbag can be deactivated, Emission standard- WLTP3 M1- N1- l//EU6EA, Side airbags- front and head airbag system, Black Styling package, Without special body measures, Carrier frequency 433.92 MHz-434.42 Mhz, Roof spoiler, Adhesive film, Left exterior mirror- aspherical, Inlays- Matt Brushed Aluminum, Sun visors- front, Head restraints- front, Without fire extinguisher, Comfort center armrest- front, Exterior mirror housings in Black, Emblems, Audi active lane assist, Audi pre sense city, Headlining in cloth- Black, Luggage compartment mat, Right exterior mirror- aspherical, Rear trim panel (ECE), Without front license plate carrier, Audi AG, Standard-production quality, Driving on the right, No self-collection, Category 0, S line, Part set without country-specific prescriptive standard, Type approval country Denmark, Wheels- 5-twin-spoke star- S design- gloss turned finish- 8.0J x 19- 235/55 R19 tires, Operating permit- alteration, Regional code " ECE " for radio, Charging socket AC type 2, Without e-tron charging system compact (AC)- without mains cable for domestic connector, No special edition, Control of series production, Without AdBlue tank, Basic equipment variant, Preparation for functions on demand, Production wheels, Country group A, No special purpose vehicle- standard equipment, Comfort stationary air conditioning, Without antenna amplifier, quattro with ultra technology, Acoustic vehicle alerting system, Vehicles with special upgrade measures, Accent surfaces- Gloss Black, Without alcohol interlock, Without Car2X, S tronic (for all-wheel drive), Tires 235/55 R19 101W, Audi connect navigation & infotainment, Smartphone interface, Audi connect emergency call & service with Audi connect remote & control, SI engine

PICTURES



Picture viewer: <https://fm.bilsalg.dk/business/picturebrowser?t=full&guid=004950c2-802b-4226-99e5-e3d39825fa19&carid=22316596>

OVERVIEW OF DAMAGES AND SHORTAGES

N°	LOCATION	TYPE	SEVERITY	INSURANCE	NOTES	DAMAGE GROUP
1	L. Front Tyre	Defect	C5		Reporting needed	
						
2	L. Front Rim	Scratch	C5		Reporting needed	
						
3	L. Rear Rim	Scratch	C4		Reporting needed	
						
4	L. Rear Door	Dent	C3			
						
5	L. Rear door, Window Rubber Band	Dent	C3			

Severity explanation:

C0 = No damage / C1 = Simple preparation / C2 = Minor preparation needed / C3 = Can be smart repaired / C4 = Repair/spray paint / C5 = Need replacement

ELECTRICAL AND MECHANICAL CONDITION

N°	LOCATION	TYPE	NOTES
1	Is the car drivable	Yes	