

VEHICLE DESCRIPTION - VW T-ROC Style Plus 1.5 TSI



First registration date:
12/2023

VIN:
WVGZZA1ZRV049441

Colour:
Dark gray Metallic Normal gloss

Mileage (km):
61.312

Gear:
Automatic (7 Gears)

Fuel type:
Gasoline

Body type:
SUV

Number of doors:
5

Drive type:
FWD

Model year:
2021-2025

Engine power:
110 kW

Number of seats:
5

Engine size (cc):
1498

Interior:
Black Partial leatherette

VEHICLE DETAILS

Number of keys:
2

Number of license plates:
2

Registration certificate:
Part 1 & 2 present

Service documentation:
No

Inspection date:
12-06-2026

Last service (year/month):


Mileage (km) at last service:

SUMMARY OF THE VEHICLE'S CONDITION

Is the car in a driveable condition:
Yes

Legal tire tread (minimum 1.6 mm):
Yes

WHEELS

 TYPE	SEASON	BRAND	POSITION	RIM	SIZE	TREAD
Fitted	Summer tires		Front Left	Alloy rim	17"	6 mm
Fitted	Summer tires		Rear Right	Alloy rim	17"	6 mm
Fitted	Summer tires		Rear Left	Alloy rim	17"	6 mm
Fitted	Summer tires		Front Right	Alloy rim	17"	6 mm

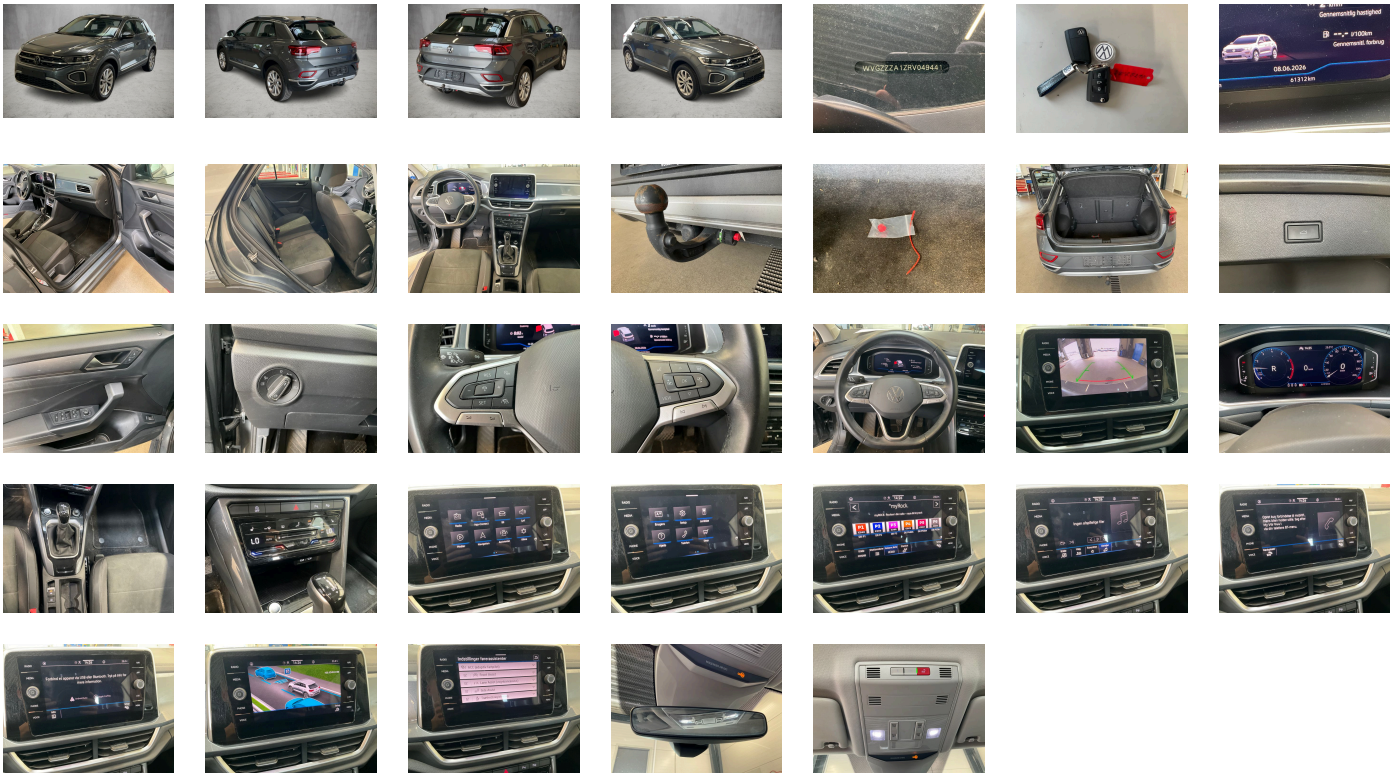
Legal tire tread (minimum 1.6 mm):

Yes

ACCESSORIES



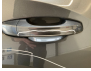
Trailer hitch, Easy Open package without SAFELock, Radio "Ready 2 Discover" incl. "Streaming & Internet", Winter package, VE: IQ.DRIVE package without proactive passenger protection system forces SW9, No German text in language code de_VW, VE: Special goodwill 2023 II, Preparation for We Connect and We Connect Plus or VW Connect and VW Connect Plus, No special edition, Without exterior ambient lighting, Standard wheel bolts, Vehicle class differentiation -2GA-, Rear exhaust tailpipe (standard), Hill start assist, Emission standard EU6 AP, Removable and lockable trailer hitch, Driver and front passenger airbag with front passenger airbag deactivation, Activated carbon canister (Evaporative Emission Control System (EVAP)), Diversity antenna for FM reception, Exterior mirrors- power-adjustable- folding- and heated- with memory feature, Electronic engine sound, Exterior mirrors: aspherical on driver side- convex on front passenger side, Without alternative drive system, Front-wheel drive, App-Connect Wireless for Apple CarPlay and Android Auto, Comfort equipment, Autonomous Emergency Braking Front Assist (for Adaptive Cruise Control ACC up to 210 km/h), Disc brakes in rear, Battery 420 A (70 Ah), Disc brakes in front, Exterior mirror housings in roof color, Standard battery/alternator capacity, Part set without country-specific prescriptive standard, Tool kit, Electronic Stability Control w/ driver steering recommendation- ABS- ASR- EDL- EDTC and trailer stabilization, Manual in Danish, Operating voltage 12 V, Brake pad wear indicator, Automatically-heated washer nozzles in front, Without Adaptive Chassis Control, Chrome elements on rotary light switch- power mirror switch- window regulator switches, vents with chrome frames, Operating permit-alteration, Silver-anodized roof rails, Standard roof, Rear shock absorption- chassis with increased ride height, Shock absorption in front, Without UN-ECE cybersecurity & software update, Without ECO function, Dual-clutch transmission DSG DQ200, Electronic immobilizer, Decorative inserts "Deep Iron Gray" for dashboard- center console and front door trim panels, Without protective film for scuff plate, Park Assist with Park Distance Control, Without extended safety system, 2 USB-C ports in the front- 2 USB-C charging sockets on the center console in rear- charging capacity up to 45 W, Standard manufacturing sequence, Power windows, Without fire extinguisher, Pedestrian Monitoring, Standard pedal cluster, Automatic headlight control with LED separate daytime running light and exit and entry lighting, Electromechanical parking brake with Auto Hold function, No special purpose vehicle- standard equipment, Alternator 140 A, Weight range 5 installation control only- no requirement forecast, Suspension range 03 installation control only- no requirement forecast, 4-cylinder SI engine 1.5 l unit 05E.D, Adaptive Cruise Control ACC stop & go incl. speed limiter, 7-speed automatic transmission or dual-clutch transmission DSG- note: PR family EDF, Rear window wiper with intermittent control, Standard rear axle, Headliner, Asymmetric split folding rear seat backrest- with center armrest, Air Care Climatronic 2 zone automatic climate control with enhanced air filter with activated carbon, LED Plus headlamps with LED separate daytime running light, Without electric motor (hybrid), Light unit in front footwell, Instrument cluster with electronic speedometer- odometer and trip odometer- tachometer, Auto-dimming interior rearview mirror, Without decals and emblems, Hatchback, Multifunction camera, Elimination of cooling system of glove compartment, Without folding table on front seat backrest, Standard climatic zones, Without dynamic road sign display, 3 head restraints in rear, Safety-optimized front head restraints, Initial standard fuel filling, Fuel system for fuel-injected SI engine, Without special body measures, Rear view camera system, Refrigerant R1234yf, Transport protection film (minimum protection) with additional transport protection measures, Standard paint coating, Height-adjustable and removable luggage compartment floor, White ambient lighting, Without vehicle inlet, Left-hand drive, 2 LED reading lights in front and 2 in rear, Electromechanical speed-sensitive power steering, Completely folding front passenger seat backrest, High-beam control Light Assist, Without charging cable, Lumbar supports in front, Leather multi-function steering wheel- heated- with shift paddles, Driving on the right, 6 speakers, Dynamic headlight range control, Center armrest in front, Basic equipment variant, Multi-color Digital Cockpit Pro- selection of different info profiles possible, Driver alert system, Not hot country, 4-cylinder SI engine 1.5 l TSI- 110 kW, Preparation for subsequent activation: Navigation feature "Discover Media" incl. Streaming & Internet, Rear fog light on one side- back-up light on both sides, Cornering light and poor weather light, Online service- with OCU- with head unit coding- without engine immobilizer interconnection, Vehicles with special upgrade measures, Rear floor panel module- type 7, Trims for alloy wheels, 4 alloy wheels "Johannesburg" 7J x 17- diamond-turned surface, Radio, Non-smoker's package: Storage compartment and 12 V outlet in front, Regional code " ECE " for radio, Tire Pressure Monitoring System, Tires 215/55 R17 low rolling resistance, Tires without specification of tire brand, Tire Mobility Set: 12-volt compressor and tire sealant, Wheelbase, 3-point seat belts in front with height adjustment and seat belt pretensioners, Emergency call service-10-year contract duration as of initial delivery- condition: mob. phone network available, Curtain airbag system for front and rear passengers incl. side airbags in front, Gearshift knob in leather, Dark Red LED rear combination lamps, Easy Open & Close - sensor controlled luggage compartment opening and closing with remote unlocking, Service indicator 30 000 km or 2 years (variable), Warning signal and warning lamp for front and rear seat belts not fastened, 3-point seat belts with seat belt pretensioners for the outer rear seats, Inserts of front seats and outer rear seats in ArtVelours microfleece, Front seats with height adjustment, Heated front seats, Start-stop system with regenerative braking, Single-tone horn, Control of campaigns, Equipment change, Illuminated vanity mirrors in sun visors, Without voice control, Lane change system Side Assist, Travel Assist- Lane Assist and Emergency Assist, Green heat-insulating glass windows on sides and in rear, Without socket, Body-colored bumpers- radiator grille with chrome trim, Without rear stabilizer bar, Front stabilizer bar, Drawer under right front seat, Without headlamp washer system, Rain sensor, Elimination of nameplate for engine designation on luggage compartment lid, Keyless locking and starting system Keyless Access without SAFELock, Type approval country Denmark, Carrier frequency 433.92 MHz-434.42 Mhz, Without partition, Door and side trim panel in foam film- insert in leatherette, 4 doors, Digital radio reception DAB+, Without additional front underbody guard, Special identification label for EC for M1 passenger vehicles, Warning triangle, Without preparation for two-way radio installation, Surround lighting with welcome light, Sports comfort seats in front, Mobile phone interface, Retro-reflectors in all doors, LongLife Service Regime, Without heat accumulator/auxiliary heater, Laminated safety glass windshield- heat-insulating, Warning lamp for washer fluid level, Without additional tires, Without floor mats, Black door lower parts- with chrome molding, ISOFIX anchorage points (mounting fixture for 2 child seats on rear bench seat), Equipment options subset for Denmark, Without auxiliary heater/parking heater

PICTURES



Picture viewer: <https://fm.bilsalg.dk/business/picturebrowser?t=full&guid=af68d156-459c-4067-a8c4-bf55b4001ecf&carid=21639355>

OVERVIEW OF DAMAGES AND SHORTAGES

N°	LOCATION	TYPE	SEVERITY	INSURANCE	NOTES	DAMAGE GROUP
1	R. Rear Quarter Panel, List	Scratch	C5		Reporting needed	Group 1
						
2	R. Rear Door, Handle Scratch	Scratch	C4		Reporting needed	Group 1
						
3	R. Rear Door	Scratch	C4		Reporting needed	Group 1
						
4	R. Rear Quarter Panel	Scratch	C4		Reporting needed	Group 1
						

Severity explanation:

C0 = No damage / C1 = Simple preparation / C2 = Minor preparation needed / C3 = Can be smart repaired / C4 = Repair/spray paint / C5 = Need replacement

ELECTRICAL AND MECHANICAL CONDITION

N°	LOCATION	TYPE	NOTES
1	Is the car drivable	Yes	