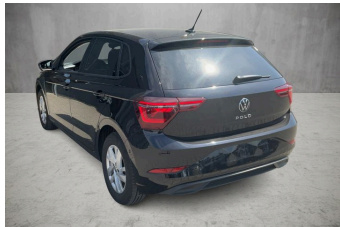


VEHICLE DESCRIPTION - VW Polo Style 1.0 TSI



First registration date
10/2023

VIN:
WWWZZAWZPU088970

Colour:
Black Metallic Normal gloss

Mileage (km):
27.741

Gear:
Automatic (7 Gears)

Fuel type:
Gasoline

Body type:
Hatchback

Number of doors:
5

Drive type:
FWD

Model year:
2021

Engine power:
70 kW

Number of seats:
5

Engine size (cc)
999

Interior:
Dark grey Fabric

VEHICLE DETAILS

Number of keys:
2

Number of license plates:
2

Registration certificate:
Part 1 & 2 present

Service documentation:
No

Inspection date:
16-06-2026

Last service (year/month):


Mileage (km) at last service:

SUMMARY OF THE VEHICLE'S CONDITION

Is the car in a driveable condition:
Yes

Legal tire tread (minimum 1.6 mm):
Yes

WHEELS

 TYPE	SEASON	BRAND	POSITION	RIM	SIZE	TREAD
Fitted	Summer tires		Front Left	Alloy rim	15"	5 mm
Fitted	Summer tires		Rear Right	Alloy rim	15"	5 mm
Fitted	Summer tires		Rear Left	Alloy rim	15"	5 mm
Fitted	Summer tires		Front Right	Alloy rim	15"	5 mm

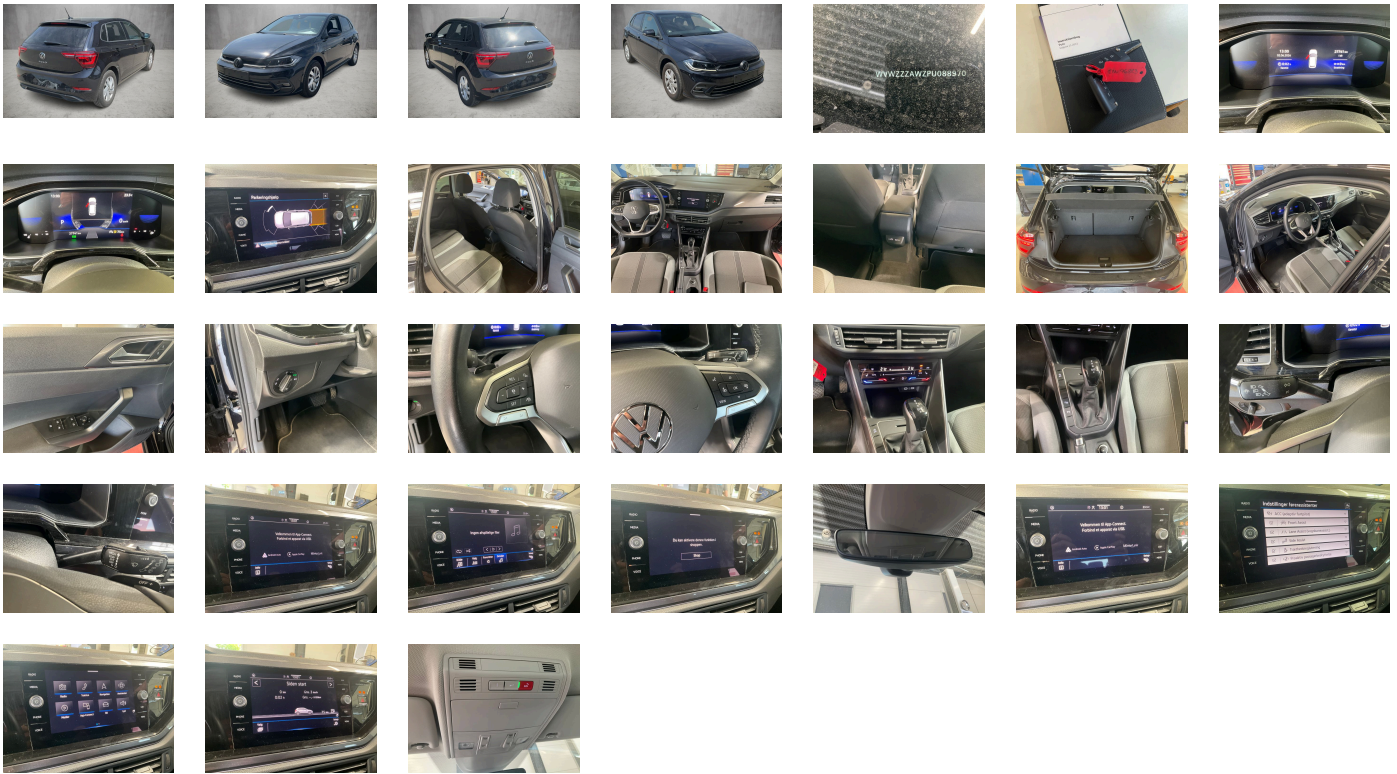
Legal tire tread (minimum 1.6 mm):

Yes

ACCESSORIES

Park & Convenience assistance package, IQ.DRIVE assistance systems package, Radio "Ready 2 Discover" incl. "Streaming & Internet", Lights & Vision package, Denmark: DK package Basic forces: WLA-WF1-4KF, Style/GTI: WLB-9AK-4KF, Life/R-Line: WLA-9AK-4KF, Preparation for We Connect and We Connect Plus, No special edition, Illuminated molding between headlamps, Standard wheel bolts, Vehicle class differentiation - 2G0- for build status Europe, Rear exhaust tailpipe (standard), Hill start assist, Emission standard EU6 AP, Without trailer hitch, Driver and front passenger airbag with front passenger airbag deactivation, Activated carbon canister (Evaporative Emission Control System (EVAP)), Diversity antenna for FM reception, Exterior mirrors- power-adjustable- folding and heated- w/ front passenger exterior mirror lowering function, Aspherical exterior mirror on driver side, Right exterior mirror- convex, Without alternative drive system, Front-wheel drive, App-Connect incl. App-Connect Wireless for Apple CarPlay and Android Auto, Style, Autonomous Emergency Braking Front Assist (for Adaptive Cruise Control ACC up to 210 km/h), Drum brakes in rear, Battery 320 A (49 Ah), Disc brakes in front (Geomet D), Body-colored exterior mirror housings and door handles, Standard battery/alternator capacity, Part set without country-specific prescriptive standard, Tool kit and jack, Electronic Stability Control w/ driver steering recommendation- ABS- ASR- EDL and EDTC, Manual in Danish, Without heated washer nozzles, Without Adaptive Chassis Control, Chrome elements on power mirror and window regulator switches- on front vents on driver and fr. passenger side, Operating permit- alteration, Without roof insert (standard roof), Rear shock absorption, Shock absorption in front, Without differential lock, Without ECO function, Dual-clutch transmission DSG DQ200, Electronic immobilizer, Decorative inserts "Deep Iron Gray" for dashboard and front door trim panels, Without protective film for scuff plate, Park Assist with Park Distance Control, Proactive passenger protection system in combination with Front Assist, 2 USB-C ports in the front- 2 USB-C charging sockets on the center console in rear- charging capacity up to 45 W, South Africa manufacturing sequence, Without adhesive film, Power windows, Pedestrian and cyclist monitoring, Standard pedal cluster, Automatic headlight control with exit and entry lighting, Fresh air intake system with combination filter, No special purpose vehicle- standard equipment, Alternator 140 A, Weight range 8 installation control only- no requirement forecast, Suspension range 06 installation control only- no requirement forecast, 3-cylinder SI engine 1.0 l, Map pockets on the back of each front seat, Luggage compartment cover, Adaptive Cruise Control ACC stop & go incl. speed limiter, Luggage compartment lighting, 7-speed automatic transmission or dual-clutch transmission DSG- note: PR family EDF, Hand brake lever handle in leather, Rear window wiper with intermittent control, Standard rear axle, Ceramic headliner, Unsplit rear bench seat- asymmetric split folding backrest, Air Care Climatronic 2 zone automatic climate control with enhanced air filter with activated carbon, IQ.LIGHT - LED matrix headlamps with LED separate daytime running light, Light unit in front footwell, Instrument cluster with electronic speedometer- odometer and trip odometer- tachometer, Foamed dashboard, Auto-dimming interior rearview mirror, Without decals and emblems, Hatchback, Multifunction camera, Standard climatic zones, Without dynamic road sign display, 3 head restraints in rear, Safety-optimized front head restraints, Initial standard fuel filling, Fuel system for fuel-injected SI engine, Without special body measures, Without camera systems/accident sensors, Refrigerant R1234yf, License plate carrier in front and rear (ECE), Transport protection film (minimum protection) with additional transport protection measures, Luggage compartment floor, Ambient lighting, Left-hand drive, LED interior lights with switch-off delay and dimmer- 2 LED reading lights in front and 2 in rear, Power steering, Non-folding front passenger seat backrest, Advanced high-beam control Dynamic Light Assist for LED matrix headlamps, Lumbar supports in front, Leather multi-function steering wheel with shifting paddles, Driving on the right, 6 speakers, Height and longitudinally adjustable steering column, Dynamic headlight range control, Front center armrest- longitudinally adjustable- with storage compartment, Multi-color Digital Cockpit- selection of different info profiles possible, Driver alert system, Not hot country, 3-cylinder SI engine 1.0 l TSI- 70 kW, "Standard Plus" version, Preparation for subsequent activation: Navigation feature "Discover Media" incl. Streaming & Internet, Rear fog lamp for driving on the right, Front fog lamps and cornering light, Online service- with OCU- with head unit coding- without engine immobilizer interconnection, Vehicles with special upgrade measures, Rear floor panel module- type 1, Trims for alloy wheels, 4 alloy wheels "Ronda" 5.5j x 15- painted in Adamantium Silver, Radio, Non-smoker's package: Storage compartment and 12 V outlet in front, Regional code " ECE " for radio, Tire Pressure Monitoring System, Tires 185/65 R15 low rolling resistance, Tires without specification of tire brand, Tire Mobility Set: 12-volt compressor and tire sealant, Wheelbase, 3-point seat belts in front with height adjustment and seat belt pretensioners, Emergency call service, no registration required- service is activated upon delivery, Curtain airbags in front and rear- side airbags in front- center airbag, Gearshift knob in leather, LED rear combination lamps with dynamic turn signal, Service indicator 30 000 km or 2 years (variable), Warning signal and warning light for front and rear seat belts not fastened, 3-point seat belts with seat belt pretensioners for the outer rear seats, 3-point seat belt for center rear seat, Inserts of front seats and outer rear seats in fabric "Style", Front seats with height adjustment, Heated front seats, Start-stop system with regenerative braking, Single-tone horn, Illuminated vanity mirrors in sun visors, Without voice control, Lane change system Side Assist and Rear Traffic Alert, Semi-automated driving assistance Travel Assist and lane keeping system Lane Assist, Privacy glass for rear side windows and rear window, Body-colored bumpers- radiator grille and air intake with chrome trim, Front stabilizer bar, Storage compartment for Manual under left front seat, Without headlamp washer system, Rain sensor, Elimination of nameplate for engine designation on luggage compartment lid, Central locking system without SAFELock- with radio remote control and 2 remote control folding keys, Type approval country Denmark, Carrier frequency 433.92 MHz-434.42 Mhz, Door and side trim panel, 4 doors, Digital radio reception DAB+, Without additional front underbody guard, Special identification label for EC for M1 passenger vehicles, Delivery equipment- water border, Rear overhang-short, Warning triangle, Sports comfort seats in front, Mobile phone interface, LongLife Service Regime, Without heat accumulator/auxiliary heater, Laminated safety glass windshield- heat-insulating, Warning lamp for washer fluid level, Without second battery, Without additional tires, Carpet mats in front and rear, ISOFIX anchors for child seats on outer rear bench seats and on front passenger seat- compatible for i-Size, Without auxiliary heater/parking heater, Equipment options subset for Denmark

PICTURES



Picture viewer: <https://fm.bilsalg.dk/business/picturebrowser?t=full&guid=4af16de8-513f-40ec-b41b-5d4e63597186&carid=21615156>

OVERVIEW OF DAMAGES AND SHORTAGES

N°	LOCATION	TYPE	SEVERITY	INSURANCE	NOTES	DAMAGE GROUP
1	R. Rear Quarter Panel	Scratch	C4		Reporting needed	



Severity explanation:

C0 = No damage / C1 = Simple preparation / C2 = Minor preparation needed / C3 = Can be smart repaired / C4 = Repair/spray paint / C5 = Need replacement

ELECTRICAL AND MECHANICAL CONDITION

N°	LOCATION	TYPE	NOTES
1	Is the car drivable	Yes	