

**VEHICLE DESCRIPTION - Škoda Scala 1.0 TSI**



<b>First registration date:</b> 12/2023	<b>VIN:</b> TMBER7NW0P3214013
<b>Colour:</b> Gray Metallic Normal gloss	<b>Mileage (km):</b> 57.498
<b>Gear:</b> Automatic (7 Gears)	<b>Fuel type:</b> Gasoline
<b>Body type:</b> Hatchback	<b>Number of doors:</b> 5
<b>Drive type:</b> FWD	<b>Model year:</b> 2018-2024
<b>Engine power:</b> 81 kW	<b>Number of seats:</b> 5
<b>Engine size (cc):</b> 999	<b>Interior:</b>

**VEHICLE DETAILS**

<b>Number of keys:</b> 2	<b>Number of license plates:</b> 2	<b>Registration certificate:</b> Part 1 & 2 present	<b>Service documentation:</b> Yes
<b>Inspection date:</b> 25-06-2026	<b>Last service (year/month):</b> 2026/3	<b>Mileage (km) at last service:</b> 52.447	

**SUMMARY OF THE VEHICLE'S CONDITION**

<b>Is the car in a driveable condition:</b> Yes	<b>Legal tire tread (minimum 1.6 mm):</b> Yes
--	--

## WHEELS

TYPE	SEASON	BRAND	POSITION	RIM	SIZE	TREAD
Fitted	Summer tires		Front Left	Alloy rim	16"	4 mm
Fitted	Summer tires		Rear Right	Alloy rim	16"	4 mm
Fitted	Summer tires		Rear Left	Alloy rim	16"	4 mm
Fitted	Summer tires		Front Right	Alloy rim	16"	4 mm

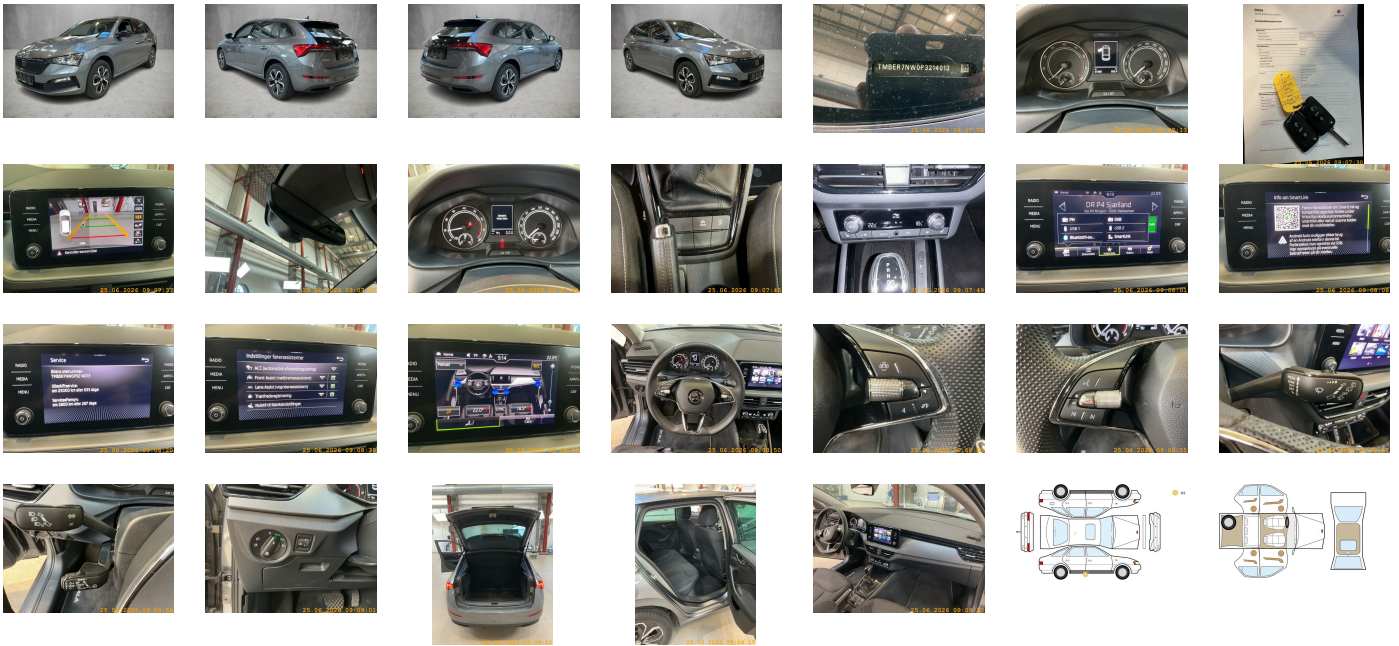
### Legal tire tread (minimum 1.6 mm):

Yes

## ACCESSORIES





"ADAPTIVE CRUISE CONTROL" to 210km/hour, rear view camera system, Center armrest in front "Jumbo Box" + 2 USBs rear (charging only), Front fog lights with "CORNER" functionality, Dynamic package, Care connect 1 year, No special edition, Standard wheel bolts, Without adapter, Vehicle class differentiation -655-, Hill hold control, Emission standard EU6 AP, Trailer hitch preparation, Driver knee airbag, Activated carbon canister (Evaporative Emission Control System (EVAP)), Spectacle storage compartment/bracket, Antenna for FM reception only- diversity, Exterior mirrors- power-adjustable/heated, Left exterior mirror- convex, Right exterior mirror- convex, Without alternative drive system, Front-wheel drive, MirrorLink, Ambition, "FRONT ASSIST" incl. adaptive cruise control, Disc brakes in rear (Geomet D), Battery 380 A (59 Ah) EFB+, Disc brakes in front (Geomet D), Outside door mirrors in black color, Part set without country-specific prescriptive standard, With trim panel, Tool kit, Electronic stability control (ESC), Manual in Danish, Heated washer nozzles in front, Drive Mode Select without Chassis Presets, Black Piano, Operating permit- alteration, Without roof rails/roof load rack, Without roof insert (standard roof), Rear shock absorption- basic version 1, Without decorative films/emblems, Shock absorption in front, ECO function, Installation differentiation for transmission DQ200 -- vehicle components --, Electronic immobilizer, Decorative inserts Grained Black, Without protective film for scuff plate, Rear parking sensors, Without extended safety system, 2 USB Typ-C vorne und 2 USB Typ-C rear, Standard manufacturing sequence, Power windows with comfort operation and circuit breaker, Without fire extinguisher, Without additional malfunction display, Extended and proactive pedestrian and cyclist protection, Standard pedal cluster, Interiorbars and air vents frame Black glossy, Separate daytime running light with automatic headlight control and manual Coming and Leaving Home feature, Fresh air intake system with combination filter, Antifreeze up to -25 degree Celsius tolerance up to -30 degree C, No special purpose vehicle- standard equipment, Without additional noise suppression measures for passenger compartment, Alternator 140 A, Weight range 13 installation control only- no requirement forecast, Suspension range 06 installation control only- no requirement forecast, 3-cylinder SI engine 1.0 I unit 05C.A, Luggage compartment cover, Luggage net, Adaptive cruise control (for DSG) with Speedlimiter, Additional exterior noise suppression, 7-speed automatic transmission, Glove compartment door with light, Without bracket, Long rear window with spoiler, Rear window wiper and washer system with intermittent control, Standard rear axle, Rear axle weight- type 1, Grey ceiling, Unsplit rear seat bench- split folding backrest, Climatronic with impact pressure control- CFC-free, Basic LED Headlights, Instrument cluster- km/h speedometer, Breakaway interior rearview mirror- auto-dimming, Spaceback, With multifunction camera, Without two-sided floor surface, Without refrigerator/glove compartment cooling system, Mounting fixture in luggage compartment, Without folding table on front seat backrest, Standard climatic zones, Without dynamic road sign display, Three rear head restraints, Hight-adjustable head restraints for front seats, Initial standard fuel filling, Fuel system for fuel-injected SI engine (tropicalized), With rear view camera system (type 2), Radiator grille - black, Refrigerant R1234yf, Transport protection film with additional transport protection measures, Standard paint coating, Without luggage/load compartment floor, Without add. lights (interior lighting), Left-hand drive, Power steering, Without backrest release for front seats, Curb weight range 1, Without light control, Manually adjustable lumbar support in front seats, Leather-wrapped multi-function steering wheel, Driving on the right, 8 speakers (passive), Axial and vertical adjustable steering column, Headlight range control, Center armrest in front "Jumbo Box", Basic equipment variant, Boardcomputer Maxidot, Center console, Driver alert system, Not hot country, 3-cylinder SI engine 1.0 I/81 kW TSI base engine is TJ4/TC5, "Standard Plus" version, Without navigation device, Front fog lamp and cornering lamp, Remote Access / Pro-active service, Rear floor panel module- type 3, Trims for alloy wheels, Alloy wheels 6J x 16" ET38 "Hoedus Aero", Radio Bolero 8", Non-smoker's package, Regional code " ECE " for radio, Tire pressure monitoring system, With umbrella, Tires 205/55 R16 91V super-low rolling resistance, Tires without specification of tire brand, Breakdown kit, Wheelbase, 3-point seat belts in front- with tensioner and height adjustment, Emergency call system eCall+, Side airbag in front with curtain airbag, Gearshift knob/handle in leather, LED rear combination lamp- dynamic turn signal- special styling, Tailgate without electrical opening, Service indicator 30 000 km or 2 years ( variable ), Visual and acoustic seat belt reminder- electric contact, 3-point seat belts- outer rear with ECE label, 3-point seat belt for center rear seat, Seat Ambition, Manual height adjustment for front seats, Seat heater for front seats separately controlled, Key for locking system with remote control, Start-stop system with regenerative braking, Single-tone horn, Sun visors with mirror and airbag label on front passenger side, Without voice control, Without lane change assist, Spurhalte assist, Sunset, Without protective side molding, Without socket, Body-colored bumpers, Front stabilizer bar, Without drawers under front seats, Without headlamp washer system, Windshield wiper intermittent control with light sensor, Nameplate set in basic style, Without waste bin, Central locking system Keyless Go without SAFELock, Type approval country Denmark, Carrier frequency 433.92 MHz-434.42 Mhz, Without partition, Door panels with upholstery, 4 doors, DAB - Digital radio reception, Additional front underbody guard, Special identification label for EC for M1 passenger vehicles, Without delivery equipment, Rear overhang- medium, Standard Seats, Bluetooth with Wireless Charging (LTE), LongLife Service Regime, Without heat accumulator/auxiliary heater, Heat-reflecting windshield, Without washer fluid level indicator, Without second battery, Without floor mats, Standard decorative trims, Without additional side body covers (stone guard), Child seat anchors f. child seat system i-Size- 2x top tether and child seat anchors in front on front passenger side, Without electronic steering column lock, Without auxiliary heater/parking heater, Equipment options subset for Denmark

**PICTURES**



**Picture viewer:** <https://fm.bilsalg.dk/business/picturebrowser?t=full&guid=81fe7b3d-3424-4fc6-9fdf-0af4b9cc6cce&carid=21609028>

**OVERVIEW OF DAMAGES AND SHORTAGES**

N°	LOCATION	TYPE	SEVERITY	INSURANCE	NOTES	DAMAGE GROUP
1	R. Rocker Panel, Inside	Scratch	C3			
						

Severity explanation:

C0 = No damage / C1 = Simple preparation / C2 = Minor preparation needed / C3 = Can be smart repaired / C4 = Repair/spray paint / C5 = Need replacement

**ELECTRICAL AND MECHANICAL CONDITION**

N°	LOCATION	TYPE	NOTES
1	Is the car drivable	Yes	