

VEHICLE DESCRIPTION - VW T-Cross Style Plus 1.5 TSI



| | |
|----------------------------------------------|---------------------------------|
| First registration date: 11/2023 | VIN: WVGZZC19PY171651 |
| Colour: Blue Metallic Normal gloss | Mileage (km): 26.859 |
| Gear: Automatic (7 Gears) | Fuel type: Gasoline |
| Body type: SUV | Number of doors: 5 |
| Drive type: FWD | Model year: 2018-2024 |
| Engine power: 110 kW | Number of seats: 5 |
| Engine size (cc): 1498 | Interior: |

VEHICLE DETAILS

| | | | |
|---------------------------------------|---------------------------------------|----------------------------------------------------|-------------------------------------|
| Number of keys: 2 | Number of license plates: 2 | Registration certificate: Part 1 present | Service documentation: No |
| Inspection date: 04-05-2026 | Last service (year/month): | Mileage (km) at last service: | |

SUMMARY OF THE VEHICLE'S CONDITION

| | |
|----------------------------------------------------|--------------------------------------------------|
| Is the car in a driveable condition: Yes | Legal tire tread (minimum 1.6 mm): Yes |
|----------------------------------------------------|--------------------------------------------------|

WHEELS

|  TYPE | SEASON | BRAND | POSITION | RIM | SIZE | TREAD |
|---------------------------------------------------------------------------------------|--------------|-------|-------------|-----------|------|-------|
| Fitted | Summer tires | | Front Left | Alloy rim | 18" | 5 mm |
| Fitted | Summer tires | | Front Right | Alloy rim | 18" | 5 mm |
| Fitted | Summer tires | | Rear Left | Alloy rim | 18" | 5 mm |
| Fitted | Summer tires | | Rear Right | Alloy rim | 18" | 5 mm |
| Extra Wheel | Winter tires | | Front Left | Steel rim | 16" | 6 mm |
| Extra Wheel | Winter tires | | Front Right | Steel rim | 16" | 6 mm |
| Extra Wheel | Winter tires | | Rear Left | Steel rim | 16" | 6 mm |
| Extra Wheel | Winter tires | | Rear Right | Steel rim | 16" | 6 mm |

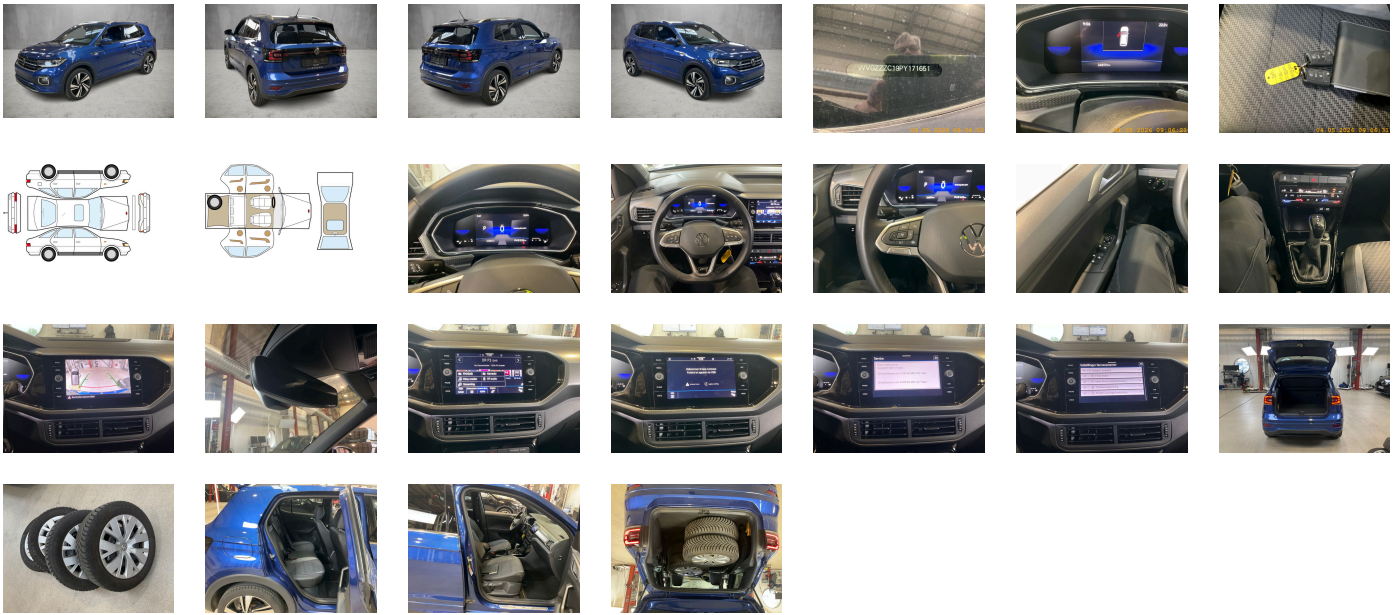
Legal tire tread (minimum 1.6 mm):

Yes

ACCESSORIES

Driving on the right, "Standard Plus" version, Category 0, Executive equipment, Part set without country-specific prescriptive standard, Type approval country Denmark, Operating permit- alteration, 4-cylinder SI engine 1.5 l TSI- 110 kW, Without ECO function, Online service- with OCU- with head unit coding- without engine immobilizer interconnection, Driver alert system, Regional code " ECE " for radio, No special edition, No special purpose vehicle- standard equipment, Vehicles without special upgrade measures, Shock absorption in front, 7-speed automatic transmission or dual-clutch transmission DSG- note: PR family EDF, Tires 215/45 R18, Battery 380 A (59 Ah) EFB+, Rear view camera system, Refrigerant R1234yf, Hatchback, Left-hand drive, Suspension range 27 installation control only- no requirement forecast, Standard battery/alternator capacity, Emergency call service, no registration required- service is activated upon delivery, 4-cylinder SI engine 1.5 l unit 05E.D, Inserts of front seats and outer rear seats in fabric "R-Line", Proactive passenger protection system, Adaptive Cruise Control ACC up to 210 km/h and Autonomous Emergency Braking Front Assist, Nevada 7j x 18- Volkswagen R- tires 215/45 R18, Lights & Vision package, LongLife Service Regime, Without voice control, Service indicator 30 000 km or 2 years (variable), Chrome package, Multifunction camera, Drawer under right front seat, Ambient lighting, Without dynamic road sign display, Digital radio reception DAB+, Sports comfort seats in front, Radio "Ready 2 Discover" incl. "Streaming & Internet", Control of campaigns, Hill start assist, Instrument cluster with electronic speedometer- odometer and trip odometer- tachometer, 2 USB-C ports in the front- 2 USB-C charging sockets on the center console in rear- charging capacity up to 45 W, Pedals in brushed stainless steel, Pedestrian and cyclist monitoring, Tires without specification of tire brand, 4 alloy wheels "Nevada" 7j x 18- Black- diamond-turned surface, R-Line- Volkswagen R, Winter package, Denmark: Comfort package forces 9WX-7P4-9ZV-4KF-6YD, Denmark: DK Package TL forces PLA-WW1-PH3 CL/HL forces PLA-KA1-PH3, Preparation for We Connect and We Connect Plus, Front stabilizer bar, 4 doors, Wheelbase, Dual-clutch transmission DSG DQ200, Pamplona manufacturing sequence, Without decals and emblems, Without alternative drive system, Elimination of nameplate for engine designation on luggage compartment lid, Standard rear axle, Rear exhaust tailpipe (standard), Carpet mats in front and rear, Manual in Danish, Weight range 14 installation control only- no requirement forecast, Standard climatic zones, Rear overhang- short, Electronic Stability Control w/ driver steering recommendation- ABS- ASR- EDL- EDTC and trailer stabilization, Fuel system for fuel-injected SI engine (tropicalized), Without trailer hitch, Special identification label for EC for M1 passenger vehicles, Activated carbon canister (Evaporative Emission Control System (EVAP)), Tire Mobility Set: 12-volt compressor and tire sealant, Rear shock absorption- heavy-duty version, Disc brakes in rear, Trims for alloy wheels, Power steering, Wheel locks with extended theft protection, Without additional front underbody guard, Without tool kit and jack, Warning triangle, Front-wheel drive, Disc brakes in front, Initial standard fuel filling, Without delivery equipment, Vehicle class differentiation -2GC-, Height and longitudinally adjustable steering column, Leather-wrapped multi-function steering wheel with shifting paddles, Without Adaptive Chassis Control, Bumpers in "R" style, Fresh air intake system with combinationfilter, Without additional tires, ISOFIX anchors for child seats on outer rear bench seats and on front passenger seat- compatible for i-Size, 3-point seat belt for center rear seat, Without roof insert (standard roof), Luggage compartment floor adjustable in 2 heights, Completely folding front passenger seat backrest, Front seats with height adjustment, Unsplit rear bench seat- sliding- asymmetric split folding backrest, 3 head restraints in rear, Silver-anodized roof rails, Luggage compartment cover, 3-point seat belts with seat belt pretensioners for the outer rear seats, License plate carrier in front and rear (ECE), Door and side trim panel, Heated front seats, Emission standard EU6 AP, Laminated safety glass windshield- heat-insulating, Central locking system without SAFELock- with radio remote control and 2 remote control folding keys, Privacy glass for rear side windows and rear window, Auto-dimming interior rearview mirror, Rear floor panel module- type 1, 3-point seat belts in front with height adjustment and seat belt pretensioners, Power windows, Driver and front passenger airbag with front passenger airbag deactivation, Map pockets on the back of each front seat, Curtain airbag system for front and rear passengers incl. side airbags in front, Chrome trim on the side window bottoms, Glove compartment door with light, Carrier frequency 433.92 MHz- 434.42 Mhz, Transport protection film (minimum protection) with additional transport protection measures, Decorative inserts "Race" for dashboard, Right exterior mirror- convex, Aspherical exterior mirror on driver side, Vanity mirrors in sun visors, Safety-optimized front head restraints, Without adhesive film, Front center armrest- longitudinally adjustable- with storage compartment- 2 USB charging sockets in rear, Body-colored exterior mirror housings and door handles, Lane keeping system Lane Assist, Autonomous Emergency Braking Front Assist (for Adaptive Cruise Control ACC up to 210 km/h), Black headliner, Hand brake lever handle in leather, Gearshift knob in leather, Lamps in front footwell, Without additional seals outside, Exterior mirrors- power-adjustable- folding and heated- w/ front passenger exterior mirror lowering function, Electronic immobilizer, Without heat accumulator/auxiliary heater, Multi-color Digital Cockpit- selection of different info profiles possible, Tire Pressure Monitoring System, Start-stop system with regenerative braking, Front scuff plates with "R-Line" logo, Lumbar supports in front, Preparation for subsequent activation: Navigation feature "Discover Media" incl. Streaming & Internet, Proactive passenger protection system in combination with Front Assist, Park Distance Control - warning signals for obstacles in the front and rear, Without lane change assist, Radio, Without second battery, Alternator 140 A, Without light control, LED headlamps for low beam and high beam, Dynamic headlight range control, Aut. headlight control with separate daytime running light-entry lighting and manual exit lighting, Rear window wiper with intermittent control, Rain sensor, 6 speakers, LED interior lights with switch-off delay and dimmer- 2 LED reading lights in front and rear, Rear fog light on one side- back-up light on both sides, Adaptive Cruise Control ACC stop & go incl. speed limiter, LED rear combination lamps (except turn signals a. back-up lamps)- with side marker lamp, Front fog lamps and cornering light, Warning lamp for washer fluid level, Without headlamp washer system, Single-tone horn, Diversity antenna for FM reception, Not hot country, Air Care Climatronic 2 zone automatic climate control with enhanced air filterwith activated carbon, Luggage compartment lighting, Non-smoker's package: 12-V outlet in front, Warning signal and warning light for front and rear seat belts not fastened, Automatically-heated washer nozzles in front, App-Connect incl. App-Connect Wireless for Apple CarPlay and Android Auto, Mobile phone interface with inductive charging feature, Equipment options subset for Denmark

PICTURES



Picture viewer: <https://fm.bilsalg.dk/business/picturebrowser?t=full&guid=c2f73950-07df-4c8a-a513-acccd74f7a28&carid=21508192>

OVERVIEW OF DAMAGES AND SHORTAGES

No damages or shortages

ELECTRICAL AND MECHANICAL CONDITION

| N° | LOCATION | TYPE | NOTES |
|----|---------------------|------|-------|
| 1 | Is the car drivable | Yes | |