

VEHICLE DESCRIPTION - Audi A3 Prestige 1.5 35 TFSI MHEV



First registration date:
11/2023

VIN:
WAUZZZGY7RA058950

Colour:
Gray Metallic Normal gloss

Mileage (km):
54.202

Gear:
Automatic (7 Gears)

Fuel type:
Hybrid petrol

Body type:
Hatchback

Number of doors:
5

Drive type:
FWD

Model year:
2020-2024

Engine power:
110 kW

Number of seats:
5

Engine size (cc):
1498

Interior:
Grey Fabric

VEHICLE DETAILS

Number of keys:
2

Number of license plates:
2

Registration certificate:
Part 1 present

Service documentation:
No

Inspection date:
27-06-2026

Last service (year/month):

Mileage (km) at last service:

SUMMARY OF THE VEHICLE'S CONDITION

Is the car in a driveable condition:
Yes

Legal tire tread (minimum 1.6 mm):
Yes

WHEELS

TYPE	SEASON	BRAND	POSITION	RIM	SIZE	TREAD
Fitted	Summer tires		Front Left	Alloy rim	17"	6 mm
Fitted	Summer tires		Rear Right	Alloy rim	17"	6 mm
Fitted	Summer tires		Rear Left	Alloy rim	17"	6 mm
Fitted	Summer tires		Front Right	Alloy rim	17"	6 mm

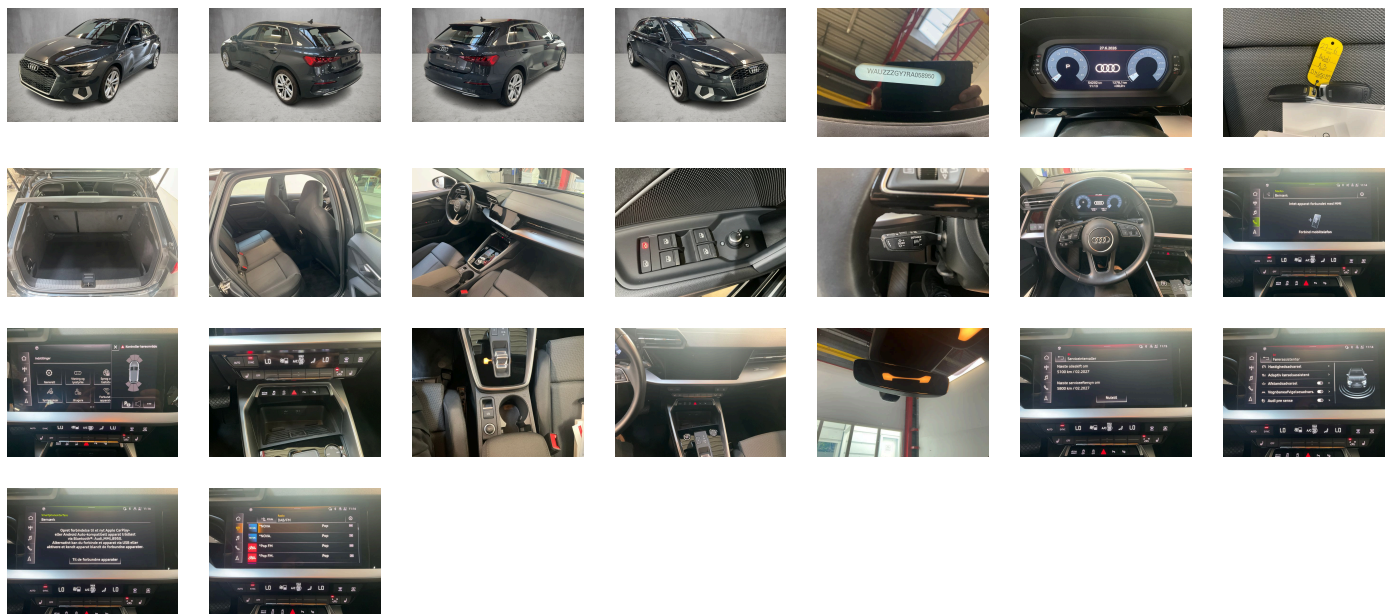
Legal tire tread (minimum 1.6 mm):

Yes

ACCESSORIES

LED headlights and LED rear lights with dynamic turn signal in rear, Equipment package for Denmark, Internal control code, Internal control code, Internal control code, Swerve assist and turn assist, No special edition, "Basic", Standard wheel bolts, Vehicle class differentiation -8Y0/8YF-, Standard exhaust system, Emission standard EU6 AP, Preparation for trailer hitch, Airbags- front, front passenger airbag can be deactivated, Activated carbon canister (Evaporative Emission Control System (EVAP)), Without Storage package, Exterior mirrors- electrically adjustable and heated, Without acoustic vehicle alerting system, Exterior mirrors: aspherical on driver side- convex on front passenger side, Mild hybrid, Front-wheel drive, advanced, Audi pre sense front, Disc brakes in rear- 15-inch (ECE), Battery 420 A (70 Ah), Disc brakes in front- 15-inch (ECE), Exterior mirror housings in body color, Standard battery/alternator capacity, Part set without country-specific prescriptive standard, Tool kit, Brake control system for vehicles with electric drive (ESC and electromechanical brake booster), Manual in Danish, Audi drive select, Interior trims in aluminum look, Operating permit- alteration, Audi connect navigation & infotainment on demand, Smartphone interface, Data module- Europe, Audi connect emergency call & service with Audi connect remote & control, Omission of roof rails, Without roof insert (standard roof), Standard suspension, Without decorative films/emblems, Shock absorption in front, SWIN management, ECO function, Installation differentiation for transmission DQ200 -- vehicle components --, Electronic immobilizer, Inlays- silk effect paint finish- Platinum Gray, Door sill trims with aluminum inlays- front, Park assist with parking system plus, Without extended safety system, Without fire extinguisher, Standard pedal cluster, Separate daytime running light, Preparation for functions on demand, Electromechanical parking brake, Without front spoiler, No special purpose vehicle- standard equipment, Belt-driven integrated starter alternator 48 V 110 - 250 A, Weight range 4 installation control only- no requirement forecast, Suspension range 07 installation control only- no requirement forecast, 4-cylinder SI engine 1.5 l unit 05E.A, Adaptive cruise control, Without garage door opener, 7-speed automatic transmission, Speed limiter, Audi AG, Roof edge spoiler, Rear window wiper and washer system with intermittent control, 4-link rear axle, Headliner in fabric- specific color, Rear seat backrest- folding, 2-zone deluxe automatic air conditioning, LED headlights, Without head-up display, Without electric motor (hybrid), Instrument cluster- km/h speedometer, Interior mirror- automatically dimming- frameless, Without additional measures for interior drive sound, Sportsback, With multifunction camera, Child-proof lock- manual, Standard climatic zones, Without camera-based traffic sign recognition, Three rear head restraints, Without antenna amplifier, Front head restraints, Initial standard fuel filling, Fuel system for fuel-injected SI engine, Without special body measures, Without camera systems/accident sensors, Refrigerant R1234yf, Rear license plate carrier (ECE), Adhesive film, Interior lighting, Without control unit for charging system, Without charging dock, Without vehicle inlet, Left-hand drive, Electromechanical power steering, Without backrest release for front seats, Without light control, Without speed limiter, Without mains cable for domestic connector for the e-tron charging system, Without mains cable for industrial connector for the e-tron charging system, Without charging cable for public charging (AC)- mode 3, Without lumbar support in seat backrests, Leather steering wheel- 3-spoke with multifunction plus and shift paddles, Driving on the right, 6 speakers (passive), Not leather-covered, Engine cover, Center armrest- front, Basic equipment variant, Digital instrument cluster, Driver alert system, Not hot country, SI engine, 4-cylinder SI engine 1.5 l/110 kW mild hybrid- TSI base engine is TJ7, Without navigation system, N.N.N. Type 1, Vehicles without special upgrade measures, Rear floor panel module- type 5, Production wheels, Standard-production quality, Wheels- 5-parallel-spoke- 8.0J x 17- 225/45 R17 tires, MMI radio plus, Non-smoker version, Regional code " ECE " for radio, Tire pressure loss indicator, Tires 225/45 R17 91Y, Tires without specification of tire brand, Tire repair kit, Wheelbase, Statutory emergency call, Side airbags- front with head airbag system and interaction airbag- front, Gearshift/selector lever handle, No self-collection, Labels in English and German, LED rear lights with dynamic turn signal, Rear window- rear door and side windows in clear glass, Manual luggage compartment lid, Service indicator 30 000 km or 2 years (variable), Without locking and starting systems, Seat belt reminder with seat occupancy sensor- rear, Routine cloth, Front seats- manually adjustable, Seat heating- front, With special labels safety certificates for Denmark, Start-stop system, Two-tone horn, Control (in-plant), Without lane change assist, Lane departure warning, 12V socket in the rear, Bumpers- advanced, Rear stabilizer bar, Front stabilizer bar, Control of series production, Without headlamp washer system- with washer fluid level indicator, Light/rain sensor, Remote control key without Safelock, Type approval country Denmark, UWB-capable country and carrier frequency- 433.92 to 434.42 MHz, Transit coating (type 1), Digital Audio Broadcasting, Without additional front underbody guard, Special identification label (EU), Model designation and technology nameplate, First-aid kit with warning triangle, Without preconditioning, Sport seats- front, Audi phone box light, Without logo projection, LongLife Service Regime, Without heat accumulator/auxiliary heater, Windshield with heat-insulating glass, Without second battery, Without additional tires, Floor mats- front and rear, Gloss package, Standard side sills, i-Size and top tether for the outer rear seats, Without auxiliary heater/parking heater, Equipment options subset for Denmark

PICTURES



Picture viewer: <https://fm.bilsalg.dk/business/picturebrowser?t=full&guid=1874ab52-7ff5-472b-8f2d-703c7ba27fc1&carid=21501518>

OVERVIEW OF DAMAGES AND SHORTAGES

No damages or shortages

ELECTRICAL AND MECHANICAL CONDITION

N°	LOCATION	TYPE	NOTES
1	Is the car drivable	Yes	