

VEHICLE DESCRIPTION - Audi Q5 Prestige 2.0 50 TFSI e PHEV



First registration date
11/2023

VIN:
WAUZZZFYP2144520

Colour:
null Metallic Normal gloss

Mileage (km):
46.220

Gear:
Automatic (7 Gears)

Fuel type:
Hybrid petrol

Body type:
SUV

Number of doors:
5

Drive type:
4WD

Model year:
2020-2025

Engine power:
220 kW

Number of seats:
5

Engine size (cc)
1984

Interior:
Black Fabric

VEHICLE DETAILS

Number of keys:
2

Number of license plates:
2

Registration certificate:
Part 1 present

Service documentation:
Yes

Inspection date:
23-06-2026

Last service (year/month):
2023/10

Mileage (km) at last service:
17

SUMMARY OF THE VEHICLE'S CONDITION

Is the car in a driveable condition:
Yes

Legal tire tread (minimum 1.6 mm):
Yes

WHEELS

TYPE	SEASON	BRAND	POSITION	RIM	SIZE	TREAD
Fitted	Summer tires		Rear Left	Alloy rim	20"	4 mm
Fitted	Summer tires		Front Right	Alloy rim	20"	3 mm
Fitted	Summer tires		Front Left	Alloy rim	20"	3 mm
Fitted	Summer tires		Rear Right	Alloy rim	20"	4 mm

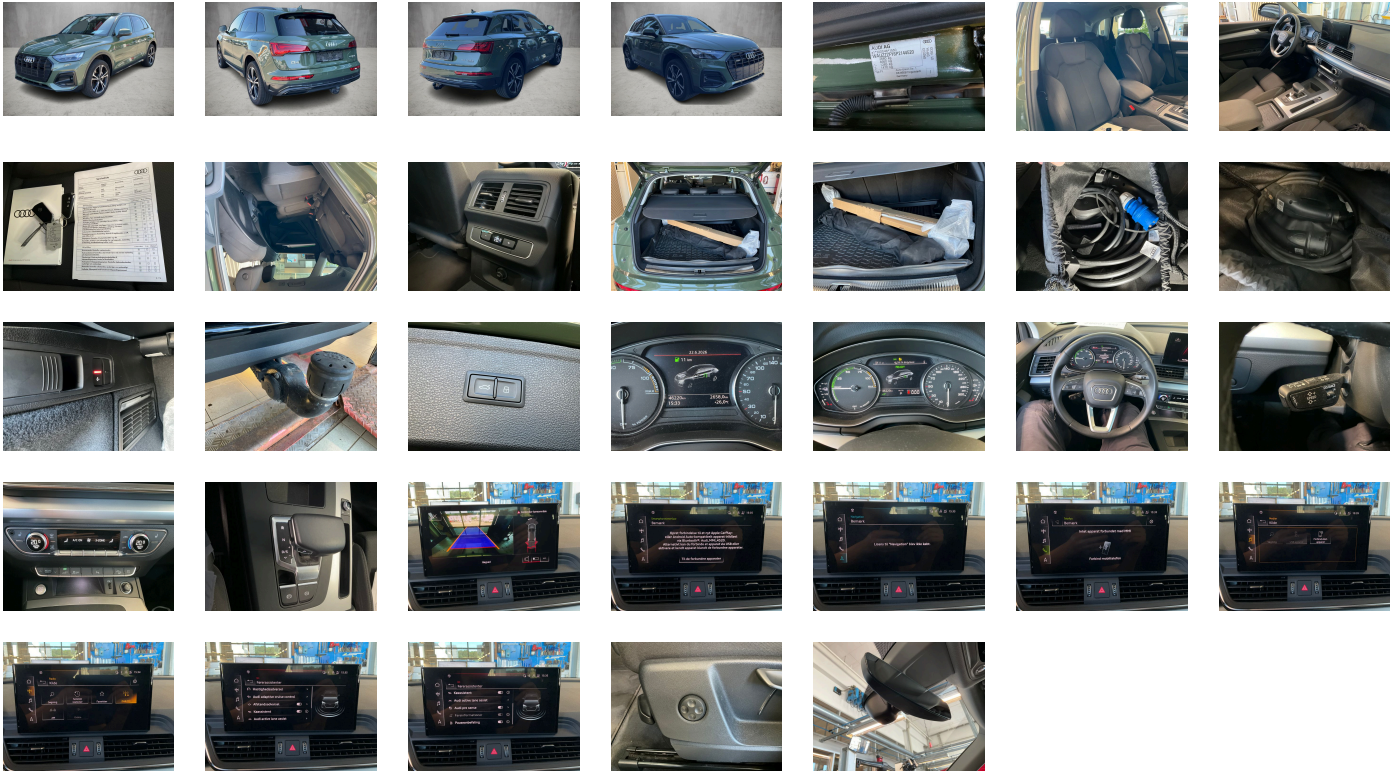
Legal tire tread (minimum 1.6 mm):

Yes

ACCESSORIES




Without additional warning lights, Acoustic vehicle alerting system, Manual child safety lock, Fuel tank, Basic, Model name as per new output designation, Without fire extinguisher, Sun visors- front, Audi pre sense city, Without garage door opener, Black roof rails with roof rack detection system, e-tron charging system compact (AC) with domestic connector type K (Denmark), Ambient Lighting package plus, Headlining in cloth in specific color, Headlight cleaning system, Beverage holders, Black Styling package, Insert for the filling up of unleaded fuel, Equipment package for Denmark, Without additional front underbody guard, First-aid kit with warning triangle and high-visibility vests, Rear trim panel (ECE), Axial and vertical adjustable steering column, Weight category front axle weight range 7, Interior mirror-automatically dimming- frameless, Part set without country-specific prescriptive standard, Carrier frequency 433.92 MHz-434.42 Mhz, Disc brakes in rear- 17-inch (ECE), Refrigerant R1234yf, Driver information system with color display, Preparation for navigation system High for function-on-demand feature, Data module-Europe, 4-way lumbar support for the front seats, Comfort center armrest- front, Auxiliary air conditioning, Without antenna amplifier, Luggage compartment lid-electrically opening and closing, Without heat accumulator/auxiliary heater, quattro, Driving on the right, Without wall mount, Luggage compartment cover, Floor mats- front and rear, Audi adaptive cruise control, Digital Audio Broadcasting, Audi phone box light, Side airbags- front and head airbag system, Exterior mirrors-electrically adjustable- heated and folding- automatically dimming on both sides, Passenger car design, Without integrated toll system, Audi drive select, Extended pedestrian protection, quattro with ultra technology, Standard suspension, Emission standard EU6 AP, Tires without specification of tire brand, Matrix LED headlights and LED rear lights and headlight cleaning system, Audi AG, 8 loudspeakers, Hybrid propulsion system PHEV, Without step, Without danger alarm system, Without special body measures, Weight range 11 installation control only- no requirement forecast, Disk brakes- front- 17-inch (ECE), Tire repair kit, Increase in initial standard fuel filling, Standard climatic zones, Without AdBlue tank, No special purpose vehicle- standard equipment, Audi connect key, Smartphone interface, Without front license plate carrier, Airbags- front, front passenger airbag can be deactivated, With connect package 6, Without roof insert (standard roof), Charging cable for public charging- mode 3- 11 kW (AC), Transit coating (type 2), Without head-up display, 3-zone deluxe automatic air conditioning, Without seat ventilation/massage seat, SI engine, Electronic immobilizer, Installation parts for four-cylinder engine, Seat belt reminder, Seat heating- front, Door sill trims with aluminum inlays- front, Matrix LED headlights with dynamic light sequencing and dynamic turn signal, Separate daytime running light, Standard-production quality, Hold assist, Internal control code, Electromechanical power steering, Assist package including Audi pre sense plus for export markets, Without additional tires, Without Storage package, Non-smoker version, Reinforced bumpers, With special labels safety certificates for Denmark, tiptronic, Parking system plus, Category 0, Without lane change assist, LED rear lights with dynamic light sequencing and dynamic turn signal, Internal control code, Wheels- 5-twin-spoke dynamic- 8.0J x 18 235/60 R18 tires, No self-collection, Operating permit- alteration, Without decorative films/emblems, Without Car2X, 4-cyl. SI engine 2.0 l/195 kW- hybrid- turbo FSI- system output 220 kW base engine is T4H, Partition net, Battery 380 A (68 Ah), ISOFIX child seat mounting and top tether for the outer rear seats, Standard electric, Labels in English and German, Rear and side windows with heat-insulating glazing, Basic equipment variant, Recuperation, Type approval country Denmark, Wheel bolts- anti-theft, Not hot country, Without roll-up sunshade, Electric motor (hybrid electric vehicle)- total system output 220 kW- unit 0ED.D, Preparation for functions on demand, Rear spoiler, Without child seat anchora in front (ISOFIX), Left exterior mirror- aspherical, Without preparation for VTS (vehicle tracking system), Without leather, Vehicles with special upgrade measures, Without alternator, Matrix LED headlights with dynamic light sequencing and dynamic turn signal, Special identification label (EU), Impressum cloth, Manual in Danish, Loading sill protector- stainless steel, Fuel system for SI engine with direct injection (FSI), Service indicator 30 000 km or 2 years (variable), Convenience key- without Safelock, No special edition, Rear seat bench plus, Tire pressure loss indicator, Industrial connector CEE 16A- 230V- long and straight- for the e-tron charging system, Sport seats- front, Adhesive film, Standard suspension, Business package for Denmark, Regional code " ECE " for radio, Tires 235/60 R18 103V super-low rolling resistance, With multifunction camera, Reversing camera, Right exterior mirror- aspherical, Charging socket AC type 2, Control of series production, Without ignition/starter switch locking system- without steering lock, Front seats- manually adjustable, Country group A, Internal control code, Standard, Accent surfaces- Matt Black, Head restraints- front, Vehicle tool kit (without vehicle jack), Audi connect emergency call & service with Audi connect remote & control, advanced, Inlays- Micrometallic- Silver, Luggage compartment mat, Left-hand drive, Loading floor, Instrument cluster- km/h speedometer, Windshield with heat-reflecting glass and acoustic glass, Production wheels, Without extended safety system, Clear glass, Two-tone horn, Exterior mirror housings in body color, Box, Gearshift/selector lever handle, Vehicle class differentiation -FY0/FYF-, N/A, Audi active lane assist, Without auxiliary heater/parking heater, Leather steering wheel- 3-spoke with multifunction plus, Standard pedal cluster, 4-cylinder SI engine 2.0 l unit 06N.E, S tronic (for all-wheel drive), Without dynamic road sign display, Standard manufacturing sequence, Equipment options subset for Denmark

PICTURES



Picture viewer: <https://fm.bilsalg.dk/business/picturebrowser?t=full&guid=4c458418-d614-4fbf-aefa-a145d4eb74aa&carid=21398024>

OVERVIEW OF DAMAGES AND SHORTAGES

N°	LOCATION	TYPE	SEVERITY	INSURANCE	NOTES	DAMAGE GROUP
1	L. Front door	Dent	C3			
						
2	R. Front Door	Dent	C3			
						
3	Rear Bumper	Scratch	C3			
						

Severity explanation:

C0 = No damage / C1 = Simple preparation / C2 = Minor preparation needed / C3 = Can be smart repaired / C4 = Repair/spray paint / C5 = Need replacement

ELECTRICAL AND MECHANICAL CONDITION

N°	LOCATION	TYPE	NOTES
1	Is the car drivable	Yes	