

VEHICLE DESCRIPTION - Audi Q3 Attitude Plus 1.4 45 TFSI e PHEV



| | |
|---|--------------------------------------|
| First registration date: 10/2023 | VIN: WAUZZZF33R1033517 |
| Colour: Dark gray Metallic Normal gloss | Mileage (km): 35.024 |
| Gear: Automatic (6 Gears) | Fuel type: Hybrid petrol |
| Body type: SUV | Number of doors: 5 |
| Drive type: FWD | Model year: 2018-2025 |
| Engine power: 180 kW | Number of seats: 5 |
| Engine size (cc): 1395 | Interior: Dark grey Fabric |


VEHICLE DETAILS

| | | | |
|---------------------------------------|---------------------------------------|--|-------------------------------------|
| Number of keys: 2 | Number of license plates: 2 | Registration certificate: Part 1 & 2 present | Service documentation: No |
| Inspection date: 05-05-2026 | Last service (year/month): | Mileage (km) at last service: | |

SUMMARY OF THE VEHICLE'S CONDITION

| | |
|--|--|
| Is the car in a driveable condition: Yes | Legal tire tread (minimum 1.6 mm): Yes |
|--|--|

WHEELS

|  TYPE | SEASON | BRAND | POSITION | RIM | SIZE | TREAD |
|---|----------------|-------|-------------|-----------|------|-------|
| Fitted | All year tires | | Front Left | Alloy rim | 17" | 5 mm |
| Fitted | All year tires | | Rear Right | Alloy rim | 17" | 6 mm |
| Fitted | All year tires | | Rear Left | Alloy rim | 17" | 6 mm |
| Fitted | All year tires | | Front Right | Alloy rim | 17" | 5 mm |

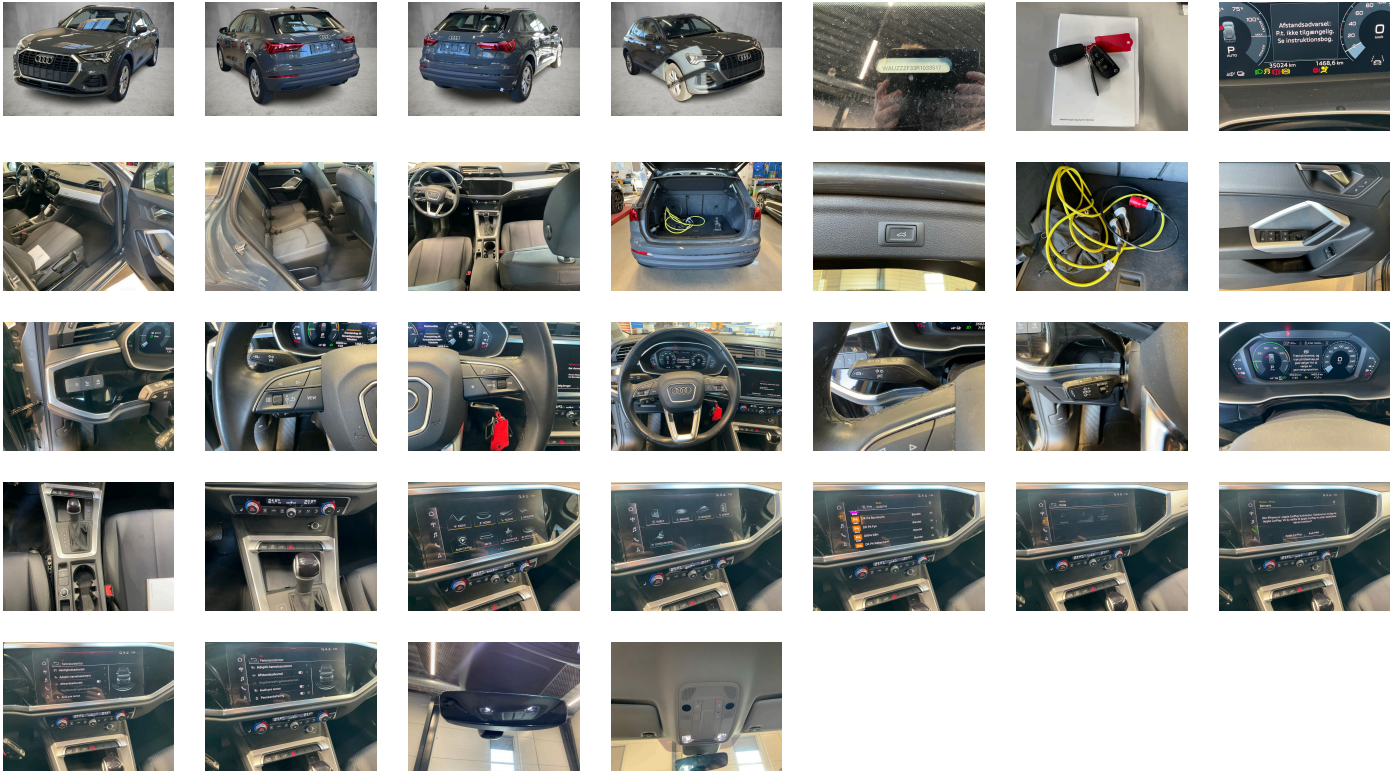
Legal tire tread (minimum 1.6 mm):

Yes

ACCESSORIES





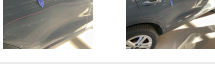

Standard-production quality, Driving on the right, No self-collection, Audi AG, Basic exterior, Part set without country-specific prescriptive standard, Type approval country Denmark, Wheels- 5-twin-spoke- 7.0J x 17- 215/65 R17 tires, Operating permit- alteration, 4-cylinder SI engine 1.4 l/110 kW TSI- hybrid base engine is TH8/T9D, ECO function, Audi connect remote & control (for MMI navigation plus), Driver alert system, Regional code " ECE " for radio, Without charging cable, No special edition, Control of series production, Basic equipment, Production wheels, N.N.N. Type 1, No special purpose vehicle- standard equipment, Without antenna amplifier, Acoustic vehicle alerting system, Without sound measures for the vehicle interior (for Audi/Seat only), Vehicles without special upgrade measures, Accent surfaces- Gloss Black, S tronic, Shock absorption in front, Audi connect navigation & infotainment, Without Connect package, SI engine, Top infotainment system High (MIB3), Battery 340 A (58 Ah), Tires 215/65 R17 99V super-low rolling resistance- generation 2, Without camera systems/accident sensors, Refrigerant R1234yf, Box, Left-hand drive, Suspension range 04 installation control only- no requirement forecast, SWIN management, Without wall mount, Engine cover, Transit coating (type 1), Without control unit for charging system, Standard battery/alternator capacity, Statutory emergency call, Reason cloth, Adaptive cruise control, Preparation for MMI navigation plus, LED headlights and LED rear lights with dynamic turn signal in rear, Without Storage package, LongLife Service Regime, Speech dialog system, Service indicator 15 000 km or 1 year (fix), Without interior trim, With multifunction camera, Rear window- rear door and side windows in clear glass, Interior lighting, Without dynamic road sign display, Digital Audio Broadcasting, Standard seats- front, 4-cylinder SI engine 1.4 l unit 04E.C, Hill hold assist, Electromechanical parking brake, Smartphone interface, Standard rear seat release, Instrument cluster- km/h speedometer, Without garage door opener, Standard pedal cluster, Extended and proactive pedestrian and cyclist protection, Tires without specification of tire brand, Equipment package for Denmark, Equipment package for Denmark, Internal control code, Internal control code, Internal control code, Front stabilizer bar, Rear stabilizer bar, Wheelbase, Standard manufacturing sequence, Installation differentiation for transmission DQ400 -- vehicle components --, Hybrid propulsion system PHEV, With special labels safety certificates for Denmark, Standard exhaust system, Without electronic steering column lock, Floor mats- front and rear, Manual in Danish, Weight range 7 installation control only- no requirement forecast, Standard climatic zones, Brake control system for vehicles with electric drive (ESC and electromechanical brake booster), Fuel system for fuel-injected SI engine, Special identification label (EU), Activated carbon canister (Evaporative Emission Control System (EVAP)), Tire repair kit, Seat occupancy sensor, Comfort suspension, Disk brakes- front- 17-inch (ECE), Preparation for trailer hitch, Trims for alloy wheels, Electromechanical power steering, Standard wheel bolts, Without additional front underbody guard, Tool kit, Vehicle class differentiation -F30/F3A-, First-aid kit with warning triangle, Without folding table on front seat backrest, Installation parts for four-cylinder engine, Leather steering wheel- 3-spoke with multifunction plus, Front-wheel drive, Increase in initial standard fuel filling, Disc brakes in rear, Audi drive select, Bumpers- standard, Labels in English and German, Loading sill protector- plastic, Without additional tires, Model name as per new output designation, Electric motor (hybrid) system output 180 kW units 0ED.B/0EK.A/0T3B, ISOFIX and top tether for outer rear seats, Without partition, Without roof insert (standard roof), Without child seat mounting- front (ISOFIX), Without backrest release for front seats, Front seats- manually adjustable, Without special measures, Roof rails in Black, Head restraints- rear (3), 3-point seat belts- outer rear with ECE label, Rear license plate carrier (ECE), Seat heating- front, Emission standard EU6 AP, Without seat ventilation/massage seat, Luggage compartment lid- electrically opening and closing, Windshield with heat-reflecting glass and acoustic glass, Manual child safety lock, Remote control key- without Safelock, Interior mirror- automatically dimming- frameless, Airbags- front, front passenger airbag can be deactivated, Side airbags- front and head airbag system, Trim strips in Black, Without special body measures, Carrier frequency 433.92 MHz-434.42 Mhz, Rear spoiler, Rear seat bench plus, Adhesive film, Without front spoiler, Inlay- Micrometallic- Silver, Exterior mirrors on the right- (large field of view)- convex, Left exterior mirror- aspherical, Head restraints- front, Without fire extinguisher, Comfort center armrest- front, Exterior mirror housings in body color, Side decorative films, Lane departure warning, Audi pre sense front for adaptive cruise control, Headlining in cloth in specific color, Exterior mirrors- electrically adjustable and heated, Speed limiter, Electronic immobilizer, Without socket, Without heat accumulator/auxiliary heater, Not leather-covered, Tire pressure loss indicator, Start-stop system with recuperation, Door sill trims with plastic inlays, 4-way lumbar support for the front seats, Preparation for MMI navigation plus, Without extended safety system, Parking system- rear, Without lane change assist, Without charging cable (industrial connector), Charging cable mode 3- type 2/3- 16 A, Installation of SLI battery in rear- without second battery, Without alternator, High beam assistant, LED headlights, Separate daytime running light, Light/rain sensor, Headlight range control, 6 loudspeakers, Adaptive cruise control, LED rear lights plus, Without front fog lamps, Washer fluid level indicator, Without headlamp washer system, Two-tone horn, Not hot country, 2-zone deluxe automatic air conditioning, Non-smoker version, Without auxiliary heater/parking heater, Audi virtual cockpit, Without logo projection, Without "Multimedia" in vehicle, Bluetooth interface, Operating voltage 12 V, Equipment options subset for Denmark

PICTURES



Picture viewer: <https://fm.bilsalg.dk/business/picturebrowser?t=full&guid=40ea55f4-a3fa-495b-a9c1-826bcf9bef79&carid=21398021>

OVERVIEW OF DAMAGES AND SHORTAGES

| N° | LOCATION | TYPE | SEVERITY | INSURANCE | NOTES | DAMAGE GROUP |
|----|--|---------|----------|-----------|------------------|--------------|
| 1 | R. Rear Quarter Panel, List  | Scratch | C5 | | Reporting needed | Group 1 |
| 2 | R. Rocker Panel | Scratch | C5 | | Reporting needed | Group 1 |
| 3 | R. Rear Door, List  | Scratch | C5 | | Reporting needed | Group 1 |
| 4 | Rear Bumper, Spoiler  | Dent | C5 | | Reporting needed | Group 1 |
| 5 | R. Rear Rim  | Scratch | C4 | | Reporting needed | Group 1 |
| 6 | R. Rear Door  | Dent | C4 | | Reporting needed | Group 1 |
| 7 | Rear Bumper  | Scratch | C4 | | Reporting needed | Group 1 |

Severity explanation:

C0 = No damage / C1 = Simple preparation / C2 = Minor preparation needed / C3 = Can be smart repaired / C4 = Repair/spray paint / C5 = Need replacement

ELECTRICAL AND MECHANICAL CONDITION

| N° | LOCATION | TYPE | NOTES |
|----|---------------------|------|-------|
| 1 | Is the car drivable | Yes | |