

VEHICLE DESCRIPTION - Škoda Kamiq Blackline 1.0 TSI



First registration date:
10/2023

VIN:
TMBGR7NW1P3191866

Colour:
Black Metallic Normal gloss

Mileage (km):
79.723

Gear:
Automatic (7 Gears)

Fuel type:
Gasoline

Body type:
SUV

Number of doors:
5

Drive type:
FWD

Model year:
2019-2024

Engine power:
81 kW

Number of seats:
5

Engine size (cc):
999

Interior:
Black Fabric

VEHICLE DETAILS

Number of keys:
2

Number of license plates:
2

Registration certificate:
Part 1 present

Service documentation:
Yes

Inspection date:
01-07-2026

Last service (year/month):
2025/12

Mileage (km) at last service:
62.669

SUMMARY OF THE VEHICLE'S CONDITION

Is the car in a driveable condition:
Yes

Legal tire tread (minimum 1.6 mm):
Yes

WHEELS

TYPE	SEASON	BRAND	POSITION	RIM	SIZE	TREAD
Fitted	Summer tires		Front Left	Alloy rim	16"	4 mm
Fitted	Summer tires		Rear Right	Alloy rim	16"	4 mm
Fitted	Summer tires		Rear Left	Alloy rim	16"	4 mm
Fitted	Summer tires		Front Right	Alloy rim	16"	4 mm

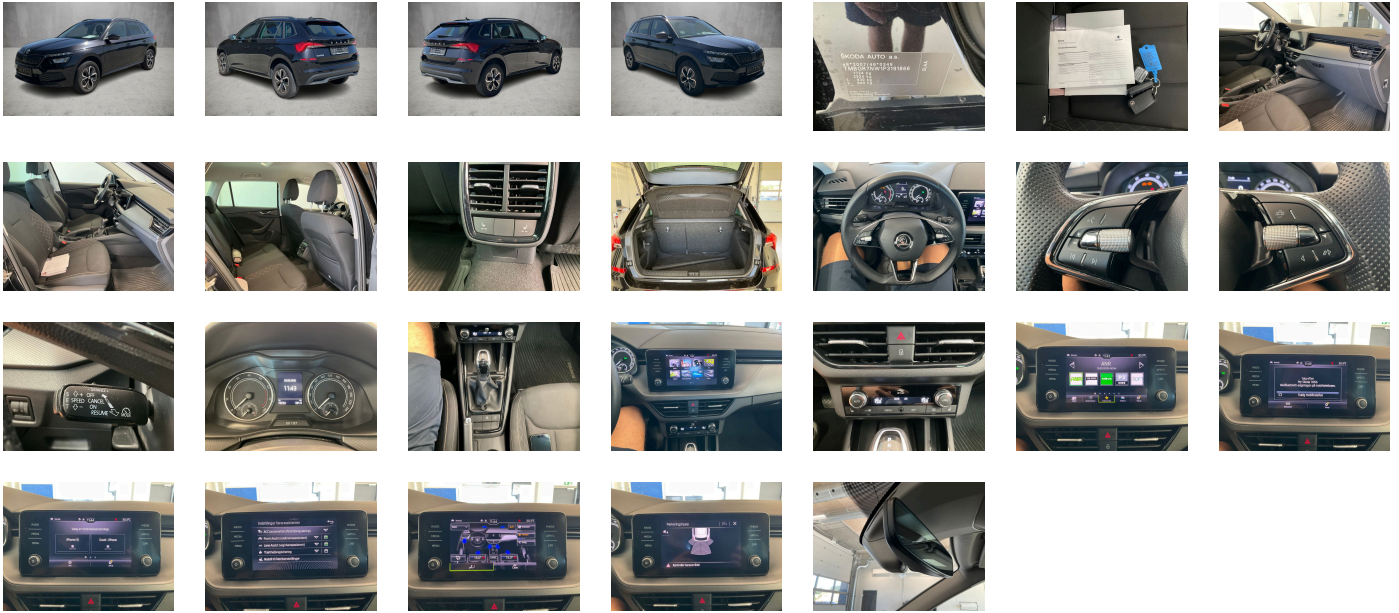
Legal tire tread (minimum 1.6 mm):

Yes

ACCESSORIES









"ADAPTIVE CRUISE CONTROL" to 210km/hour, Heated front and rear seats- heated washer nozzles, Dynamic package, Care connect 1 year, WLTP Blocking, No special edition, Standard wheel bolts, Without adapter, Vehicle class differentiation -655-, Hill hold control, Emission standard EU6 AP, Trailer hitch preparation, Driver knee airbag, Activated carbon canister (Evaporative Emission Control System (EVAP)), Spectacle storage compartment/bracket, Antenna for FM reception only-diversity, Exterior mirrors- power-adjustable/heated, Left exterior mirror- convex, Right exterior mirror- convex, Without alternative drive system, Front-wheel drive, MirrorLink, Ambition, "FRONT ASSIST" incl. adaptive cruise control, Disc brakes in rear (Geomet D), Battery 380 A (59 Ah) EFB+, Disc brakes in front (Geomet D), Outside door mirrors in black color, Part set without country-specific prescriptive standard, With trim panel, Tool kit, Electronic stability control (ESC), Manual in Danish, Heated washer nozzles in front, Drive Mode Select without Chassis Presets, Black Piano, Operating permit- alteration, Black roof rails, Without roof insert (standard roof), Rear shock absorption, Without decorative films/emblems, Shock absorption in front, ECO function, Installation differentiation for transmission DQ200 -- vehicle components --, Electronic immobilizer, Decorative inserts Grained Black, Without protective film for scuff plate, Rear parking sensors, Without extended safety system, 2 USB Typ-C vorne, Standard manufacturing sequence, Power windows with comfort operation and circuit breaker, Without fire extinguisher, Without additional malfunction display, Extended and proactive pedestrian and cyclist protection, Standard pedal cluster, Interiorbars and air vents frame Black glossy, Separate daytime running light with automatic headlight control and manual Coming and Leaving Home feature, Fresh air intake system with combination filter, Antifreeze up to -25 degree Celsius tolerance up to -30 degree C, No special purpose vehicle- standard equipment, Without additional noise suppression measures for passenger compartment, Alternator 140 A, Weight range 12 installation control only- no requirement forecast, Suspension range 25 installation control only- no requirement forecast, 3-cylinder SI engine 1.0 l unit 05C.A, Luggage compartment cover, Luggage net, Adaptive cruise control (for DSG) with Speedlimiter, Additional exterior noise suppression, 7-speed automatic transmission, Glove compartment door with light, Without bracket, Standard tailgate, Rear window wiper and washer system with intermittent control, Standard rear axle, Rear axle weight- type 1, Grey ceiling, Unsplit rear seat bench- split folding backrest- with center armrest, Climatronic with impact pressure control- CFC-free, LED headlamps (without corner light- without fog lights), Instrument cluster- km/h speedometer, Breakaway interior rearview mirror- auto-dimming, Crossover, With multifunction camera, Without two-sided floor surface, Without refrigerator/glove compartment cooling system, Mounting fixture in luggage compartment, Without folding table on front seat backrest, Standard climatic zones, Without dynamic road sign display, Three rear head restraints, Hight-adjustable head restraints for front seats, Initial standard fuel filling, Fuel system for fuel-injected SI engine (tropicalized), Without camera systems/accident sensors, Radiator grille - black, Refrigerant R1234yf, Transport protection film with additional transport protection measures, Standard paint coating, Without luggage/load compartment floor, Without add. lights (interior lighting), Left-hand drive, Power steering, Without backrest release for front seats, Curb weight range 1, Without light control, Manually adjustable lumbar support in front seats, Leather-wrapped multi-function steering wheel, Driving on the right, 8 speakers (passive), Axial and vertical adjustable steering column, Headlight range control, Center armrest in front "Jumbo Box", Basic equipment variant, Boardcomputer Maxidot, Center console, Driver alert system, Not hot country, 3-cylinder SI engine 1.0 l/81 kW TSI base engine is Tj4/TC5, "Standard Plus" version, Without navigation device, Without front fog lamps, Remote Access / Pro-active service, Rear floor panel module- type 1, Trims for alloy wheels, Alloy wheels 6j x 16" ET38 "Hoedus Aero", Radio Bolero 8", Non-smoker's package, Regional code " ECE " for radio, Tire pressure monitoring system, With umbrella, Tires 205/60 R16 92V, Tires without specification of tire brand, Breakdown kit, Wheelbase, 3-point seat belts in front- with tensioner and height adjustment, Emergency call system eCall+, Side airbag in front with curtain airbag, Gearshift knob/handle in leather, LED rear combination lamp- dynamic turn signal- special styling, Tailgate without electrical opening, 3-point seat belt for center rear seat, Service indicator 30 000 km or 2 years (variable), Visual and acoustic seat belt reminder- electric contact, 3-point seat belts- outer rear with ECE label, Seat Ambition, Manual height adjustment for left front seat, Seat heater for front and rear seats separately controlled, Key for locking system with remote control, Start-stop system with regenerative braking, Single-tone horn, Control of logistics 2, Sun visors with mirror and airbag label on front passenger side, Without voice control, Without lane change assist, Spurhalte assist, Sunset, Without protective side molding, Without socket, Standard bumpers, Front stabilizer bar, Without drawers under front seats, Without headlamp washer system, Windshield wiper intermittent control with light sensor, Nameplate set in basic style, Without waste bin, Central locking system Keyless Go without SAFELock, Type approval country Denmark, Carrier frequency 433.92 MHz-434.42 Mhz, Without partition, Door panels with upholstery, 4 doors, DAB - Digital radio reception, Additional front underbody guard, Special identification label for EC for M1 passenger vehicles, Without delivery equipment, Rear overhang- short, Standard Seats, Bluetooth with Wireless Charging (LTE), LongLife Service Regime, Without heat accumulator/auxiliary heater, Heat-reflecting windshield, Without washer fluid level indicator, Without second battery, Without floor mats, Standard decorative trims, Without additional side body covers (stone guard), Child seat anchors f. child seat system i-Size- 2x top tether and child seat anchors in front on front passenger side, Without electronic steering column lock, Without auxiliary heater/parking heater, Equipment options subset for Denmark

PICTURES



Picture viewer: <https://fm.bilsalg.dk/business/picturebrowser?t=full&guid=2346a0e4-f76b-4699-b4ab-510302b1e0ad&carid=21391236>

OVERVIEW OF DAMAGES AND SHORTAGES

N°	LOCATION	TYPE	SEVERITY	INSURANCE	NOTES	DAMAGE GROUP
1	L. Rear Rim	Scratch	C5		Reporting done	
						
2	Front Windscreen	Cracked	C5		Reporting done	
						
3	L. Roof Pillar, B-Pillar	Dent	C4		Reporting needed	
						
4	Rear Bumper	Scratch	C4		Reporting done	
						
5	R. Rear Quarter Panel	Dent	C3			
						
6	L. Front door	Scratch	C3			
						
7	L. Front Quarter Panel	Scratch	C3			
						
8	L. Rear Quarter Panel	Dent	C3			
						

Severity explanation:

C0 = No damage / C1 = Simple preparation / C2 = Minor preparation needed / C3 = Can be smart repaired / C4 = Repair/spray paint / C5 = Need replacement

ELECTRICAL AND MECHANICAL CONDITION

N°	LOCATION	TYPE	NOTES
1	Is the car drivable	Yes	