

VEHICLE DESCRIPTION - Audi Q2 Prestige 1.5 35 TFSI



First registration date:
10/2023

VIN:
WAUZZZGA4RA014438

Colour:
Silver Metallic Normal gloss

Mileage (km):
30.560

Gear:
Automatic (7 Gears)

Fuel type:
Gasoline

Body type:
SUV

Number of doors:
5

Drive type:
FWD

Model year:
2020

Engine power:
110 kW

Number of seats:
5

Engine size (cc):
1498

Interior:
Black Fabric

VEHICLE DETAILS

Number of keys:
2

Number of license plates:
2

Registration certificate:
Part 1 & 2 present

Service documentation:
Yes

Inspection date:
16-06-2026

Last service (year/month):
2025/10

Mileage (km) at last service:
24.216

SUMMARY OF THE VEHICLE'S CONDITION

Is the car in a driveable condition:
Yes

Legal tire tread (minimum 1.6 mm):
Yes

WHEELS

TYPE	SEASON	BRAND	POSITION	RIM	SIZE	TREAD
Fitted	Summer tires		Front Left	Alloy rim	17"	5 mm
Fitted	Summer tires		Rear Right	Alloy rim	17"	5 mm
Fitted	Summer tires		Rear Left	Alloy rim	17"	5 mm
Fitted	Summer tires		Front Right	Alloy rim	17"	5 mm

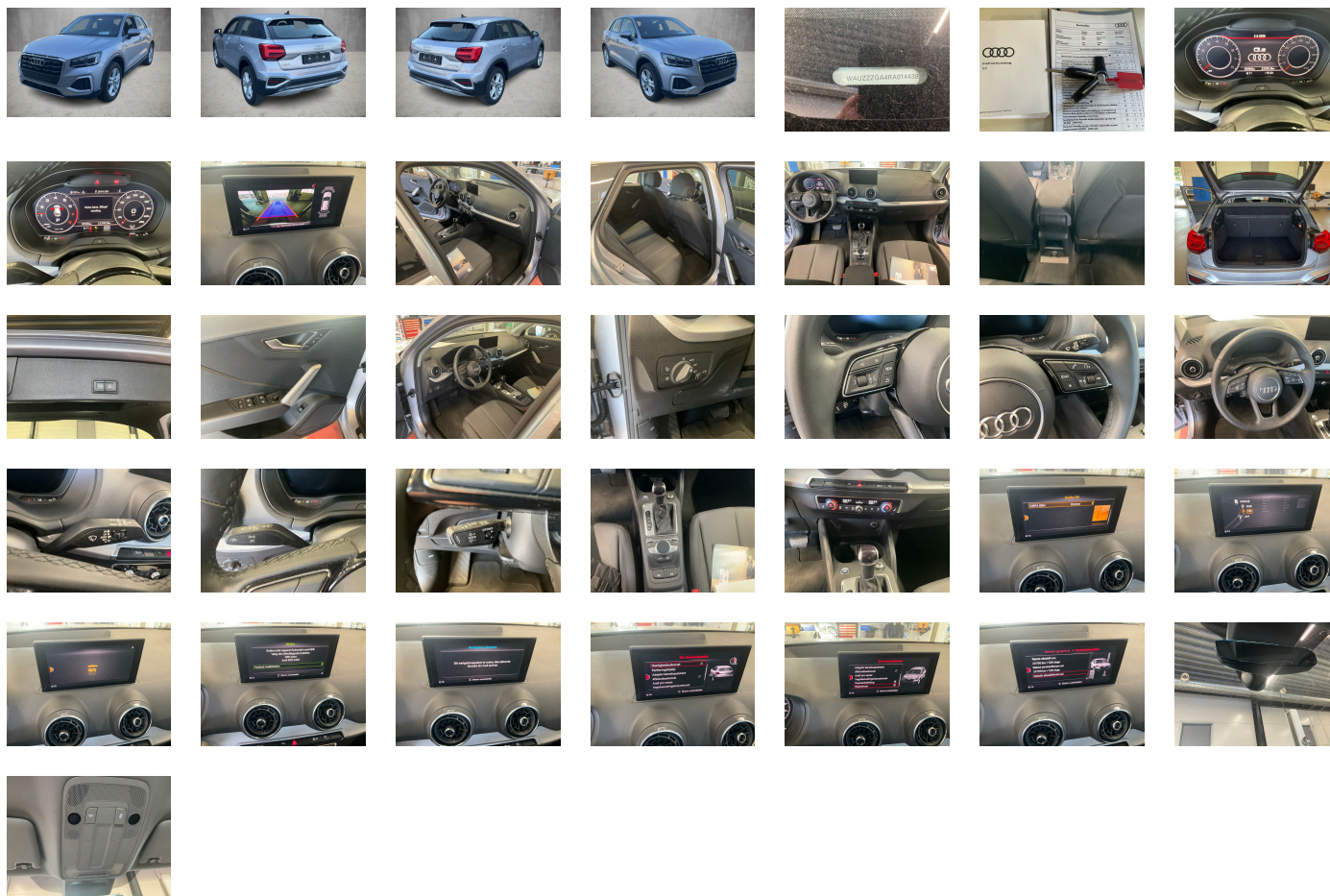
Legal tire tread (minimum 1.6 mm):

Yes

ACCESSORIES

Matrix LED headlights and LED rear lights, Comfort package plus, Infotainment package connectivity, Assist package Park, Equipment package for Denmark, Equipment package for Denmark, Internal control code, Internal control code, Internal control code, Internal control code, No special edition, Sideblades in Manhattan Gray Metallic, Standard wheel bolts, Vehicle class differentiation -GA0-, Exhaust tailpipes, Emission standard EU6 AP, Preparation for trailer hitch, Airbags-front, front passenger airbag can be deactivated, Activated carbon canister (Evaporative Emission Control System (EVAP)), Without Storage and Luggage Compartment package and 12V socket in the rear, Exterior mirrors- electrically adjustable- heated and folding- automatically dimming on both sides, Left exterior mirror- aspherical, Exterior mirrors on the right- (large field of view)- convex, Without alternative drive system, Front-wheel drive, advanced, Audi pre sense front for adaptive cruise control, Disk brakes- rear- 15-inch, Battery 420 A (70 Ah), Disk brakes- front- 15-inch, Exterior mirror housings in body color, Without special color trim, Standard battery/alternator capacity, Part set without country-specific prescriptive standard, Vehicle tool kit, Electronic Stabilization Control ESC, Manual in Danish, Brake pad wear indicator, Without Audi drive select, Without interior trim, Operating permit- alteration, Standard, Without Audi connect navigation & infotainment, Omission of roof rails, Without roof insert (standard roof), Standard suspension, Without decorative films/emblems, Shock absorption in front, SWIN management, Without ECO function, Installation differentiation for transmission DQ200 -- vehicle components --, Electronic immobilizer, Inlays- diamond paint finish- Silver Gray, Door sill trims with aluminum inlays- front, Parking system plus, Without extended safety system, Smartphone interface, Standard manufacturing sequence, Window controls, Without fire extinguisher, Extended and proactive pedestrian and cyclist protection, Standard pedal cluster, Separate daytime running light, Hold assist, Without preparation for VTS (vehicle tracking system), No special purpose vehicle- standard equipment, Alternator 140 A, Weight range 3 installation control only- no requirement forecast, Suspension range 04 installation control only- no requirement forecast, 4-cylinder SI engine 1.5 l unit 05E.D, Adaptive cruise control, S tronic, Rear trim panel (ECE), Audi AG, Roof spoiler, Rear window wiper and washer system with intermittent control, Standard rear axle, Headlining in cloth in specific color, Rear seat backrest- folding, Deluxe automatic air conditioning, Matrix LED headlights with dynamic light sequencing and dynamic turn signal, Without head-up display, Without electric motor (hybrid), Without customized installation, Instrument cluster- km/h speedometer, Interior mirror-automatically dimming- frameless, Box, With multifunction camera, Luggage compartment mat, Without refrigerator/glove compartment cooling system, Child-proof lock- electrically operated, Without folding table on front seat backrest, Standard climatic zones, Without dynamic road sign display, Three rear head restraints, Without antenna amplifier, Head restraints- front, Initial standard fuel filling, Fuel system for fuel-injected SI engine, Without special body measures, ISOFIX child seat mounting for the front passenger seat, Reversing camera, Refrigerant R1234yf, Front license plate carrier, Adhesive film, Interior lighting, Without vehicle inlet, Left-hand drive, Progressive steering, Without backrest release for front seats, Matrix LED headlights with dynamic light sequencing and dynamic turn signal, Without charging cable, 4-way lumbar support for the front seats, Leather steering wheel- 3-spoke with multifunction plus, Driving on the right, 6 loudspeakers, Without leather, Comfort center armrest- front, Basic equipment variant, Audi virtual cockpit, Driver alert system, Not hot country, SI engine, 4-cylinder SI engine 1.5 l/110 kW TSI base engine is TJ7/N09/T9F/T57/T0D, Without neck heating, Navigation preparation, Rear fog lamps, Audi connect remote & control (for MMI radio plus), Vehicles with special upgrade measures, Rear floor panel module- type 7, Production wheels, Standard-production quality, Wheels- 5-twin-spoke- 7.0j x 17- 215/55 R17 tires, Infotainment computer, Non-smoker's package, Regional code " ECE " for radio, Tire pressure loss indicator, Tires 215/55 R17 94V, Tires without specification of tire brand, Tire repair kit, Wheelbase, Without call feature, Side airbags- front and head airbag system, Gearshift/selector lever handle, No self-collection, Labels in English and German, LED rear lights with dynamic turn signal, Script cloth, Luggage compartment lid- electrically opening and closing, Service indicator 30 000 km or 2 years (variable), Seat belt reminder, Front passenger seat- height-adjustable, Seat heating- front, With special labels safety certificates for Denmark, Start-stop system with recuperation, Two-tone horn, Control of special edition prices, Without lane change assist, Lane departure warning, Rear and side windows with heat-insulating glazing, Bumpers- advanced- in contrasting paint finish, Without rear stabilizer bar, Front stabilizer bar, Control of series production, Without headlamp washer system, Convenience key- without Safelock, Type approval country Denmark, Carrier frequency 433.92 MHz-434.42 Mhz, Without partition, Transit coating (type 1), 5 doors, Digital Audio Broadcasting, Without additional front underbody guard, Special identification label (EU), Model name as per new output designation, First-aid kit with warning triangle, Standard seats- front, Standard rear seat release, Audi phone box light, Without wind deflector, LongLife Service Regime, Without heat accumulator/auxiliary heater, Windshield with gray tinted sunshield, Washer fluid level indicator, Without additional tires, Floor mats- front and rear, Standard trim strips, ISOFIX and top tether for outer rear seats, Without auxiliary heater/parking heater, Equipment options subset for Denmark

PICTURES



Picture viewer: <https://fm.bilsalg.dk/business/picturebrowser?t=full&guid=90db0fb5-ca8c-4501-b0a2-d12c16a06ff3&carid=21318418>

OVERVIEW OF DAMAGES AND SHORTAGES

No damages or shortages

ELECTRICAL AND MECHANICAL CONDITION

N° LOCATION	TYPE	NOTES
1	Is the car drivable	Yes