

**VEHICLE DESCRIPTION - Škoda Octavia Style 1.0 TSI e-TEC MHEV**



**First registration date:**  
10/2023

**VIN:**  
TMBJP8NX1RY046097

**Colour:**  
Dark blue Metallic Normal gloss

**Mileage (km):**  
28.781

**Gear:**  
Automatic (7 Gears)

**Fuel type:**  
Hybrid petrol

**Body type:**  
Estate Wagon

**Number of doors:**  
5

**Drive type:**  
FWD

**Model year:**  
2020-2024

**Engine power:**  
81 kW

**Number of seats:**  
5

**Engine size (cc):**  
999

**Interior:**  
Beige Fabric

**VEHICLE DETAILS**

**Number of keys:**  
2

**Number of license plates:**  
2

**Registration certificate:**  
Part 1 & 2 present

**Service documentation:**  
No

**Inspection date:**  
22-06-2026

**Last service (year/month):**

**Mileage (km) at last service:**

**SUMMARY OF THE VEHICLE'S CONDITION**

**Is the car in a driveable condition:**  
Yes

**Legal tire tread (minimum 1.6 mm):**  
Yes

## WHEELS

TYPE	SEASON	BRAND	POSITION	RIM	SIZE	TREAD
Fitted	Summer tires		Front Left	Alloy rim	17"	5 mm
Fitted	Summer tires		Rear Right	Alloy rim	17"	5 mm
Fitted	Summer tires		Rear Left	Alloy rim	17"	5 mm
Fitted	Summer tires		Front Right	Alloy rim	17"	5 mm

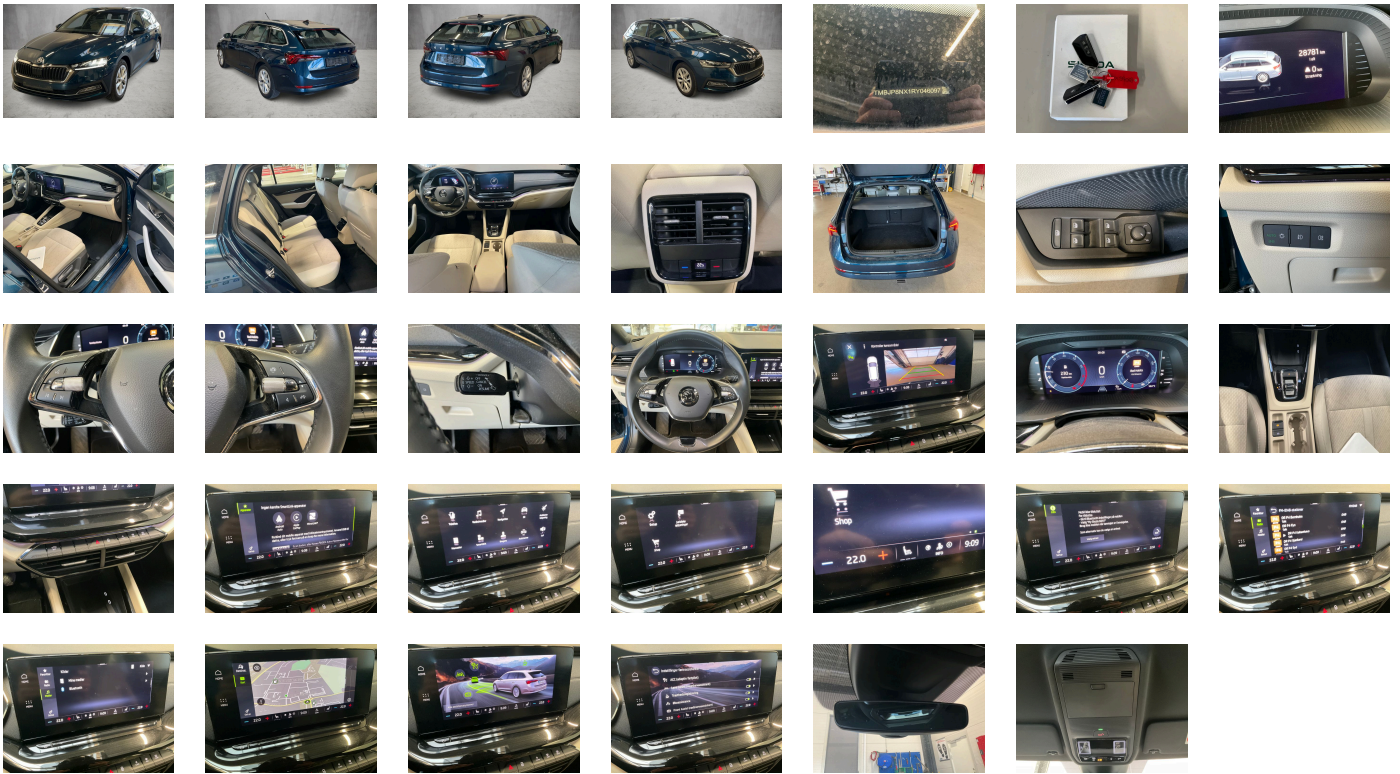
### Legal tire tread (minimum 1.6 mm):

Yes

## ACCESSORIES

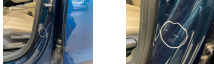
Dashboard- beige (With fabric seats black PAD/ with Suedia seats Suedia beige PAD), Remote Access + Infotainment Online 1 year, With emergency steering support with turn assist, No special edition, Standard wheel bolts, Without adapter, Vehicle class differentiation -5EN-, Rear exhaust tailpipe (standard), Hill hold control, Emission standard EU6 AP, Trailer hitch preparation, Driver knee airbag, Activated carbon canister (Evaporative Emission Control System (EVAP)), Without storage compartment package/box, Antenna for FM reception only- diversity, Exterior rear view mirrors, glass el. adjusted-auto dimming (driver)- heated- housing el. powerf.- board.spot(w. KA6), Standard electronic engine sound, Exterior mirrors: convex on driver side- convex on front passenger side, Hybrid drive system mHEV, Front-wheel drive, "SMART LINK" (wired and wireless connect), Luxury equipment, "FRONT ASSIST" - with warning and braking reaction to vehicles- pedestrians and cyclists, Disc brakes in rear, Battery 420 A (70 Ah), Disc brakes in front (Geomet D), Exterior mirror housings and various add-on parts in body color, Standard battery/alternator capacity, Part set without country-specific prescriptive standard, Tool kit, Brake control system for vehicles with electric drive (ESC and electromechanical brake booster), Manual in Danish, Operating voltage 12 V, Heated winscreen washer nozzles, Without "drive select", Operating permit- alteration, Without Car2X, Roof rails, Without roof insert (standard roof), Rear shock absorption- basic version 1, Shock absorption in front, Electronic differential lock XDS-dynamic traction support, Without ski bag, Installation differentiation for transmission DQ200 -- vehicle components --, Electronic immobilizer, Decorative insert "PIANO BLACK", Scuff plates in door apertures, Park distance control, "CREW PROTECT ASSIST" (proactive passenger protection system- basic and front), External-USB type C- only data socket(s), Standard manufacturing sequence, Power windows with comfort operation and circuit breaker, Without additional malfunction display, Standard pedal cluster, Vent, Separate daytime running light, Parking brake, No special purpose vehicle- standard equipment, Special interior noise suppression, Belt-driven integrated starter alternator 48 V 110 - 250 A, Weight range 10 installation control only- no requirement forecast, Suspension range 04 installation control only- no requirement forecast, 3-cylinder SI engine 1.0 l unit 05C.A, Luggage compartment cover- sliding, Without tie down straps/net/pocket, Adaptive cruise control (with "follow-to-stop") and speed limiter, Luggage compartment lighting, Additional exterior noise suppression, 7-speed automatic transmission, Without speed limiter, Without bracket, Rear spoiler, Rear window wiper "AERO", Standard rear axle, Rear axle weight- type 1, Unsplit molded headliner, Unsplit rear seat bench- split folding backrest- with center armrest, Climatronic (3-zone) with air conditioning control panel in rear, LED headlamps, Without head-up display, Without electric motor (hybrid), Interior light in footwell in front and rear, Instrument cluster- km/h speedometer, Dashboard- beige- with PAD, Breakaway interior rearview mirror- auto-dimming, Wagon/Avant, With multifunction camera, Luggage compartment floor covering "Comfort", Manual child safety lock, Storage compartments in trunk, Without folding table on front seat backrest, Standard climatic zones, Without dynamic road sign display, Without seat ventilation/massage seat, Three rear head restraints, Front head restraints, Initial standard fuel filling (6L), Fuel system for fuel-injected SI engine, Without special body measures, "REAR VIEW", Refrigerant R1234yf, Transport protection film with additional transport protection measures, Standard paint coating, Without luggage/load compartment floor, Interior ambient lighting and surround lighting, Left-hand drive, Speed-related variable steering assist (Servotronic), Without backrest release for front seats, Curb weight range 1, High-beam control, Without speed limiter, Without charging cable, Without mode 3 charging cable, Manually adjustable lumbar support in front seats, Leather multi-function steering wheel with tiptronic, Driving on the right, 8 speakers (passive), Headlight range control, Center armrest in front, Basic equipment variant, FPK Display, Center console, "DRIVER ALERT" - driver alert system, Not hot country, 3-cylinder SI engine 1.0 l/81 kW TSI base engine is TJ4/TC5, Navi Columbus + Web Radio, Rear fog light on one side- back-up light on both sides, Front fog lamp and cornering lamp, Remote Access / Remote Access + Online Infotainment, A8, Rear floor panel module- type 4, Trims for alloy wheels, Alloy wheels "ROTARE AERO" 7J x 17" - 4 pcs, Optional infotainment system (MIB3), Regional code " ECE " for radio, Tire pressure monitoring system, Tires 205/55 R17 91V Low Rolling Resistance, Tire suppliers for EU countries, Breakdown kit, Wheelbase, 3-point seat belts in front- with tensioner and height adjustment, Emergency call system eCall+, Side airbag in front with curtain airbag and interaction airbag in front, Without gearshift knob/handle, LED rear combination lamp- variable lighting functions- special styling, Tailgate/trunk lid release, Service indicator 30 000 km or 2 years ( variable ), Without locking and starting systems, Visual and acoustic seat belt reminder- electric contact in front and rear, 3-point seat belts- outer rear with ECE label, 3-point seat belt for center rear seat, Seat trim covers in fabric, Manual height adjustment for front seats, Seat heater for front seats separately controlled, Start-stop system with regenerative braking, Two-tone horn, Sun visors with illuminated vanity mirror on driver and front passenger side, Voice control, Without lane change assist, Lane Assist (without HOD), Side and rear windows in heat-insulating glass, Without supertone system and tone sequence control, 12-volt socket in luggage boot, Body-colored bumpers, Without rear stabilizer bar, Front stabilizer bar, Without headlamp washer system, Windshield wiper intermittent control with light/rain sensor, Without mud flap, Nameplate set in basic style, Mass damper for steering wheel- XX Hz, Keyless locking and starting system "Keyless Advanced" without SAFELOCK, Type approval country Denmark, UWB-capable country and carrier frequency- 433.92 to 434.42 MHz, Without partition, Door and side trim panel, 4 doors, DAB - Digital radio reception, Without additional front underbody guard, Special identification label for EC for M1 passenger vehicles, Without delivery equipment, Comfort seats in front (sports seats for RS), Mechanical rear seat release, Comfort telephony with LTE and wireless charging, Additional retro-reflectors (door area), LongLife Service Regime, Additional el. heating, Heat-reflecting windshield, Without second battery, Without additional tires, Floor mats in front and rear, Chrome package, Additional stone guard body covers, Child seat anchors f. child seat system i-Size- 2x top tether and child seat anchors in front on front passenger side, Without auxiliary heater/parking heater, Equipment options subset for Denmark

**PICTURES**



**Picture viewer:** <https://fm.bilsalg.dk/business/picturebrowser?t=full&guid=3a9ce95b-a677-48a6-be20-528706af1cdd&carid=21318416>

## OVERVIEW OF DAMAGES AND SHORTAGES

N°	LOCATION	TYPE	SEVERITY	INSURANCE	NOTES	DAMAGE GROUP
1	L. Roof Pillar, B-Pillar	Scratch	C4		Reporting needed	
						

Severity explanation:

C0 = No damage / C1 = Simple preparation / C2 = Minor preparation needed / C3 = Can be smart repaired / C4 = Repair/spray paint / C5 = Need replacement

## ELECTRICAL AND MECHANICAL CONDITION

N°	LOCATION	TYPE	NOTES
1	Is the car drivable	Yes	