

VEHICLE DESCRIPTION - VW T-ROC Style Plus 1.5 TSI



First registration date: 10/2023	VIN: WVGZZA1ZRV014794
Colour: Gray Metallic Normal gloss	Mileage (km): 28.291
Gear: Automatic (7 Gears)	Fuel type: Gasoline
Body type: SUV	Number of doors: 5
Drive type: FWD	Model year: 2021-2025
Engine power: 110 kW	Number of seats: 5
Engine size (cc): 1498	Interior:


VEHICLE DETAILS

Number of keys: 2	Number of license plates: 2	Registration certificate: Part 1 & 2 present	Service documentation: Yes
Inspection date: 13-05-2026	Last service (year/month): 2025/12	Mileage (km) at last service: 23.193	

SUMMARY OF THE VEHICLE'S CONDITION

Is the car in a driveable condition: Yes	Legal tire tread (minimum 1.6 mm): Yes
----------------------------------------------------	--------------------------------------------------

WHEELS

 TYPE	SEASON	BRAND	POSITION	RIM	SIZE	TREAD
Fitted	Summer tires		Front Left	Alloy rim	17"	5 mm
Fitted	Summer tires		Rear Right	Alloy rim	17"	5 mm
Fitted	Summer tires		Rear Left	Alloy rim	17"	5 mm
Fitted	Summer tires		Front Right	Alloy rim	17"	5 mm

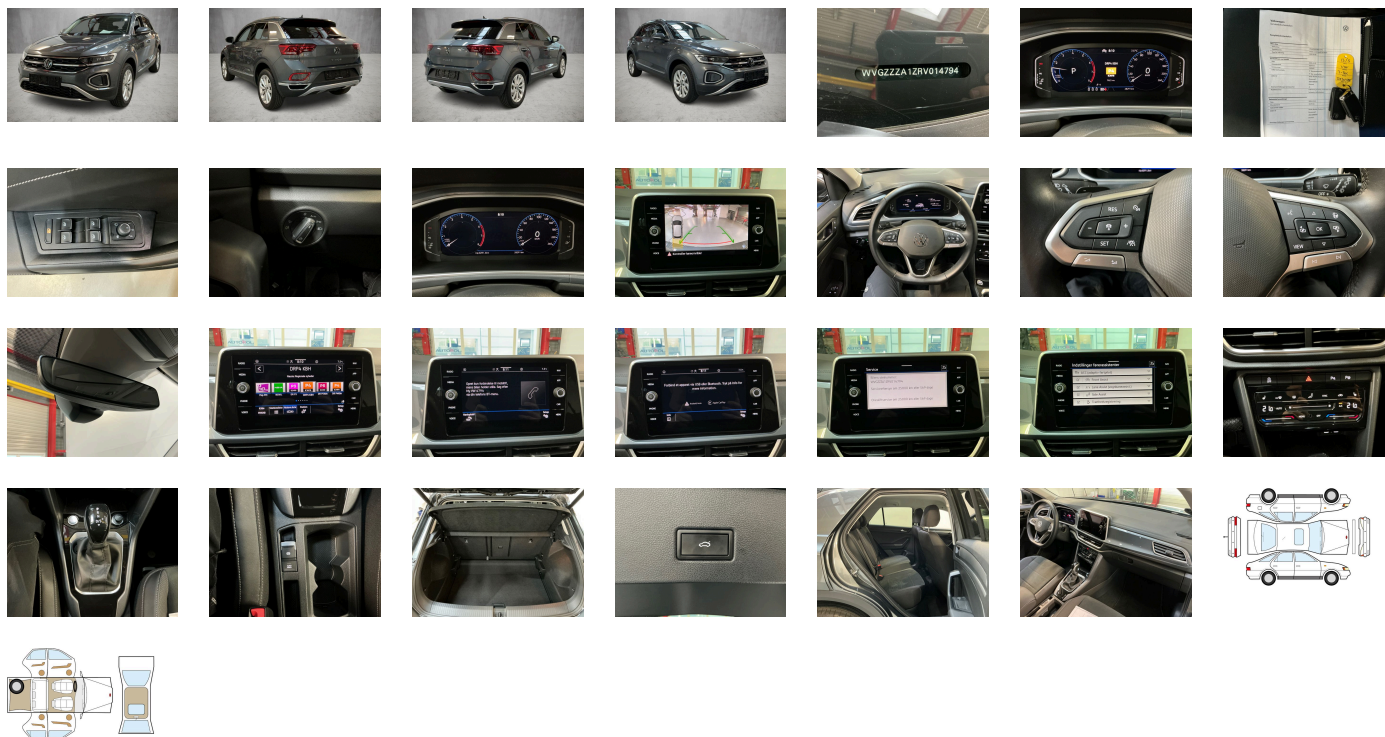
Legal tire tread (minimum 1.6 mm):

Yes

ACCESSORIES

Driving on the right, Comfort equipment, Part set without country-specific prescriptive standard, Type approval country Denmark, Operating permit- alteration, 4-cylinder SI engine 1.5 I TSI- 110 kW, Without ECO function, Online service- with OCU- with head unit coding- without engine immobilizer interconnection, Driver alert system, Regional code " ECE " for radio, Without vehicle inlet, Without charging cable, No special edition, Standard paint coating, Basic equipment variant, No special purpose vehicle- standard equipment, Electronic engine sound, Vehicles with special upgrade measures, Shock absorption in front, 7-speed automatic transmission or dual-clutch transmission DSG- note: PR family EDF, Battery 380 A (59 Ah) EFB+, Tires 215/55 R17 low rolling resistance, Rear view camera system, Refrigerant R1234yf, Hatchback, Left-hand drive, Suspension range 03 installation control only- no requirement forecast, Without UN-ECE cybersecurity & software update, Standard battery/alternator capacity, Emergency call service-10-year contract duration as of initial delivery- condition: mob. phone network available, Inserts of front seats and outer rear seats in ArtVelours microfleece, 4-cylinder SI engine 1.5 I unit 05E.D, Easy Open package without SAFELock, LongLife Service Regime, Without voice control, Service indicator 30 000 km or 2 years (variable), Chrome elements on rotary light switch- power mirror switch- window regulator switches, vents with chrome frames, Multifunction camera, Drawer under right front seat, White ambient lighting, Without dynamic road sign display, Digital radio reception DAB+, Sports comfort seats in front, Radio "Ready 2 Discover" incl. "Streaming & Internet", Control of campaigns, Equipment change, Rear shock absorption- chassis with increased ride height, Without exterior ambient lighting, Hill start assist, Electromechanical parking brake with Auto Hold function, Instrument cluster with electronic speedometer- odometer and trip odometer- tachometer, 4 alloy wheels "Johannesburg" 7J x 17- diamond-turned surface, 2 USB-C ports in the front- 2 USB-C charging sockets on the center console in rear- charging capacity up to 45 W, Standard pedal cluster, Pedestrian Monitoring, Tires without specification of tire brand, Winter package, VE: IQ.DRIVE package without proactive passenger protection system forces SW9, No German text in language code de_VW, Preparation for We Connect and We Connect Plus or VW Connect and VW Connect Plus, Front stabilizer bar, 4 doors, Without rear stabilizer bar, Wheelbase, Dual-clutch transmission DSG DQ200, Standard manufacturing sequence, Without decals and emblems, Without alternative drive system, Vehicle class differentiation -2GA-, Elimination of nameplate for engine designation on luggage compartment lid, Standard rear axle, Rear exhaust tailpipe (standard), Without floor mats, Manual in Danish, Weight range 4 installation control only- no requirement forecast, Standard climatic zones, Electronic Stability Control w/ driver steering recommendation- ABS- ASR- EDL- EDTC and trailer stabilization, Fuel system for fuel-injected SI engine, Without trailer hitch, Special identification label for EC for M1 passenger vehicles, Activated carbon canister (Evaporative Emission Control System (EVAP)), Tire Mobility Set: 12-volt compressor and tire sealant, Surround lighting with welcome light, Trims for alloy wheels, Electromechanical speed-sensitive power steering, Standard wheel bolts, Without additional front underbody guard, Tool kit, Warning triangle, Without folding table on front seat backrest, Elimination of cooling system of glove compartment, Front-wheel drive, Disc brakes in front, Initial standard fuel filling, Disc brakes in rear, Leather multi-function steering wheel- heated- with shift paddles, Without Adaptive Chassis Control, Body-colored bumpers- radiator grille with chrome trim, Without additional tires, Without electric motor (hybrid), ISOFIX anchorage points (mounting fixture for 2 child seats on rear bench seat), Without partition, Standard roof, Height-adjustable and removable luggage compartment floor, Completely folding front passenger seat backrest, Door and side trim panel in foam film- insert in leatherette, Front seats with height adjustment, Asymmetric split folding rear seat backrest- with center armrest, 3-point seat belts in front with height adjustment and seat belt pretensioners, Silver-anodized roof rails, 3 head restraints in rear, 3-point seat belts with seat belt pretensioners for the outer rear seats, Heated front seats, Emission standard EU6 AP, Laminated safety glass windshield- heat-insulating, Keyless locking and starting system Keyless Access without SAFELock, Privacy glass for rear side windows and rear window, Auto-dimming interior rearview mirror, Rear floor panel module- type 7, Power windows, Driver and front passenger airbag with front passenger airbag deactivation, Curtain airbag system for front and rear passengers incl. side airbags in front, Black door lower parts- with chrome molding, Without special body measures, Carrier frequency 433.92 MHz-434.42 Mhz, Easy Open & Close - sensor controlled luggage compartment opening and closing with remote unlocking, Exterior mirrors: aspherical on driver side- convex on front passenger side, Transport protection film (minimum protection) with additional transport protection measures, Illuminated vanity mirrors in sun visors, Safety-optimized front head restraints, Without fire extinguisher, Center armrest in front, Exterior mirror housings in roof color, Travel Assist- Lane Assist and Emergency Assist, Autonomous Emergency Braking Front Assist (for Adaptive Cruise Control ACC up to 210 km/h), Headliner, Gearshift knob in leather, Light unit in front footwell, Exterior mirrors- power-adjustable- folding- and heated- with memory feature, Electronic immobilizer, Without socket, Without heat accumulator/auxiliary heater, Lumbar supports in front, Tire Pressure Monitoring System, Start-stop system with regenerative braking, Without protective film for scuff plate, Decorative inserts "Deep Iron Gray" for dashboard- center console and front door trim panels, Preparation for subsequent activation: Navigation feature "Discover Media" incl. Streaming & Internet, Without extended safety system, Park Assist with Park Distance Control, Lane change system Side Assist, Radio, Alternator 140 A, High-beam control Light Assist, LED Plus headlamps with LED separate daytime running light, Rear window wiper with intermittent control, Rain sensor, Dynamic headlight range control, 6 speakers, 2 LED reading lights in front and 2 in rear, Rear fog light on one side- back-up light on both sides, Adaptive Cruise Control ACC stop & go incl. speed limiter, Dark Red LED rear combination lamps, Cornering light and poor weather light, Warning lamp for washer fluid level, Without headlamp washer system, Single-tone horn, Diversity antenna for FM reception, Not hot country, Air Care Climatronic 2 zone automatic climate control with enhanced air filterwith activated carbon, Without preparation for two-way radio installation, Automatic headlight control with LED separate daytime running light and exit and entry lighting, Non-smoker's package: Storage compartment and 12-V outlet in front, Without auxiliary heater/parking heater, Warning signal and warning lamp for front and rear seat belts not fastened, Multi-color Digital Cockpit Pre-selection of different info profiles possible, Retro-reflectors in all doors, Automatically-heated washer nozzles in front, Brake pad wear indicator, App-Connect Wireless for Apple CarPlay and Android Auto, Mobile phone interface, Operating voltage 12 V, Equipment options subset for Denmark

PICTURES



Picture viewer: <https://fm.bilsalg.dk/business/picturebrowser?t=full&guid=7761fce1-f7f9-4769-ad73-2914075ee459&carid=21318359>

OVERVIEW OF DAMAGES AND SHORTAGES

No damages or shortages

ELECTRICAL AND MECHANICAL CONDITION

N° LOCATION	TYPE	NOTES
1	Is the car drivable	Yes