

**VEHICLE DESCRIPTION - Audi Q3 Attitude Plus 1.4 45 TFSI e PHEV**



**First registration date:**  
10/2023

**VIN:**  
WAUZZZF34R1008724

**Colour:**  
null Metallic Normal gloss

**Mileage (km):**  
54.394

**Gear:**  
Automatic (6 Gears)

**Fuel type:**  
Hybrid petrol

**Body type:**  
SUV

**Number of doors:**  
5

**Drive type:**  
FWD

**Model year:**  
2018-2025

**Engine power:**  
180 kW

**Number of seats:**  
5

**Engine size (cc):**  
1395

**Interior:**

**VEHICLE DETAILS**

**Number of keys:**  
2

**Number of license plates:**  
2

**Registration certificate:**  
Part 1 & 2 present

**Service documentation:**  
No

**Inspection date:**  
23-06-2026

**Last service (year/month):**

**Mileage (km) at last service:**

**SUMMARY OF THE VEHICLE'S CONDITION**

**Is the car in a driveable condition:**  
Yes

**Legal tire tread (minimum 1.6 mm):**  
Yes

**WHEELS**

 TYPE	SEASON	BRAND	POSITION	RIM	SIZE	TREAD
Fitted	Summer tires		Front Left	Alloy rim	18"	3 mm
Fitted	Summer tires		Rear Right	Alloy rim	18"	4 mm
Fitted	Summer tires		Rear Left	Alloy rim	18"	4 mm
Fitted	Summer tires		Front Right	Alloy rim	18"	3 mm
Extra Wheel	Winter tires		Rear Left	Alloy rim	17"	7 mm
Extra Wheel	Winter tires		Front Right	Alloy rim	17"	7 mm
Extra Wheel	Winter tires		Front Left	Alloy rim	17"	7 mm
Extra Wheel	Winter tires		Rear Right	Alloy rim	17"	7 mm

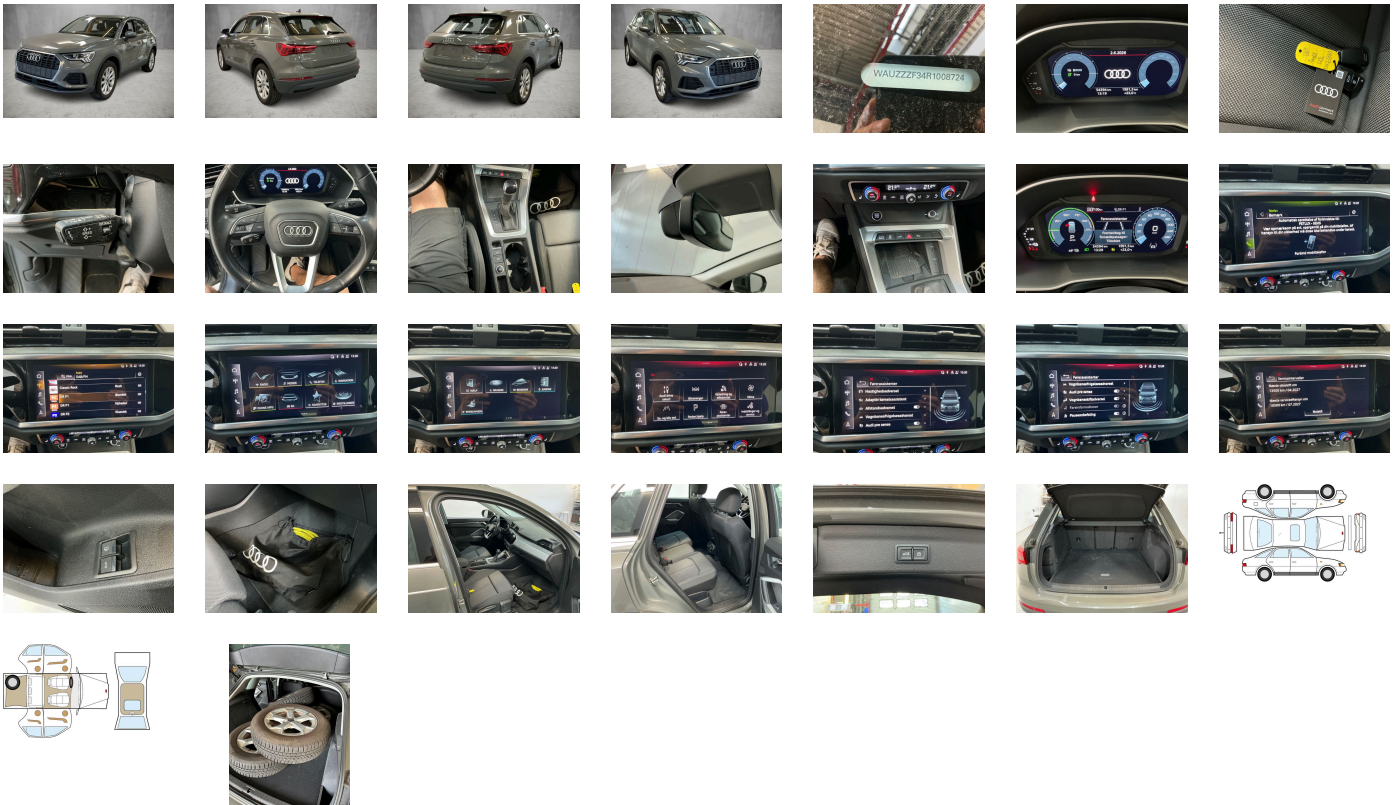
**Legal tire tread (minimum 1.6 mm):**

Yes

## ACCESSORIES

Assist package, Preparation for MMI navigation plus, LED headlights and LED rear lights with dynamic turn signal in rear, Equipment package for Denmark, Equipment package for Denmark, Equipment package for Denmark, Equipment package for Denmark, Internal control code, Internal control code, Internal control code, Special control I/VP, No special edition, Standard wheel bolts, Vehicle class differentiation -F30/F3A-, Standard exhaust system, Hill hold assist, Emission standard EU6 AP, Preparation for trailer hitch, Airbags- front, front passenger airbag can be deactivated, Activated carbon canister (Evaporative Emission Control System (EVAP)), Without Storage package, Exterior mirrors- electrically adjustable and heated, Left exterior mirror- aspherical, Acoustic vehicle alerting system, Exterior mirrors on the right- (large field of view)- convex, Hybrid propulsion system PHEV, Front-wheel drive, Without "Multimedia" in vehicle, Basic exterior, Audi pre sense front for adaptive cruise control, Disc brakes in rear, Battery 340 A (58 Ah), Disk brakes- front- 17-inch (ECE), Exterior mirror housings in body color, Standard battery/alternator capacity, Part set without country-specific prescriptive standard, Tool kit, Brake control system for vehicles with electric drive (ESC and electromechanical brake booster), Manual in Danish, Operating voltage 12 V, Audi drive select, Interior trims in aluminum look, Operating permit- alteration, Audi connect navigation & infotainment, Without Connect package, Roof rails in aluminum, Without roof insert (standard roof), Accent surfaces- Gloss Black, Comfort suspension, Side decorative films, Shock absorption in front, SWIN management, ECO function, Installation differentiation for transmission DQ400 -- vehicle components --, Electronic immobilizer, Inlay- Micrometallic- Silver, Door sill trims with plastic inlays, Parking system plus, Without extended safety system, Smartphone interface, Standard manufacturing sequence, Without fire extinguisher, Extended and proactive pedestrian and cyclist protection, Standard pedal cluster, Separate daytime running light, Hold assist, Without front spoiler, No special purpose vehicle- standard equipment, Without alternator, Weight range 7 installation control only- no requirement forecast, Suspension range 04 installation control only- no requirement forecast, 4-cylinder SI engine 1.4 l unit 04E.C, Adaptive cruise control, Without garage door opener, S tronic, Speed limiter, Audi AG, Rear spoiler, Headlining in cloth in specific color, Rear seat bench plus with center armrest and cup holder, 2-zone deluxe automatic air conditioning, LED headlights, Electric motor (hybrid) system output 180 kW unit 0ED.B/0EK.A/0T3.B, Instrument cluster- km/h speedometer, Interior mirror- automatically dimming- frameless, Without sound measures for the vehicle interior (for Audi/Seat only), Box, With multifunction camera, Manual child safety lock, Without folding table on front seat backrest, Standard climatic zones, Without dynamic road sign display, Without seat ventilation/massage seat, Head restraints- rear (3), Without antenna amplifier, Head restraints- front, Increase in initial standard fuel filling, Fuel system for fuel-injected SI engine, Without special body measures, Without child seat mounting- front (ISOFIX), Without camera systems/accident sensors, Refrigerant R1234yf, Rear license plate carrier (ECE), Adhesive film, Interior lighting, Without control unit for charging system, Without wall mount, Left-hand drive, Electromechanical power steering, Without backrest release for front seats, High beam assistant, Without charging cable, Without charging cable (industrial connector), Charging cable mode 3- type 2/3- 16 A, Loading sill protector- plastic, 4-way lumbar support for the front seats, Leather steering wheel- 3-spoke with multifunction plus, Driving on the right, 6 loudspeakers, Interior elements in Dinamica microfiber- Steel Gray, Headlight range control, Engine cover, Comfort center armrest- front, Basic equipment, Audi virtual cockpit, Driver alert system, Not hot country, SI engine, 4-cylinder SI engine 1.4 l/110 kW TSI- hybrid base engine is TH8/T9D, Preparation for MMI navigation plus, Without front fog lamps, N.N.N. Type 1, Audi connect remote & control (for MMI navigation plus), Vehicles without special upgrade measures, Production wheels, Standard-production quality, Trims for alloy wheels, Wheels- 5-twin-arm- 7.0J x 18- 235/55 R18 tires, Top infotainment system High (MIB3), Non-smoker version, Regional code " ECE " for radio, Tire pressure loss indicator, Tires 235/55 R18 100V super-low rolling resistance- generation 2 (polymer coating), Tires without specification of tire brand, Tire repair kit, Wheelbase, Statutory emergency call, Side airbags- front and head airbag system, No self-collection, Labels in English and German, LED rear lights plus, Rear window- rear door and side windows in clear glass, Luggage compartment lid- electrically opening and closing, Service indicator 15 000 km or 1 year ( fix ), Seat occupancy sensor, 3-point seat belts- outer rear with ECE label, Fabric "Index", Front seats- manually adjustable, Seat heating- front, With special labels safety certificates for Denmark, Start-stop system with recuperation, Two-tone horn, Control of special edition prices, Speech dialog system, Side assist, Adaptive cruise assist with emergency assist, Without socket, Bumpers- standard, Rear stabilizer bar, Front stabilizer bar, Control of series production, Without headlamp washer system, Light/rain sensor, Without special measures, Convenience key- without Safelock, Type approval country Denmark, Carrier frequency 433.92 MHz-434.42 Mhz, Without partition, Transit coating (type 1), Digital Audio Broadcasting, Installation parts for four-cylinder engine, Without additional front underbody guard, Special identification label (EU), Model name as per new output designation, First-aid kit with warning triangle, Sport seats- front, Standard rear seat release, Audi phone box light, Without logo projection, LongLife Service Regime, Without heat accumulator/auxiliary heater, Windshield with heat-reflecting glass and acoustic glass, Washer fluid level indicator, Installation of SLI battery in rear- without second battery, Without additional tires, Floor mats- front and rear, Gloss package, ISOFIX and top tether for outer rear seats, Without electronic steering column lock, Without auxiliary heater/parking heater, Equipment options subset for Denmark

**PICTURES**



**Picture viewer:** <https://fm.bilsalg.dk/business/picturebrowser?t=full&guid=8ebc2825-dd5b-4b50-983f-b75b5f42123e&carid=21306810>

## OVERVIEW OF DAMAGES AND SHORTAGES

No damages or shortages

## ELECTRICAL AND MECHANICAL CONDITION

N° LOCATION	TYPE	NOTES
1	Is the car drivable	Yes